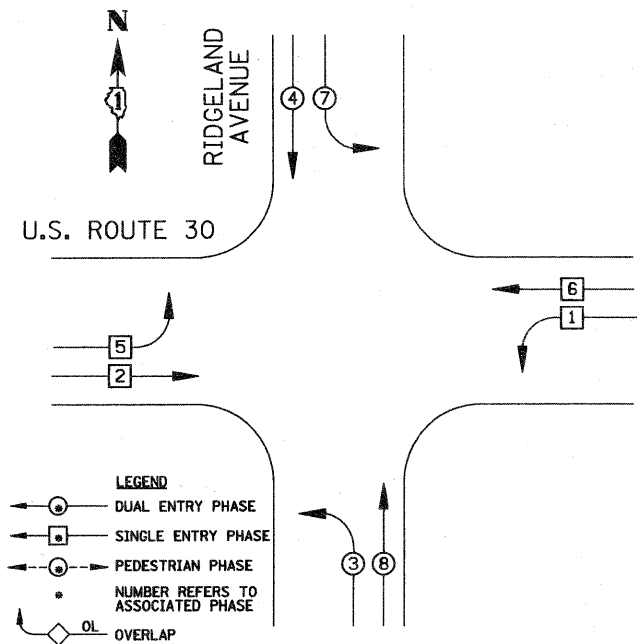
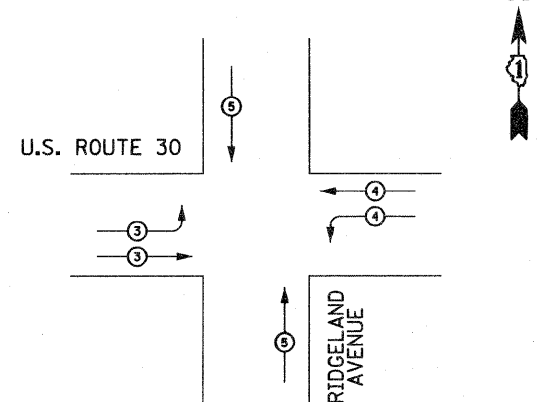


CONTROLLER SEQUENCE



PHASE DESIGNATION DIAGRAM

EMERGENCY VEHICLE PREEMPTION SEQUENCE



PROPOSED EMERGENCY VEHICLE PREEMPTOR				
EMERGENCY VEHICLE PREEMPTOR	3	4	5	
MOVEMENT				

SCHEDULE OF QUANTITIES

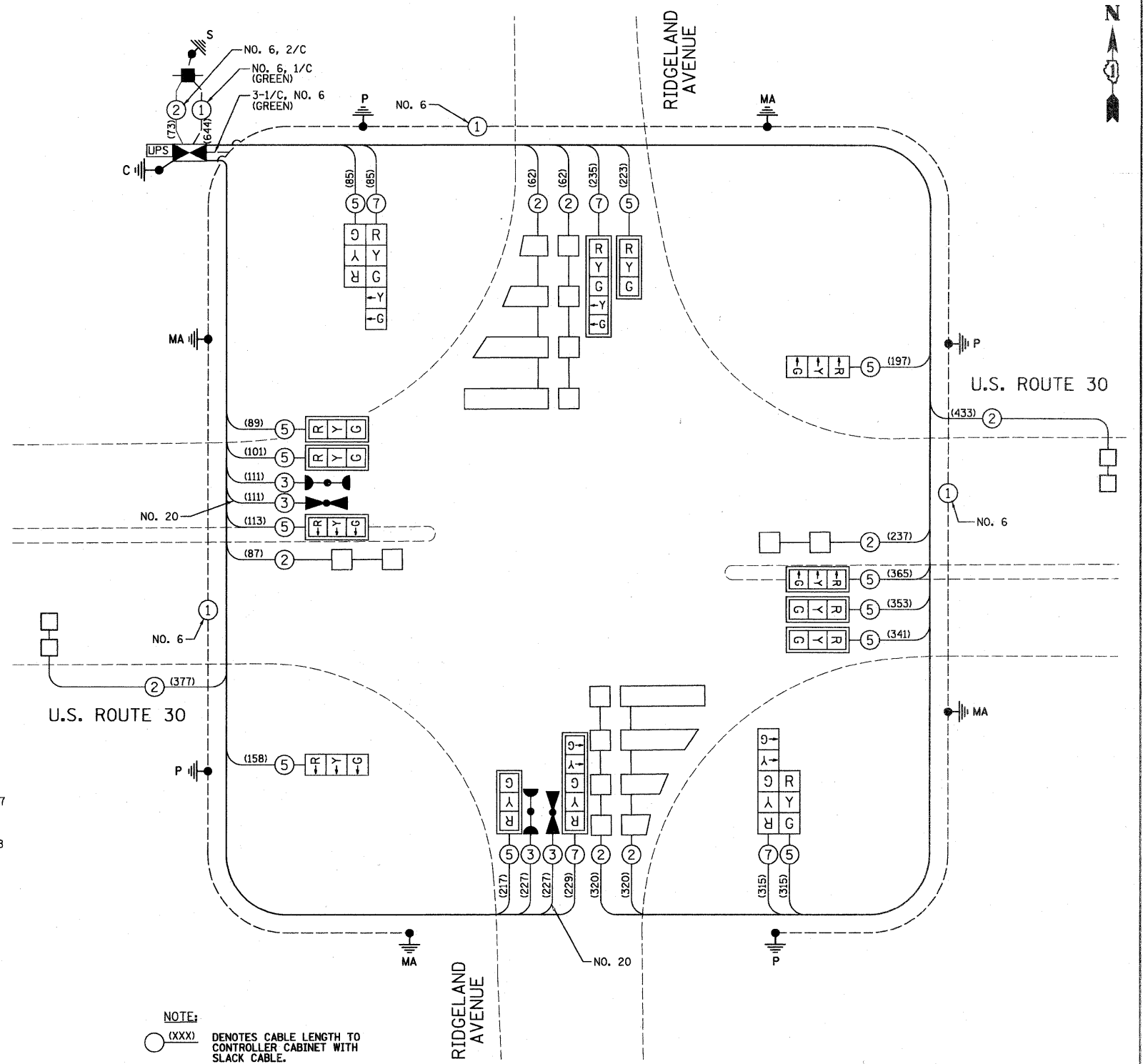
SIGN PANEL, TYPE 1	SQ FT	20
RELOCATE SIGN PANEL, TYPE 1	FOOT	33
CONDUIT IN TRENCH, 2" DIA., GALVANIZED STEEL	FOOT	597
CONDUIT IN TRENCH, 2 1/2" DIA., GALVANIZED STEEL	FOOT	136
CONDUIT IN TRENCH, 4" DIA., GALVANIZED STEEL	FOOT	40
CONDUIT PUSHED, 2" DIA., GALVANIZED STEEL	FOOT	125
CONDUIT PUSHED, 4" DIA., GALVANIZED STEEL	FOOT	347
TRENCH AND BACKFILL FOR ELECTRICAL WORK	FOOT	743
FULL-ACTUATED CONTROLLER AND TYPE IV CABINET	EACH	1
ELECTRIC CABLE IN CONDUIT, SIGNAL NO. 14 3C	FOOT	338
ELECTRIC CABLE IN CONDUIT, SIGNAL NO. 14 5C	FOOT	2557
ELECTRIC CABLE IN CONDUIT, SIGNAL NO. 14 7C	FOOT	864
ELECTRIC CABLE IN CONDUIT, SERVICE, NO. 6 2C	FOOT	73
ELECTRIC CABLE IN CONDUIT, LEAD-IN, NO. 14 1 PAIR	FOOT	1898
HANDHOLE	EACH	5
HEAVY DUTY HANDHOLE	EACH	4
DOUBLE HANDHOLE	EACH	1
TRAFFIC SIGNAL POST, GALVANIZED STEEL 14 FT.	EACH	2
TRAFFIC SIGNAL POST, GALVANIZED STEEL 16 FT.	EACH	2
STEEL MAST ARM ASSEMBLY AND POLE, 42 FT.	EACH	1
STEEL MAST ARM ASSEMBLY AND POLE, 44 FT.	EACH	1
STEEL MAST ARM ASSEMBLY AND POLE, 52 FT.	EACH	1
STEEL MAST ARM ASSEMBLY AND POLE, 54 FT.	EACH	1
CONCRETE FOUNDATION, TYPE A	FOOT	16
CONCRETE FOUNDATION, TYPE C	FOOT	4
CONCRETE FOUNDATION, TYPE E 36-INCH DIAMETER	FOOT	56
SIGNAL HEAD, LED, 1-FACE, 3-SECTION, MAST-ARM MOUNTED	EACH	8
SIGNAL HEAD, LED, 1-FACE, 3-SECTION, BRACKET MOUNTED	EACH	2
SIGNAL HEAD, LED, 1-FACE, 5-SECTION, MAST-ARM MOUNTED	EACH	2
SIGNAL HEAD, L.E.D., 2-FACE, 1-3 SECTION, 1-5 SECTION, BRACKET MOUNTED	EACH	2
TRAFFIC SIGNAL BACKPLATE, LOUVERED, ALUMINUM	EACH	10
INDUCTIVE LOOP DETECTOR	EACH	8
DETECTOR LOOP, TYPE 1	FOOT	1074
LIGHT DETECTOR	EACH	2
LIGHT DETECTOR AMPLIFIER	EACH	1
TEMPORARY TRAFFIC SIGNAL INSTALLATION	EACH	1
REMOVE ELECTRIC CABLE FROM CONDUIT	FOOT	4479
REMOVE EXISTING TRAFFIC SIGNAL EQUIPMENT	EACH	1
REMOVE EXISTING HANDHOLE	EACH	11
REMOVE EXISTING CONCRETE FOUNDATION	EACH	9
TEMPORARY TRAFFIC SIGNAL TIMING	EACH	1
SERVICE INSTALLATION, POLE MOUNT	EACH	1
ELECTRIC CABLE IN CONDUIT, GROUNDING, NO. 6 1C	FOOT	644
ELECTRIC CABLE IN CONDUIT, NO. 20 3/C, TWISTED & SHIELDED	FOOT	338
UNINTERRUPTIBLE POWER SUPPLY	EACH	1

* 100% COST TO THE VILLAGE OF MATTESON

STATE OF ILLINOIS
DEPARTMENT OF TRANSPORTATION

I.D.O.T. TRAFFIC SIGNAL INSTALLATION ELECTRICAL SERVICE REQUIREMENTS					TOTAL WATTAGE
TYPE	NO. LAMPS	WATTAGE INCAND.	LED	%OPERATION	
SIGNAL (RED)	16	135	17	0.50	136
(YELLOW)	16	135	25	0.25	100
(GREEN)	16	135	15	0.25	60
ARROW	8	135	12	0.10	9.6
PED. SIGNAL	-	90	25	1.00	-
CONTROLLER	1	100	100	1.00	100
ILLUM. SIGN	-	84	-	0.05	-
FLASHER	-	-	-	0.50	-
ENERGY COSTS TO: ILLINOIS DEPARTMENT OF TRANSPORTATION 201 W. CENTER COURT SCHAUMBURG, IL 60196					TOTAL = 405.6
ENERGY SUPPLY CONTACT: COMED					

FILE NAME = \MICROST\352083\	USER NAME = RDS	DESIGNED - KK	REVISED -
		DRAWN - RDS	REVISED -
		CHECKED - BPT	REVISED -
		DATE - 12-18-09	REVISED -
		PLOT SCALE = 1"=20'	
		PLOT DATE = 11-06-09	



CABLE PLAN

NOTE: (XXX) DENOTES CABLE LENGTH TO CONTROLLER CABINET WITH SLACK CABLE.

RESTORATION OF WORK AREA
RESTORATION OF THE TRAFFIC SIGNAL WORK AREA SHALL BE INCIDENTAL TO THE RELATED PAY ITEM SUCH AS FOUNDATION, CONDUIT, HANDHOLE, TRENCH AND BACKFILL, ETC., AND NO EXTRA COMPENSATION SHALL BE ALLOWED. ALL ROADWAY SURFACES SUCH AS SHOULDERS, MEDIANS, SIDEWALKS, PAVEMENT, ETC. SHALL BE REPLACED IN KIND, AND ALL DAMAGE TO MOWED LAWNS SHALL BE REPLACED WITH AN APPROVED SOD, WITH STANDARD SPECIFICATIONS 252 AND 250 RESPECTIVELY.

PREPARED BY:
CEMCON, Ltd.
Consulting Engineers, Land Surveyors & Planners
2280 White Oak Circle, Suite 100
Aurora, Illinois 60504-9675
Ph: 630.862.2100 Fax: 630.862.2199
E-Mail: cadd@cemcon.com Website: www.cemcon.com

F.A.P. RTE.	SECTION	COUNTY	TOTAL SHEETS	SHEET NO.
353	23-N-3	COOK	38	18
				CONTRACT NO. 60149
FED. ROAD DIST. NO. [ILLINOIS] FED. AID PROJECT				

SCHEDULE OF QUANTITIES, CABLE PLAN, PHASE DESIGNATION DIAGRAM AND EMERGENCY VEHICLE PREEMPTION U.S. ROUTE 30 AT RIDGELAND AVENUE				
SCALE: N.T.S.	SHEET NO.	OF SHEETS	STA. TO STA.	