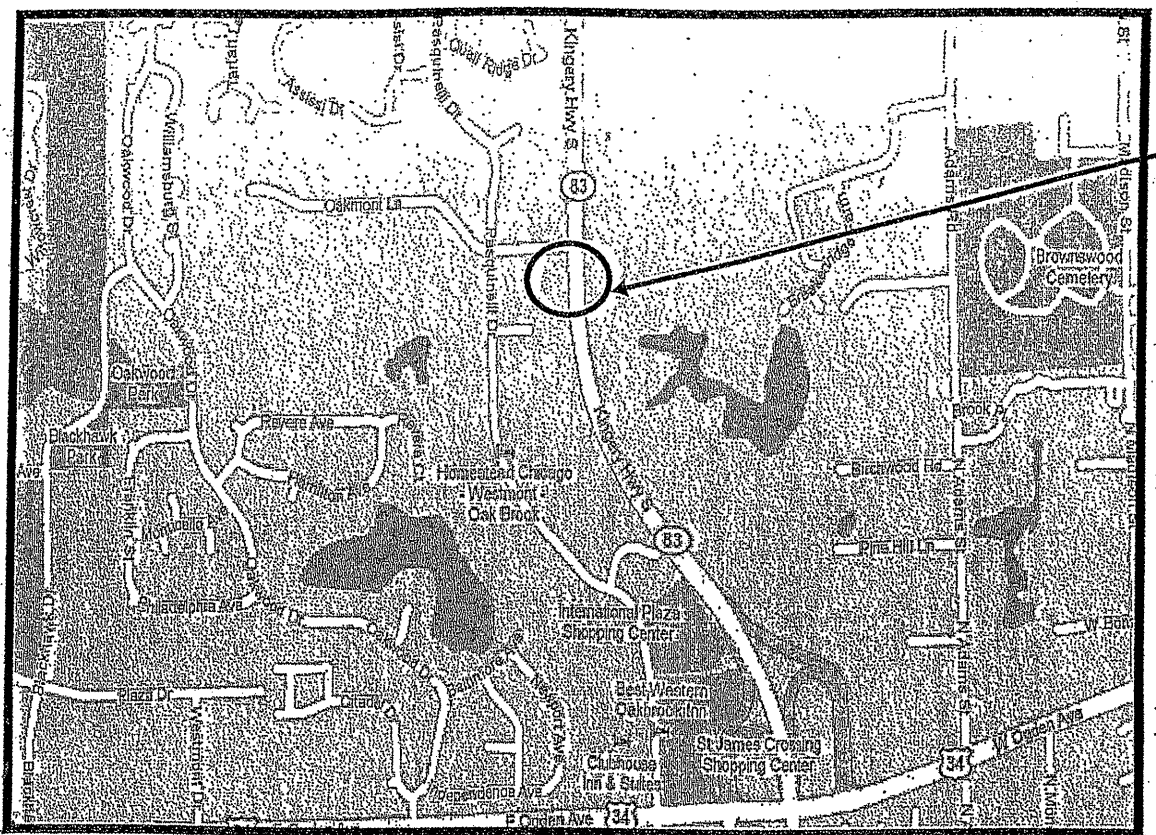


ROUTE	SECTION	COUNTY	TOTAL SHEETS	SHEET NUMBER
VARIOUS	2009-1011	VARIOUS	36	11

Contract 60163

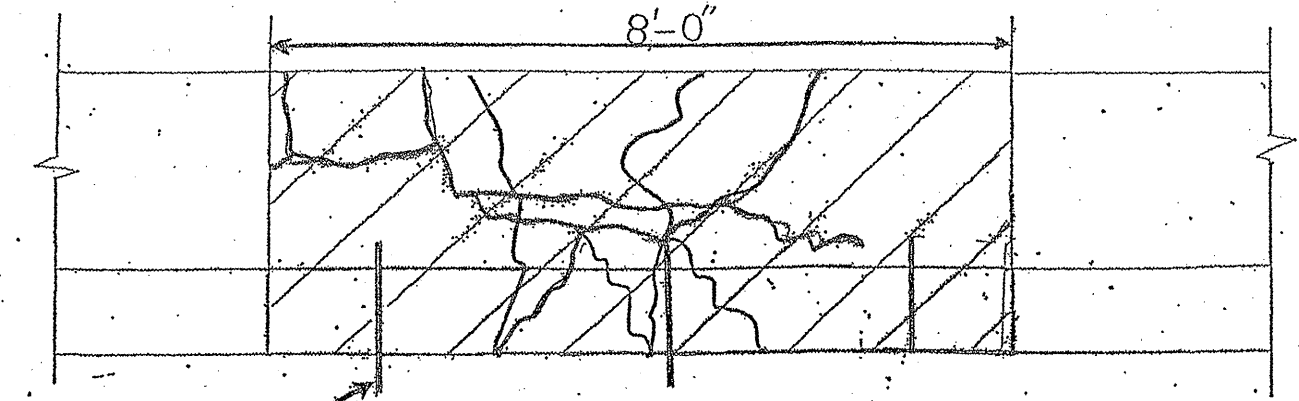
R 11 E

T 38 N



VILLAGE OF OAKBROOK  
DOWNERS GROVE TOWNSHIP  
DuPAGE COUNTY

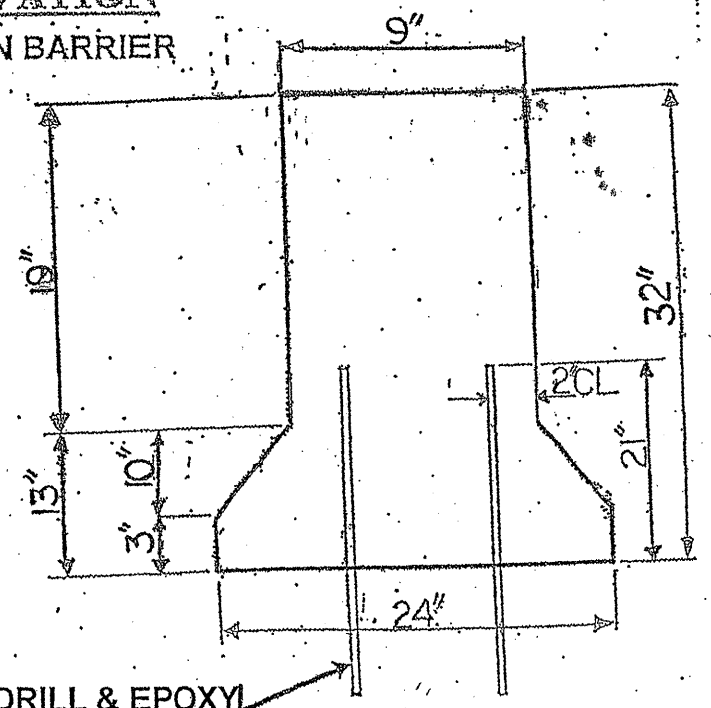
**LOCATION 1: SB AT IL ROUTE 83 BETWEEN 31<sup>ST</sup> STREET AND OGDEN AVE, 50 FEET SOUTH OF OAKMONT LANE IN FRONT OF THE PAPPADAEUX RESTAURANT.**



RE-ANCHOR TO PAVEMENT

HATCHED AREA INDICATES CONCRETE REMOVAL

**ELEVATION**  
MEDIAN BARRIER

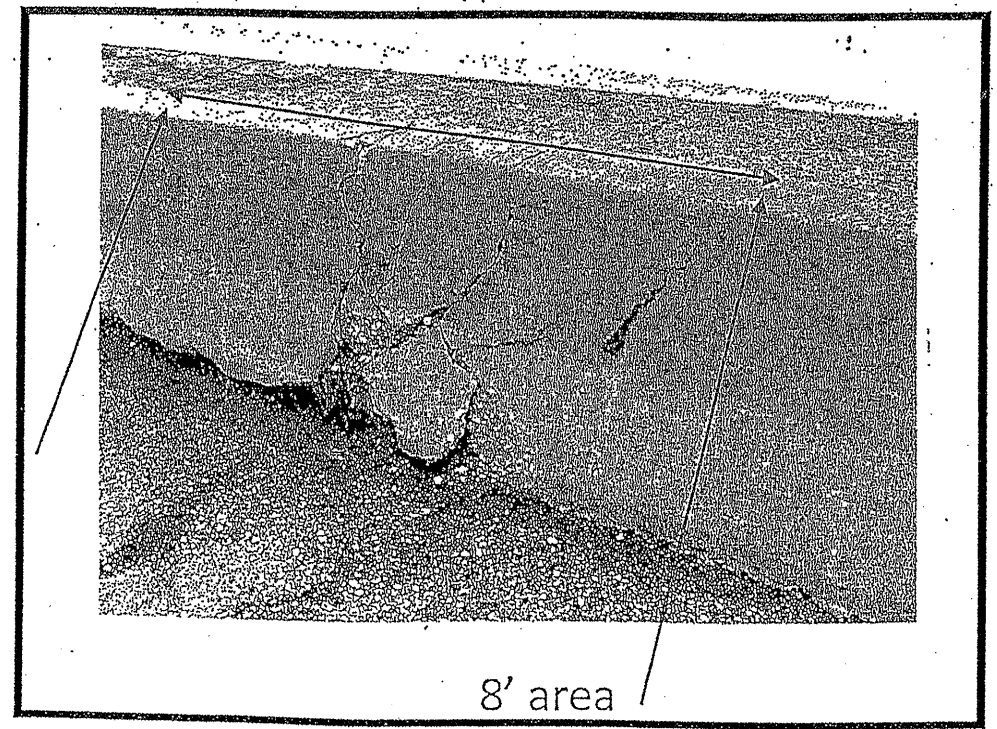


DRILL & EPOXY GROUT DOWEL BARS

**SECTION**

ILLINOIS DEPARTMENT OF TRANSPORTATION

LOCATION: 1  
IL ROUTE 83 (SB)



8' area

FULL DEPTH BARRIER REPAIR  
SEE SHEET 8 FOR MORE DETAILS

Concrete Removal (Cu Yd)	0.6
Concrete Structure (Cu Yd)	0.6
FOR INFORMATION ONLY	

**TRAFFIC DATA:**

ROUT 83: SPEED LIMIT = 45-55 MPH  
2009 ADT = 81,600