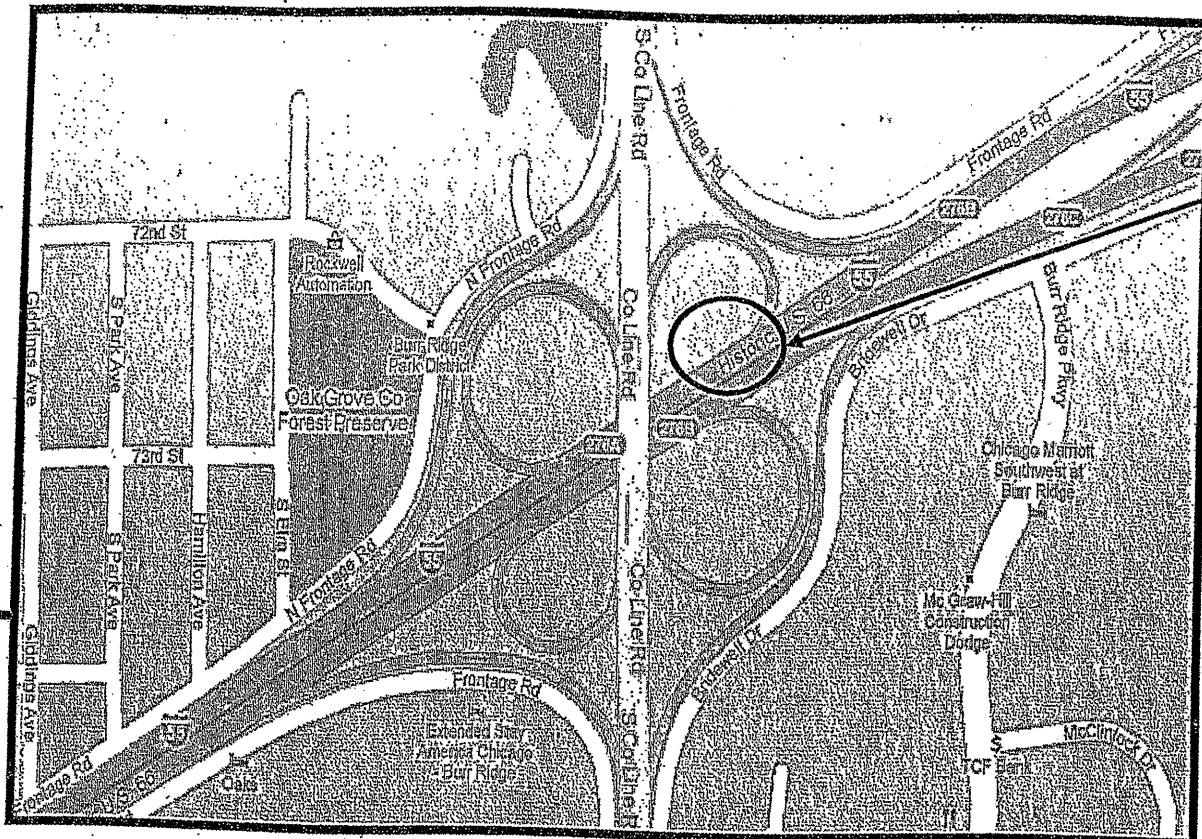


ROUTE VARIOUS	SECTION 2009-101 I	COUNTY VARIOUS	TOTAL SHEETS 36	SHEET NUMBER 12
------------------	-----------------------	-------------------	-----------------------	-----------------------

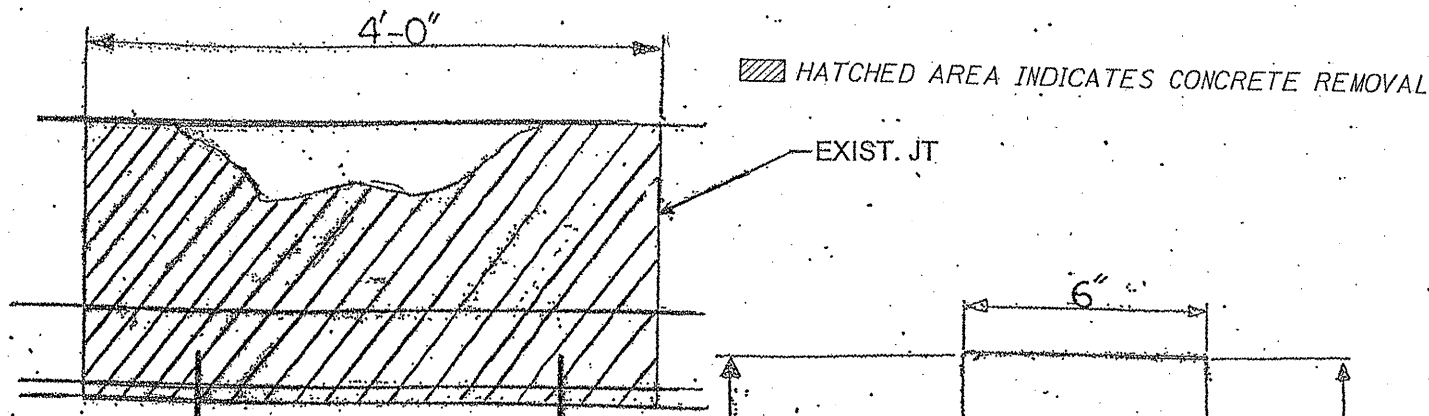
Contract 60163

R 11 E



VILLAGE OF DARIEN
DOWNERS GROVE TOWNSHIP
DuPAGE COUNTY

LOCATION 2: I-55 NB AT CASS AVE. 50 YARDS NORTH OF CASS AVE.,
LEFT-HAND MEDIAN WALL.

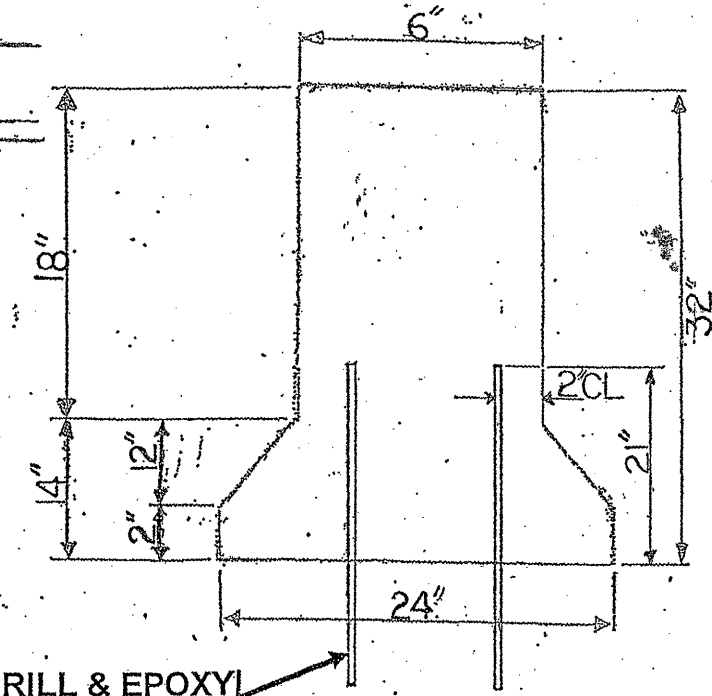


RE-ANCHOR TO
PAVEMENT

ELEVATION
MEDIAN BARRIER

HATCHED AREA INDICATES CONCRETE REMOVAL

EXIST. JT



DRILL & EPOXY
GROUT DOWEL BARS

SECTION

FULL DEPTH BARRIER REPAIR
SEE SHEET 8 FOR MORE DETAILS

Concrete Removal (Cu Yd)	0.3
Concrete Structure (Cu Yd)	0.4
FOR INFORMATION ONLY	

TRAFFIC DATA:

I-55: SPEED LIMIT = 55 MPH
2009 ADT = 164,000

ILLINOIS DEPARTMENT OF TRANSPORTATION

LOCATION: 2
I-55 (NB)

T 37 N T 38 N

FD Saw cut on both sides required.

