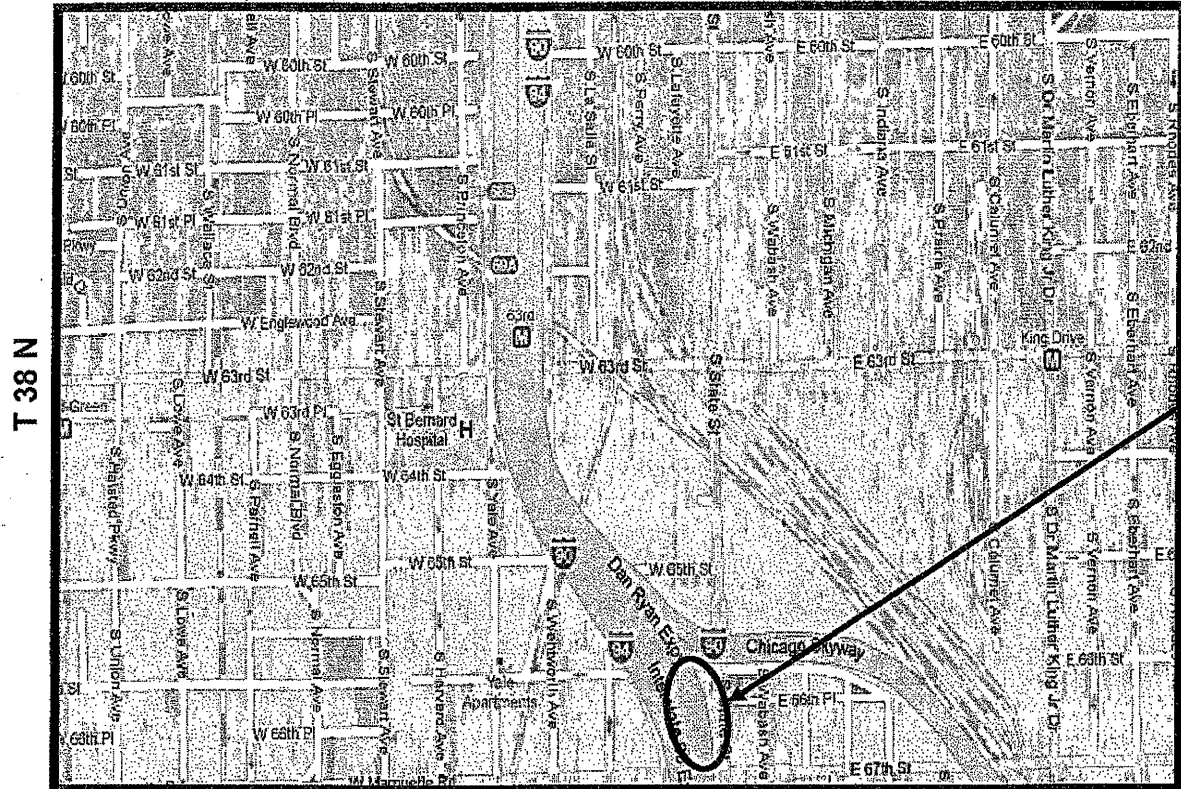


<b>ROUTE</b> VARIOUS	<b>SECTION</b> 2009-101 I	<b>COUNTY</b> VARIOUS	<b>TOTAL SHEETS</b> 36	<b>SHEET NUMBER</b> 16
-------------------------	------------------------------	--------------------------	---------------------------	---------------------------

Contract 60163

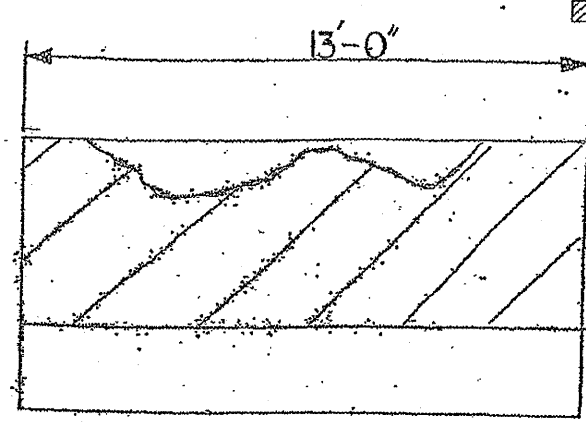
R 14 E



CITY OF CHICAGO  
LAKE AND HYDE PARK TOWNSHIP  
COOK COUNTY

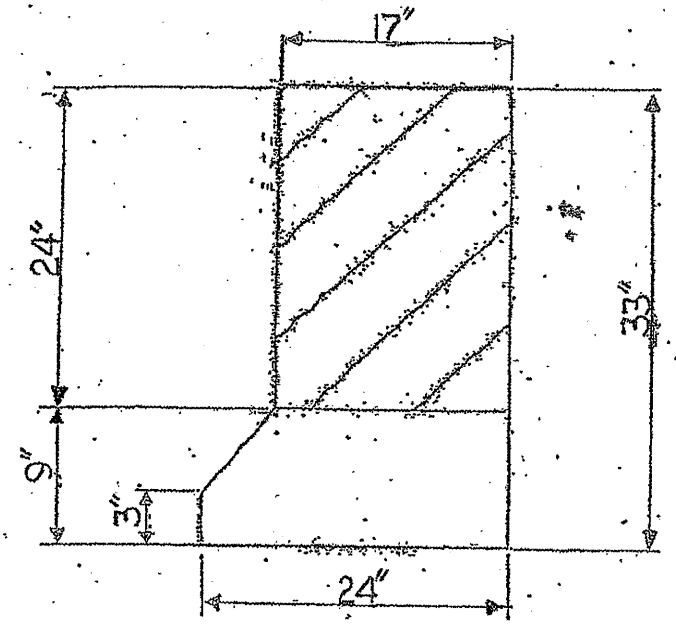
T 38 N

**LOCATION 6: I-94 NB (DAN RYAN) LOCAL LANES LEFT SIDE APPROX. 66<sup>th</sup> STREET.**

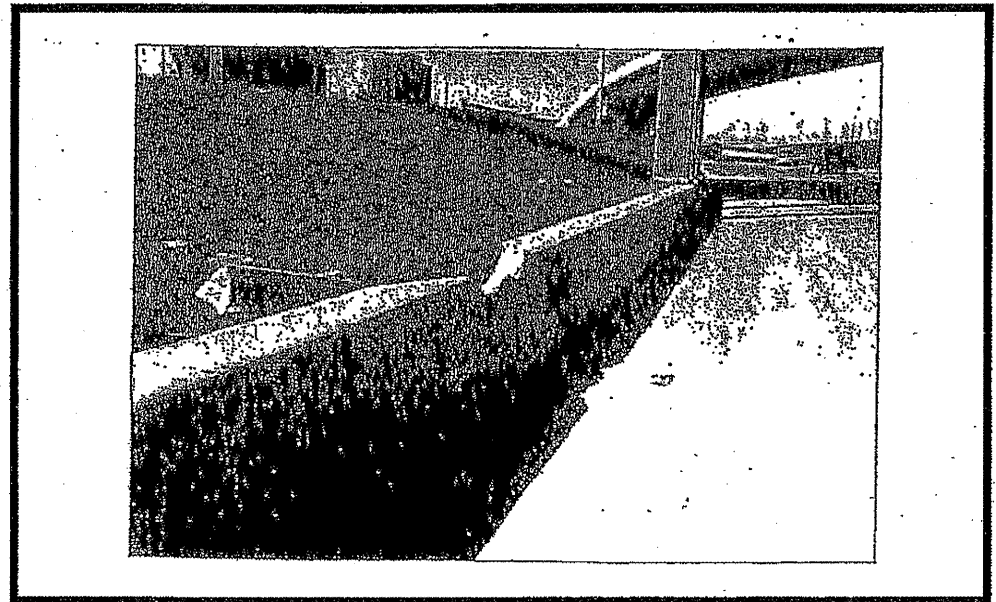


ELEVATION

*HATCHED AREA INDICATES CONCRETE REMOVAL*



SECTION



HALF DEPTH BARRIER REPAIR  
SEE SHEET 9 FOR MORE DETAILS

Concrete Removal (Cu Yd)	2.1
Concrete Structure (Cu Yd)	2.1
FOR INFORMATION ONLY	

**TRAFFIC DATA:**

I-94: SPEED LIMIT = 55 MPH  
2009 ADT = 179,000

ILLINOIS DEPARTMENT OF TRANSPORTATION  
  
LOCATION: 6  
I-94 (NB)