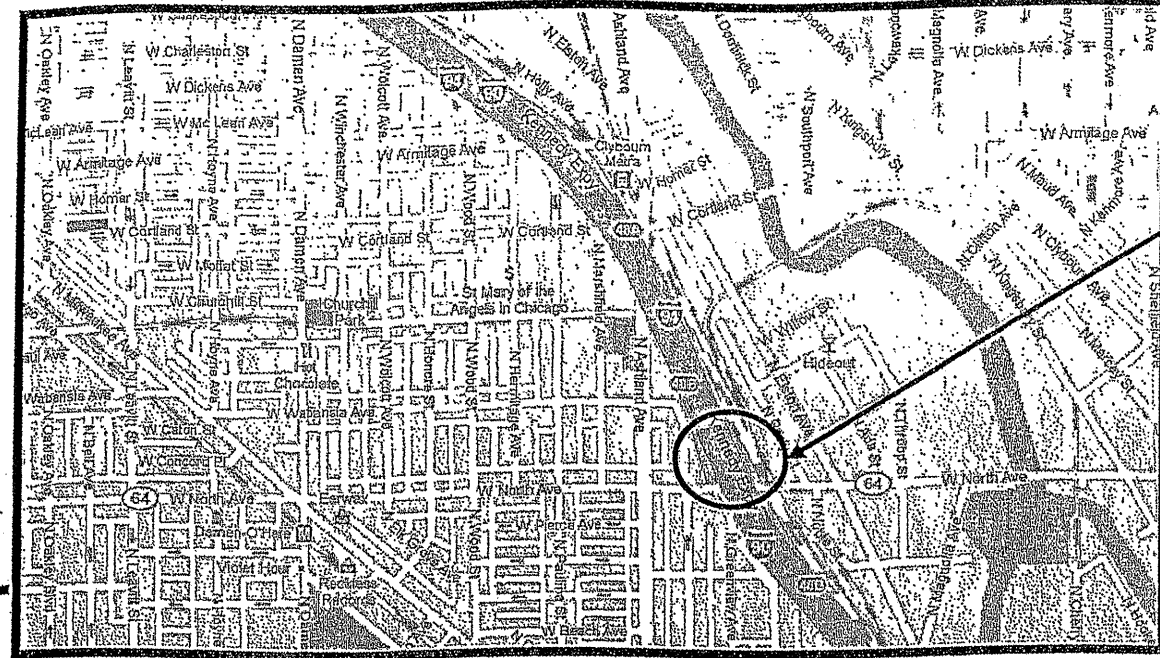


ROUTE VARIOUS	SECTION 2009-1011	COUNTY VARIOUS	SHEETS 36	SHEET NUMBER 22
------------------	----------------------	-------------------	--------------	-----------------------

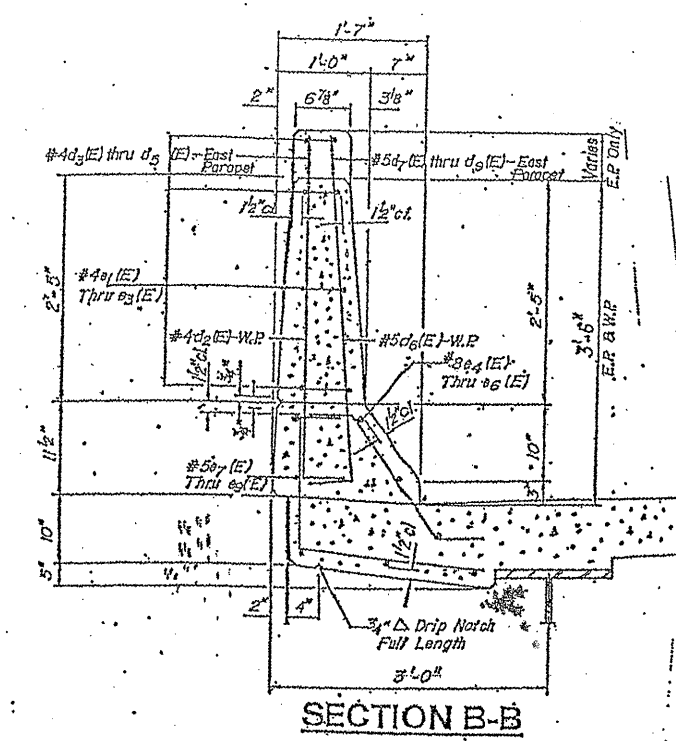
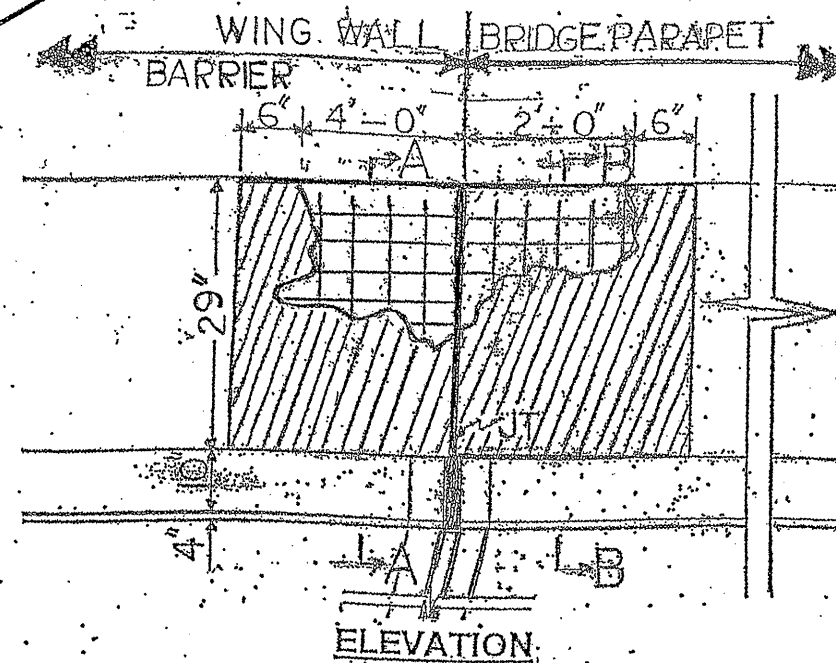
R 14 E

Contract 60163



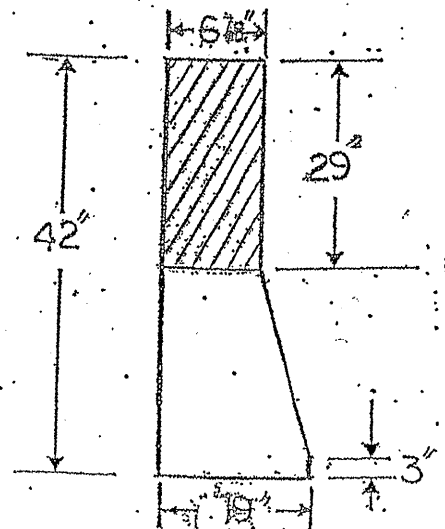
CITY OF CHICAGO
WEST CHICAGO TOWNSHIP
COOK COUNTY

**LOCATION 11: I-90/94 SEB (JFK) AT SOUTH ABUTMENT OF IL 64 (NORTH AVE.)
BRIDGE RIGHT SIDE, SN 016-0134**



SECTION B-B

HATCHED AREA INDICATES CONCRETE REMOVAL
□ INDICATES LIMITS OF CONCRETE STRUCTURES



SECTION A-A

ALL REINFORCEMENT BARS
SHALL BE EPOXY COATED (E)

BRIDGE PARAPET REPAIR
SEE SHEET 10 FOR MORE DETAILS

Bar	No.	Size	Length	Shape
e	6	#4	2'-3"	—
e ₁	6	#4	4'-3"	—
Mechanical Splicers		Each	6	
Reinforcement Bars, Epoxy Coated		Lbs.	30	
Concrete Superstructure		Cu. Yds.	0.4	
Concrete Removal		Cu. Yds.	0.4	

FOR INFORMATION ONLY



TRAFFIC DATA:
I-90/94: SPEED LIMIT = 55 MPH
2009 ADT = 286,300

ILLINOIS DEPARTMENT OF TRANSPORTATION

LOCATION: 11
I-90/94 (JFK)
SN 016-0134