

F.A.P. RTE.	SECTION	COUNTY	TOTAL SHEETS	SHEET NO.
607	13 RS-6	WILL	28	1
FED. ROAD DIST. NO.	ILLINOIS	CONTRACT NO. 60167		

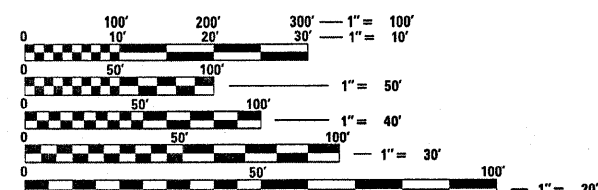
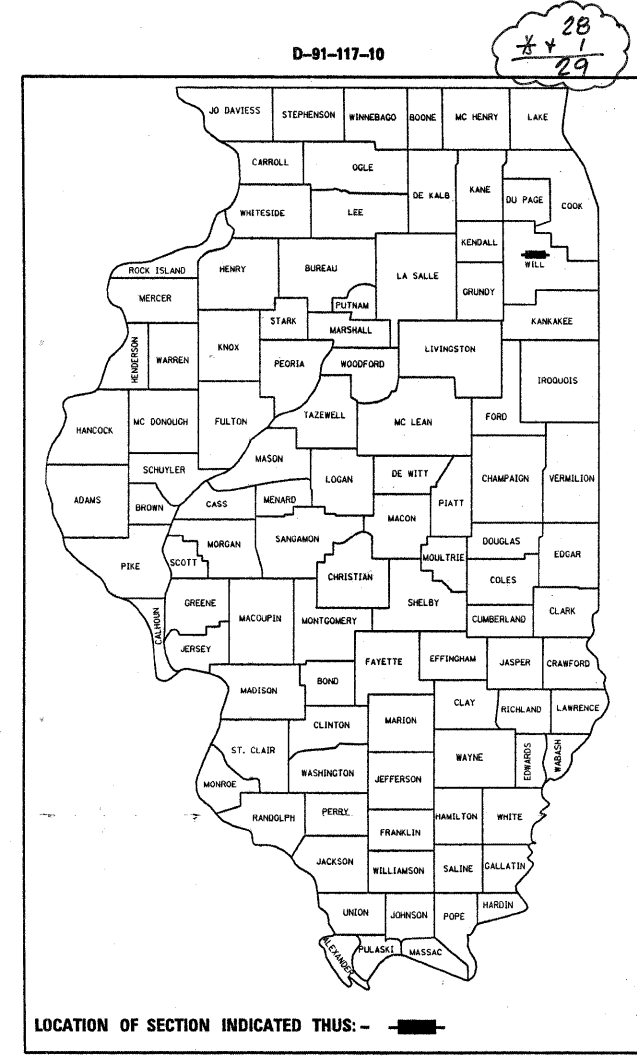
STATE OF ILLINOIS
DEPARTMENT OF TRANSPORTATION
DIVISION OF HIGHWAYS

**PROPOSED
HIGHWAY PLANS**

F.A.P. ROUTE 607 (US ROUTE 30)
KRAKAR AVE. TO I-80
SECTION: 13 RS-6
PROJECT: --
RESURFACING
WILL COUNTY
C-91-117-10

FOR INDEX OF SHEETS, SEE SHEET NO. 2

THE PROJECT IS LOCATED IN THE CITY OF JOLIET AND THE VILLAGE OF NEW LENOX IN WILL COUNTY.

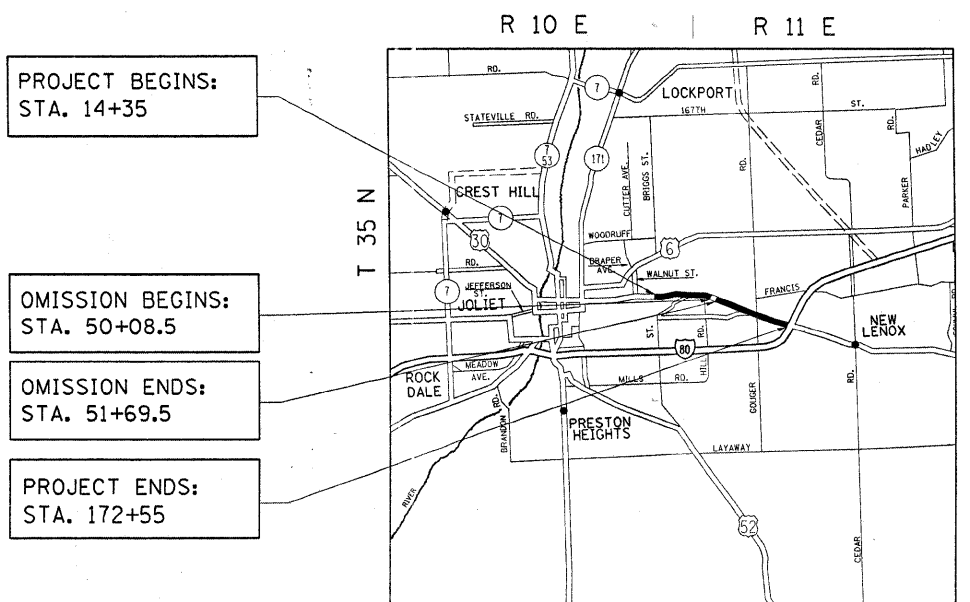


FULL SIZE PLANS HAVE BEEN PREPARED USING STANDARD ENGINEERING SCALES. REDUCED SIZED PLANS WILL NOT CONFORM TO STANDARD SCALES. IN MAKING MEASUREMENTS ON REDUCED PLANS, THE ABOVE SCALES MAY BE USED.

J.U.L.I.E.
JOINT UTILITY LOCATION INFORMATION FOR EXCAVATION
1-800-392-0123
OR 811

PROJECT ENGINEER: KARI SMITH (847) 705-4437
PROJECT MANAGER: KEN ENG

CONTRACT NO. 60167



PROJECT BEGINS:
STA. 14+35

OMISSION BEGINS:
STA. 50+08.5

OMISSION ENDS:
STA. 51+69.5

PROJECT ENDS:
STA. 172+55

JOLIET TOWNSHIP & NEW LENOX TOWNSHIP

GROSS LENGTH OF IMPROVEMENT = 15,820 FEET = 3.0 MILES
NET LENGTH OF IMPROVEMENT = 15,659 FEET = 2.97 MILES



TRAFFIC DATA
2006 ADT = 19,700
POSTED SPEED LIMIT= 40-45 MPH

STATE OF ILLINOIS
DEPARTMENT OF TRANSPORTATION
DIVISION OF HIGHWAYS

SUBMITTED JANUARY 26 2010

Diana M. O'Keefe
DEPUTY DIRECTOR OF HIGHWAYS, REGION ENGINEER

March 19, 2010
Scott E. Stitt, P.E.
ENGINEER OF DESIGN AND ENVIRONMENT

March 19, 2010
Christine M. Reed
DIRECTOR OF HIGHWAYS, CHIEF ENGINEER

**PRINTED BY THE AUTHORITY
OF THE STATE OF ILLINOIS**

Rev. 5-26-10

INDEX OF SHEETS

GENERAL NOTES

<u>SHEET NO.</u>	<u>DESCRIPTION</u>
1	TITLE SHEET
2	INDEX OF SHEETS, STATE STANDARDS & GENERAL NOTES
3	SUMMARY OF QUANTITIES
4-6A	EXISTING AND PROPOSED TYPICAL SECTIONS
7-12	ROADWAY AND PAVEMENT MARKING PLANS
13-16	DETECTOR LOOP REPLACEMENT SHEETS
17	DETAILS FOR FRAMES AND LIDS ADJUSTMENT WITH MILLING
18	PAVEMENT PATCHING FOR HMA SURFACED PAVEMENT
19	CURB OR CURB AND GUTTER REMOVAL AND REPLACEMENT
20	BUTT JOINT AND HMA TAPER
21	TRAFFIC CONTROL AND PROTECTION FOR SIDE ROADS, INTERSECTIONS, AND DRIVEWAYS
22	TYPICAL APPLICATIONS RAISED REFLECTIVE PAVEMENT MARKERS (SNOW-PLOW RESISTANT)
23	DISTRICT ONE TYPICAL PAVEMENT MARKINGS
24	TRAFFIC CONTROL AND PROTECTION AT TURN BAYS (TO REMAIN OPEN TO TRAFFIC)
25	PAVEMENT MARKING LETTERS AND SYMBOLS FOR TRAFFIC STAGING
26	ARTERIAL INFORMATION SIGNING
27	STANDARD TRAFFIC SIGNAL DESIGN DETAILS
28	DETECTOR LOOP INSTALLATION DETAIL FOR ROADWAY RESURFACING

BEFORE STARTING ANY EXCAVATION, THE CONTRACTOR SHALL CALL "JULIE" AT (800) 892-0123 OR 811 FOR FIELD LOCATIONS OF BURIED ELECTRIC, TELEPHONE, AND GAS FACILITIES. (48 HOUR NOTIFICATION REQUIRED)

THE CONTRACTOR SHALL COORDINATE CONSTRUCTION ACTIVITIES WITH THE VILLAGE OF NEW LENOX AND THE CITY OF JOLIET AND UTILITY COMPANIES.

THE CONTRACTOR WILL NOT BE ABLE TO SET UP A YARD OR FIELD OFFICE ON STATE PROPERTY WITHOUT THE WRITTEN PERMISSION OF THE DEPARTMENT.

BUTT JOINTS WILL BE INSTALLED AT THE ENDS OF RESURFACING (WHERE RESURFACING MEETS EXISTING PAVEMENT) IN ACCORDANCE WITH THE "BUTT JOINT AND HMA TAPER DETAILS" SHEET INCLUDED IN THE PLANS UNLESS OTHERWISE SPECIFIED.

THE RESIDENT ENGINEER SHALL CONTACT MS. CORA MATHIS, AREA TRAFFIC FIELD ENGINEER, AT (847) 715-8428 A MINIMUM OF 2 WEEKS PRIOR TO PLACEMENT OF FINAL PAVEMENT MARKINGS.

WHEN MILLED PAVEMENT IS OPEN TO TRAFFIC, THE MAXIMUM GRADE DIFFERENTIAL BETWEEN PASSES OF THE MILLING MACHINE SHALL NOT EXCEED 1 1/2 INCHES WHERE THE SPEED LIMIT IS 45 MPH OR LESS, AND 1 INCH WHERE THE SPEED LIMIT IS OVER 45 MPH. WITH WRITTEN APPROVAL FROM THE RESIDENT ENGINEER, A MAXIMUM GRADE DIFFERENTIAL OF 3 INCHES MAY BE ALLOWED IF THE EDGE OF THE MILLING IS SLOPED A MINIMUM OF 1:3 (V:H).

THE RESIDENT ENGINEER SHALL VERIFY LOCATIONS OF ALL EXISTING PAVEMENT MARKINGS PRIOR TO MILLING OR RESURFACING.

THE RESIDENT ENGINEER SHALL CONTACT THE TRAFFIC CONTROL SUPERVISOR AT (847) 705-4470 A MINIMUM OF 72 HOURS PRIOR TO THE INSTALLATION OF ANY TEMPORARY TRAFFIC CONTROL DEVICES.

LOCATIONS OF CLASS D PATCHING AND COMBINATION CURB AND GUTTER REMOVAL AND REPLACEMENT TO BE DETERMINED IN THE FIELD BY THE RESIDENT ENGINEER.

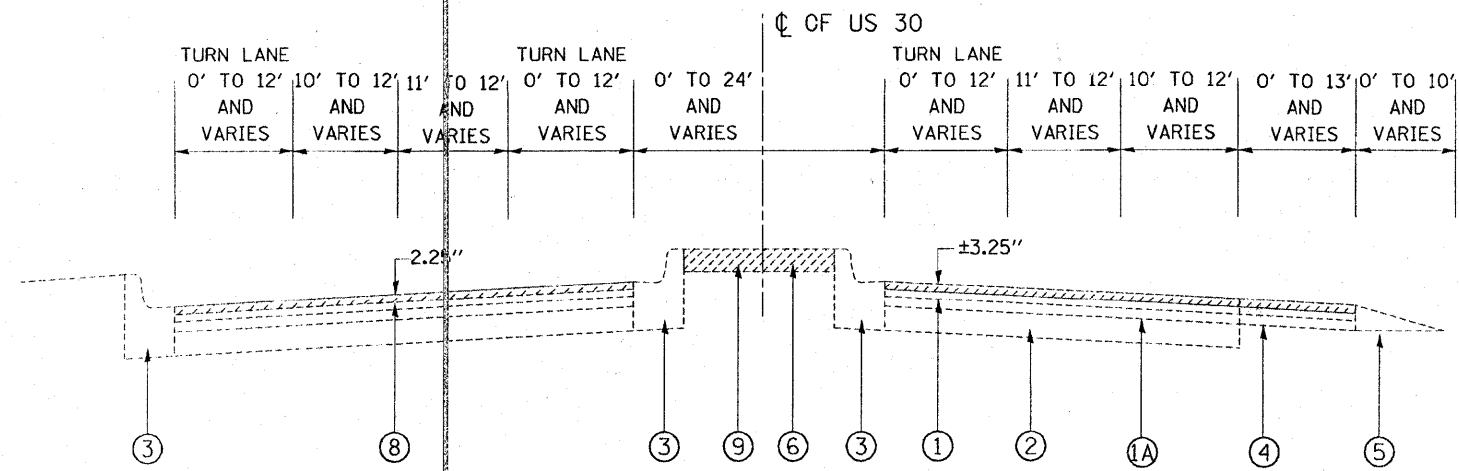
STATE STANDARDS

<u>STANDARD NO.</u>	<u>DESCRIPTION</u>
000001-05	TYPICAL SYMBOLS, ABBREVIATIONS AND PATTERNS
001001-02	REINFORCEMENT BARS, AREAS WEIGHTS, AND SPACING
442201-03	CLASS C AND D PATCHES
604001-03	FRAME AND LID, TYPE 1
604091-02	FRAME AND GRATE, TYPE 24
606001-04	COMBINATION CONCRETE CURB AND GUTTER
606301-04	MEDIAN, CONCRETE
701701-06	URBAN LANE CLOSURE, MULTILANE INTERSECTION
701901-01	TRAFFIC CONTROL DEVICES
701501-05	URBAN LANE CLOSURE, 2L, 2W
701301-03	TRAFFIC CONTROL & PROTECTION
701502-03	URBAN LANE CLOSURE, 2L, 2W, WITH BIDIRECTIONAL LEFT TURN LANE
701601-06	URBAN LANE CLOSURE, MULTILANE, 2W WITH NONTRAVERSABLE MEDIAN

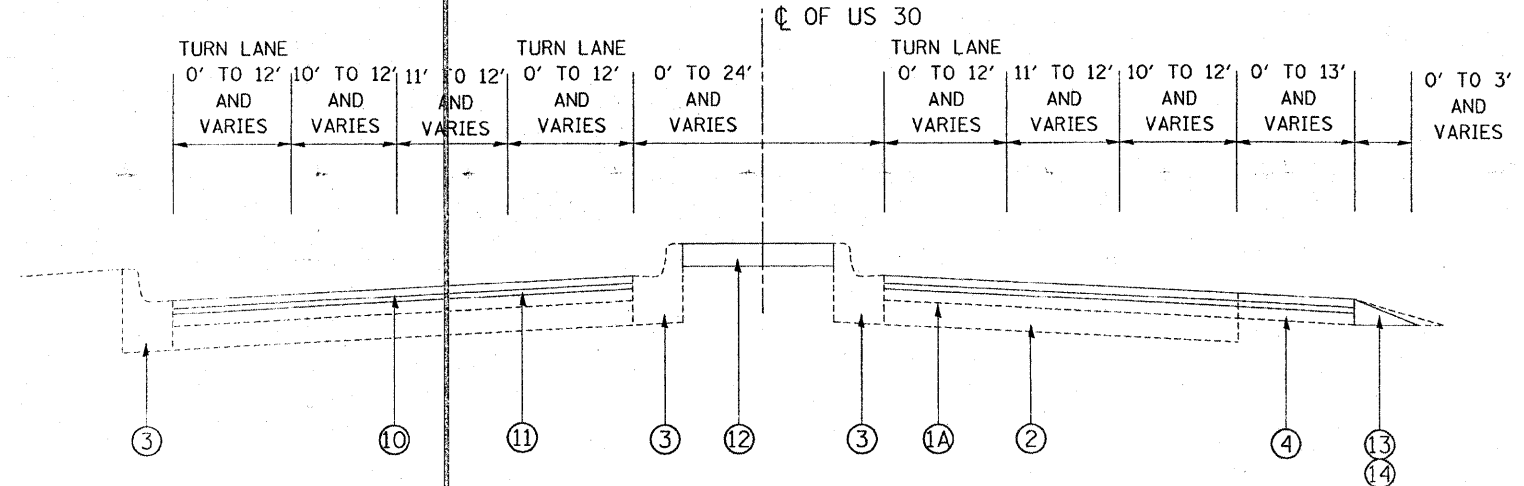
FILE NAME =	USER NAME = rootrejm	DESIGNED J M ROSIERE	REVISED - Δ 5/20/10 K.S.	STATE OF ILLINOIS DEPARTMENT OF TRANSPORTATION	US 30 (KRAKAR AVE. TO I-80) INDEX OF SHEETS, STATE STANDARDS AND GENERAL NOTES	F.A.P. RTE.	SECTION	COUNTY	TOTAL SHEETS	SHEET NO.
c:\pwork\p\aidot\rosiere.jm\0167342\011	718-sht-plan.dgn	DRAWN J M ROSIERE	REVISED -			607	13 RS-6	WIL	28	2
	PLOT SCALE = 50,0000' / 1" =	CHECKED -	REVISED -			CONTRACT NO. 60167				
	PLOT DATE = 1/30/2010	DATE -	REVISED -			SCALE: NOT TO SCALE SHEET NO. OF SHEETS STA. TO STA. FED. ROAD DIST. NO. 1 ILLINOIS FED. AID PROJECT				

SUMMARY OF QUANTITIES				CONSTRUCTION TYPE CODE				SUMMARY OF QUANTITIES				CONSTRUCTION TYPE CODE				
CODE NO	ITEM	UNIT	TOTAL QUANTITIES	1000				CODE NO	ITEM	UNIT	TOTAL QUANTITIES	1000				
20201006	GRADING AND SHAPING SHOULDERS	UNIT	55	55				70102635	TRAFFIC CONTROL AND PROTECTION, STANDARD 701701	L SUM	1	1				
21101615	TOPSOIL FURNISH AND PLACE, 4"	SO YD	87	87				70103815	TRAFFIC CONTROL SURVEILLANCE	CAL DA	5	5				
25200110	SODDING, SALT TOLERANT	SO YD	87	87				70300100	SHORT-TERM PAVEMENT MARKING	FOOT	16461	16461				
40600200	BITUMINOUS MATERIALS (PRIME COAT)	TON	61	61				70300210	TEMPORARY PAVEMENT MARKING - LETTERS AND SYMBOLS	SO FT	657	657				
40600300	AGGREGATE (PRIME COAT)	TON	305	305				70300220	TEMPORARY PAVEMENT MARKING - LINE 4"	FOOT	45562	45562				
40600400	MIXTURE FOR CRACKS, JOINTS, AND FLANGEWAYS	TON	113	113				70300240	TEMPORARY PAVEMENT MARKING - LINE 6"	FOOT	1844	1844				
40600826	POLYMERIZED LEVELING BINDER (MACHINE METHOD), IL-4.75, N50	TON	3151	3151				70300260	TEMPORARY PAVEMENT MARKING - LINE 12"	FOOT	77	77				
40600895	CONSTRUCTING TEST STRIP	EACH	2	2				70300280	TEMPORARY PAVEMENT MARKING - LINE 24"	FOOT	172	172				
40600982	HOT-MIX ASPHALT SURFACE REMOVAL - BUTT JOINT	SO YD	803	803				70301000	WORK ZONE PAVEMENT MARKING REMOVAL	SO FT	5487	5487				
40603340	HOT-MIX ASPHALT SURFACE COURSE, MIX "D", N70	TON	6346	6346				78000100	THERMOPLASTIC PAVEMENT MARKING - LETTERS AND SYMBOLS	SO FT	657	657				
42001200	PAVEMENT FABRIC	SO YD	130	130				78000200	THERMOPLASTIC PAVEMENT MARKING - LINE 4"	FOOT	45545	45545				
42001300	PROTECTIVE COAT	SO YD	1228	1228				78000400	THERMOPLASTIC PAVEMENT MARKING - LINE 6"	FOOT	1844	1844				
44000158	HOT-MIX ASPHALT SURFACE REMOVAL, 2 1/4"	SO YD	75059	75059				78000600	THERMOPLASTIC PAVEMENT MARKING - LINE 12"	FOOT	77	77				
44001700	COMBINATION CONCRETE CURB AND GUTTER REMOVAL AND REPLACEMENT	FOOT	950	950				78000650	THERMOPLASTIC PAVEMENT MARKING - LINE 24"	FOOT	172	172				
44002020	CONCRETE MEDIAN SURFACE REMOVAL	SO FT	6562	6562				78100100	RAISED REFLECTIVE PAVEMENT MARKER	EACH	470	470				
44200970	CLASS B PATCHES, TYPE II, 10 INCH	SO YD	158	158				78300200	RAISED REFLECTIVE PAVEMENT MARKER REMOVAL	EACH	365	365				
44200974	CLASS B PATCHES, TYPE III, 10 INCH	SO YD	130	130				88600600	DETECTOR LOOP REPLACEMENT	FOOT	1143	1143				
44201789	CLASS D PATCHES, TYPE II, 12 INCH	SO YD	25	25				X0322256	TEMPORARY INFORMATION SIGNING	SO FT	206.6	206.6				
44201827	CLASS D PATCHES, TYPE II, 15 INCH	SO YD	1513	1513				Z0017202	DOWEL BARS 1 1/2"	EACH	860	860				
44201831	CLASS D PATCHES, TYPE III, 15 INCH	SO YD	631	631				Z0018500	DRAINAGE STRUCTURES TO BE CLEANED	EACH	45	45				
44201833	CLASS D PATCHES, TYPE IV, 15 INCH	SO YD	379	379				Z0048665	RAILROAD PROTECTIVE LIABILITY INSURANCE	L SUM	1	1				
44213200	SAW CUTS	FOOT	408	408				31101200	SUB-BASE GRANULAR MATERIAL, TYPE B 4"	SO YD	5,461	5,461				
48102100	AGGREGATE WEDGE SHOULDER, TYPE B	TON	110	110				35300415	PORTLAND CEMENT CONCRETE BASE COURSE 9 3/4"	SO YD	470	470				
60300105	FRAMES AND GRATES TO BE ADJUSTED	EACH	7	7				44000100	PAVEMENT REMOVAL	SO YD	355	355				
60300310	FRAMES AND LIDS TO BE ADJUSTED (SPECIAL)	EACH	17	17				44003100	MEDIAN REMOVAL	SO FT	7680	7680				
60404950	FRAMES AND GRATES, TYPE 24	EACH	12	12				60500060	REMOVING INLETS	EACH	1	1				
60618300	CONCRETE MEDIAN SURFACE, 4 INCH	SO FT	11,054	11,054												
67000400	ENGINEER'S FIELD OFFICE, TYPE A	CAL MO	6	6												
67100100	MOBILIZATION	L SUM	1	1												
70102620	TRAFFIC CONTROL AND PROTECTION, STANDARD 701501	L SUM	1	1												
70102622	TRAFFIC CONTROL AND PROTECTION, STANDARD 701502	L SUM	1	1												
70102630	TRAFFIC CONTROL AND PROTECTION, STANDARD 701601	L SUM	1	1												

Rev 5-26-10



EXISTING TYPICAL SECTION
US 30
STA. 122+50 TO STA. 172+55



PROPOSED TYPICAL SECTION
US 30
STA. 122+50 TO STA. 172+55

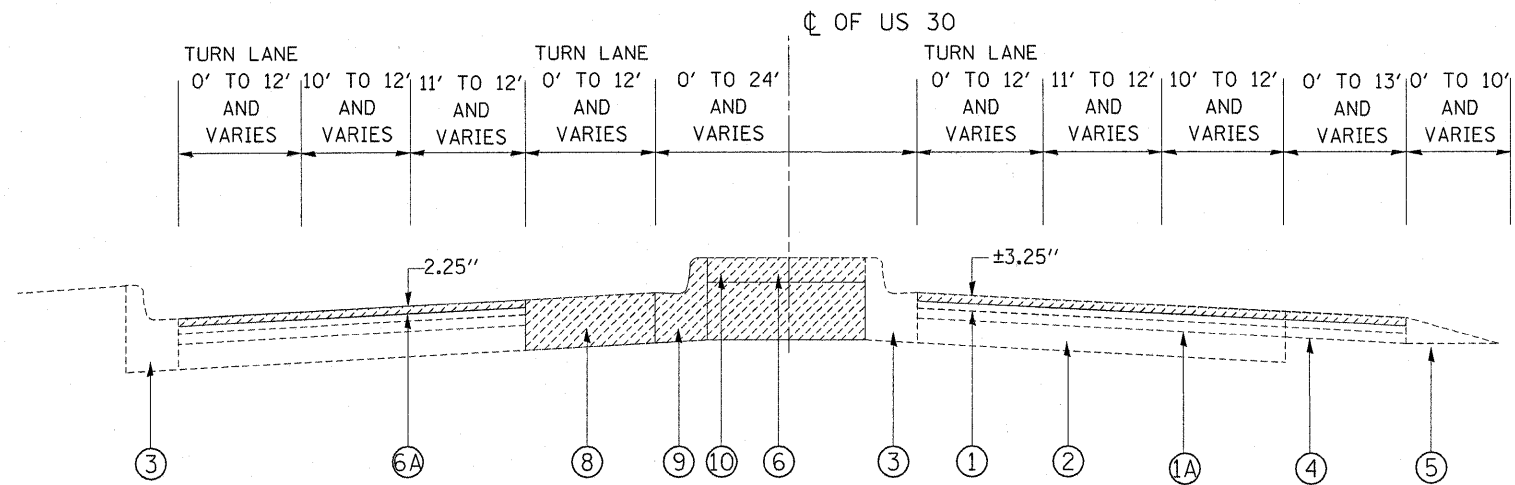
LEGEND

- ① EXISTING H.M.A. SURFACE
- ①A EXISTING H.M.A. BASE COURSE, ±7"
- ② EXISTING P.C.C. BASE COURSE, ±7"
- ③ EXISTING COMB. CONCRETE CURB & GUTTER
- ④ EXISTING H.M.A. SHOULDER
- ⑤ EXISTING AGGREGATE SHOULDER
- ⑥ EXISTING CONCRETE MEDIAN SURFACE, 4"
- ⑦ EXISTING JOINTED P.C.C SURFACE COURSE, ±10"
- ⑧ PROPOSED H.M.A SURFACE COURSE REMOVAL, 2.25"
- ⑨ PROPOSED CONCRETE MEDIAN SURFACE REMOVAL
- ⑩ PROPOSED H.M.A. SURFACE COURSE MIX "D", N70, 1.5"
- ⑪ PROPOSED POLYMERIZED LEV. BINDER (MM), IL-4.75, N50, 0.75"
- ⑫ PROPOSED CONCRETE MEDIAN SURFACE, 4" (STA. 122+40 TO STA. 126+69)
- ⑬ PROPOSED AGG. WEDGE SHOULDER, TYPE B
- ⑭ PROPOSED SHAPING AND GRADING SHOULDERS

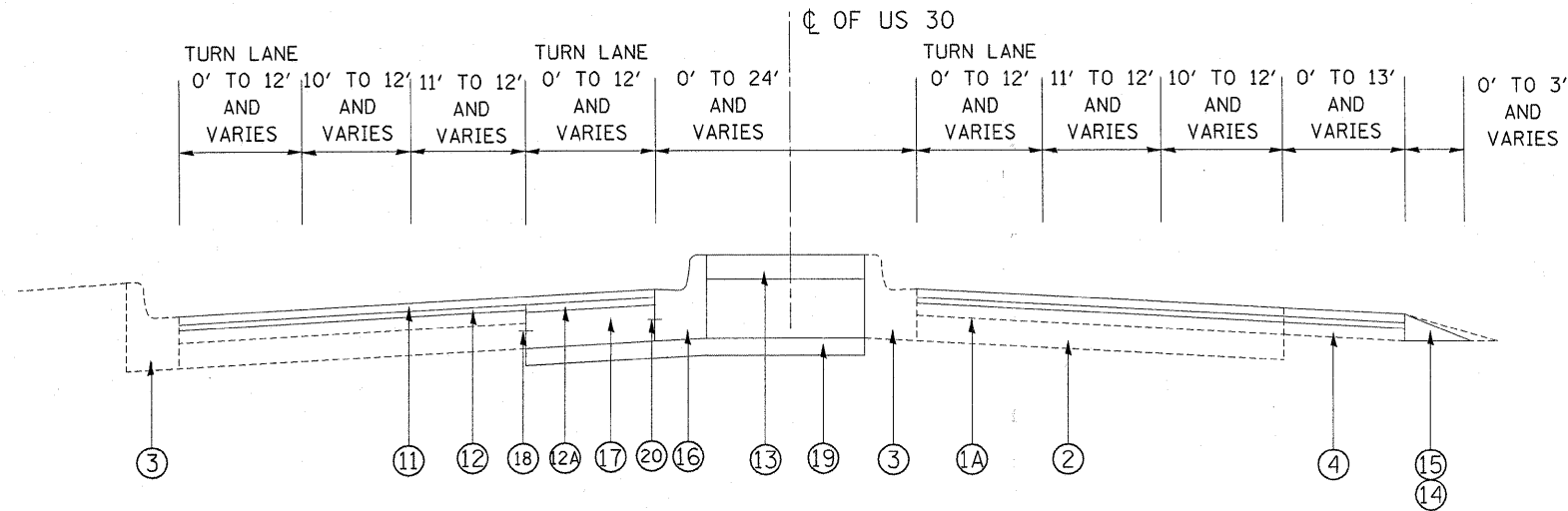
NOTE:
SEE TYPICAL SECTION SHEET 6A FOR PROPOSED MEDIAN WORK FROM STA. 138+10.7 TO STA. 142+47.2.

- * NOTES:
1. SEE ROADWAY AND PAVEMENT MARKING PLAN SHEETS FOR LOCATIONS OF LEFT TURN LANES, RIGHT TURN LANES, PAINTED MEDIAN, CONCRETE MEDIAN, CURB & GUTTER AND AGGREGATE AND HMA SHOULDER.
 2. PAVEMENT PATCHING SHALL BE DONE FOLLOWING ROADWAY MILLING.

FILE NAME =	USER NAME = rosier/jm	DESIGNED J M ROSIERE	REVISED - A 5/20/10 K.S.	STATE OF ILLINOIS DEPARTMENT OF TRANSPORTATION	US 30 (KRAKAR AVE. TO I-80) EXISTING AND PROPOSED TYPICAL SECTIONS		F.A.P. RTE. 607	SECTION 13 RS-6	COUNTY WILL	TOTAL SHEETS 28	SHEET NO. 6	
ct:\pwork\p\7011\ROSIERE\JK\0167342\10171718-sh-t-plac.dgn	PLT SCALE = 50,0000' / IN.	DRAWN J M ROSIERE	REVISOR -		SCALE: NOT TO SCALE	SHEET NO. 3 OF 3 SHEETS	STA. TO STA.	FED. ROAD DIST. NO. 1 ILLINOIS FED. AID PROJECT				
	PLT DATE = 1/30/2010	CHECKED -	REVISOR -									
		DATE -	REVISOR -									



EXISTING TYPICAL SECTION
US 30
STA. 138+10.7 TO STA. 142+47.2



PROPOSED TYPICAL SECTION
US 30
STA. 138+10.7 TO STA. 142+47.2

LEGEND

- ① EXISTING H.M.A. SURFACE
- ①A EXISTING H.M.A. BASE COURSE, ±7"
- ② EXISTING P.C.C. BASE COURSE, ±7"
- ②A EXISTING P.C.C. BASE COURSE, ±9.5"
- ③ EXISTING COMB. CONCRETE CURB & GUTTER
- ④ EXISTING H.M.A. SHOULDER
- ⑤ EXISTING AGGREGATE SHOULDER
- ⑥ EXISTING CONCRETE MEDIAN SURFACE, 4"
- ⑥A PROPOSED H.M.A SURFACE REMOVAL, 2.25"
- ⑦ EXISTING COMPACTED EARTH
- ⑧ PROPOSED PAVEMENT REMOVAL
- ⑨ PROPOSED COMB. CONCRETE CURB & GUTTER REMOVAL
- ⑩ PROPOSED CONCRETE MEDIAN SURFACE REMOVAL
- ⑪ PROPOSED H.M.A. SURFACE COURSE MIX "D", N70, 1.5"
- ⑫ PROPOSED POLYMERIZED LEV. BINDER (MM), IL-4.75, N50, 0.75"
- ⑫A PROPOSED POLYMERIZED LEV. BINDER (MM), IL-4.75, N50, 1"
- ⑬ PROPOSED CONCRETE MEDIAN, SURFACE, 4"
- ⑭ PROPOSED AGG. WEDGE SHOULDER, TYPE B
- ⑮ PROPOSED SHAPING AND GRADING SHOULDERS
- ⑯ PROPOSED COMB. CONC. B.6-12 CURB & GUTTER
- ⑰ PROPOSED PCC BASE COURSE, 9.75"
- ⑱ PROPOSED DRILL & GROUT #8, EPOXY COATED, 24" LONG C-C, TIE BAR, COST INCLUDED IN PCC BASE COURSE 9.74"
- ⑲ PROPOSED SUB-BASE GRANULAR MATERIAL, TYPE B, 4"
- ⑳ PROPOSED DRILL & GROUT #6 EPOXY COATED, 24" C-C, TIE BAR, COST INCLUDED IN COMB. CONC. B.6-12 C&G

*** NOTES:**

1. SEE ROADWAY AND PAVEMENT MARKING PLAN SHEETS FOR LOCATIONS OF LEFT TURN LANES, RIGHT TURN LANES, PAINTED MEDIAN, CONCRETE MEDIAN, CURB & GUTTER AND AGGREGATE AND HMA SHOULDER.
2. PAVEMENT PATCHING SHALL BE DONE FOLLOWING ROADWAY MILLING.

Added 5-26-10

FILE NAME =	USER NAME = smthkl	DESIGNED J M ROSIERE	REVISED -	STATE OF ILLINOIS DEPARTMENT OF TRANSPORTATION	US 30 (KRAKAR AVE. TO I-80) EXISTING AND PROPOSED TYPICAL SECTIONS	F.A.P. RTE. 607	SECTION 13 RS-6	COUNTY WILL	TOTAL SHEETS 28	SHEET NO. 6A	
c:\pwork\pwork\smthkl\d0167342\0111718-shd-plan.dgn		DRAWN J M ROSIERE	REVISED -		SCALE: NOT TO SCALE	SHEET NO. 3 OF 3 SHEETS	STA.	TO STA.	CONTRACT NO. 60167		
		CHECKED -	REVISED -		FED. ROAD DIST. NO. 1 ILLINOIS FED. AID PROJECT						
		DATE -	REVISED -								

