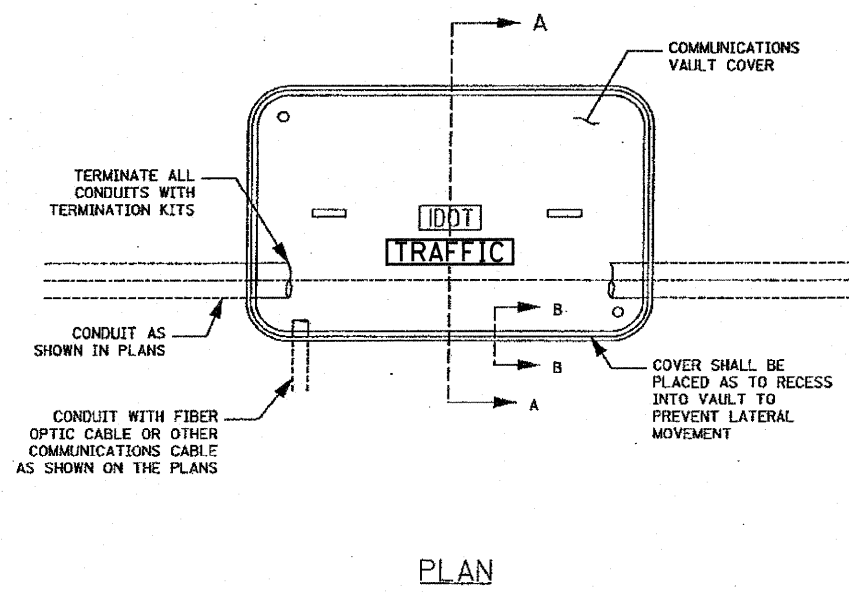
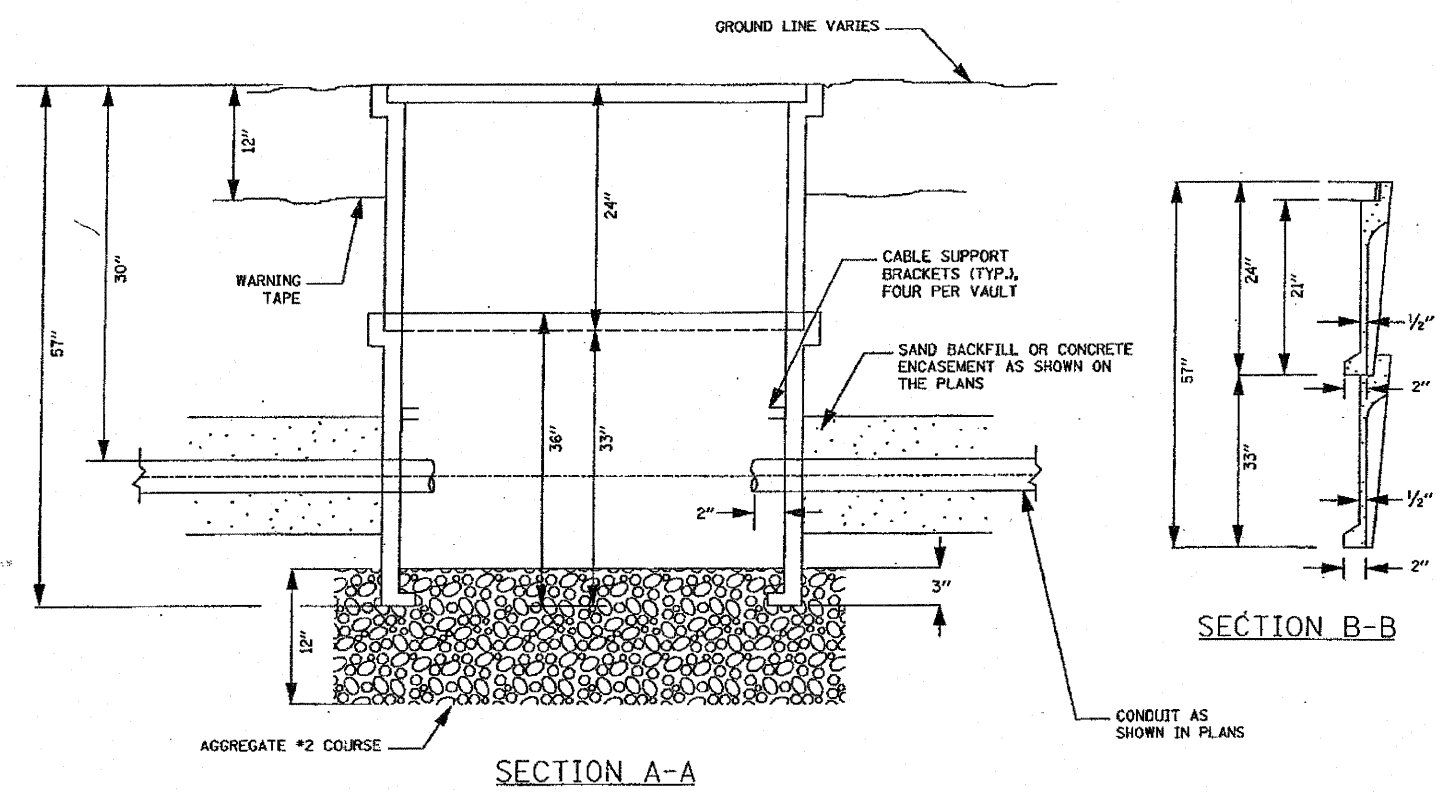


ISOMETRIC



- NOTES:
1. BOX SHALL HAVE AN OPEN BASE.
  2. COVER SHALL WITHSTAND AASHTO H 20 LOADING AND SHALL LOCK.
  3. ALL OPENINGS IN STRUCTURE MUST BE MACHINED AT TIME OF FABRICATION OR PUNCH DRIVEN AT TIME OF PLACEMENT.
  4. FIELD PLACEMENT OF COMMUNICATIONS VAULT SHALL BE AS DIRECTED BY THE ENGINEER.

FILE NAME =	USER NAME = wingram	DESIGNED -	REVISED -	<b>STATE OF ILLINOIS DEPARTMENT OF TRANSPORTATION</b>	<b>FIBER OPTIC CABLE INSTALLATION - I-55 (LORENZO ROAD TO I-80) COMMUNICATIONS VAULT DETAILS</b>	F.A. RTE.	SECTION	COUNTY	TOTAL SHEETS	SHEET NO.
P:\NP-07-1600-12\Clent\TSC Plans\Communications Vault Details.dgn		DRAWN -	REVISED -			55	2009-112 I	WILL	56	50
PLOT SCALE = #SCALE#		CHECKED -	REVISED -			CONTRACT NO. 60J24				
PLOT DATE = 3/18/2010		DATE -	REVISED -			FED. ROAD DIST. NO. [ILLINOIS] FED. AID PROJECT				
					SCALE: 1" = 50'		SHEET NO. OF SHEETS STA. TO STA.			