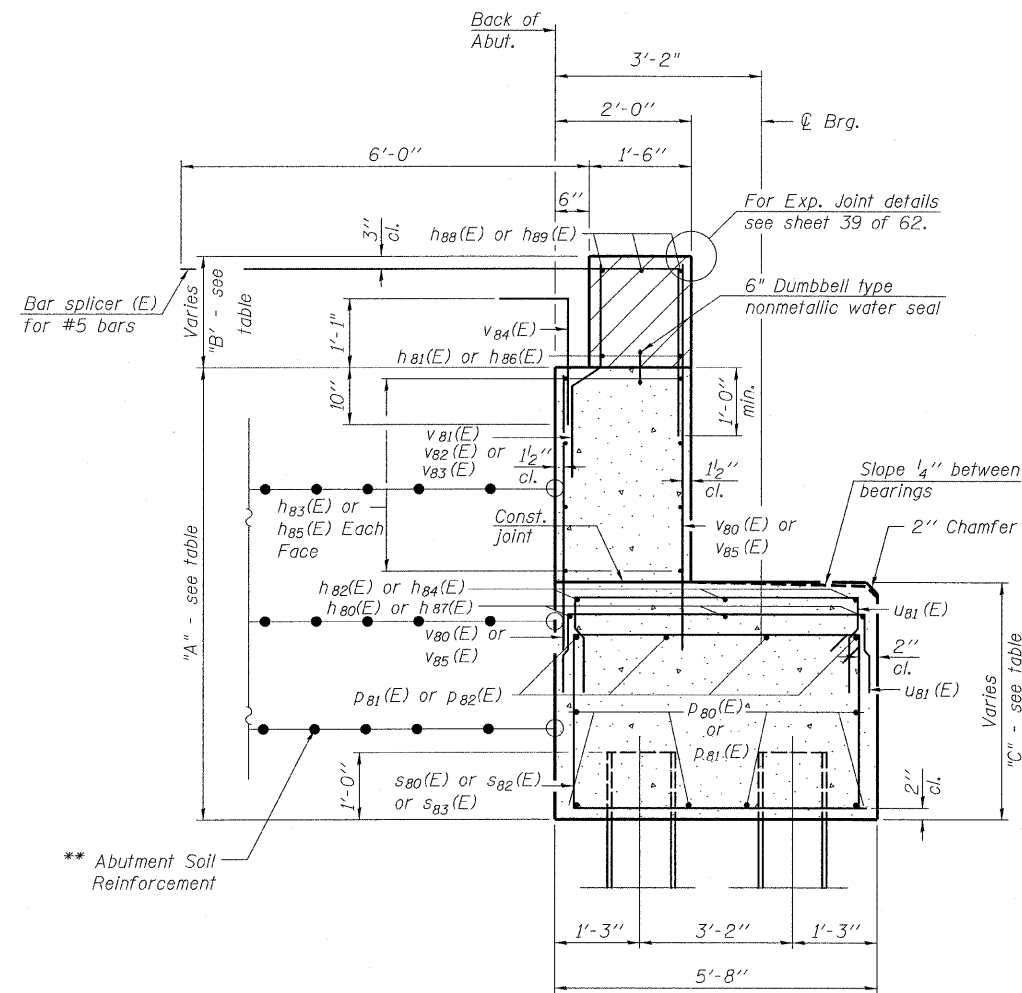


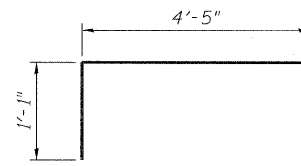
STATE OF ILLINOIS  
DEPARTMENT OF TRANSPORTATION



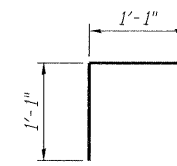
**SEC. THRU ABUT.**

\*\* The M.S.E. wall supplier shall design the abutment soil reinforcement to resist a horizontal force of 2 kips/ft. Contractor shall coordinate abutment construction with construction of MSE retaining wall.

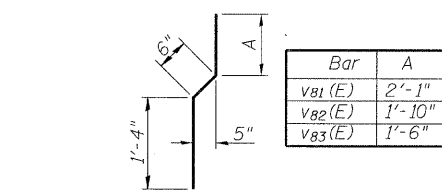
Location	A	B	C
C-D Road A	6'-7 $\frac{1}{2}$ "	1'-4" to 1'-8 $\frac{1}{2}$ "	4'-0 $\frac{3}{4}$ " to 4'-4 $\frac{1}{8}$ "
NB I-57	6'-2 $\frac{3}{8}$ "	1'-4" to 2'-0 $\frac{3}{4}$ "	3'-7 $\frac{5}{8}$ " to 4'-3 $\frac{1}{2}$ "
SB I-57	6'-0 $\frac{5}{8}$ "	1'-4" to 2'-2 $\frac{7}{8}$ "	3'-6" to 4'-3 $\frac{7}{8}$ "



**BAR b<sub>103</sub>(E)**



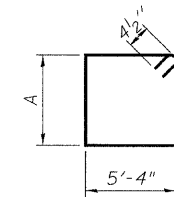
**BAR v<sub>84</sub>(E)**



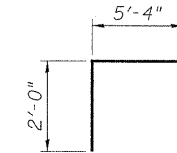
**BAR v<sub>81</sub>(E), v<sub>82</sub>(E) & v<sub>83</sub>(E)**

Bar	A
s <sub>80</sub> (E)	3'-2"
s <sub>82</sub> (E)	3'-5"
s <sub>83</sub> (E)	3'-9"

**BARS s<sub>80</sub>(E), s<sub>82</sub>(E) & s<sub>83</sub>(E)**



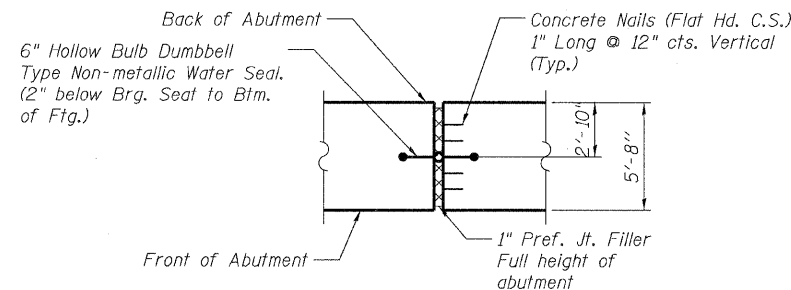
**BAR U<sub>80</sub>(E)**



**BARS U<sub>81</sub>(E)**

**PILE DATA**

Type: HP12x53 with Pile Shoes  
Nominal Required Bearing: 119 kips  
Factored Resistance Available: 230 kips  
Est. Length: 33 ft  
No. Production Piles: 51  
No. Test Piles: 1



**SEC. THRU 1" EXP. JT. FILLER**

Cost of Water Seal included in the cost of Concrete Structures.

**EAST ABUTMENT  
BILL OF MATERIAL**

Bar	No.	Size	Length	Shape
b <sub>103</sub> (E)	8	#6	6'-4"	┌
h <sub>80</sub> (E)	6	#5	29'-9"	—
h <sub>81</sub> (E)	8	#6	39'-9"	—
h <sub>82</sub> (E)	6	#5	18'-6"	—
h <sub>83</sub> (E)	32	#5	39'-10"	—
h <sub>84</sub> (E)	3	#5	18'-2"	—
h <sub>85</sub> (E)	16	#5	22'-9"	—
h <sub>86</sub> (E)	4	#6	22'-8"	—
h <sub>87</sub> (E)	3	#5	43'-7"	—
h <sub>88</sub> (E)	6	#6	23'-9"	—
h <sub>89</sub> (E)	12	#6	40'-1"	—
p <sub>80</sub> (E)	24	#7	40'-6"	—
p <sub>81</sub> (E)	10	#7	42'-3"	—
p <sub>82</sub> (E)	16	#7	40'-10"	—
s <sub>80</sub> (E)	132	#4	17'-9"	□
s <sub>82</sub> (E)	132	#4	18'-3"	□
s <sub>83</sub> (E)	72	#4	18'-11"	□
u <sub>80</sub> (E)	24	#6	8'-5"	U
u <sub>81</sub> (E)	158	#4	7'-4"	U
v <sub>80</sub> (E)	154	#5	5'-9"	—
v <sub>81</sub> (E)	77	#4	3'-11"	—
v <sub>82</sub> (E)	77	#4	3'-8"	—
v <sub>83</sub> (E)	44	#4	3'-4"	—
v <sub>84</sub> (E)	198	#5	3'-10"	┌
v <sub>85</sub> (E)	242	#5	5'-11"	—
Structure Excavation		Cu. Yd.	4,010	
Concrete Structures		Cu. Yd.	203.4	
Reinforcement Bars, Epoxy Coated		Pound	16,880	
Furnishing Steel Piles, HP12x53		Foot	1,734	
Pile Shoes		Each	52	
Driving Piles		Foot	1,734	
Test Pile, HP12x53		Each	1	
Concrete Sealer		Sq. Ft.	1,610	

For details of Bar Splicers, see sheet 55 of 62.  
For details of piles, see sheet 56 of 62.

**EAST ABUTMENT DETAILS  
S.N. 016-1252**

<b>TYLIN INTERNATIONAL</b>	DESIGNED - DY	REVISIONS		SHEET NO. 50	F.A.I. RTE.	SECTION	COUNTY	TOTAL SHEETS	SHEET NO.					
	CHECKED - AD,LS	NAME	DATE							57	1414.2B	COOK	516	363
	DRAWN - DY,EI									62 SHEETS				
	CHECKED - LS,SP,PDF													
	DATE - 03/18/10	REVISOR	DATE											

FED. ROAD DIST. NO. 1 ILLINOIS FED. AID PROJECT

P:\602540157-294\STRUCTURAL\1-57-OVER-RAMP-BN\Final.submittal\_03-17-2010\Final.submittal\_03172010\0161252-60J27-050-E-ABUT-DT-1.dgn 2:33:58 PM 5/21/2010