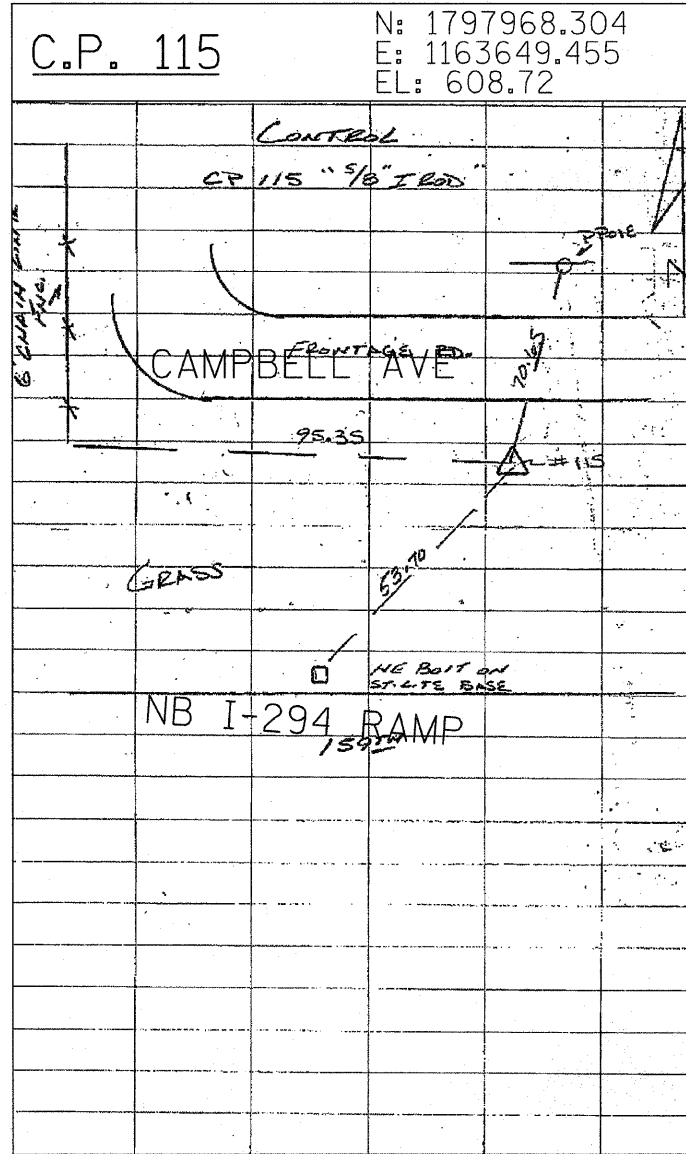


SET 5/8" IRON ROD 4.50' EAST OF EASTERLY EDGE OF PAVEMENT ± 160' NORTH OF  $\phi$  155TH ST.



5/8" IRON ROD ON SOUTH SIDE OF CAMPBELL AVENUE NORTH OF THE INTERSECTION OF 159TH STREET AND THE NORTHBOUND I-294 RAMP.

TYLIN INTERNATIONAL	USER NAME =	DESIGNED - CAC	REVISED -
	PLOT SCALE =	DRAWN - CAC	REVISED -
	PLOT DATE =	CHECKED - JDF	REVISED -
		DATE - 3/18/2010	REVISED -

**STATE OF ILLINOIS  
DEPARTMENT OF TRANSPORTATION**

I-57 AT I-294 INTERCHANGE PROJECT			
SURVEY TIES FOR CONTROL POINTS			
SCALE: N.T.S.	SHEET NO. 10 OF 10 SHEETS	STA. 425+00	TO STA. 3118+34.77

F.A.I. RTE.	SECTION	COUNTY	TOTAL SHEETS	SHEET NO.
57	1414.2B	COOK	516	18C
FED. ROAD DIST. NO. ILLINOIS FED. AID PROJECT			CONTRACT NO. 60J27	