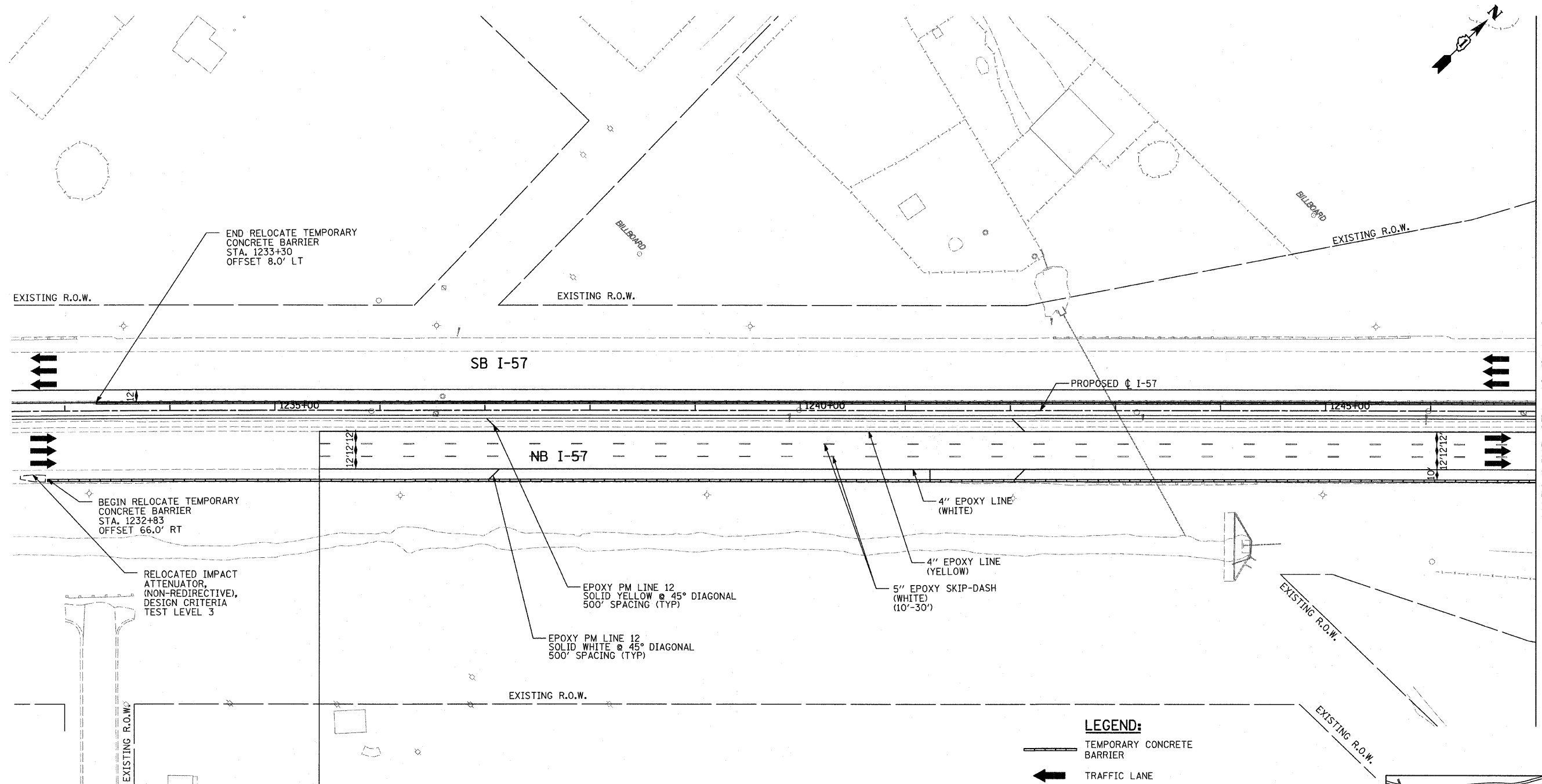


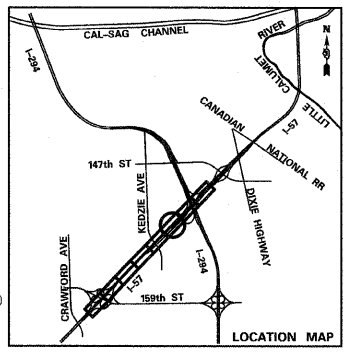
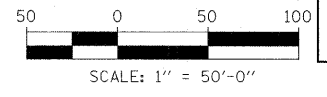
P:\602540(57-294)\road\mot\mot_project\N1_MOT_W2_SHT06.dgn 9:41:59 AM 3/23/2010



PERMANENT PAVEMENT MARKINGS
 INSTALLED ON I-57 AFTER STAGE 2
 BETWEEN STA. 1168+75 AND STA. 1235+42
 SEE PROPOSED PAVEMENT MARKING SHEETS

NOTES:
 PERMANENT PAVEMENT MARKINGS TO BE INSTALLED AFTER STAGE 2 BEFORE THE WINTER SHUTDOWN II STAGE BETWEEN STA. 1168+75 AND STA. 1235+42 ON NB I-57 AND BETWEEN STA. 1169+19 AND STA. 1247+45 ON SB I-57. SEE PROPOSED PAVEMENT MARKING SHEETS.

- LEGEND:**
- TEMPORARY CONCRETE BARRIER
 - TRAFFIC LANE
 - WORK ZONE
 - TEMPORARY PAVEMENT (INTERSTATE)
 - BARRICADE, TYPE III
 - DRUM WITH MONO-DIRECTIONAL STEADY BURNING LIGHT
 - ARROW BOARD



TYLIN INTERNATIONAL	USER NAME =	DESIGNED - DM	REVISED -	STATE OF ILLINOIS DEPARTMENT OF TRANSPORTATION	I-57 AT I-294 INTERCHANGE PROJECT MAINTENANCE OF TRAFFIC - I-57 WINTER STAGE II			F.A.I. RTE. =	SECTION	COUNTY	TOTAL SHEETS	SHEET NO.
	PLOT SCALE =	DRAWN - DM	REVISED -		57	1414.2B	COOK	516	111			
	PLOT DATE =	CHECKED - JPM	REVISED -		CONTRACT NO. 60J27							
		DATE - 3/18/2010	REVISED -		FED. ROAD DIST. NO. ILLINOIS FED. AID PROJECT							
				SCALE: 1"=50'	SHEET NO. 1 OF 4 SHEETS	STA. 1232+50 TO STA. 1247+00						