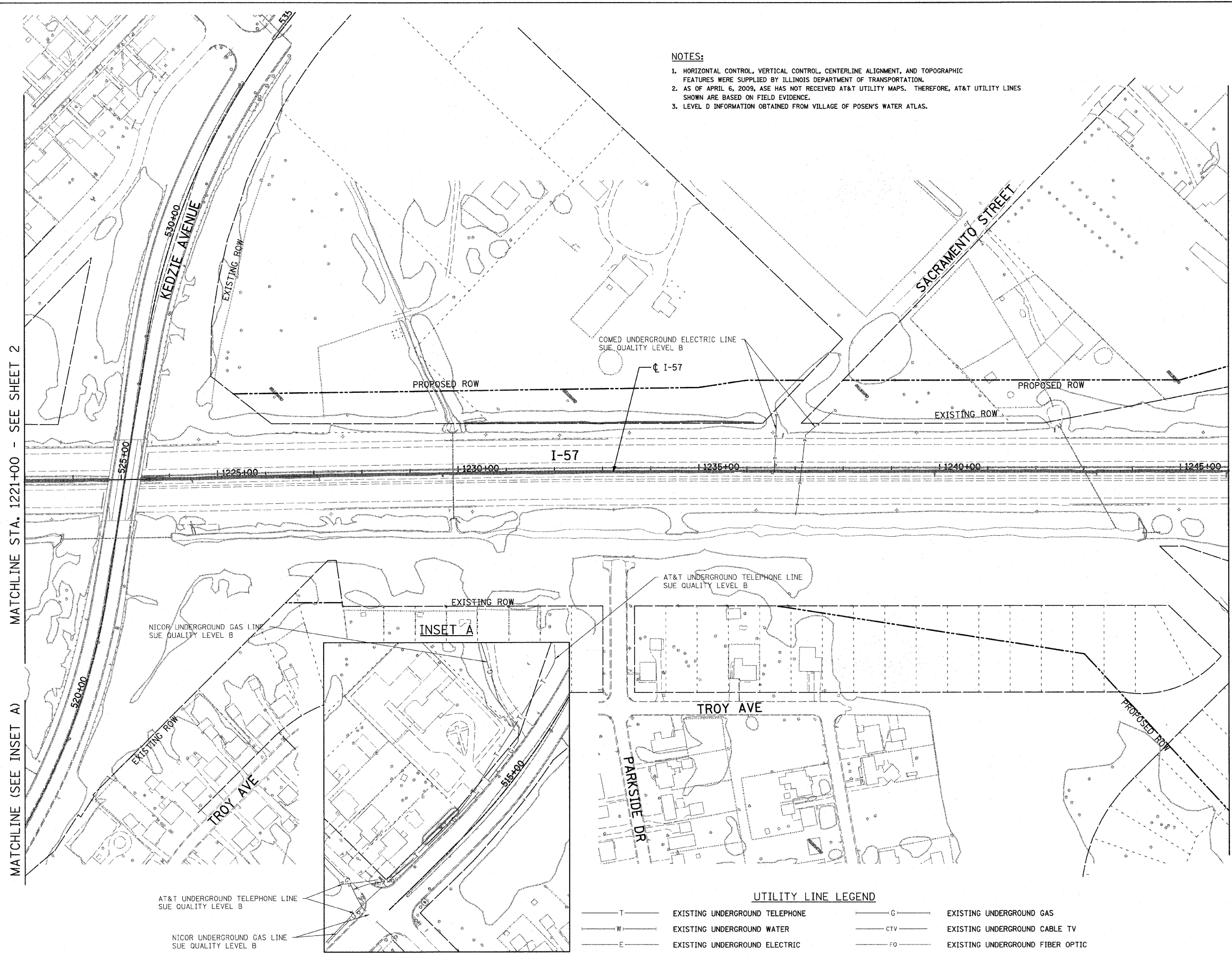
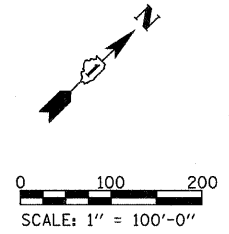


- NOTES:**
- HORIZONTAL CONTROL, VERTICAL CONTROL, CENTERLINE ALIGNMENT, AND TOPOGRAPHIC FEATURES WERE SUPPLIED BY ILLINOIS DEPARTMENT OF TRANSPORTATION.
 - AS OF APRIL 6, 2009, ASE HAS NOT RECEIVED AT&T UTILITY MAPS. THEREFORE, AT&T UTILITY LINES SHOWN ARE BASED ON FIELD EVIDENCE.
 - LEVEL D INFORMATION OBTAINED FROM VILLAGE OF POSEY'S WATER ATLAS.



MATCHLINE STA. 1221+00 - SEE SHEET 2

MATCHLINE (SEE INSET A)

MATCHLINE STA. 1246+00 - SEE SHEET 4

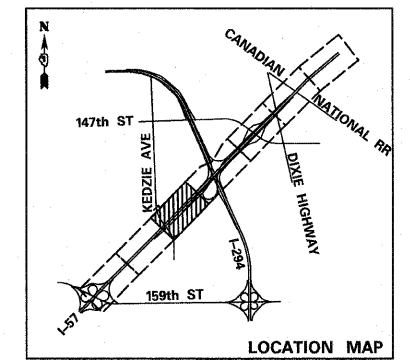
STATE OF ILLINOIS)
COUNTY OF COOK) S.S.

UTILITY(IES) SHOWN HEREON HAVE BEEN INVESTIGATED BY ASE IN ACCORDANCE WITH SUE INDUSTRY STANDARDS QUALITY LEVEL B (QLB). ALL OTHER INFORMATION SHOWN HAS BEEN PROVIDED BY OTHERS.

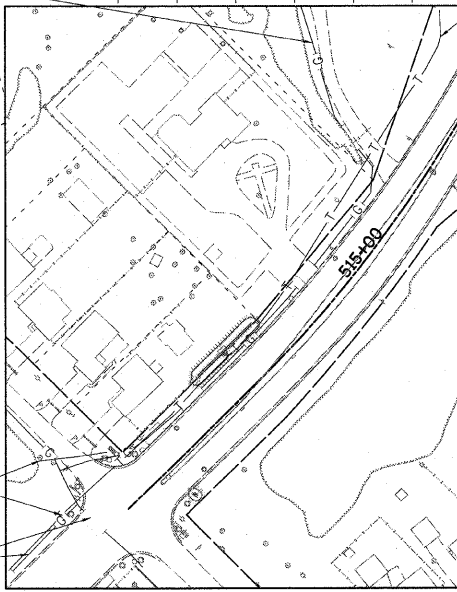
FIELD WORK WAS PERFORMED BETWEEN THE 29TH OF JANUARY AND 6TH DAY OF APRIL, A.D., 2009.

IN WITNESS WHEREOF, I HAVE HERELUNTO SET MY HAND AND SEAL THIS 9TH DAY OF APRIL A.D., 2009. CHICAGO, IL.

STEVEN M. RIENKS - ILLINOIS PROFESSIONAL ENGINEER NUMBER 62-044619
MY LICENSE EXPIRES 11/30/2009



INSET A



UTILITY LINE LEGEND

— T —	EXISTING UNDERGROUND TELEPHONE	— G —	EXISTING UNDERGROUND GAS
— W —	EXISTING UNDERGROUND WATER	— CTV —	EXISTING UNDERGROUND CABLE TV
— E —	EXISTING UNDERGROUND ELECTRIC	— FO —	EXISTING UNDERGROUND FIBER OPTIC



USER NAME =	DESIGNED -	REVISED -
PLOT SCALE =	DRAWN -	REVISED -
PLOT DATE =	CHECKED -	REVISED -
	DATE - 3/18/2010	REVISED -

**STATE OF ILLINOIS
DEPARTMENT OF TRANSPORTATION**

**I-57 AT I-294 INTERCHANGE PROJECT
SUBSURFACE UTILITY LOCATIONS**

SCALE: SHEET NO. 3 OF 10 SHEETS STA. 1221+00 TO STA. 1246+00

F.A.T. RTE.	SECTION	COUNTY	TOTAL SHEETS	SHEET NO.
57	1414.2B	COOK	516	164
CONTRACT NO. 60J27				
FED. ROAD DIST. NO. ILLINOIS FED. AID PROJECT				