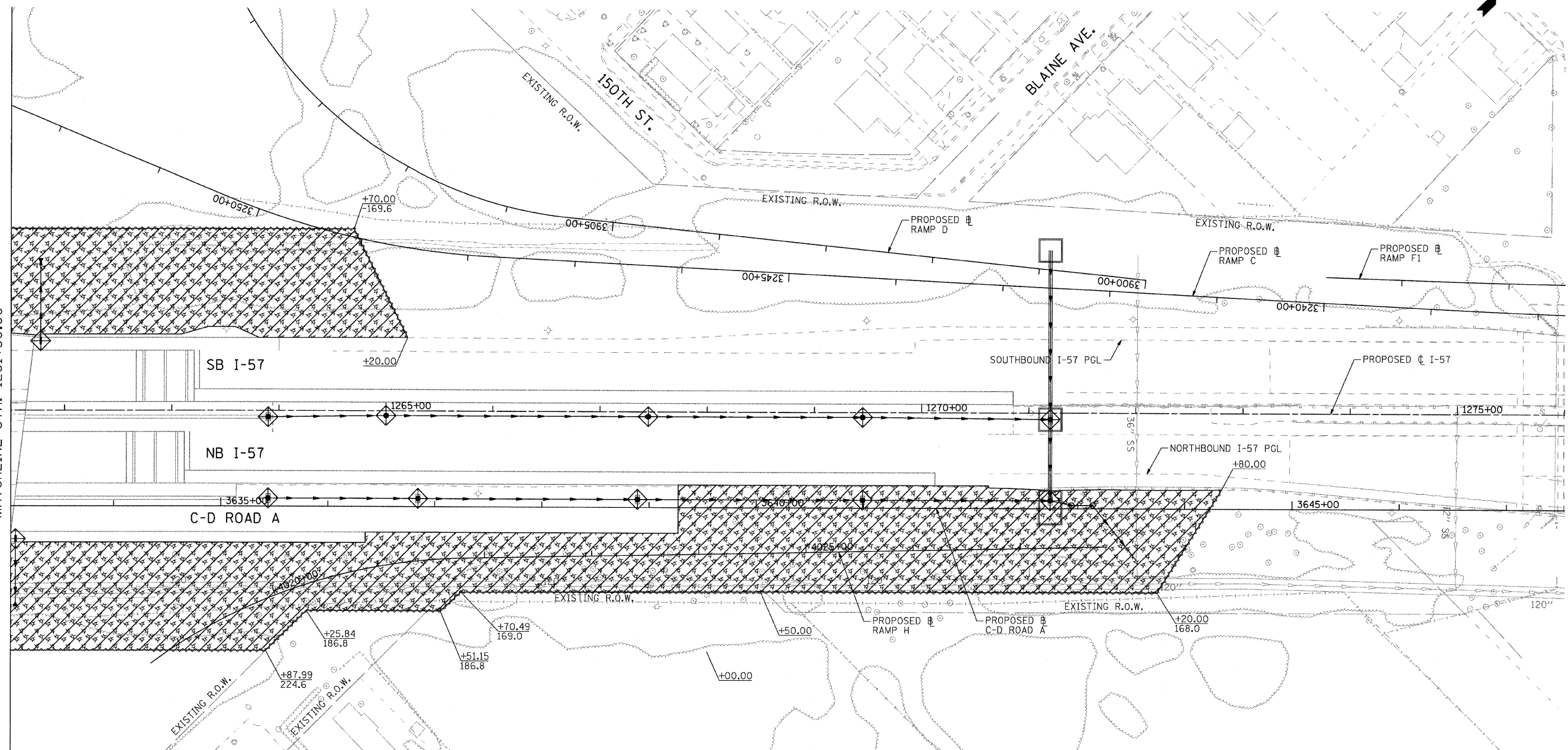
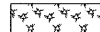
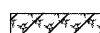

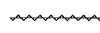

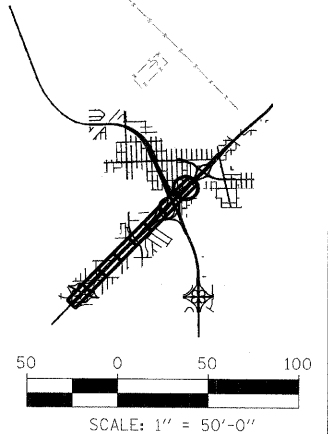


MATCHLINE STA. 1261+50.00



LEGEND:

-  MULCH, METHOD 2 AND TEMPORARY EROSION CONTROL SEEDING
-  MULCH, METHOD 3 AND TEMPORARY EROSION CONTROL SEEDING (IF SEEDED AFTER SEPT. 16, EROSION CONTROL BLANKET REQUIRED)
-  INLET FILTERS (UNLESS OTHERWISE NOTED)
-  PERIMETER EROSION BARRIER
-  TEMPORARY DITCH CHECKS



COMPANY NAME: SEC GROUP, INC.
 PROJECT CONTACT: T. HAMILTON
 CLIENT: ILLINOIS DEPARTMENT OF TRANSPORTATION
 DATE PLOTTED: 4/23/2010 12:36 PM
 FILE NAME: PLEC.SHT08.dgn
 PLOT DRIVER: pdr10t
 REV TABLE: standard-truss.tbl

SEC Group, Inc.
 An HR Green Company
 481 N. First Street
 Naperville, IL 60563-2138
 1.630.583.1772 • 630.585.1781
 www.secgroupinc.com
 *Arlington, IL • Yorkville, IL • New Lenox, IL • Chicago, IL

USER NAME = JAttano	DESIGNED - J. ATTANASEO	REVISED - 4/29/2010
FILE NAME = PLEC.SHT08.dgn	DRAWN - J. ATTANASEO	REVISED -
PLOT SCALE = 1:50.0001	CHECKED - T. HAMILTON	REVISED -
PLOT DATE = 4/23/2010	DATE - 4/23/10	REVISED -

**STATE OF ILLINOIS
DEPARTMENT OF TRANSPORTATION**

**I-294 AT I-57 INTERCHANGE PROJECT
EROSION CONTROL PLAN - I-57**

SCALE: 1"=50' SHEET NO. 8 OF 9 SHEETS STA. 1261+50.00 TO STA. 1276+00.00

F.A.I. RTE.	SECTION	COUNTY	TOTAL SHEETS	SHEET NO.
57	1414.2B	COOK	516	188
CONTRACT NO. 60J27				
FED. ROAD DIST. NO. ILLINOIS FED. AID PROJECT				