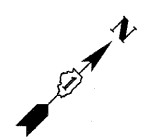
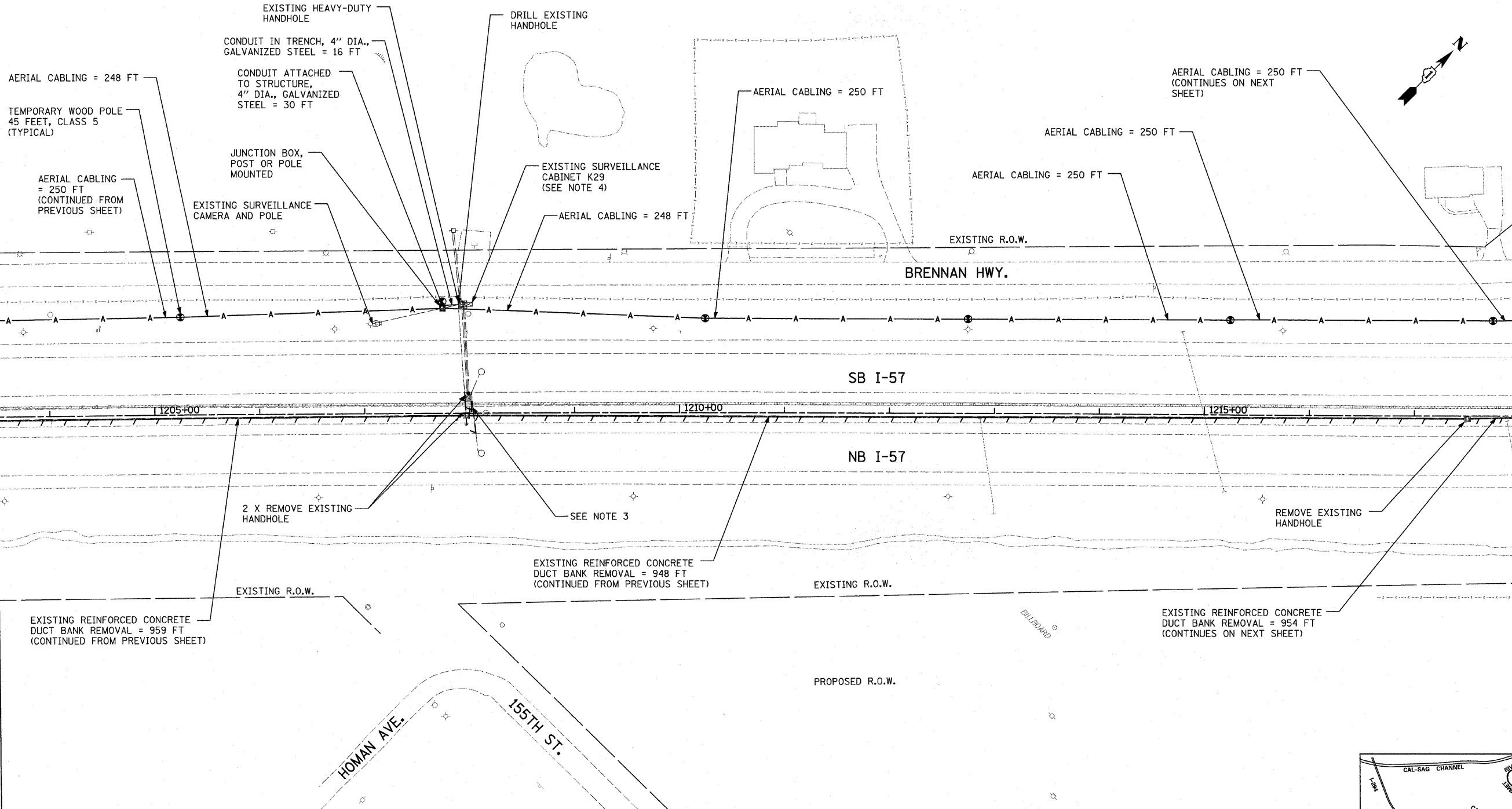


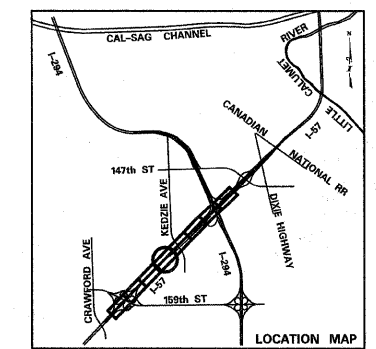
MATCHLINE STA. 1203+50.00

MATCHLINE STA. 1218+00.00



**NOTES:**

1. SEE WIRING DIAGRAM SHEETS FOR CABLING DETAILS AT SURVEILLANCE CABINET K29
2. SEE WIRING DIAGRAM SHEETS FOR AERIAL CABLING DETAILS ON TEMPORARY WOOD POLES.
3. REMOVAL OF EXISTING CONDUIT SHALL BE INCLUDED IN THE COST OF THE ASSOCIATED REPLACEMENT ITEMS - SEE PROPOSED TRAFFIC SURVEILLANCE PLAN SHEETS.
4. SEE TEMPORARY TRAFFIC SURVEILLANCE DETAILS FOR CONDUIT INFORMATION AT SURVEILLANCE CABINETS.



<b>TYLIN INTERNATIONAL</b> USER NAME = PLOT SCALE = PLOT DATE =	DESIGNED - JDF DRAWN - CAC CHECKED - DAJ DATE - 3/18/2010	REVISED - REVISED - REVISED - REVISED -	<b>STATE OF ILLINOIS          DEPARTMENT OF TRANSPORTATION</b>		<b>I-57 AT I-294 INTERCHANGE PROJECT          PROPOSED TEMPORARY TRAFFIC SURVEILLANCE PLAN AND REMOVALS</b>			F.A.I. RTE. 57	SECTION 1414.2B	COUNTY COOK	TOTAL SHEETS 516 SHEET NO. 220
	SCALE: 1"=50' SHEET NO. 4 OF 8 SHEETS STA. 1203+50 TO STA. 1218+00							FED. ROAD DIST. NO. ILLINOIS FED. AID PROJECT		CONTRACT NO. 60J27	
	pr:\602540(57-294)\road\elec\PI_TEMP_TCS_SHT04.dgn										
	7/18/2010 11:22:22 AM										