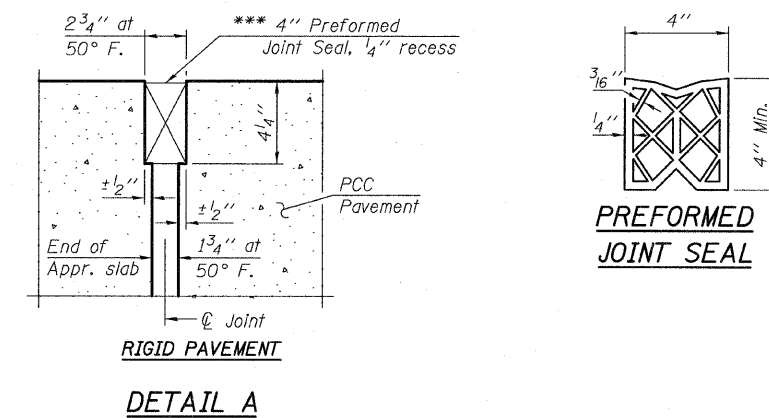


STATE OF ILLINOIS
DEPARTMENT OF TRANSPORTATION

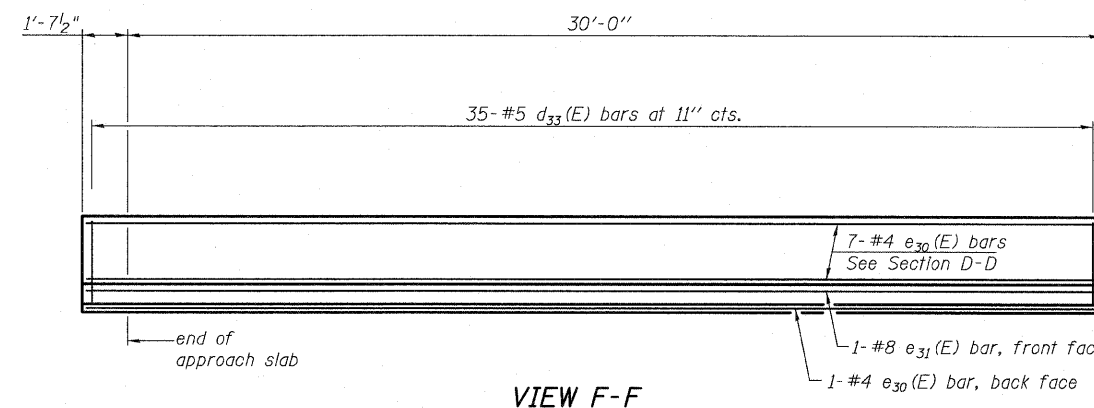
- Notes:
1. See sheet 34 of 68 for Sections C-C & D-D and View E-E.
2. $a_{33}(E)$ and $a_{34}(E)$ bar spacings measured along ϕ Rdwy.
3. Bars indicated thus 20x3-#5 etc. indicates 20 lines of bars with 3 lengths per line.

*** Cost included with Concrete Superstructure.

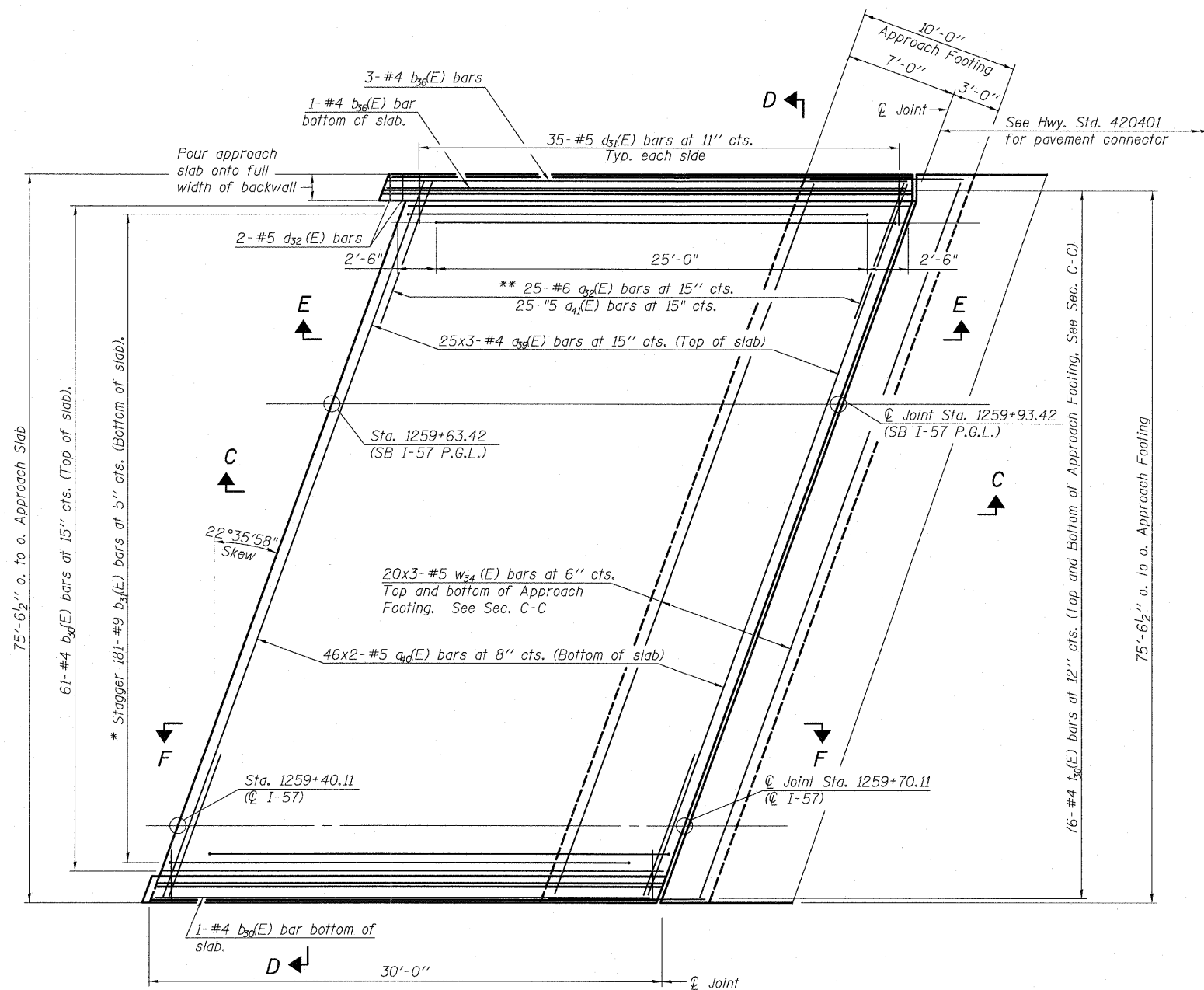


Minimum Bar Laps

- #4 Bar 2'-11"
#5 Bar 3'-3"



VIEW F-F



PLAN

- * Tilt #9 $b_{31}(E)$ bars as required to maintain clearance.
** Space between $a_{33}(E)$ bars, typ. each parapet.

| | | | | | | | | | |
|---------------------|------------------|-----------|------|---|---------------------|--------------------|----------------|------------------------|---------------------|
| TYLIN INTERNATIONAL | DESIGNED - JMA | REVISIONS | | SHEET NO. 33 | F.A.I RTE. 57 | SECTION 1414.2B | COUNTY COOK | TOTAL SHEETS 516 | SHEET NO. 278 |
| | CHECKED - SP, | NAME | DATE | | | | | | |
| | DRAWN - JMA | | | | | | | | |
| | CHECKED - SP,PDF | | | | | | | | |
| | DATE - 03/18/10 | | | | | | | | |
| | | | | 68 SHEETS | CONTRACT NO. 60J27 | | | | |
| | | | | FED. ROAD DIST. NO. 1 ILLINOIS FED. AID PROJECT | | | | | |

EAST APPROACH SLAB SB I-57 - 1
STRUCTURE NO. 016-1251

P:\602540\67-294\STRUCTURAL\I-57_OVER_1294\0161251-60J27-033-E_APPR5.dgn

3/17/2010