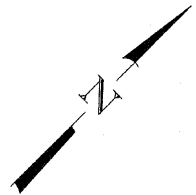
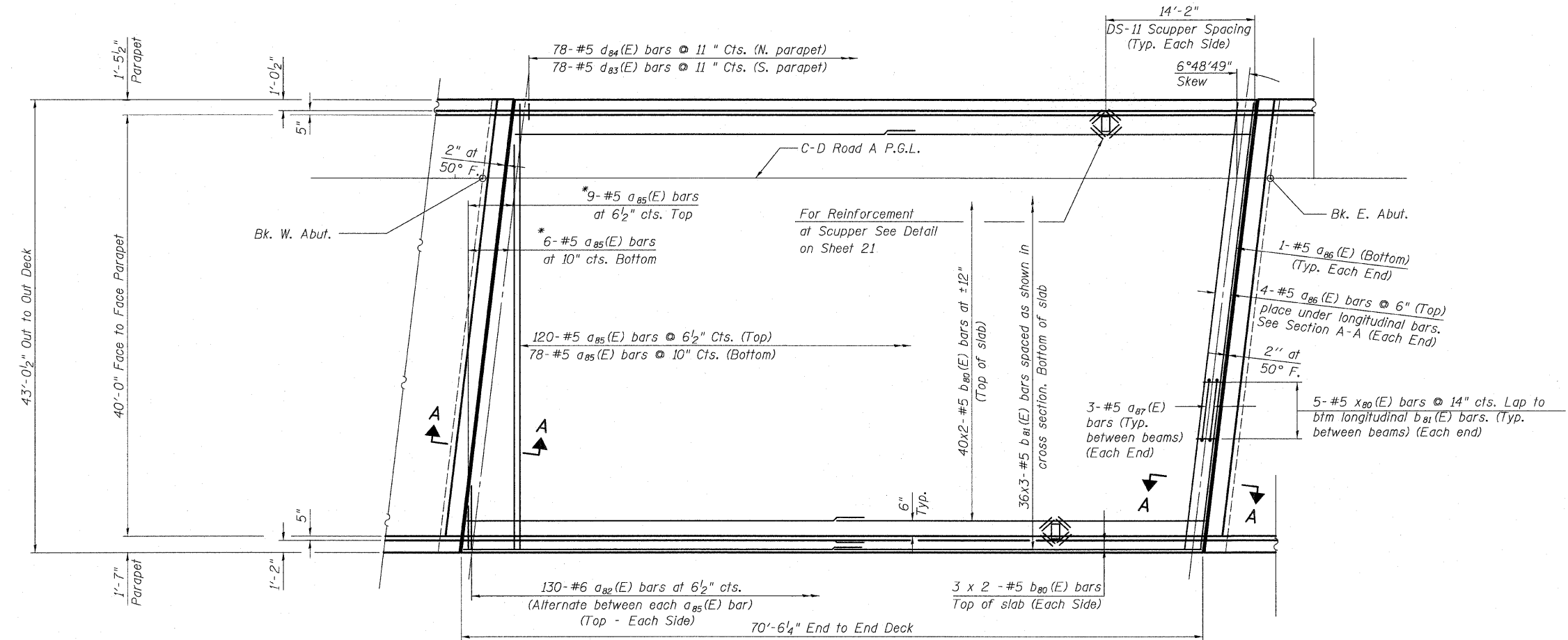


STATE OF ILLINOIS
DEPARTMENT OF TRANSPORTATION



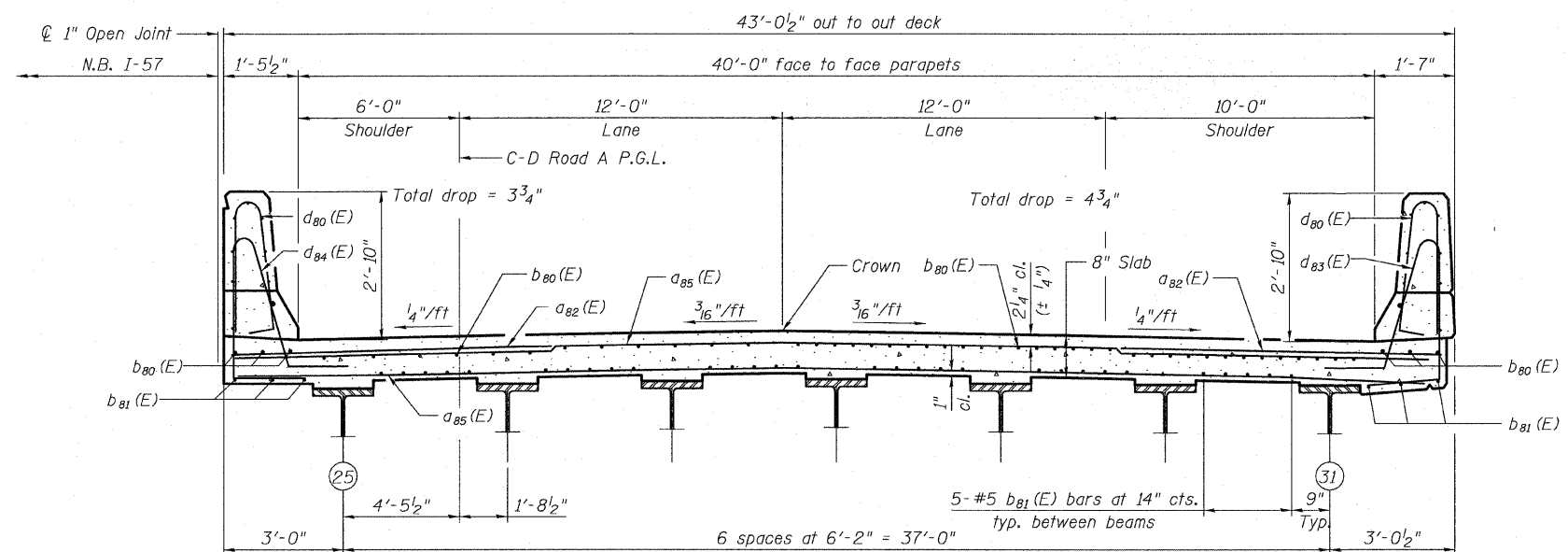
* Order $a_{85}(E)$ bars full length.
Cut to fit skew and use remainder
of bars in opposite end.



PLAN

MINIMUM BAR LAPS

Bar	Lap
#5	3'-3"
#5	3'-8" (Top)



CROSS SECTION
(Looking East)

Notes:
For notes see Sheet 17 of 62.

SUPERSTRUCTURE - C-D ROAD A
SN. 016-1252

TYLIN INTERNATIONAL	DESIGNED - DY	REVISIONS		SHEET NO. 19 62 SHEETS	F.A.I. RTE.	SECTION	COUNTY	TOTAL SHEETS	SHEET NO.	
	CHECKED - AD,LS	NAME	DATE		57	1414.2B	COOK	516	332	
	DRAWN - DY,EI				CONTRACT NO. 60J27					
	CHECKED - LS,SP,PDF				FED. ROAD DIST. NO. 1 ILLINOIS FED. AID PROJECT					
	DATE - 03/18/10									

P:\602540\57-294\STRUCTURAL\I-57 OVER RAMP BV\Final submittal_03-17-2010\Final submittal_03172010\0161252-60J27-019-SUPER_RAMP Addm 9:54:02 AM