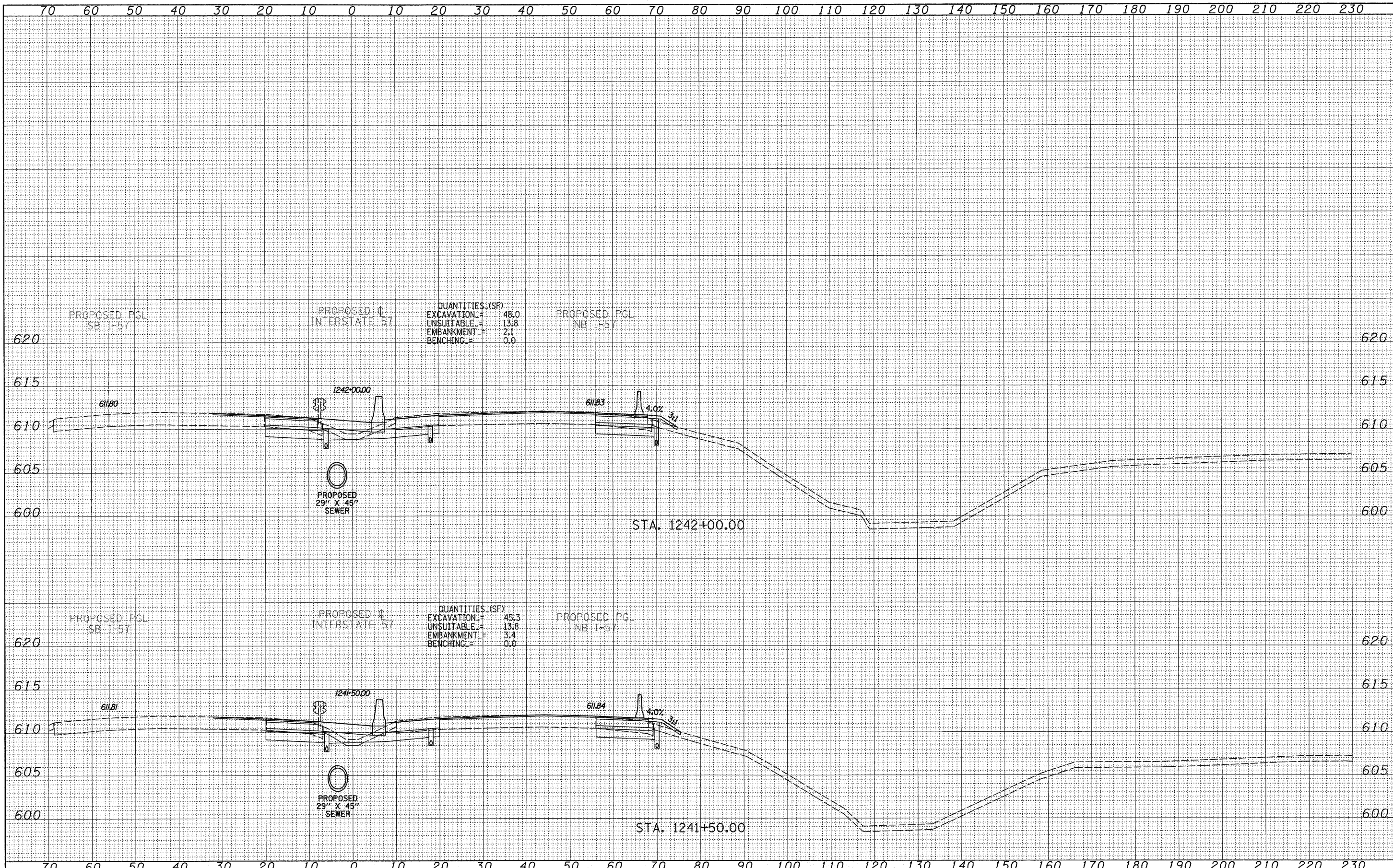


FINAL SURVEY	DATE
SURVEYED	BY
PLOTTED	
NOTE BOOK	
TEMP. LATE	
AREAS	
CHECKED	
NO.	

ORIGINAL SURVEY	DATE
SURVEYED	BY
PLOTTED	
NOTE BOOK	
TEMP. LATE	
AREAS	
CHECKED	
NO.	



QUANTITIES (SF)  
 EXCAVATION = 48.0  
 UNSUITABLE = 13.8  
 EMBANKMENT = 2.1  
 BENCHING = 0.0

QUANTITIES (SF)  
 EXCAVATION = 45.3  
 UNSUITABLE = 13.8  
 EMBANKMENT = 3.4  
 BENCHING = 0.0

TYLIN INTERNATIONAL

USER NAME =	DESIGNED - JDF	REVISED -
PLOT SCALE =	DRAWN - JDF	REVISED -
PLOT DATE =	CHECKED - JPM	REVISED -
	DATE - 3/18/2010	REVISED -

STATE OF ILLINOIS  
 DEPARTMENT OF TRANSPORTATION

I-57 AT I-294 INTERCHANGE PROJECT  
 PROPOSED I-57 CROSS SECTIONS  
 SCALE: 1" = 10' H, 1" = 50' V  
 SHEET NO. OF SHEETS STA. 1241+50.00 TO STA. 1242+00.00

F.A.I. RTE.	SECTION	COUNTY	TOTAL SHEETS	SHEET NO.
57	1414.2B	COOK	516	478
FED. ROAD DIST. NO. ILLINOIS FED. AID PROJECT			CONTRACT NO. 60J27	