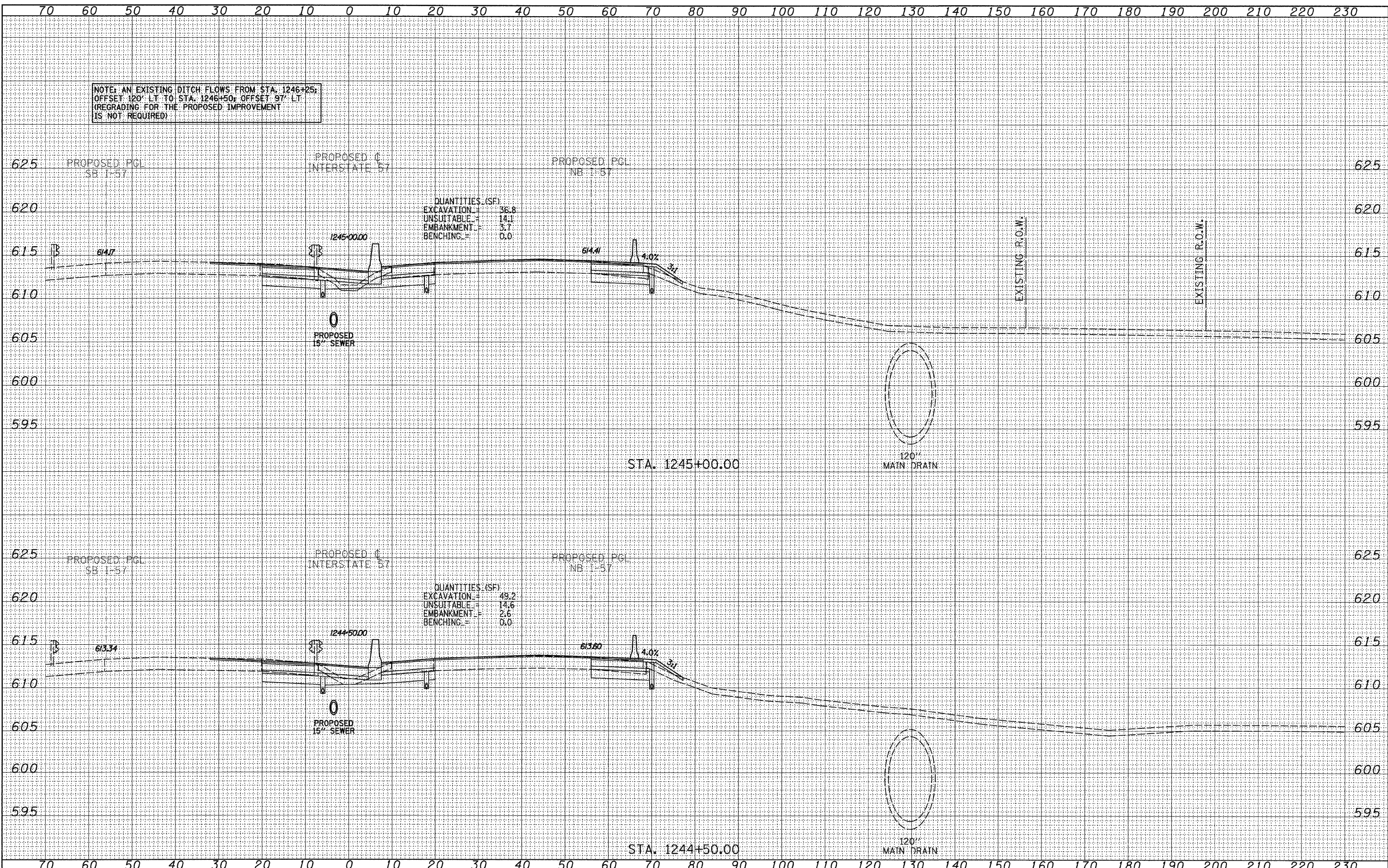


NOTE: AN EXISTING DITCH FLOWS FROM STA. 1246+25, OFFSET 120' LT TO STA. 1246+50; OFFSET 97' LT (REGRADE FOR THE PROPOSED IMPROVEMENT IS NOT REQUIRED)

DATE	
BY	
SURVEYED	
PLOTTED	
NOTE BOOK	
AREAS CHECKED	
NO.	

DATE	
BY	
SURVEYED	
PLOTTED	
NOTE BOOK	
AREAS CHECKED	
NO.	



QUANTITIES (SF)

EXCAVATION	36.8
UNSUITABLE	14.1
EMBANKMENT	3.7
BENCHING	0.0

QUANTITIES (SF)

EXCAVATION	49.2
UNSUITABLE	14.6
EMBANKMENT	2.6
BENCHING	0.0

**TYLIN INTERNATIONAL**

USER NAME =	DESIGNED - JDF	REVISED - 4/29/2010
PLLOT SCALE =	DRAWN - JDF	REVISED -
PLLOT DATE =	CHECKED - JPM	REVISED -
	DATE - 3/18/2010	REVISED -

**STATE OF ILLINOIS  
DEPARTMENT OF TRANSPORTATION**

**I-57 AT I-294 INTERCHANGE PROJECT  
PROPOSED I-57 CROSS SECTIONS**

SCALE: 1" = 10' H  
SHEET NO. OF SHEETS STA. 1244+50.00 TO STA. 1245+00.00

F.A.I. RTE.	SECTION	COUNTY	TOTAL SHEETS	SHEET NO.
57	1414.2B	COOK	516	481
CONTRACT NO. 60J27				