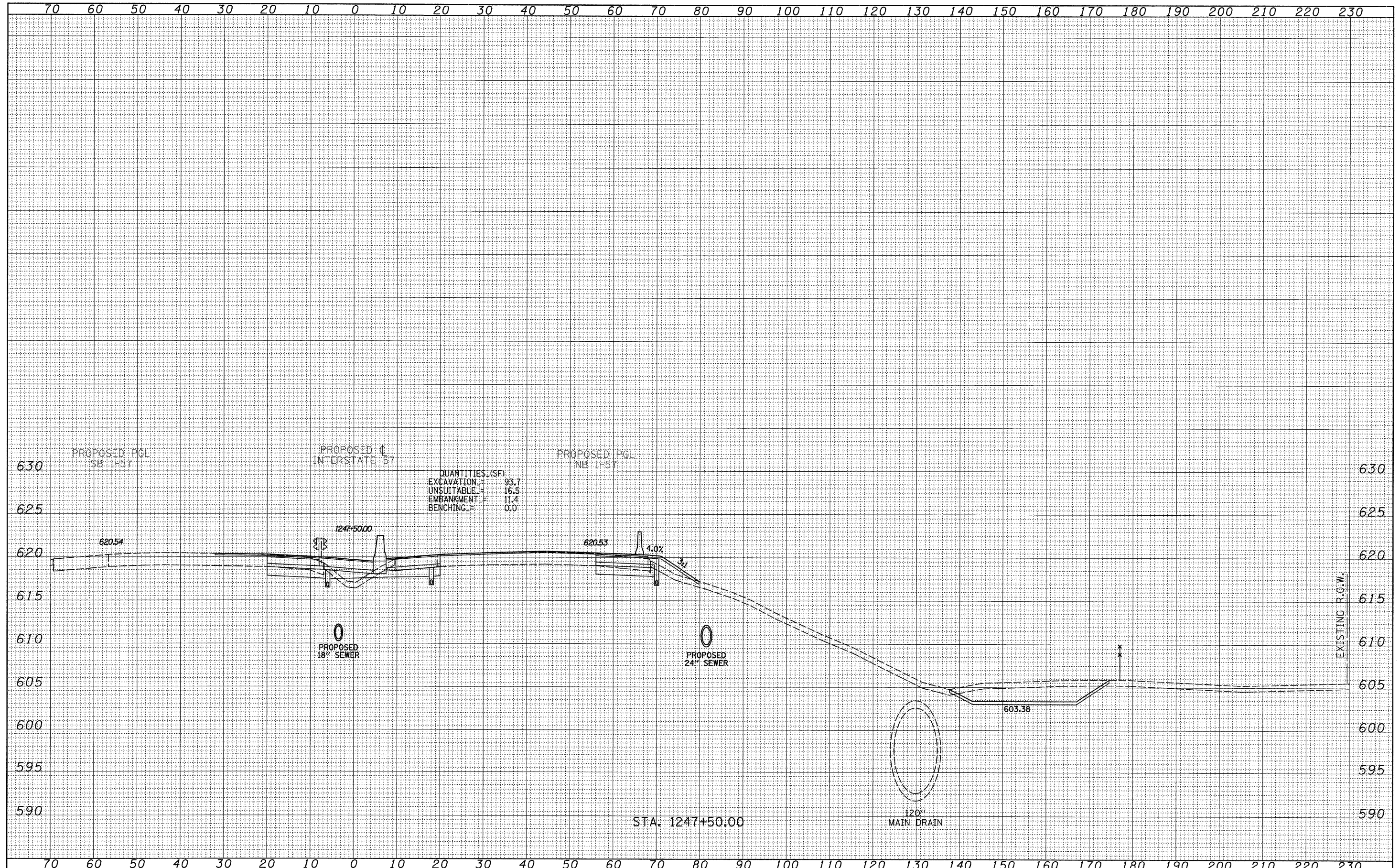


DATE	
BY	
SURVEYED	
PLOTTED	
NOTE BOOK	
AREAS CHECKED	
NO.	

DATE	
BY	
SURVEYED	
PLOTTED	
NOTE BOOK	
AREAS CHECKED	
NO.	



QUANTITIES (SF)

EXCAVATION	=	93.7
UNSUITABLE	=	16.5
EMBANKMENT	=	11.4
BENCHING	=	0.0

TYLIN INTERNATIONAL

USER NAME =	DESIGNED - JDF	REVISED - 4/29/2010
PLOT SCALE =	DRAWN - JDF	REVISED -
PLOT DATE =	CHECKED - JPM	REVISED -
	DATE - 3/18/2010	REVISED -

**STATE OF ILLINOIS
DEPARTMENT OF TRANSPORTATION**

**I-57 AT I-294 INTERCHANGE PROJECT
PROPOSED I-57 CROSS SECTIONS**

SCALE: 1" = 10' H
SHEET NO. OF SHEETS STA. 1247+50.00 TO STA. 1247+50.00

F.A.I. RTE.	SECTION	COUNTY	TOTAL SHEETS	SHEET NO.
57	1414.2B	COOK	516	486
CONTRACT NO. 60J27				

FED. ROAD DIST. NO. ILLINOIS FED. AID PROJECT

P:\602540(57-294)\Road\PI.157 BR\PI_57XS_SHT_R.dgn