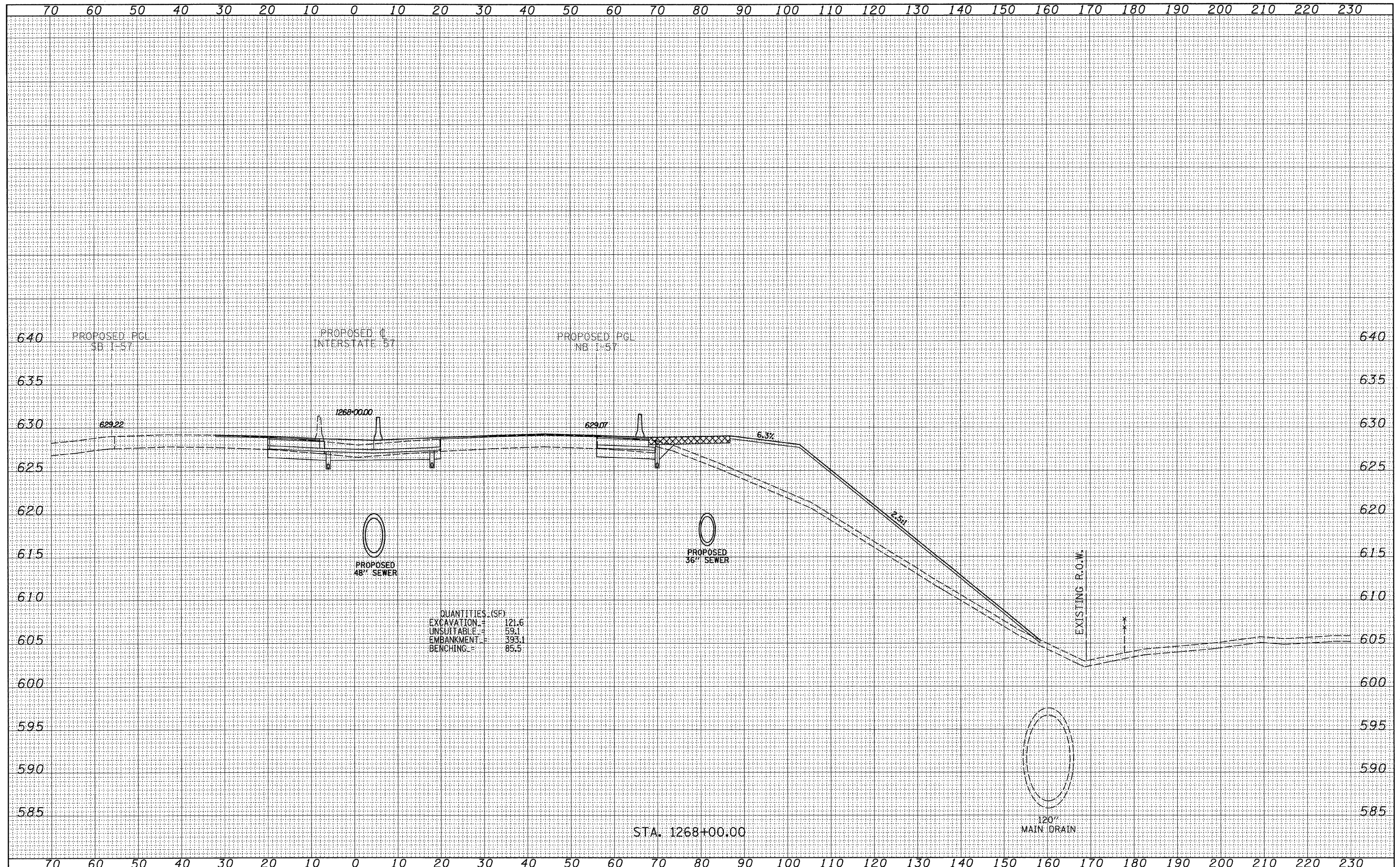


DATE	
BY	
SURVEYED	
PLOTTED	
NOTE BOOK	
AREAS CHECKED	
NO.	

DATE	
BY	
SURVEYED	
PLOTTED	
NOTE BOOK	
AREAS CHECKED	
NO.	



QUANTITIES (SF)

EXCAVATION	=	121.6
UNSUITABLE	=	59.1
EMBANKMENT	=	393.1
BENCHING	=	85.5

TYLIN INTERNATIONAL	USER NAME =	DESIGNED - JDF	REVISED - 4/29/2010	STATE OF ILLINOIS DEPARTMENT OF TRANSPORTATION	I-57 AT I-294 INTERCHANGE PROJECT PROPOSED I-57 CROSS SECTIONS		F.A.I. RTE. 57	SECTION 1414.2B	COUNTY COOK	TOTAL SHEETS 516	SHEET NO. 516A
	PLOT SCALE =	CHECKED - JPM	REVISED -		SCALE: 1" = 10' H	SHEET NO. OF SHEETS	STA. 1268+00.00 TO STA. 1268+00.00	FED. ROAD DIST. NO.	ILLINOIS FED. AID PROJECT	CONTRACT NO. 60J27	
	PLOT DATE =	DATE - 3/18/2010	REVISED -								