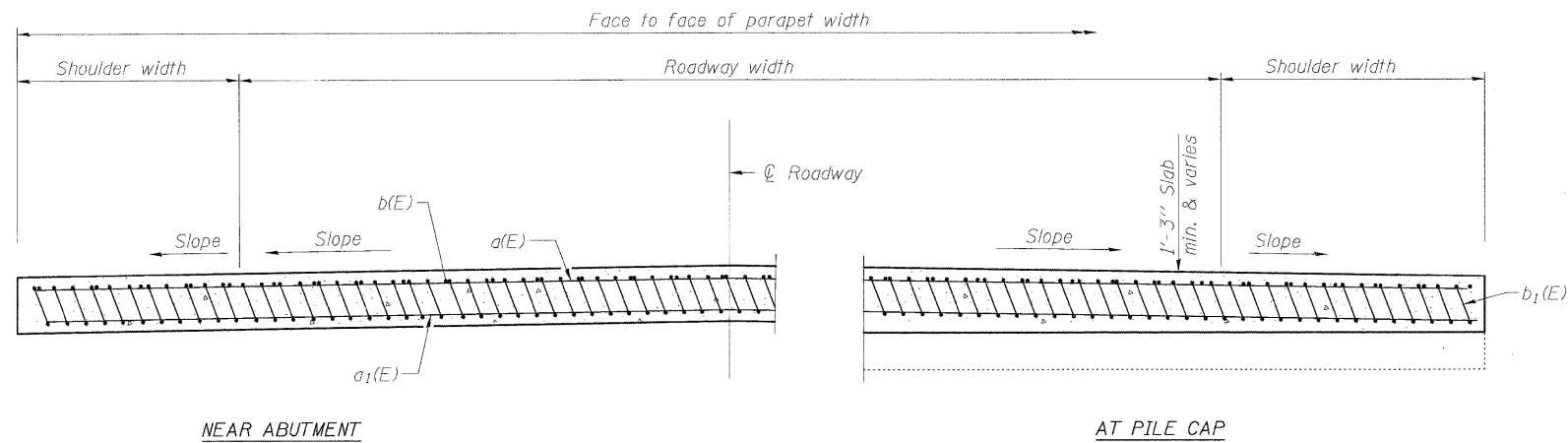
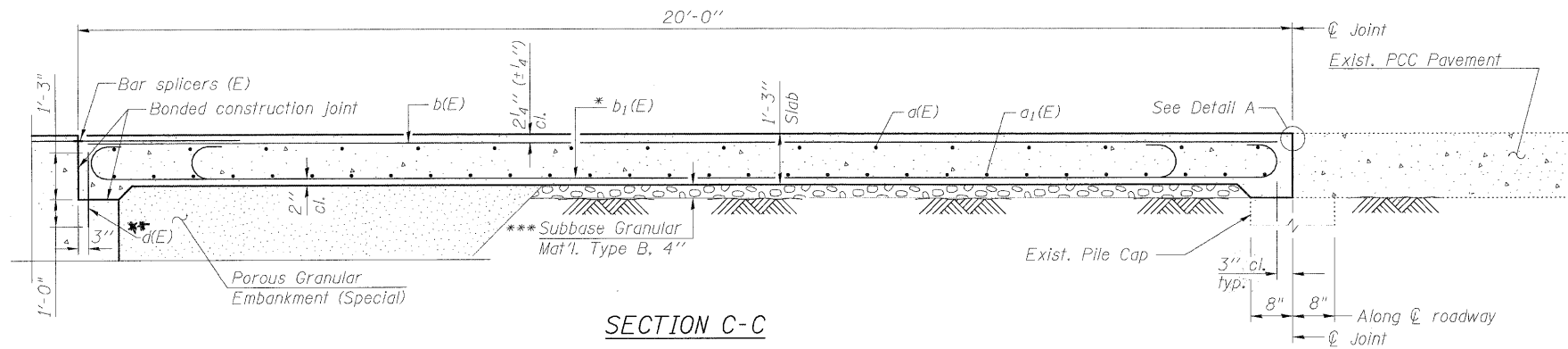


STATE OF ILLINOIS  
DEPARTMENT OF TRANSPORTATION

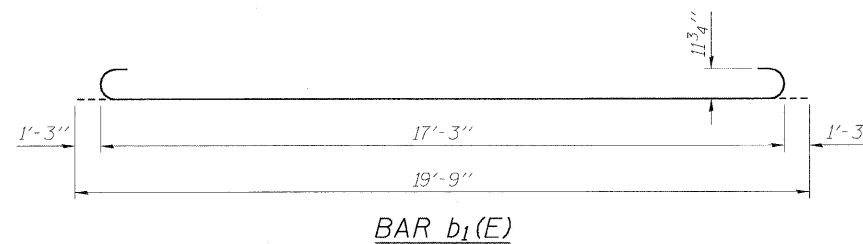
Notes:  
See sheet 19 of 27 for Detail A.  
Reinforcement shall be paid for as Reinforcement Bars, Epoxy Coated.  
Approach Slab concrete shall be paid for as Concrete Superstructure.



\* Tilt #9  $b_1(E)$  bars as required to maintain clearance.  
\*\*\* Cost included with Concrete Superstructure.  
\*\*  $d(E)$  bars to be epoxy grouted in accordance with Art. 584 of the Standard Specifications. Cost included with Reinforcement Bars, Epoxy Coated.

APPROACH  
BILL OF MATERIAL

Bar	No.	Size	Length	Shape
$a(E)$	16	#4	31'-0"	—
$a_1(E)$	30	#5	31'-0"	—
$b(E)$	24	#4	19'-8"	—
$b_1(E)$	72	#9	19'-9"	⌋
$d(E)$	21	#5	2'-3"	—
Concrete Superstructure			Cu. Yd.	18.8
Reinforcement Bars, Epoxy Coated			Pound	6500



BRIDGE APPROACH SLAB DETAILS  
STRUCTURE NO. 045-0061

DESIGNED	BRT
CHECKED	BJM
DRAWN	JNH
CHECKED	BJM



Wight & Company  
2500 North Frontage Road . Darien . IL 60561  
630.969.7000 630.969.7979 fax  
Design Firm Registration 184-000451

SHEET NO. 12 13 SHEETS	F.A.U. RTE. 2503	SECTION 39 EXT-VB-1	COUNTY KANE	TOTAL SHEETS 27	SHEET NO. 20
	CONTRACT NO. 60J48			FED. ROAD DIST. NO. _ ILLINOIS FED. AID PROJECT	