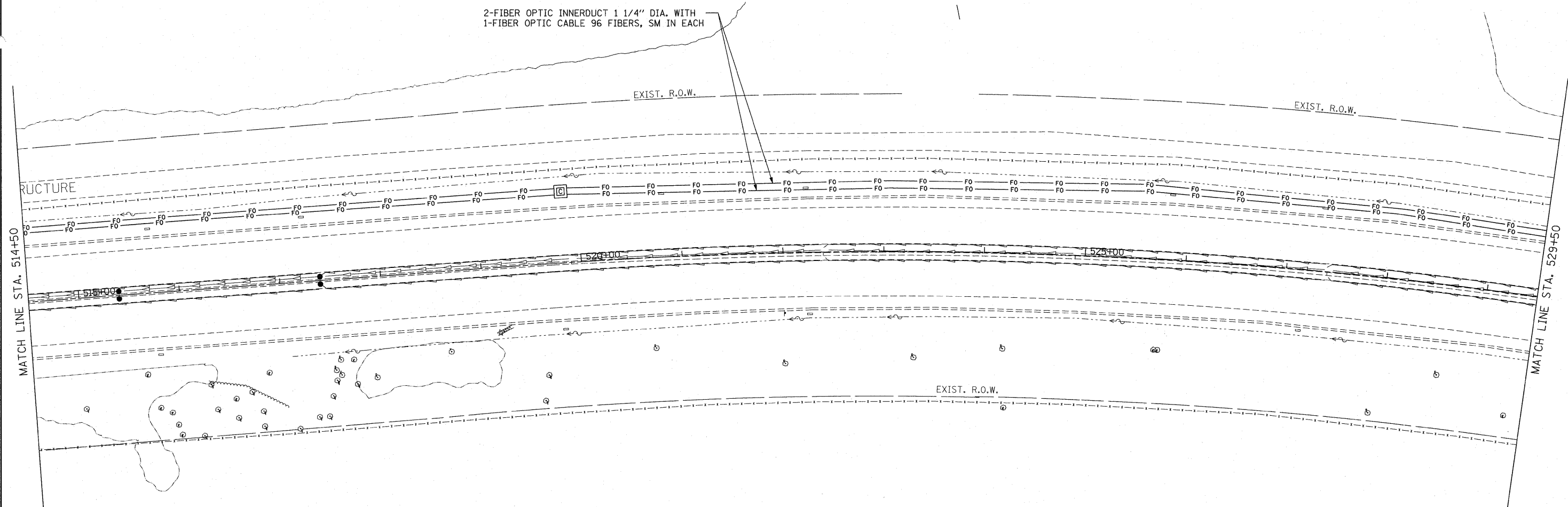




2-FIBER OPTIC INNERDUCT 1 1/4" DIA. WITH  
1-FIBER OPTIC CABLE 96 FIBERS, SM IN EACH



FILE NAME =  
P:\P-07-1600-11\Design\Sht\SHT020.dgn

USER NAME = wingram

DESIGNED -  
DRAWN -

REVISED -  
REVISED -

PLOT SCALE = #SCALE#

CHECKED -  
DATE -

REVISED -  
REVISED -

PLOT DATE = 4/20/2010

**STATE OF ILLINOIS  
DEPARTMENT OF TRANSPORTATION**

**FIBER OPTIC CABLE INSTALLATION - I-55 (I-80 TO NAPERVILLE ROAD)  
STA 514+50 TO STA 529+50**

SCALE: 1" = 50' SHEET NO. OF SHEETS STA. TO STA.

F.A.I. RTE.	SECTION	COUNTY	TOTAL SHEETS	SHEET NO.
55	2009-139 SG	WILL	74	20
FED. ROAD DIST. NO. ILLINOIS FED. AID PROJECT			CONTRACT NO. 60K06	