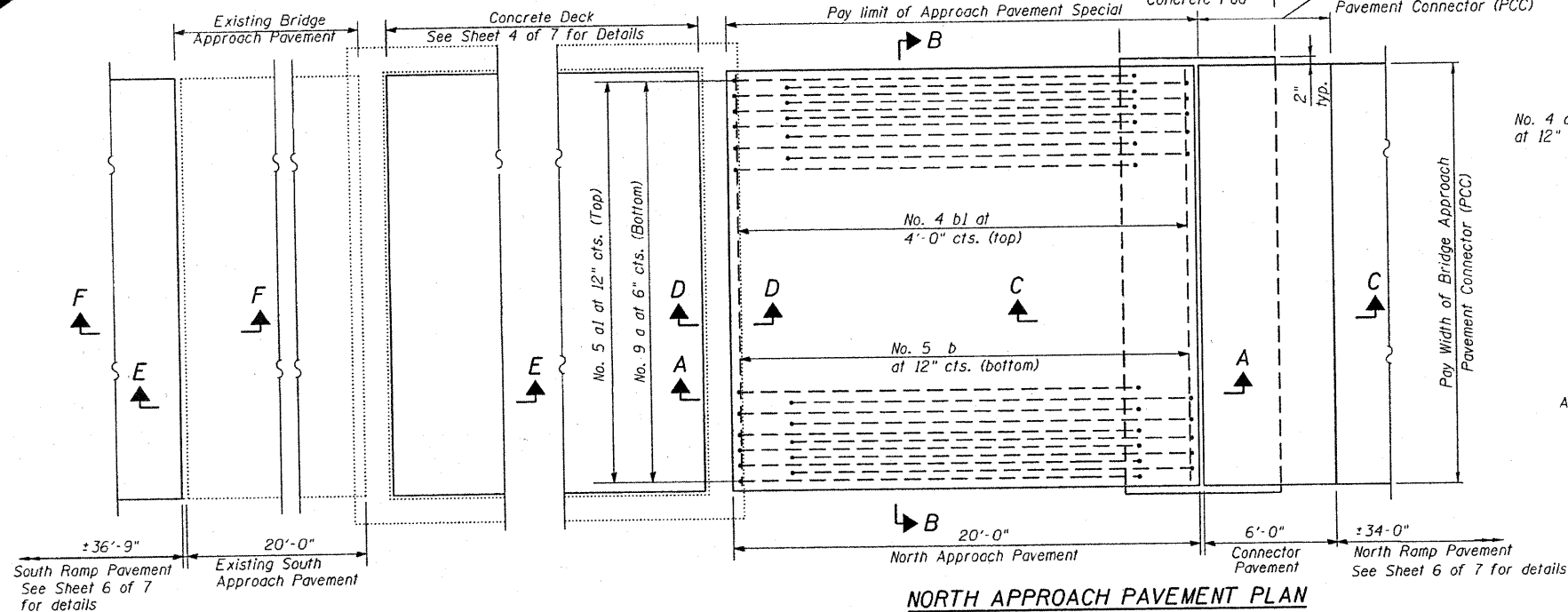
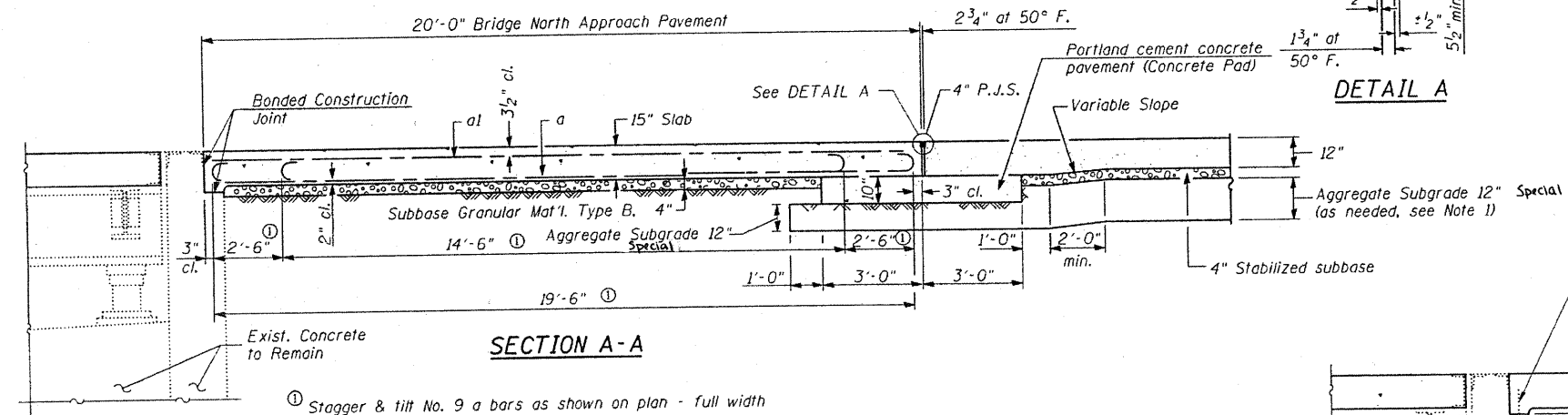


STATE OF ILLINOIS  
DEPARTMENT OF TRANSPORTATION

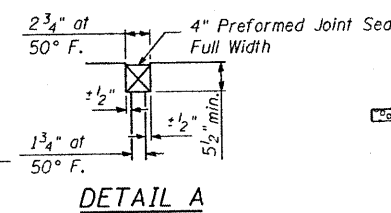


NORTH APPROACH PAVEMENT PLAN

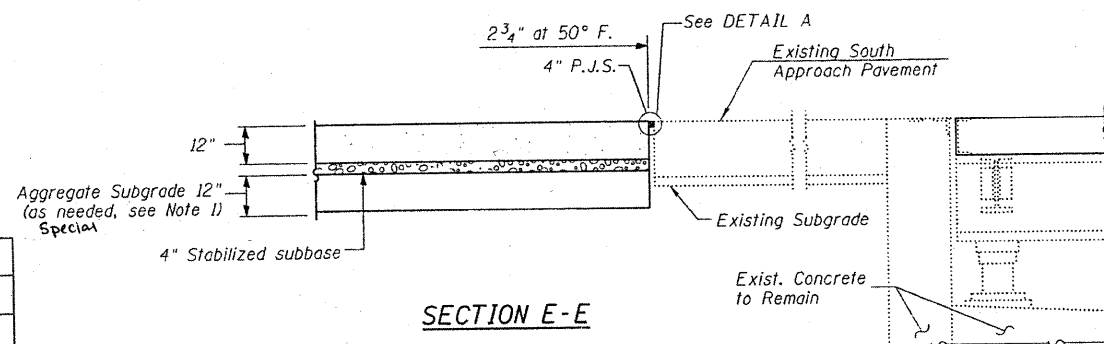
SOUTH APPROACH PAVEMENT PLAN



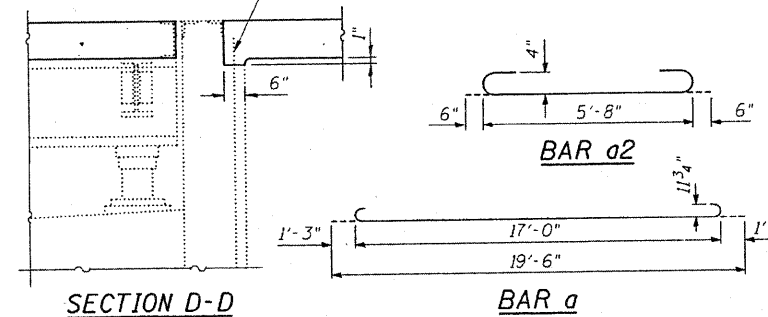
SECTION A-A



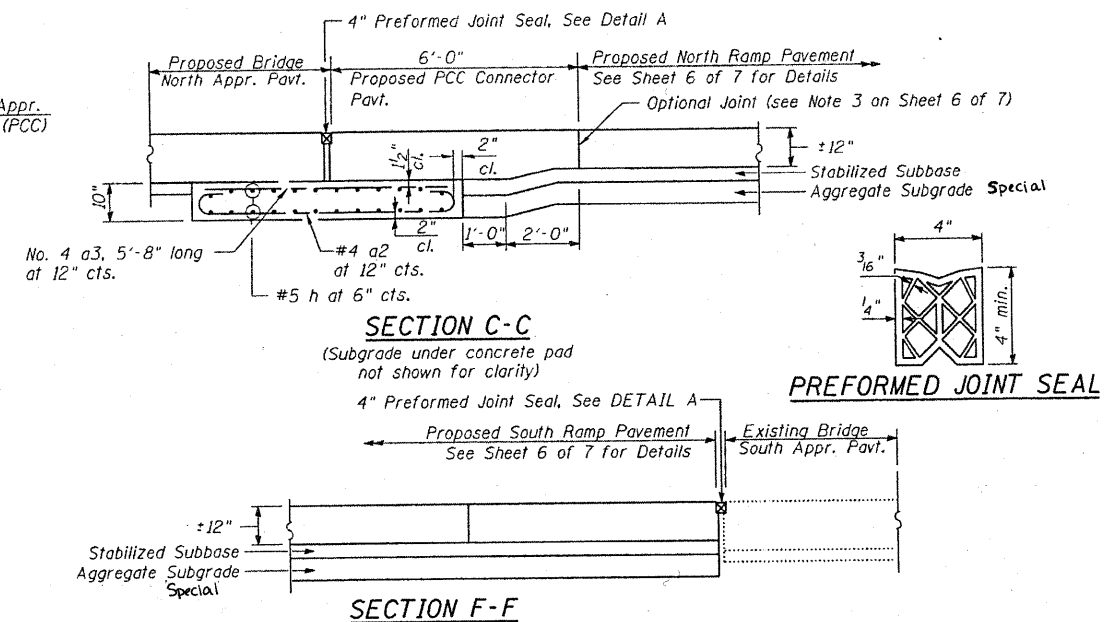
DETAIL A



SECTION E-E



SECTION D-D

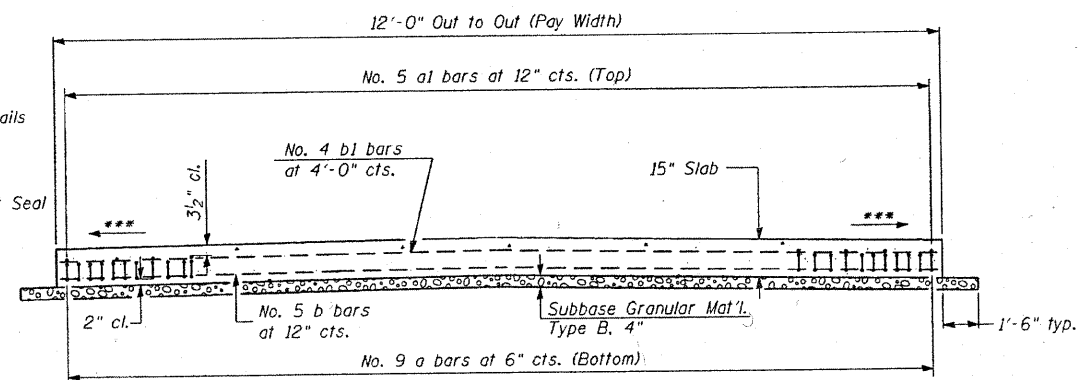


SECTION C-C

(Subgrade under concrete pad not shown for clarity)

SECTION F-F

PREFORMED JOINT SEAL



SECTION B-B

(See Plan for Dimensions not shown)

BILL OF MATERIAL

Item	Unit	Total
Sub-base Granular Material, Type B 4"	Sq. Yd.	28
Bridge Approach Pavement Connector (PCC)	Sq. Yd.	8
Bridge Approach Pavement (Special)	Sq. Yd.	27
Aggregate Subgrade 12" Special	Sq. Yd.	7

NOTES

- Subgrade shall be Aggregate Subgrade 12" Special unless specified otherwise by the Engineer in the field.
- Approach pavement reinforcement included with the cost of Approach Pavement Special.
- See Sheet 6 of 7 for removal details and quantities.

APPROACH PAVEMENT PLAN AND DETAILS  
BOLINGBROOK WEIGH STATION (SB)

DESIGNED - JSD
CHECKED - GWS
DRAWN - GJS
CHECKED - GWS

LOCHNER

H.W. LOCHNER, INC.  
CONSULTING ENGINEERS & PLANNERS  
20 NORTH WACKER DRIVE SUITE 1200  
CHICAGO, IL 60606

SHEET NO. 7	F.A.I. RTE. 55	SECTION 99-1-TWS-1-5	COUNTY WILL	TOTAL SHEETS 13	SHEET NO. 10
7 SHEETS					
CONTRACT NO. 60K43					
FED. ROAD DIST. NO. 1 ILLINOIS FED. AID PROJECT					

T:\4265-1-55-SB\_Weigh\_Station\Struct\dn\60G16-007.dgn