

STATE OF ILLINOIS
 DEPARTMENT OF TRANSPORTATION
 DIVISION OF HIGHWAYS

**PROPOSED
 HIGHWAY PLANS**

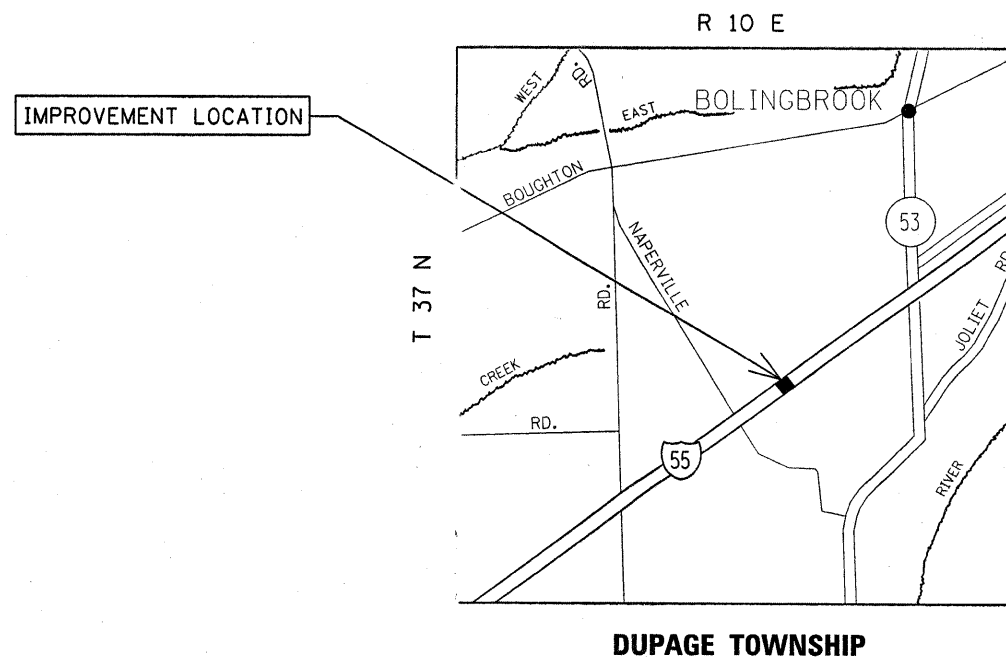
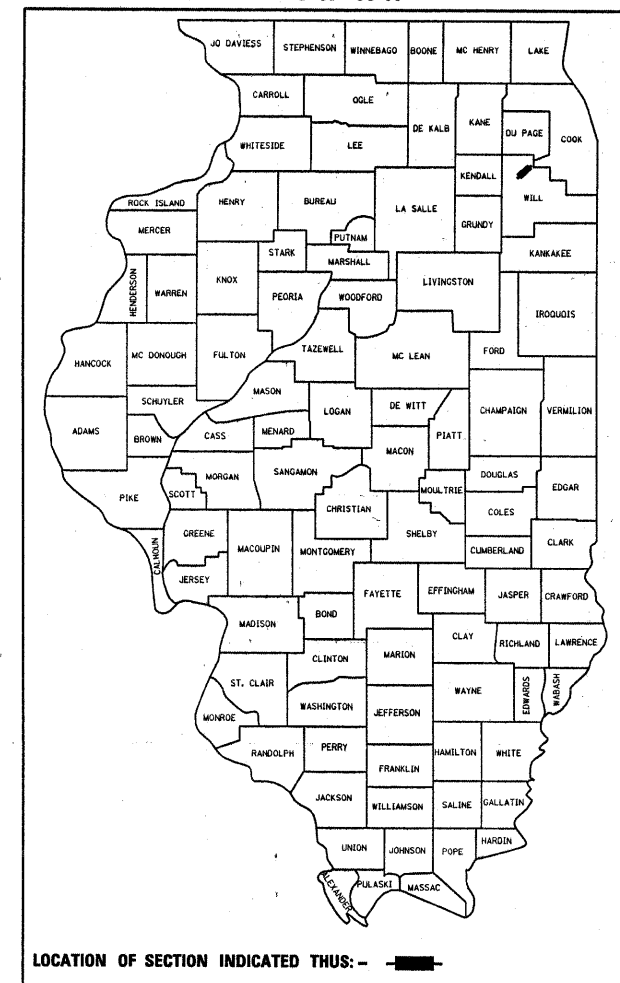
FAI ROUTE 55 (INTERSTATE 55)
 SOUTHBOUND BOLINGBROOK WEIGH STATION
 SECTION: 99-1-TWS-1-5
 WEIGH STATION IMPROVEMENT
 WILL COUNTY
 C-91-489-10

FOR INDEX OF SHEETS, SEE SHEET NO. 2

THE IMPROVEMENT IS LOCATED IN THE
 VILLAGE OF BOLINGBROOK IN WILL COUNTY.

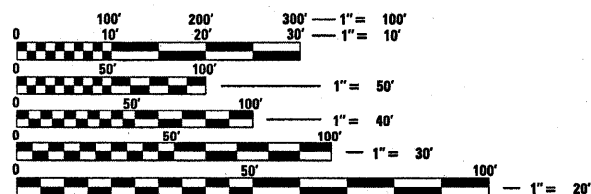
F.A.I. RTE.	SECTION	COUNTY	TOTAL SHEETS	SHEET NO.
55	99-1-TWS-1-5	WILL	13	1
		ILLINOIS	CONTRACT NO. 60K43	

D-91-489-10



TRAFFIC DATA

2007 ADT = 126,200
 POSTED SPEED LIMIT = 55 MPH



FULL SIZE PLANS HAVE BEEN PREPARED USING STANDARD ENGINEERING SCALES. REDUCED SIZED PLANS WILL NOT CONFORM TO STANDARD SCALES. IN MAKING MEASUREMENTS ON REDUCED PLANS, THE ABOVE SCALES MAY BE USED.

J.U.L.I.E.
 JOINT UTILITY LOCATION INFORMATION FOR EXCAVATION
 1-800-892-0123
 OR 811

PROJECT ENGINEER: KARI SMITH (847) 705-4437
 PROJECT MANAGER: KEN ENG

CONTRACT NO. 60K43

STATE OF ILLINOIS
 DEPARTMENT OF TRANSPORTATION
 DIVISION OF HIGHWAYS

SUBMITTED March 22 2010
Don O'Keefe
 DEPUTY DIRECTOR OF HIGHWAYS, REGION ENGINEER

May 7 2010
Scott E. Stitt, P.E.
 acting ENGINEER OF DESIGN AND ENVIRONMENT

May 7 2010
Christine M. Reed
 DIRECTOR OF HIGHWAYS, CHIEF ENGINEER

PRINTED BY THE AUTHORITY
 OF THE STATE OF ILLINOIS

INDEX OF SHEETS

<u>SHEET NO.</u>	<u>DESCRIPTION</u>
1	TITLE SHEET
2	INDEX OF SHEETS, STATE STANDARDS & GENERAL NOTES
3	SUMMARY OF QUANTITIES
4-10	EXISTING AND PROPOSED IMPROVEMENT PLANS
11	DRIVEWAY DETAILS, DISTANCE BETWEEN ROW AND FACE OF CURB < 15' (4.5 M)
12	CURB OR CURB AND GUTTER REMOVAL AND REPLACEMENT
13	FREEWAY ENTRANCE AND EXIT RAMP CLOSURE DETAILS

GENERAL NOTES

BEFORE STARTING ANY EXCAVATION, THE CONTRACTOR SHALL CALL "JULIE" AT (800) 892-0123 OR 811 FOR FIELD LOCATIONS OF BURIED ELECTRIC, TELEPHONE, AND GAS FACILITIES. (48 HOUR NOTIFICATION REQUIRED)

THE CONTRACTOR SHALL COORDINATE CONSTRUCTION ACTIVITIES WITH UTILITY COMPANIES AND THE VILLAGE OF BOLINGBROOK.

THE CONTRACTOR WILL NOT BE ABLE TO SET UP A YARD OR FIELD OFFICE ON STATE PROPERTY WITHOUT THE WRITTEN PERMISSION OF THE DEPARTMENT.

THE RESIDENT ENGINEER SHALL CONTACT MS. CORA MATHIS, AREA TRAFFIC FIELD ENGINEER, AT (815) 485-6475 A MINIMUM OF 2 WEEKS PRIOR TO PLACEMENT OF FINAL PAVEMENT MARKINGS.

THE RESIDENT ENGINEER SHALL VERIFY LOCATIONS OF ALL EXISTING PAVEMENT MARKINGS PRIOR TO MILLING OR RESURFACING.

THE RESIDENT ENGINEER SHALL CONTACT THE TRAFFIC CONTROL SUPERVISOR AT (847) 705-4470 A MINIMUM OF 72 HOURS PRIOR TO THE INSTALLATION OF ANY TEMPORARY TRAFFIC CONTROL DEVICES.

LOCATIONS OF PATCHING AND COMBINATION CURB AND GUTTER REMOVAL AND REPLACEMENT TO BE DETERMINED IN THE FIELD BY THE RESIDENT ENGINEER.

HOT-MIX ASPHALT MIXTURE REQUIREMENTS

	<u>MIXTURE USE</u>	<u>AIR VOIDS (%)</u>
DRIVEWAY	HOT-MIX ASPHALT BASE COURSE, (BINDER IL-19.0 MM), 8"	4% @ 50 GYR
	HOT-MIX ASPHALT SURFACE COURSE, MIX "C", N50, (IL-9.5 MM), 2"	4% @ 50 GYR
MEDIAN SURFACE	HOT-MIX ASPHALT SURFACE COURSE, MIX "C", N50, (IL-9.5MM), 2"	4% @ 50 GYR

THE UNIT WEIGHT USED TO CALCULATE ALL HOT-MIX ASPHALT SURFACE MIXTURE QUANTITIES IS 112 LBS/SY/IN.

* THE "AC TYPE FOR POLYMERIZED HMA MIXES SHALL BE "SBS/SBR PG 70-22" AND FOR NON POLYMERIZED HMA THE "AC TYPE" SHALL BE "PG 64-22" UNLESS MODIFIED BY DISTRICT 1 SPECIAL PROVISIONS.
FOR "PERCENT OF RAP" SEE DISTRICT 1 SPECIAL PROVISIONS

STATE STANDARDS

<u>STANDARD NO.</u>	<u>DESCRIPTION</u>
000001-05	TYPICAL SYMBOLS, ABBREVIATIONS AND PATTERNS
001001-02	AREAS OF REINFORCEMENT BARS
001006	DECIMAL OF AN INCH AND OF A FOOT
420001-07	PAVEMENT JOINTS
420401-08	BRIDGE APPROACH PAVEMENT CONNECTOR
420701-02	PAVEMENT FABRIC
442101-07	CLASS B PATCHES
606001-04	CONCRETE CURB TYPE B AND COMBINATION CONCRETE CURB AND GUTTER
701901-01	TRAFFIC CONTROL DEVICES

FILE NAME =	USER NAME = rosiera/jm	DESIGNED J M ROSIERE	REVISED -	STATE OF ILLINOIS DEPARTMENT OF TRANSPORTATION	INTERSTATE 55 (SB BOLINGBROOK WEIGH STATIONS) INDEX OF SHEETS, STATE STANDARDS AND GENERAL NOTES			F.A.I. RTE.	SECTION	COUNTY	TOTAL SHEETS	SHEET NO.
ct:\pw_work\PWIDOT\ROSIERE\JM\184552\DistStd.dgn		DRAWN J M ROSIERE	REVISED -		55	99-1-TWS-1-5	WILL	13	2			
PLOT SCALE = 500000' / IN.		CHECKED -	REVISED -		SCALE: NOT TO SCALE SHEET NO. 1 OF 1 SHEETS			STA.	TO STA.	CONTRACT NO. 60K43		
PLOT DATE = 3/20/2000		DATE -	REVISED -					FED. ROAD DIST. NO. 1 ILLINOIS				

SUMMARY OF QUANTITIES			CONSTRUCTION TYPE CODE					SUMMARY OF QUANTITIES			CONSTRUCTION TYPE CODE							
CODE NO	ITEM	UNIT	TOTAL QUANTITIES	TRUCK SCALES (FIXED) Y222					CODE NO	ITEM	UNIT	TOTAL QUANTITIES	TRUCK SCALES (FIXED) Y222					
25000210	SEEDING, CLASS 2A	ACRE	0.1	0.1					X0325305	STRUCTURAL REPAIR OF CONCRETE (DEPTH EQUAL TO OR LESS THAN 5 INCHES)	SQ FT	8	8					
25000400	NITROGEN FERTILIZER NUTRIENT	POUND	9	9														
25000500	PHOSPHORUS FERTILIZER NUTRIENT	POUND	9	9														
25000600	POTASSIUM FERTILIZER NUTRIENT	POUND	9	9														
25100115	MULCH, METHOD 2	ACRE	0.1	0.1					X7011015	TRAFFIC CONTROL AND PROTECTION (EXPRESSWAYS)	L SUM	1	1					
31101200	SUB-BASE GRANULAR MATERIAL, TYPE B 4"	SQ YD	28	28					Z0001055	AGGREGATE SUBGRADE 12", SPECIAL	SQ YD	135	135					
31200100	STABILIZED SUB-BASE 4"	SQ YD	124	124					Z0017202	DOWEL BARS 1 1/2"	EACH	20	20					
40603080	HOT-MIX ASPHALT BINDER COURSE, IL-19.0, N50	TON	3	3					Z0075310	TIE BARS 3/4"	EACH	78	78					
40603310	HOT-MIX ASPHALT SURFACE COURSE, MIX "C", N50	TON	1	1														
42001400	BRIDGE APPROACH PAVEMENT (SPECIAL)	SQ YD	27	27														
42001420	BRIDGE APPROACH PAVEMENT CONNECTOR (PCC)	SQ YD	8	8														
44000100	PAVEMENT REMOVAL	SQ YD	8	8														
44000200	DRIVEWAY PAVEMENT REMOVAL	SQ YD	7	7														
44000500	COMBINATION CURB AND GUTTER REMOVAL	FOOT	162	162														
44000700	APPROACH SLAB REMOVAL	SQ YD	27	27														
44003100	MEDIAN REMOVAL	SQ FT	158	158														
44201000	CLASS B PATCHES, TYPE IV, 12 INCH	SQ YD	95	95														
44213100	PAVEMENT FABRIC	SQ YD	95	95														
44213200	SAW CUTS	FOOT	48	48														
50104720	REMOVAL OF EXISTING CONCRETE DECK	EACH	1	1														
50300255	CONCRETE SUPERSTRUCTURE	CU YD	25	25														
50300300	PROTECTIVE COAT	SQ YD	280	280														
50600600	CLEANING AND PAINTING STEEL BRIDGE NO. 1	L SUM	1	1														
50606401	CONTAINMENT AND DISPOSAL OF LEAD PAINT CLEANING RESIDUES NO.1	L SUM	1	1														
50800205	REINFORCEMENT BARS, EPOXY COATED	POUND	9860	9860														
60603800	COMBINATION CONCRETE CURB AND GUTTER, TYPE B-6.12	FOOT	58	58														
60608300	COMBINATION CONCRETE CURB AND GUTTER, TYPE M-2.12	FOOT	105	105														
60626300	STABILIZED MEDIAN SURFACE	SQ YD	18	18														
67000400	ENGINEER'S FIELD OFFICE, TYPE A	CAL MO	6	6														
67100100	MOBILIZATION	L SUM	1	1														
* 78008230	POLYUREA PAVEMENT MARKING TYPE I - LINE 6"	FOOT	588	588														
* 78008270	POLYUREA PAVEMENT MARKING TYPE I - LINE 24"	FOOT	12	12														
X0324265	JACK REMOVE AND REPLACE LOAD CELLS	L SUM	1	1														

*Specialty Items

Rev.

FILE NAME =	USER NAME = rosirejm	DESIGNED - J M ROSIERE	REVISED -	STATE OF ILLINOIS DEPARTMENT OF TRANSPORTATION	INTERSTATE 55 (SB BOLINGBROOK WEIGH STATION) SUMMARY OF QUANTITIES	F.A.I. RTE.	SECTION	COUNTY	TOTAL SHEETS	SHEET NO.
cd\pwr\KVP\DOT\ROSIERE\JMD\0184552\DistStd.dgn	PLOT SCALE = 50.0000 "/ IN.	DRAWN - J M ROSIERE	REVISED -			55	99-1-TWS-1-5	WILL	13	3
PLOT DATE = 3/29/2010	CHECKED -	REVISED -	REVISED -			CONTRACT NO. 60K43				
DATE -	REVISED -	REVISED -	SCALE:			SHEET NO. 1 OF 1 SHEETS	STA. TO STA.	FED. ROAD DIST. NO. 1 ILLINOIS		

Existing Structure: S.B. Weigh Station at Bolingbrook was originally built in 1984 as F.A.I. Route 55, Section 99-1TWS-2-I-1 (82), Project IR-55-6(152) 267 Will County. The existing concrete deck, north approach slab, and north and south ramp pavements are to be removed and replaced at the S.B. station. Traffic will be detoured.

STATE OF ILLINOIS
DEPARTMENT OF TRANSPORTATION

TOTAL BILL OF MATERIAL

GENERAL NOTES

Reinforcement bars shall conform to the requirements of ASTM A 706 Gr 60. See Special Provisions.

Plan dimensions and details relative to existing plans are subject to nominal construction variations. The Contractor shall field verify existing dimensions and details affecting new construction and make necessary approved adjustments prior to construction or ordering of materials. Such variations shall not be cause for additional compensation for a change in scope of the work, however, the Contractor will be paid for the quantity actually furnished at the unit price bid for the work.

All construction joints shall be bonded.

The existing structural steel coating contains lead. The Contractor shall take appropriate precautions to deal with the presence of lead on this project.

The cost of any structure excavation shall be included with Approach Slab Removal, Pavement Removal or Class B Patches.

Cleaning and painting of the existing structural steel shall be as specified in the special provision for "Cleaning and Painting Existing Steel Structures". All existing steel shall be cleaned per Near White Blast Cleaning-SSPC-SP10. All existing steel shall be painted according to the requirements of Paint System 1-OZ/E/U. The color of the final finish coat shall be Gray, Munsell No 5B 7/1.

The SSPC-QP1 and SSPC-QP2 Painting Contractor Certifications will not be required for this Structure.

Field welding of construction accessories will not be permitted to beams.

Prior to pouring the new concrete deck, all heavy or loose rust, loose mill scale, and other loose or potentially detrimental foreign material shall be removed from the surfaces in contact with concrete. Tightly adhered paint may remain unless otherwise noted. Removal shall be accomplished by methods that will not damage the steel and the cost will be included in the pay item covering removal of the existing concrete.

The Contractor shall fine the concrete surface of the platforms according to Article 420.09(e)(1) of the Standard Specifications. Cost included in Concrete Superstructure.

Cost of removal and disposal of subbase or subgrade material from the patches shall be included in the cost of Stabilized Sub-base 4" or Aggregate Subgrade 12".

All existing pavement markings that are removed shall be re-established after completion of pavement installation. Estimated quantity for Polyurea Pavement Marking Type I - Line 6" and 24" provided. The Contractor will be paid for the quantity actually furnished at the unit price bid for the work.

Reinforcement bars designated (E) shall be epoxy coated.

Locations of median removal and driveway pavement removal shall be determined in the field by the Engineer.

The existing material under the median surface shall be reused unless otherwise directed by the Engineer. The cost of reusing or replacing this material with suitable backfill is included in the cost of the curb and gutter replacement.

INDEX OF SHEETS

- 1 General Data
- 2 General Plan and Elevation
- 3 Concrete Removal Plan and Details
- 4 Concrete Deck Plan and Details
- 5 Concrete Pit Repair Details
- 6 Approach and Ramp Pavement Removal Plan and Details
- 7 Approach Pavement Plan and Details

SCOPE OF WORK

1. Remove and replace concrete decks of the 4 platform scales.
2. Jack existing structural steel and replace load cells.
3. Remove and replace north approach pavement, north and south ramp pavements and curb and gutter up to first pavement joint.
4. Clean and paint structural steel.
5. Repair deteriorated areas of concrete on pit walls.

ITEM	UNIT	SUPER	SUB	TOTAL
Seeding, Class 2A	Acre	0.1		0.1
Nitrogen Fertilizer Nutrient	Pound	9		9
Phosphorus Fertilizer Nutrient	Pound	9		9
Potassium Fertilizer Nutrient	Pound	9		9
Mulch, Method 2	Acre	0.1		0.1
Sub-base Granular Material, Type B 4"	Sq. Yd.	28		28
Stabilized Sub-base 4"	Sq. Yd.	124		124
Hot-Mix Asphalt Binder Course, IL-19.0, N50	Ton	3		3
Hot-Mix Asphalt Surface Course, Mix "C", N50	Ton	1		1
Protective Coat	Sq. Yd.	280		280
Bridge Approach Pavement Connector (PCC)	Sq. Yd.	8		8
Pavement Removal	Sq. Yd.	8		8
Driveway Pavement Removal	Sq. Yd.	7		7
Combination Curb and Gutter Removal	Foot	162		162
Approach Slab Removal	Sq. Yd.	27		27
Median Removal	Sq. Ft.	158		158
Class B Patches, Type IV, 12"	Sq. Yd.	95		95
Pavement Fabric	Sq. Yd.	95		95
Saw Cuts	Foot	48		48
Removal of Existing Concrete Deck	Each	1		1
Concrete Superstructure	Cu. Yd.	25		25
Cleaning and Painting Steel Bridge No. 1	L. Sum	1		1
Containment and Disposal of Lead Paint Cleaning Residues No 1.	L. Sum	1		1
Reinforcement Bars, Epoxy Coated	Pound	9,860		9,860
Combination Concrete Curb and Gutter, Type B-6.12	Foot	58		58
Combination Concrete Curb and Gutter, Type M-2.12	Foot	105		105
Stabilized Median Surface	Sq. Yd.	18		18
Mobilization	L. Sum	1		1
Polyurea Pavement Marking Type I - Line 6"	Foot	588		588
Polyurea Pavement Marking Type I - Line 24"	Foot	12		12
Jack Remove and Replace Load Cells	L. Sum	1		1
Structural Repair of Concrete (Depth equal to or less than 5")	Sq. Ft.	8		8
Bridge Approach Pavement (Special)	Sq. Yd.	27		27
Aggregate Subgrade 12" (Special)	Sq. Yd.	135		135
Dowel Bars 1/2"	Each	20		20
Tie Bars 3/4"	Each	78		78

T:\4265-1-1-55-SB_Weigh_Station\Struct\dgn\60G16-001.dgn

LOADING HS20-44

No future wearing surface allowed on scale decks

DESIGN SPECIFICATIONS

17th Edition - 2002 AASHTO

DESIGN STRESSES

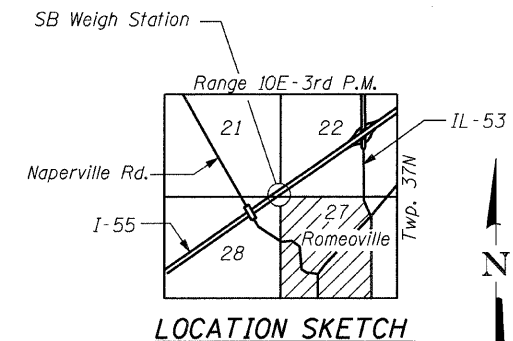
NEW CONSTRUCTION

$f_c = 3,500$ psi (Deck)
 $f_y = 60,000$ psi (Reinforcement)
 $f_y = 36,000$ psi (Structural Steel AASHTO M270 Grade 36)

FIELD UNITS (PIT)

$f_c = 1,000$ psi
 $f_s = 20,000$ psi (Reinforcement)
 $f_s = 20,000$ psi (Structural Steel)

APPROVED
FOR STRUCTURAL ADEQUACY ONLY
Ralph E. Anderson (SE)
ENGINEER OF BRIDGES AND STRUCTURES



GENERAL DATA
BOLINGBROOK WEIGH STATION (SB)
F.A.I. RT. 55 / I-55 - SEC. 2009-017 I
WILL COUNTY
STATION 395+00

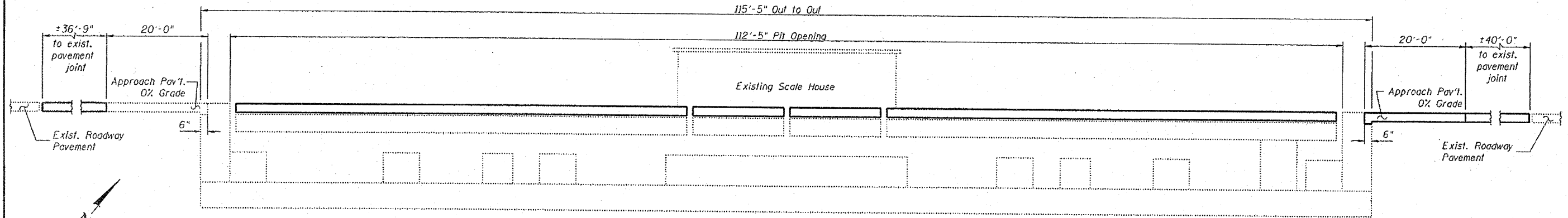
DESIGNED - JSD
CHECKED - GWS
DRAWN - GJS
CHECKED - GWS

LOCHNER

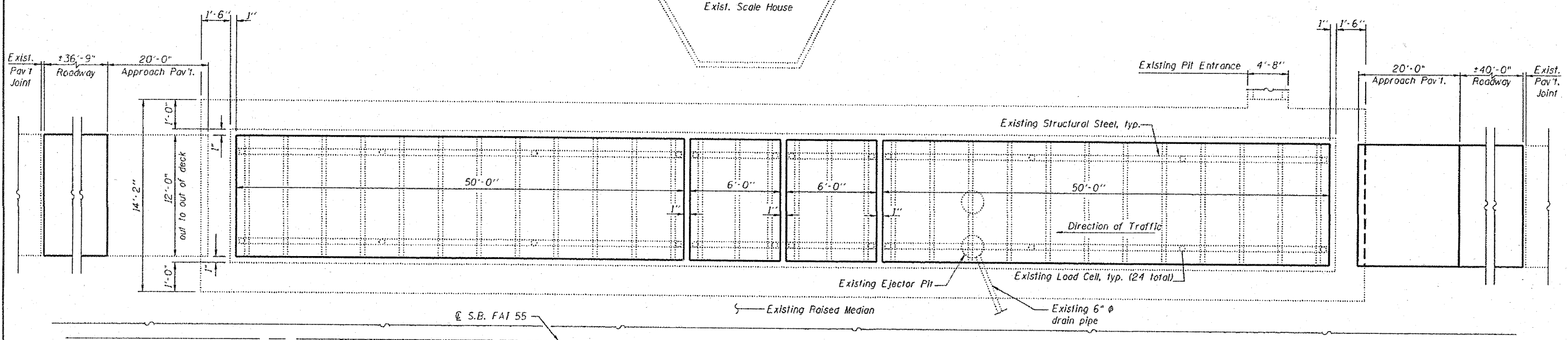
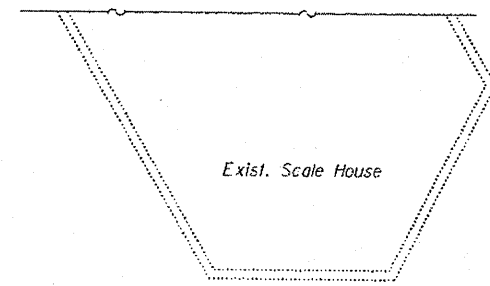
H.W. LOCHNER, INC.
CONSULTING ENGINEERS & PLANNERS
20 NORTH WACKER DRIVE SUITE 1200
CHICAGO, IL 60606

SHEET NO. 1 7 SHEETS	F.A.I. RTE.	SECTION	COUNTY	TOTAL SHEETS	SHEET NO.
	55	99-1-TWS-I-5	WILL	13	4
CONTRACT NO. 60K43					
FED. ROAD DIST. NO. 1 ILLINOIS FED. AID PROJECT					

STATE OF ILLINOIS
DEPARTMENT OF TRANSPORTATION



LONGITUDINAL SECTION
(S.B. Structure)



PLAN
(S.B. Structure)

GENERAL PLAN AND ELEVATION
BOLINGBROOK WEIGH STATION (SB)
F.A.I. RT. 55 / I-55 - SEC. 2009-017 I
WILL COUNTY
STATION 395+00

DESIGNED - JSD
CHECKED - GWC
DRAWN - GJS
CHECKED - GWC

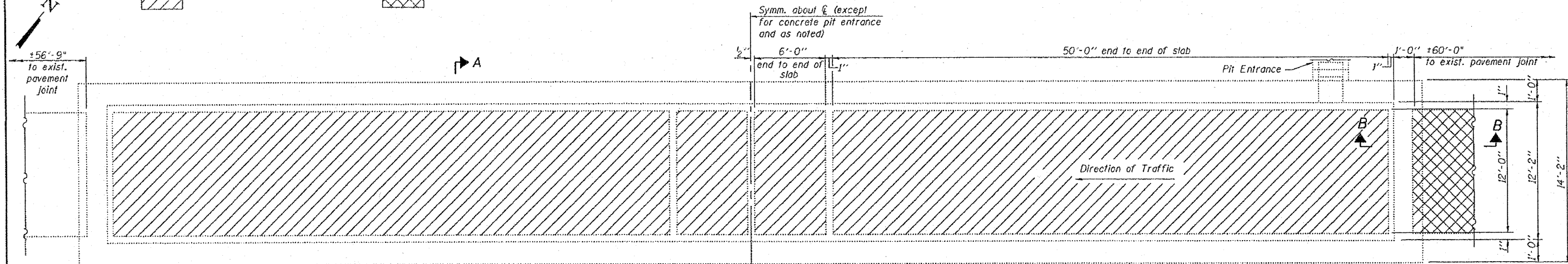
LOCHNER
H.W. LOCHNER, INC.
CONSULTING ENGINEERS & PLANNERS
20 NORTH WACKER DRIVE SUITE 1200
CHICAGO, IL 60606

SHEET NO. 2 7 SHEETS	F.A.I. RTE.	SECTION	COUNTY	TOTAL SHEETS	SHEET NO.
	55	99-1-TWS-I-5	WILL	13	5
CONTRACT NO. 60K43					
FED. ROAD DIST. NO. 1 ILLINOIS FED. AID PROJECT					

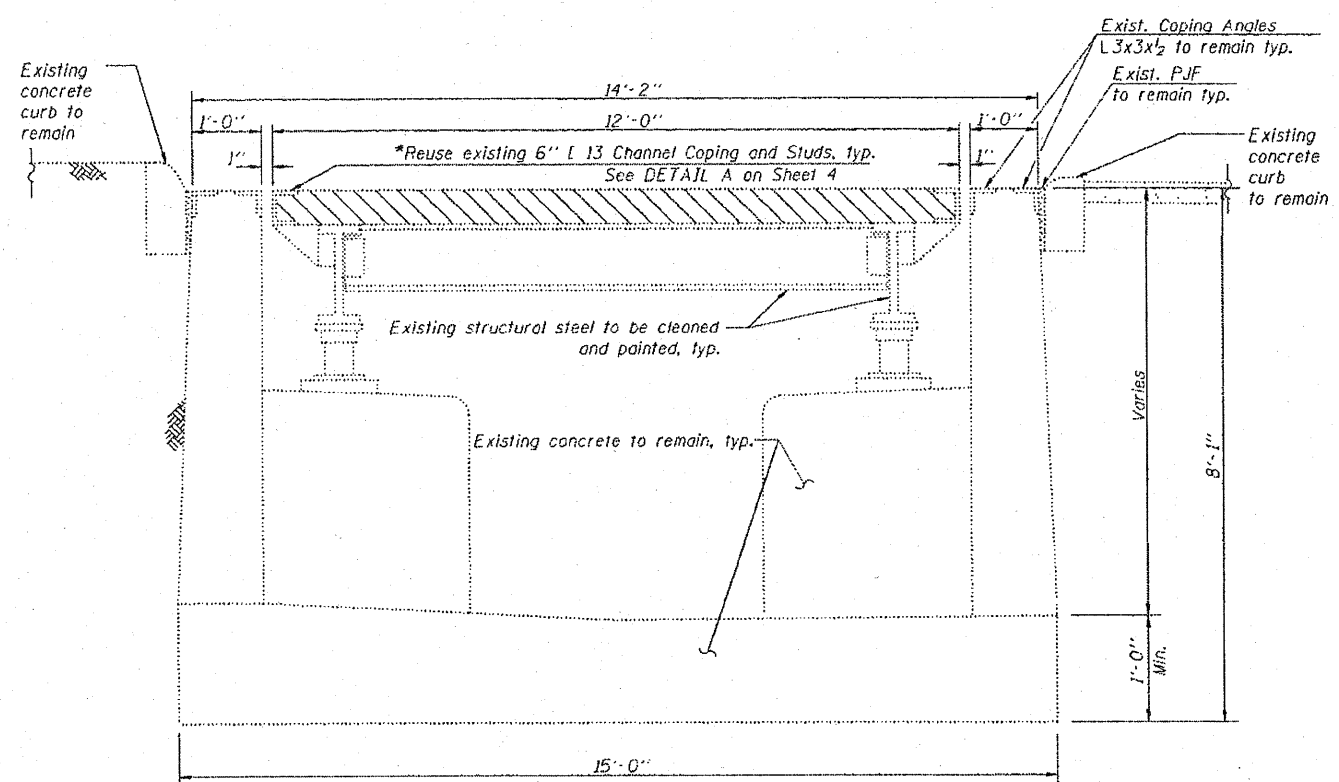
T:\4265-1-55-SB_Weigh_Station\Struct\dgn\60G16-002.dgn

STATE OF ILLINOIS
DEPARTMENT OF TRANSPORTATION

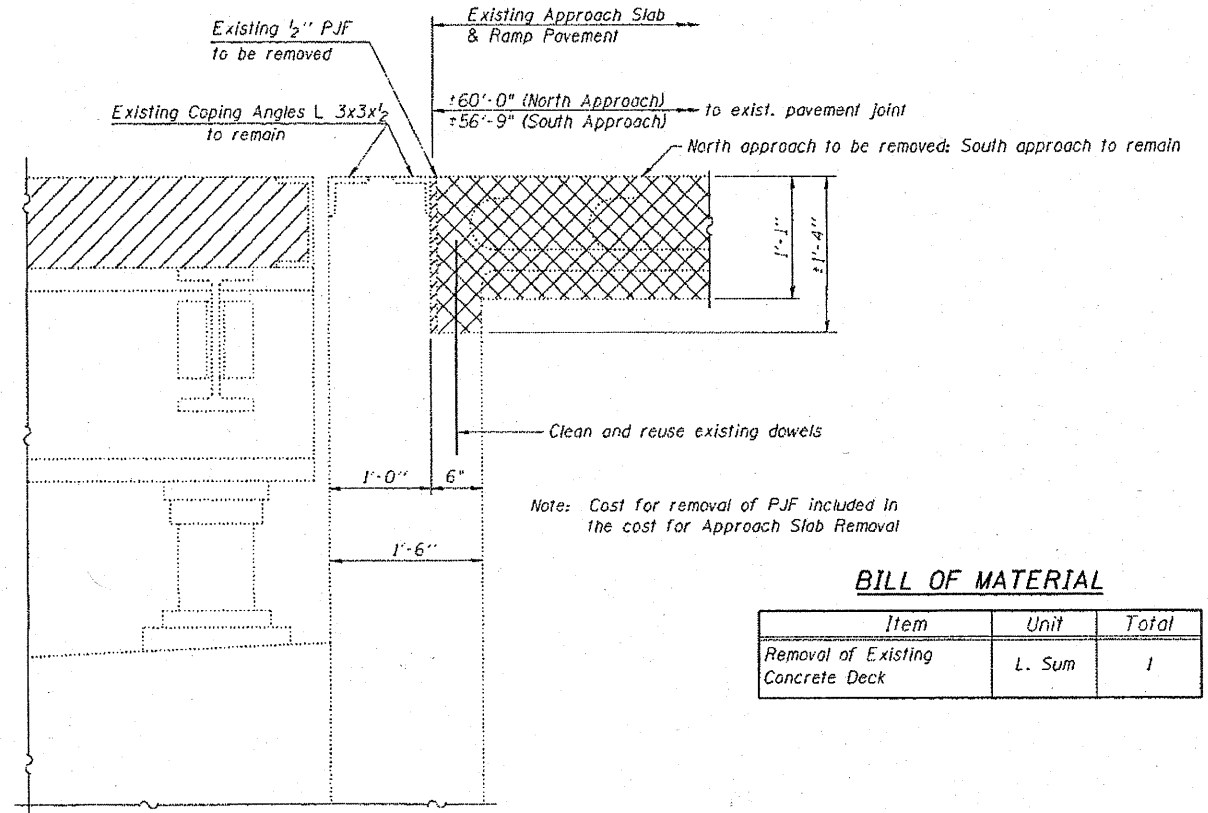
Indicates concrete to be removed as Removal of Existing Concrete Deck.  Indicates concrete to be removed as Approach Slab Removal and Pavement Removal (See Sheet 6 for details) 



PLAN
(Coping not shown)



SECTION A-A * See Note A on Sheet 4 of 7



SECTION B-B

BILL OF MATERIAL

Item	Unit	Total
Removal of Existing Concrete Deck	L. Sum	1

NOTE:
See Sheet 6 of 7 for approach slab and ramp pavement removal details and Bill of Material.

CONCRETE REMOVAL PLAN AND DETAILS
BOLINGBROOK WEIGH STATION (SB)

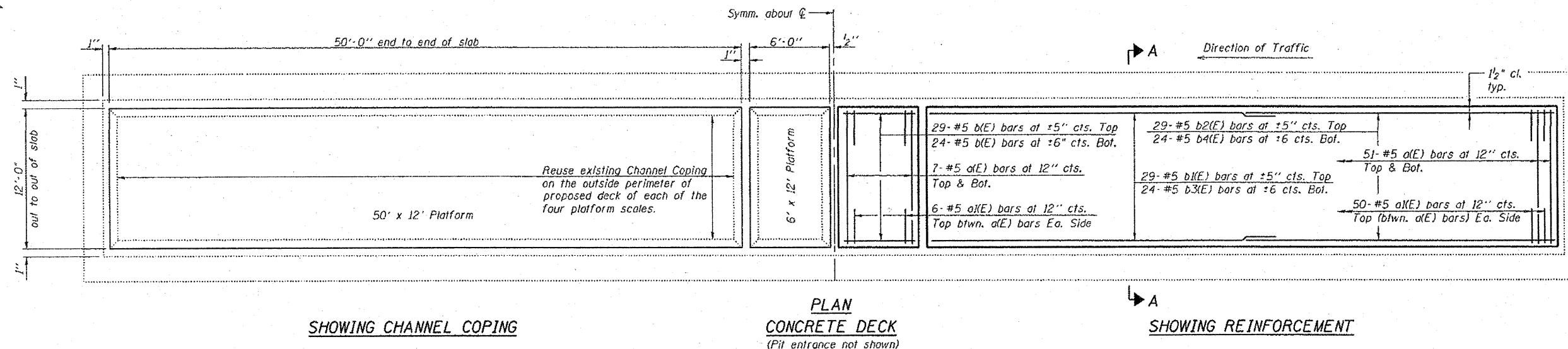
DESIGNED - JSD
CHECKED - GWS
DRAWN - GJS
CHECKED - GWS

LOCHNER
H.W. LOCHNER, INC.
CONSULTING ENGINEERS & PLANNERS
20 NORTH WACKER DRIVE SUITE 1200
CHICAGO, IL 60606

SHEET NO. 3 7 SHEETS	F.A.I. RTE.	SECTION	COUNTY	TOTAL SHEETS	SHEET NO.
	55	99-1-TWS-1-5	WILL	13	6
			CONTRACT NO. 60K43		
FED. ROAD DIST. NO. 1 ILLINOIS FED. AID PROJECT					

T:\4265-1-55-SB_Weigh_Station\Struct\dgn\60G16-003.dgn

STATE OF ILLINOIS
DEPARTMENT OF TRANSPORTATION



MIN. BAR LAP

#5 Bar = 2'-2"

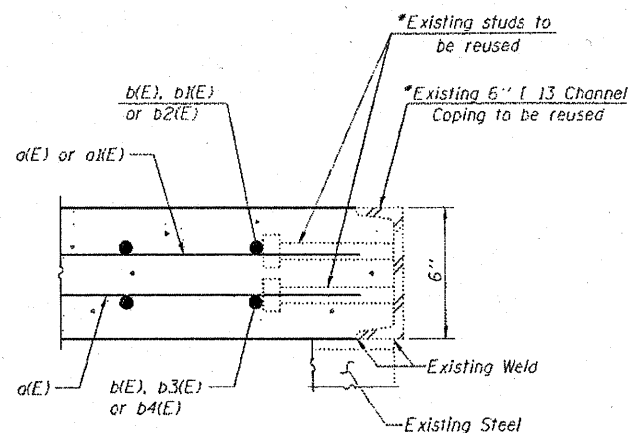
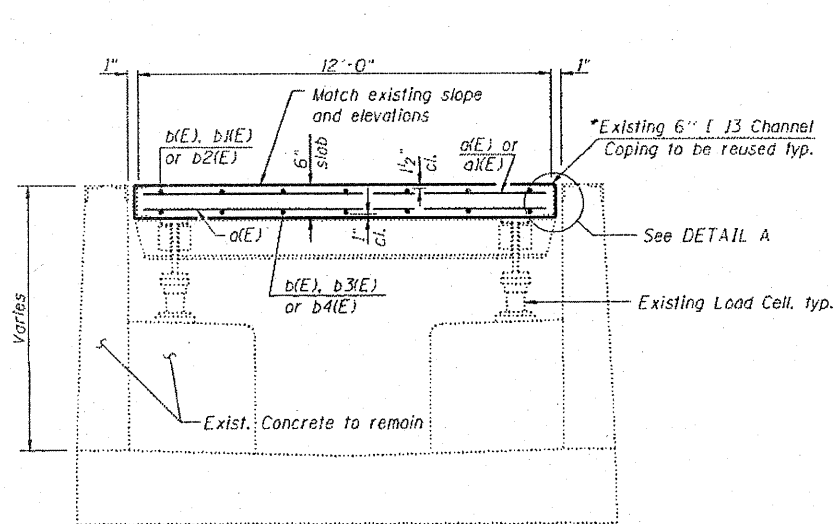
BILL OF MATERIAL

Bar	No.	Size	Length	Shape
a(E)	232	#5	11'-9"	—
a(E)	224	#5	2'-9"	—
b(E)	106	#5	5'-9"	—
b(E)	58	#5	29'-1"	—
b2(E)	58	#5	22'-10"	—
b3(E)	48	#5	27'-1"	—
b4(E)	48	#5	24'-10"	—
Protective Coat		Sq. Yd.	150	
Conc. Superstructure		Cu. Yd.	25	
Reinforcement Bars, Epoxy Coated		Pound	9860	

NOTE:

See Sheets 6 and 7 of 7 for approach and ramp pavement details.

CONCRETE DECK PLAN AND DETAILS
BOLINGBROOK WEIGH STATION (SB)



Note A:

*The Contractor has the option to remove the existing channel coping (with existing studs) which is welded to the existing steel and replace it with new channel coping (with new studs). If the Contractor chooses to do this, the Bureau of Bridges and Structures shall be contacted for weld information. The Contractor shall exercise care not to damage the existing steel which is to be reused, and there shall be no extra cost to the Department. The cost of removing, cleaning, painting and reinstalling the existing coping channels shall be included with the cost of Removal of Existing Concrete Deck.

DESIGNED - JSD
CHECKED - GWS
DRAWN - GJS
CHECKED - GWS

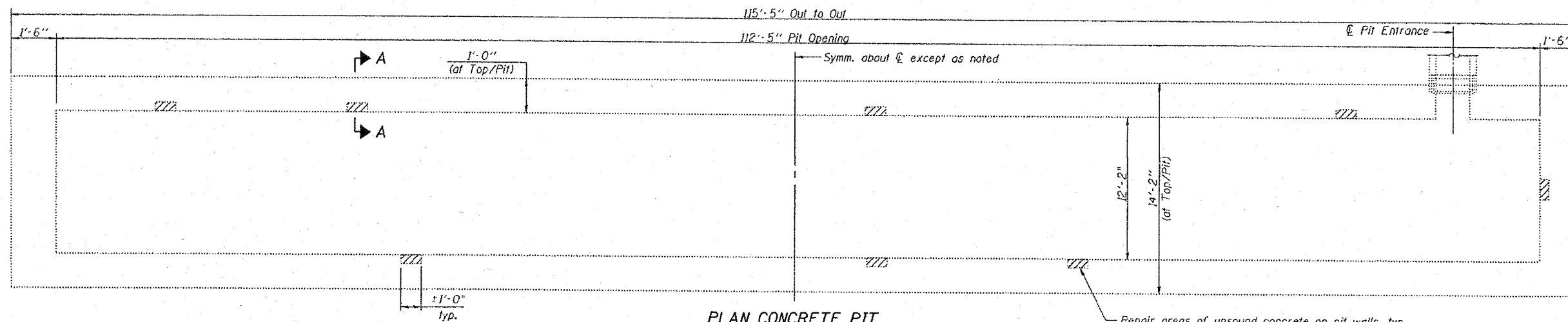
LOCHNER

H.W. LOCHNER, INC.
CONSULTING ENGINEERS & PLANNERS
20 NORTH WACKER DRIVE SUITE 1200
CHICAGO, IL 60606

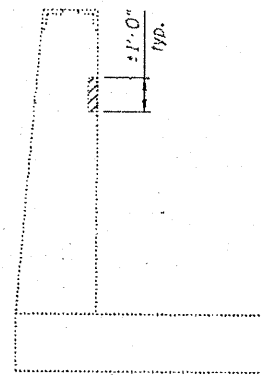
SHEET NO. 4	F.A.I. RTE.	SECTION	COUNTY	TOTAL SHEETS	SHEET NO.
7 SHEETS	55	99-1-TWS-I-5	WILL	13	7
CONTRACT NO. 60K43					
FED. ROAD DIST. NO. 1 ILLINOIS FED. AID PROJECT					

T:\4265-1-55-SB_Weigh_Station\Struct\dgn\60G16-004.dgn


STATE OF ILLINOIS
DEPARTMENT OF TRANSPORTATION



PLAN CONCRETE PIT
(Platform decks, existing steel and existing concrete pedestals not shown)



SECTION A-A

 Structural Repair of Concrete
(Depth equal to or less than 5")

NOTE
The Engineer shall determine the extent and location of repairs in the field. Locations shown are for information only. An estimated quantity has been provided. Such variations shall not be cause for additional compensation for a change in the scope of work; however, the Contractor will be paid for the quantity actually furnished based upon the unit price bid for the work.

BILL OF MATERIAL

Item	Unit	Total
Structural Repair of Concrete (Depth equal to or less than 5")	Sq. Ft.	8

**CONCRETE PIT REPAIR DETAILS
BOLINGBROOK WEIGH STATION (SB)**

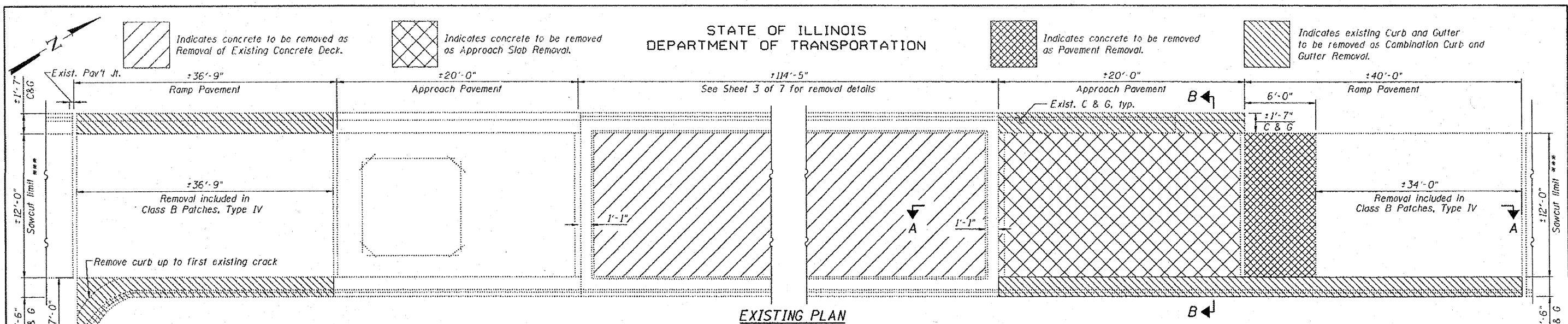
DESIGNED - JSD
CHECKED - GWS
DRAWN - GJS
CHECKED - GWS

LOCHNER
H.W. LOCHNER, INC.
CONSULTING ENGINEERS & PLANNERS
20 NORTH WACKER DRIVE SUITE 1200
CHICAGO, IL 60606

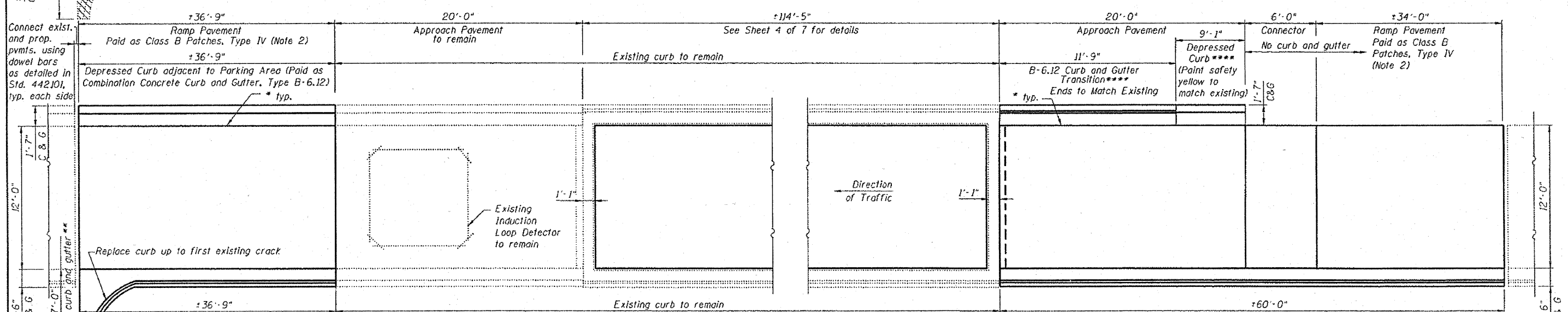
SHEET NO. 5	F.A.I. RTE.	SECTION	COUNTY	TOTAL SHEETS	SHEET NO.
7 SHEETS	55	99-1-TWS-1-5	WILL	13	8
CONTRACT NO. 60K43					
FED. ROAD DIST. NO. 1 ILLINOIS FED. AID PROJECT					

T:\4265-1-55-SB_Weigh_Station\Struct\dgn\60616-005.dgn

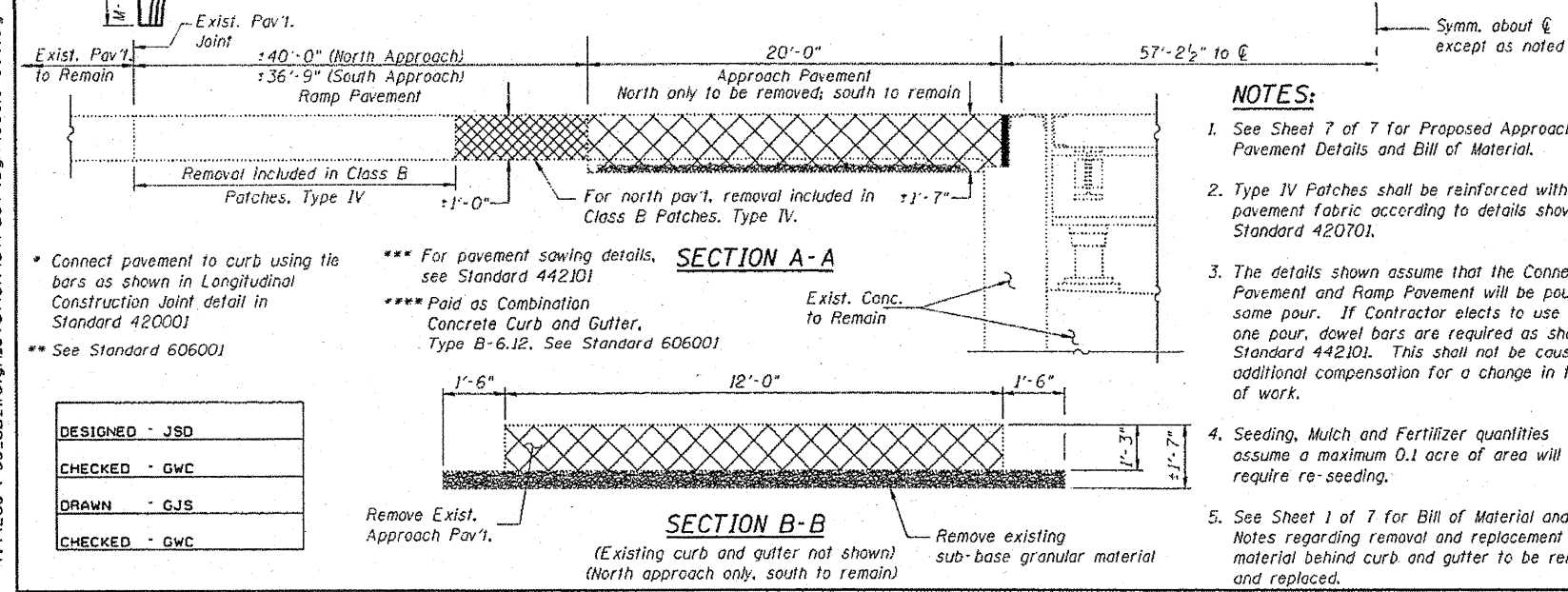
STATE OF ILLINOIS
DEPARTMENT OF TRANSPORTATION



EXISTING PLAN



PROPOSED PLAN



NOTES:

- See Sheet 7 of 7 for Proposed Approach Pavement Details and Bill of Material.
- Type IV Patches shall be reinforced with pavement fabric according to details shown in Standard 420701.
- The details shown assume that the Connector Pavement and Ramp Pavement will be poured in the same pour. If Contractor elects to use more than one pour, dowel bars are required as shown in Standard 442101. This shall not be cause for additional compensation for a change in the scope of work.
- Seeding, Mulch and Fertilizer quantities assume a maximum 0.1 acre of area will require re-seeding.
- See Sheet 1 of 7 for Bill of Material and General Notes regarding removal and replacement of material behind curb and gutter to be removed and replaced.

BILL OF MATERIAL

Item	Unit	Total
Seeding, Class 2A	Acre	0.1
Nitrogen Fertilizer Nutrient	Pound	9
Phosphorus Fertilizer Nutrient	Pound	9
Potassium Fertilizer Nutrient	Pound	9
Mulch, Method 2	Acre	0.1
Stabilized Sub-base 4"	Sq. Yd.	124
Protective Coat	Sq. Yd.	130
Pavement Removal	Sq. Yd.	8
Combination Curb and Gutter Removal	Foot	162
Approach Slab Removal	Sq. Yd.	27
Class B Patches, Type IV, 12"	Sq. Yd.	95
Pavement Fabric	Sq. Yd.	95
Saw Cuts	Foot	48
Combination Concrete Curb and Gutter, Type B-6.12	Foot	58

Item	Unit	Total
Combination Concrete Curb and Gutter, Type M-2.12	Foot	105
Aggregate Subgrade 12" Special	Sq. Yd.	128
Dowel Bars 1 1/2"	Each	20
Tie Bars 3/4"	Each	78

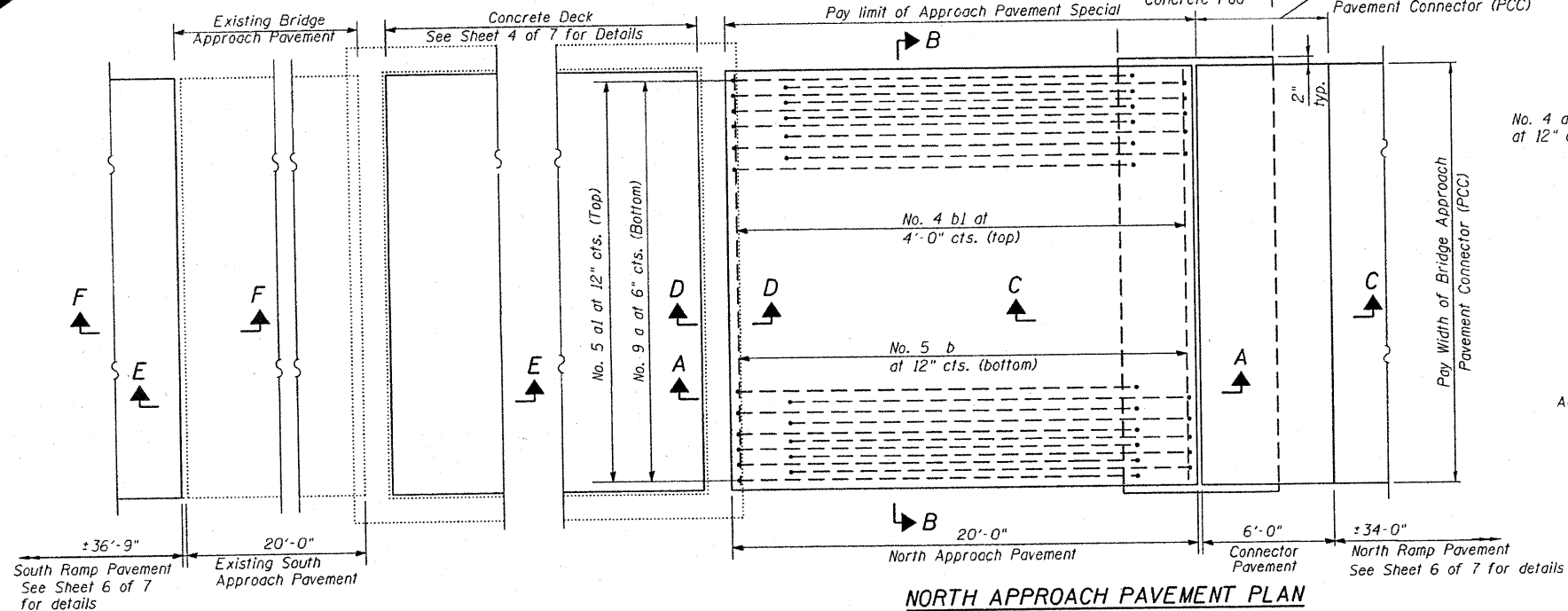
APPROACH AND RAMP PAVEMENT REMOVAL
PLAN AND DETAILS
BOLINGBROOK WEIGH STATION (SB)

DESIGNED - JSD
CHECKED - GWC
DRAWN - GJS
CHECKED - GWC

LOCHNER
H.W. LOCHNER, INC.
CONSULTING ENGINEERS & PLANNERS
20 NORTH WACKER DRIVE SUITE 1200
CHICAGO, IL 60606

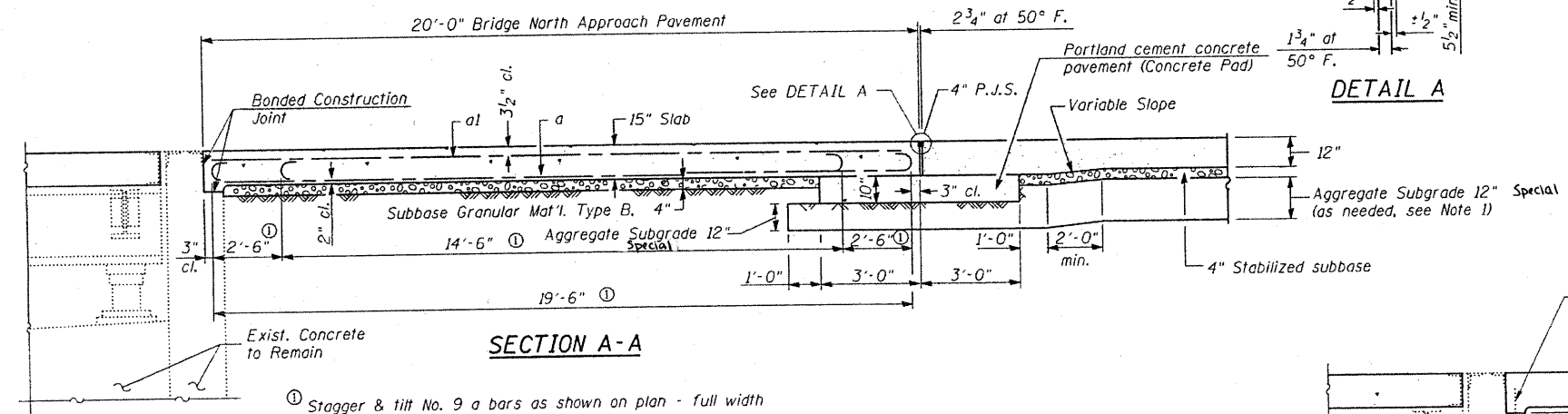
SHEET NO. 6 7 SHEETS	F.A.I. RTE.	SECTION	COUNTY	TOTAL SHEETS	SHEET NO.
	55	99-1-TWS-I-5	WILL	13	9
			CONTRACT NO. 60K43		
FED. ROAD DIST. NO. 1 [ILLINOIS] FED. AID PROJECT					

STATE OF ILLINOIS
DEPARTMENT OF TRANSPORTATION

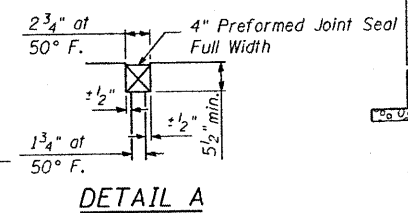


NORTH APPROACH PAVEMENT PLAN

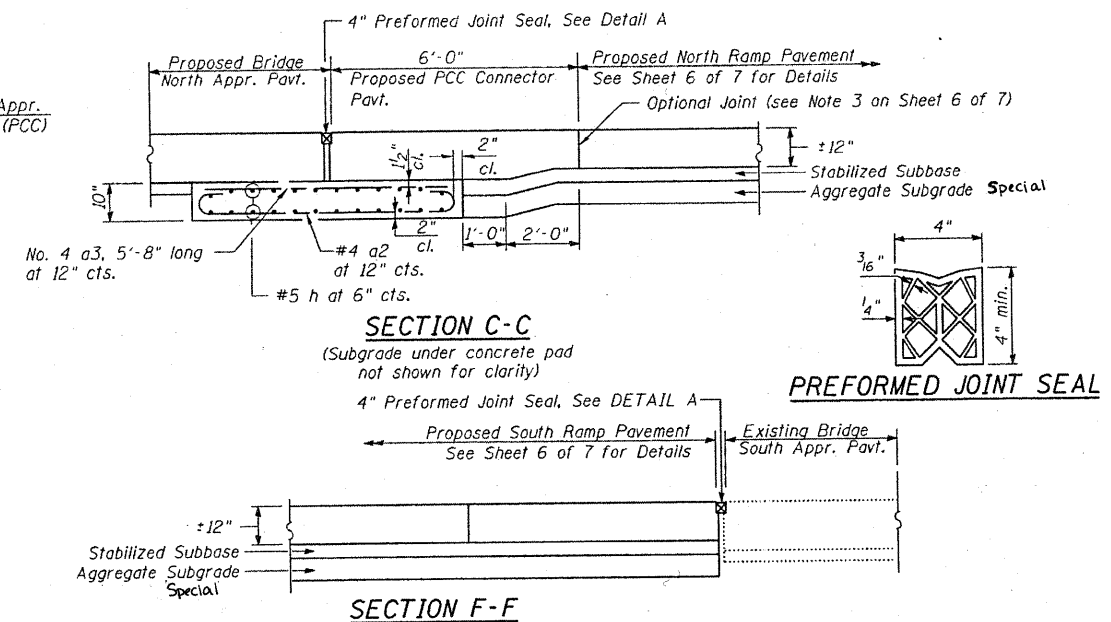
SOUTH APPROACH PAVEMENT PLAN



SECTION A-A



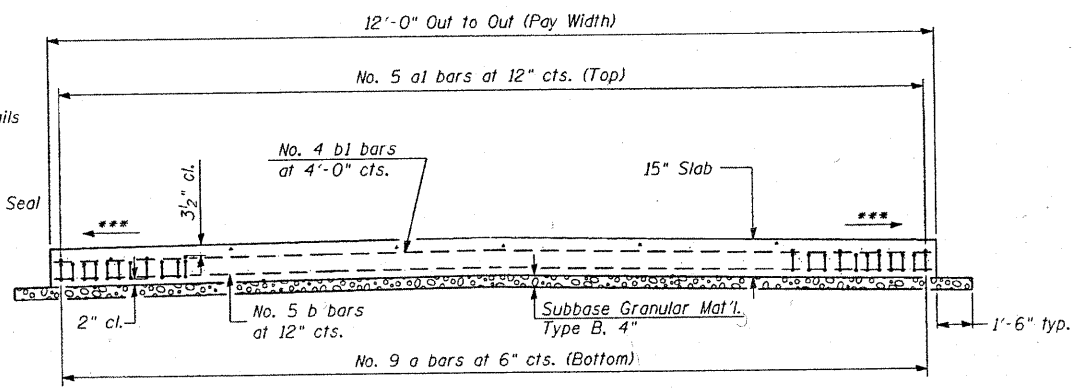
DETAIL A



SECTION C-C

SECTION F-F

PREFORMED JOINT SEAL



SECTION B-B

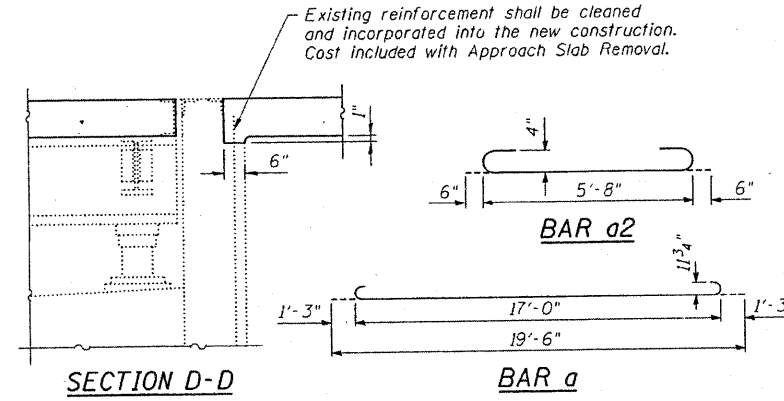
BILL OF MATERIAL

Item	Unit	Total
Sub-base Granular Material, Type B 4"	Sq. Yd.	28
Bridge Approach Pavement Connector (PCC)	Sq. Yd.	8
Bridge Approach Pavement (Special)	Sq. Yd.	27
Aggregate Subgrade 12" Special	Sq. Yd.	7

NOTES

- Subgrade shall be Aggregate Subgrade 12" Special unless specified otherwise by the Engineer in the field.
- Approach pavement reinforcement included with the cost of Approach Pavement Special.
- See Sheet 6 of 7 for removal details and quantities.

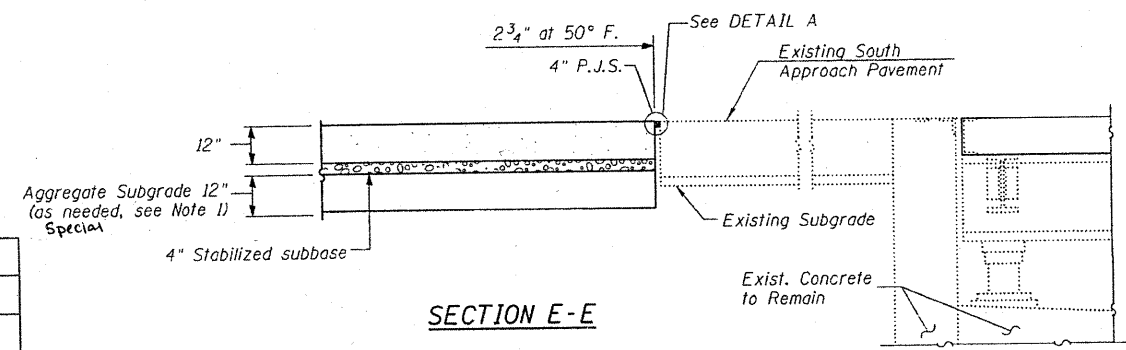
APPROACH PAVEMENT PLAN AND DETAILS
BOLINGBROOK WEIGH STATION (SB)



SECTION D-D

BAR a2

BAR a



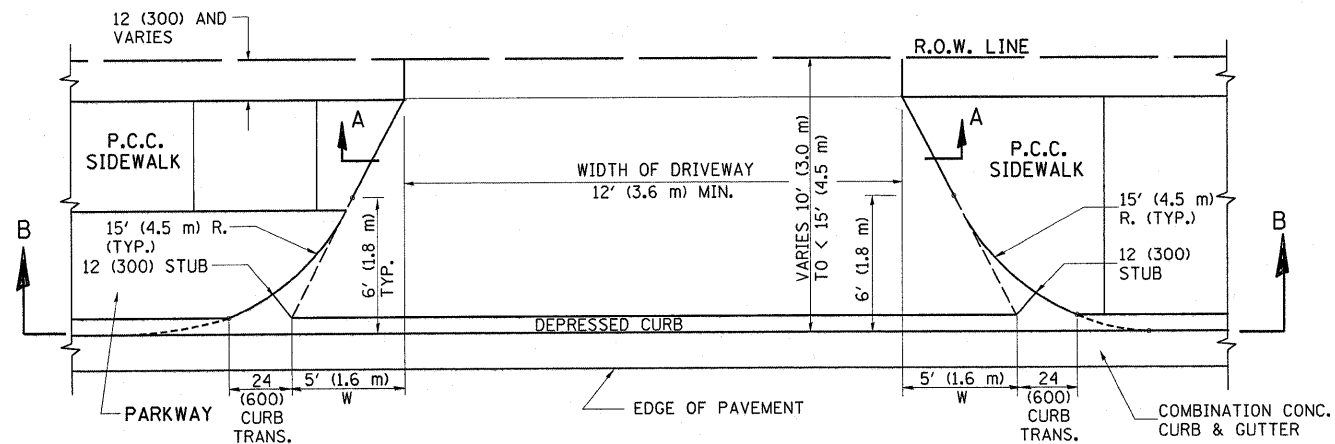
SECTION E-E

DESIGNED - JSD
CHECKED - GWS
DRAWN - GJS
CHECKED - GWS

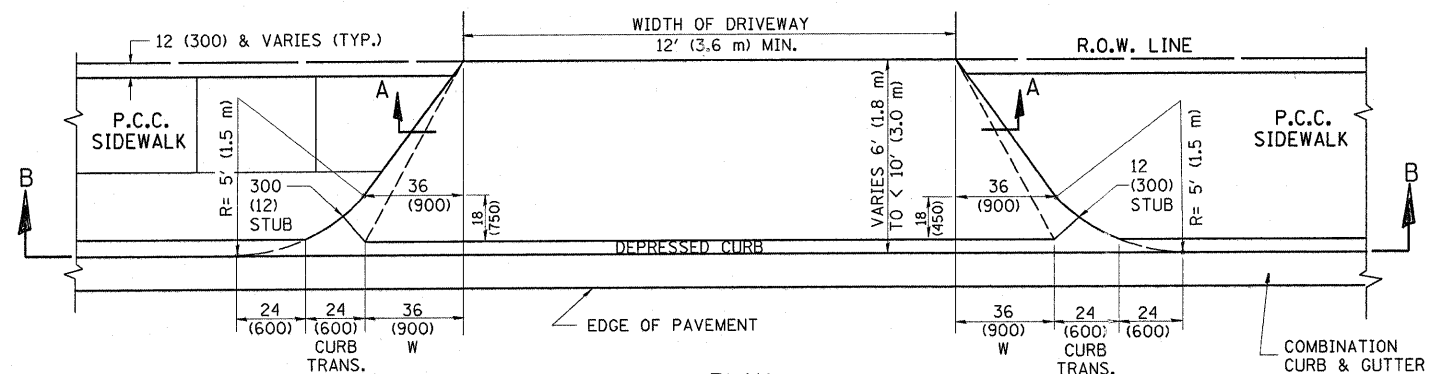
LOCHNER
H.W. LOCHNER, INC.
CONSULTING ENGINEERS & PLANNERS
20 NORTH WACKER DRIVE SUITE 1200
CHICAGO, IL 60606

SHEET NO. 7	F.A.I. RTE. 55	SECTION 99-1-TWS-1-5	COUNTY WILL	TOTAL SHEETS 13	SHEET NO. 10
7 SHEETS					
CONTRACT NO. 60K43					
FED. ROAD DIST. NO. 1 ILLINOIS FED. AID PROJECT					

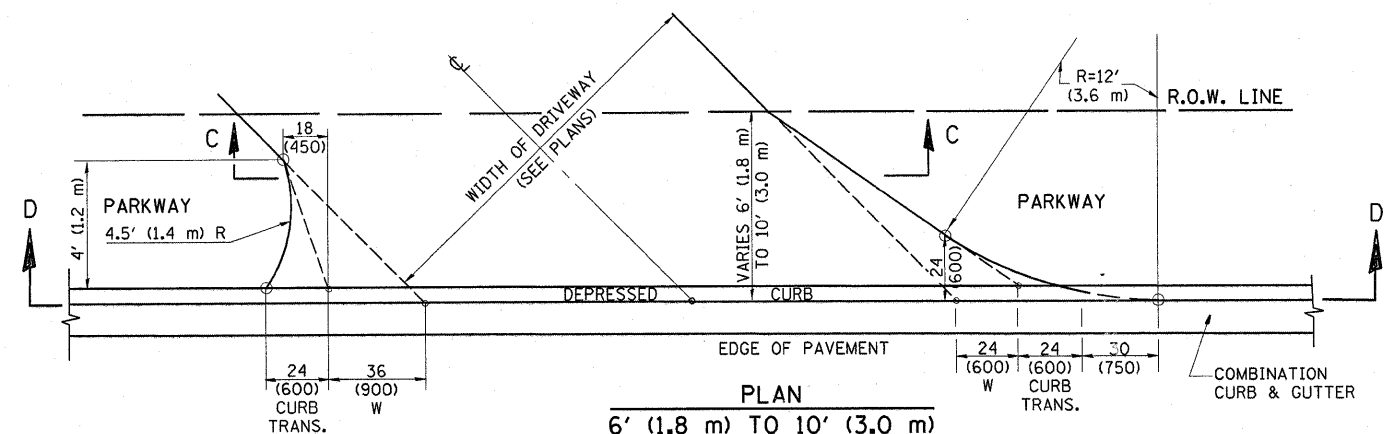
T:\4265-1-55-SB_Weigh_Station\Struct\dn\60G16-007.dgn



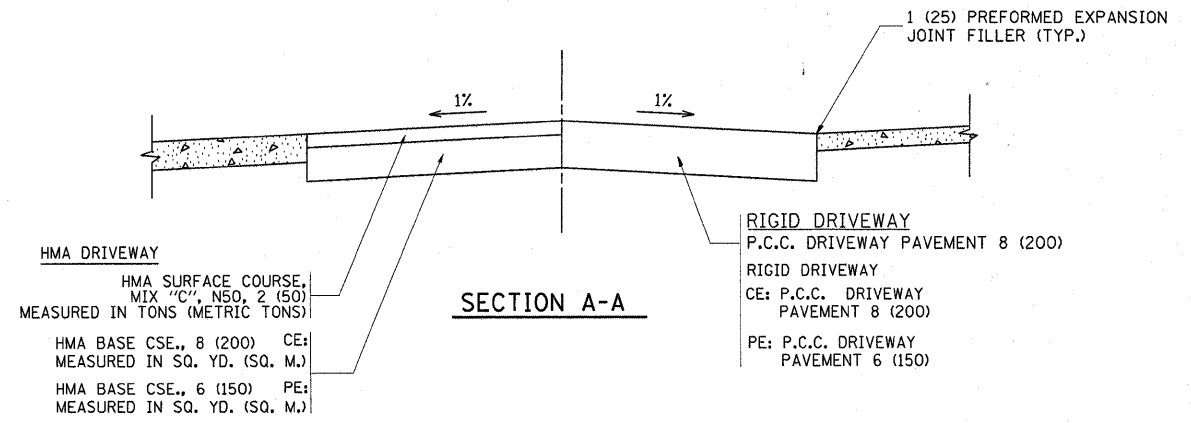
PLAN
10' (3.0 m) TO < 15' (4.5 m)



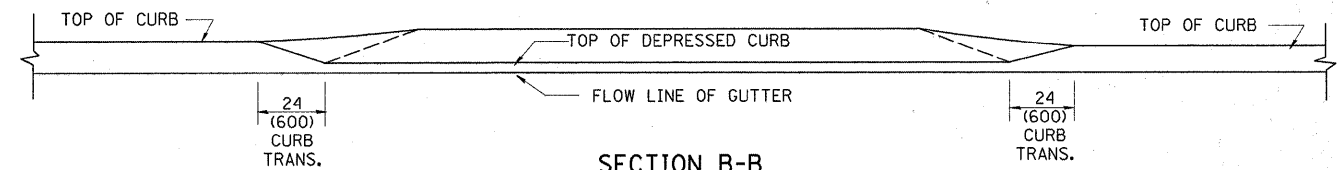
PLAN
6' (1.8 m) TO < 10' (3.0 m)



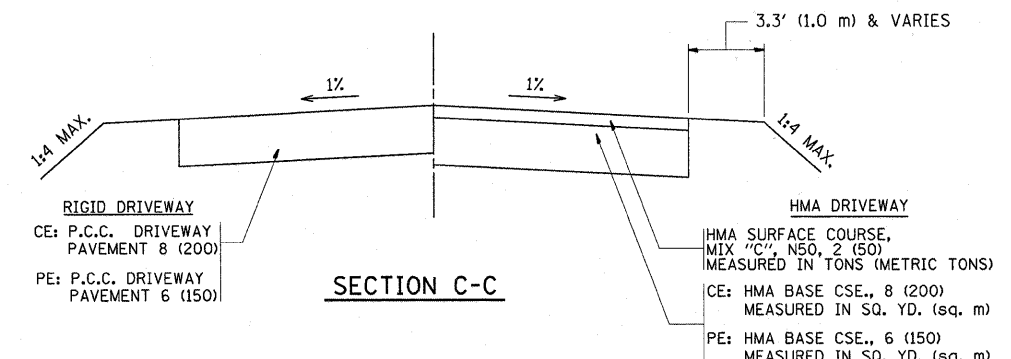
PLAN
6' (1.8 m) TO 10' (3.0 m)



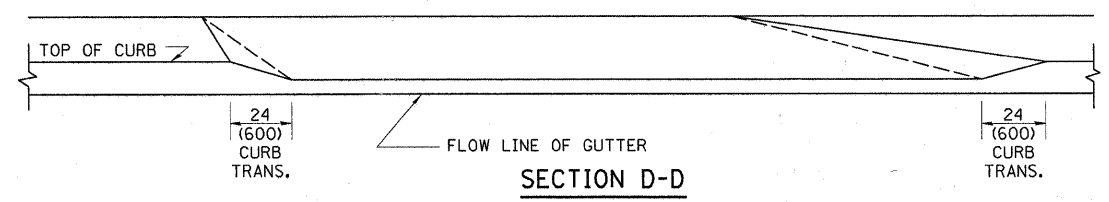
SECTION A-A



SECTION B-B



SECTION C-C



SECTION D-D

GENERAL NOTES

DRIVEWAY SLOPES, LOCATIONS, & GEOMETRIC LAYOUT SHALL BE IN ACCORDANCE WITH THE LATEST EDITION OF THE "HANDBOOK FOR POLICY ON PERMITS FOR ACCESS DRIVEWAYS TO STATE HIGHWAYS". FOR FURTHER LAYOUT REQUIREMENTS, REFER TO ILLUSTRATION 10 IN THE PERMIT HANDBOOK. WHERE SIDEWALKS EXIST, DRIVEWAYS SHALL BE REPLACED WITH RIGID PAVEMENT. WHERE NO SIDEWALKS EXIST, DRIVEWAYS SHALL BE REPLACED IN KIND. SIDEWALK CROSS SLOPE THRU DRIVEWAY AREA TO BE A MAXIMUM OF 1:50.

WHEN THE DISTANCE BETWEEN R.O.W. AND THE BACK OF CURB IS EQUAL TO OR LESS THAN 8' (2.4 m), THE P.C.C. SIDEWALK SHALL EXTEND TO THE BACK OF CURB.

THE RESIDENT ENGINEER SHALL CONTACT THE TRAFFIC PERMIT OFFICE AT 847/705-4131 FOR ANY QUESTIONS ON DRIVEWAYS SHOWN IN THE PLANS; SPECIFICALLY IN REFERENCE TO ADDITIONAL AND/OR RELOCATION/REMOVAL OF A DRIVEWAY.

COMBINATION CONCRETE CURB & GUTTER SHALL BE MEASURED STRAIGHT ACROSS THE DRIVEWAY. NO ADDITIONAL COMPENSATION WILL BE ALLOWED FOR THE CURB & GUTTER TRANSITION.

THE 1 (25) PREFORMED EXPANSION JOINT FILLER WILL NOT BE PAID SEPARATELY, BUT SHALL BE CONSIDERED INCLUDED IN THE COST OF THE P.C.C. DRIVEWAY PAVEMENT OR P.C.C. SIDEWALK.

"W" VARIES FROM 36 (900) TO 5' (1.5 m) PROPORTIONAL TO THE LENGTH (L), FROM 6' (1.8 m) TO 10' (3 m).

ALL DIMENSIONS ARE IN INCHES (MILLIMETERS) UNLESS OTHERWISE NOTED.

FILE NAME =	USER NAME = rosierj	DESIGNED - R. SHAH	REVISED - T. HOLTZ 04-08-97
cd:\pw\work\PIWIDOT\ROSIERE.JM\0184552\01.stsd.dgn		DRAWN -	REVISED - M. GOMEZ 04-06-01
PLOT SCALE = 50.0000' / IN.		CHECKED -	REVISED - P. LaFLEUR 04-15-03
PLOT DATE = 3/20/2010		DATE - 11-06-95	REVISED - R. BORO 01-01-07

STATE OF ILLINOIS
DEPARTMENT OF TRANSPORTATION

DRIVEWAY DETAILS
DISTANCE BETWEEN ROW AND FACE OF CURB < 15' (4.5 m)

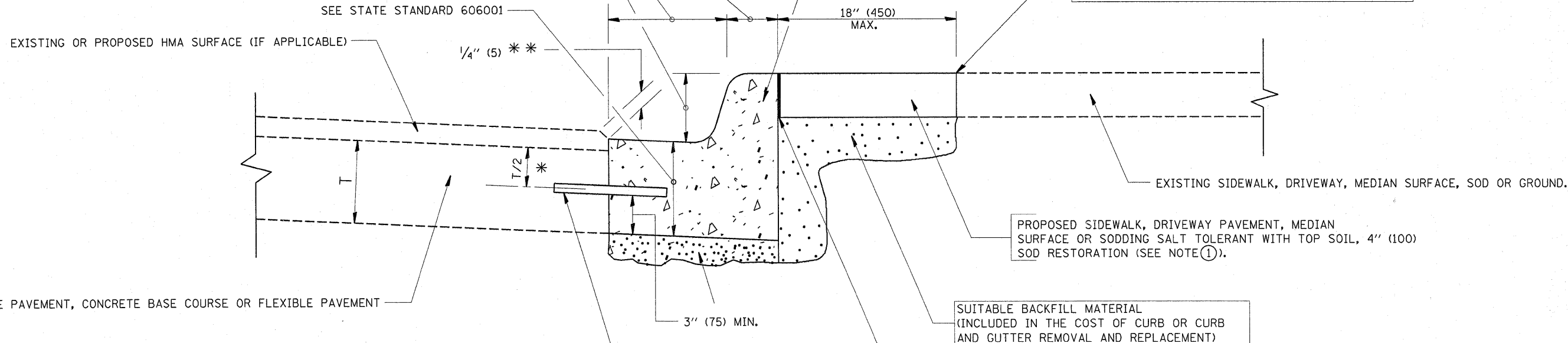
SCALE: NONE SHEET NO. 1 OF 1 SHEETS STA. TO STA.

F.A.I. RTE.	SECTION	COUNTY	TOTAL SHEETS	SHEET NO.
55	99-1-TWS-1-5	WILL	13	11
BD400-02 (BD-02)			CONTRACT NO. 60K43	
FED. ROAD DIST. NO. 1 ILLINOIS FED. AID PROJECT				

VARIABLE - TO MEET EXISTING DIMENSIONS AND FIELD CONDITIONS (SEE NOTE ②)

PROP. CONC. CURB OR CURB AND GUTTER REPLACEMENT IN ACCORDANCE WITH STATE STANDARD 606001. (SEE NOTE ②)

SAW CUT FULL DEPTH - INCLUDED IN THE COST OF SIDEWALK, DRIVEWAY OR MEDIAN SURFACE REMOVAL PAY ITEM.



EXISTING SIDEWALK, DRIVEWAY, MEDIAN SURFACE, SOD OR GROUND.

PROPOSED SIDEWALK, DRIVEWAY PAVEMENT, MEDIAN SURFACE OR SODDING SALT TOLERANT WITH TOP SOIL, 4" (100) SOD RESTORATION (SEE NOTE ①).

SUITABLE BACKFILL MATERIAL (INCLUDED IN THE COST OF CURB OR CURB AND GUTTER REMOVAL AND REPLACEMENT)

PROPOSED 3/4" (20) PREFORMED EXPANSION JOINT AT CONCRETE SIDEWALKS, DRIVEWAYS, AND MEDIANS. (INCLUDED IN THE COST OF CURB OR CURB AND GUTTER REMOVAL AND REPLACEMENT.)

UNSUITABLE SUB-BASE MATERIAL TO BE REMOVED, IF DIRECTED BY THE ENGINEER, SHALL BE REPLACED WITH EITHER SUB-BASE GRANULAR MATERIAL, TYPE B OR ADDITIONAL THICKNESS OF CONCRETE.

REMOVAL AND REPLACEMENT 4" (100) OR LESS IS INCLUDED IN THE COST OF CURB OR CURB AND GUTTER REMOVAL AND REPLACEMENT.

REMOVAL AND REPLACEMENT IN EXCESS OF 4" (100) WILL BE PAID FOR IN ACCORDANCE WITH ARTICLE 109.04 OF THE STANDARD SPECIFICATIONS.

PROPOSED #6 (20) EPOXY COATED TIE BARS 24" (600) LONG AT 24" (600) CENTERS WILL NOT BE PAID FOR SEPARATELY. DELETE EPOXY COATED TIE BARS IF EXISTING TIE BARS ARE USUABLE AS DETERMINED BY THE ENGINEER. (SEE NOTE ③).

BASIS OF PAYMENT:

THIS WORK WILL BE PAID FOR AT THE CONTRACT UNIT PRICE PER FOOT (METER) FOR "CURB REMOVAL AND REPLACEMENT" OR "COMBINATION CONCRETE CURB AND GUTTER REMOVAL AND REPLACEMENT".

* 3" (75) MINIMUM FROM TOP AND BOTTOM OF THE CONCRETE PAVEMENT OR BASE COURSE.

* * IF THE FINAL SURFACE OF THE PAVEMENT IS CONCRETE, THE GUTTER IS TO BE FLUSH WITH THE PAVEMENT.

NOTE: ① SIDEWALK, DRIVEWAY PAVEMENT OR MEDIAN SURFACE SHALL BE SIMILAR TO THE MATERIAL BEING REMOVED AND WILL BE PAID FOR SEPARATELY.

SODDING, SALT TOLERANT AND TOP SOIL, FURNISH AND PLACE 4" WILL BE PAID FOR SEPARATELY,

② FERTILIZER FOR THE PLACEMENT OF THE SOD IS NOT REQUIRED

③ CURB OR CURB AND GUTTER REPLACEMENT SHALL MATCH THE SHAPE OF THE EXISTING CURB OR CURB AND GUTTER UNLESS OTHERWISE SPECIFIED.

④ FOR CURB OR CURB AND GUTTER REMOVAL AND REPLACEMENT ADJACENT TO FLEXIBLE PAVEMENT DELETE EPOXY COATED TIE BARS.

⑤ LONGITUDINAL BARS, IF ENCOUNTERED IN THE EXISTING CURB OR CURB AND GUTTER, ARE NOT TO BE REPLACED. CUTTING AND REMOVING LONGITUDINAL BARS SHALL BE INCLUDED IN THE COST OF CURB OR CURB AND GUTTER REMOVAL AND REPLACEMENT.

⑥ THE COST OF HMA SURFACE REMOVAL IN THE EXISTING GUTTER FLAG SHALL BE INCLUDED IN THE COST OF THE CURB AND GUTTER REMOVAL AND REPLACEMENT.

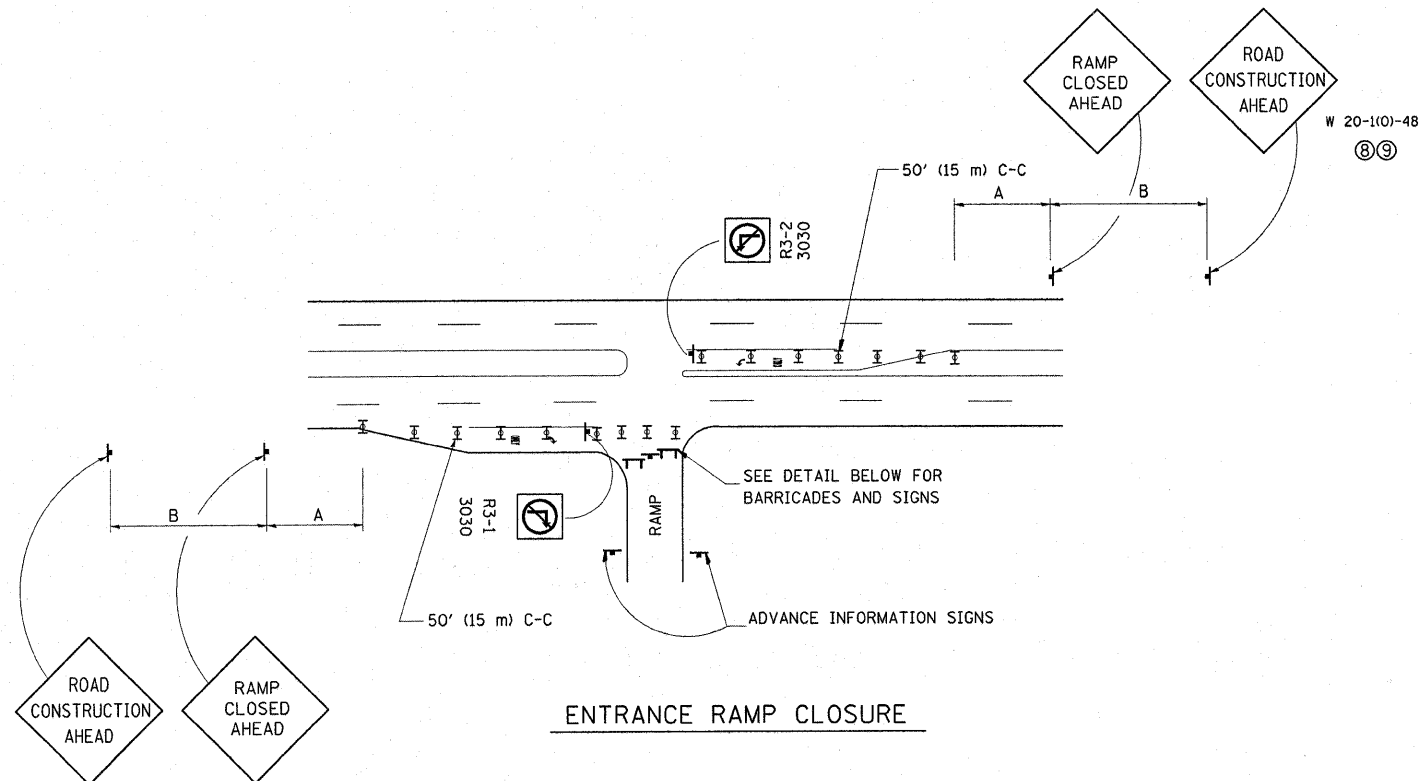
⑦ THE REMOVAL AND REPLACEMENT OF THE EXISTING CURB OR CURB AND GUTTER SHALL BE DONE IN ACCORDANCE WITH THE APPLICABLE PORTIONS OF SECTION 440 AND 606 OF THE STANDARD SPECIFICATIONS.

⑧ THE LOCATIONS OF REMOVAL AND REPLACEMENT OF EXISTING CURB OR CURB AND GUTTER SHALL BE DETERMINED BY THE RESIDENT ENGINEER AT THE TIME OF CONSTRUCTION.

CURB OR CURB AND GUTTER REMOVAL AND REPLACEMENT

ALL DIMENSIONS ARE IN INCHES (MILLIMETERS) UNLESS OTHERWISE SHOWN.

FILE NAME =	USER NAME = rosier,jm	DESIGNED - A. HOUSEH	REVISED - R. SHAH 10-03-96	STATE OF ILLINOIS DEPARTMENT OF TRANSPORTATION	CURB OR CURB AND GUTTER REMOVAL AND REPLACEMENT			F.A.I. RTE.	SECTION	COUNTY	TOTAL SHEETS	SHEET NO.
ct\pw_work\PW100T\ROSIERE.JM\d0184552\D	stStd.dgn	DRAWN -	REVISED - A. ABBAS 03-21-97					55	99-1-TWS-1-5	WILL	13	12
	PLOT SCALE = 50.0000' / IN.	CHECKED -	REVISED - M. GOMEZ 01-22-01		BD600-06 (BD-24)			CONTRACT NO. 60K43				
	PLOT DATE = 3/20/2010	DATE - 03-11-94	REVISED - R. BORO 12-15-09		SCALE: NONE	SHEET NO. 1 OF 1 SHEETS	STA. TO STA.	FED. ROAD DIST. NO. 1 (ILLINOIS) FED. AID PROJECT				



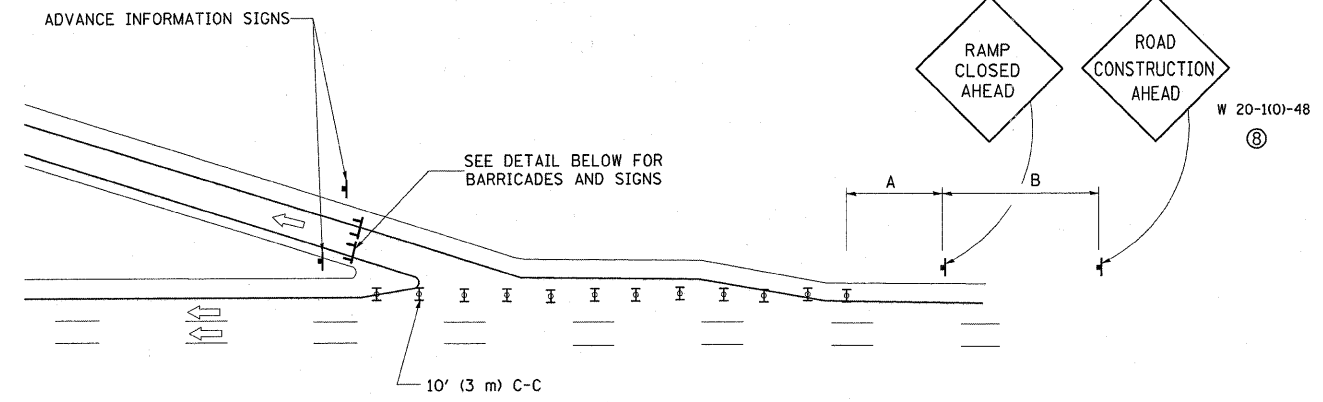
ENTRANCE RAMP CLOSURE

SIGN SPACING TABLE

FACILITY	DISTANCE BETWEEN SIGNS	
	A	B
EXPRESSWAY >24 HOURS	1000' (300 m)	1500' (450 m)
EXPRESSWAY ≤24 HOURS	500' (150 m)	500' (150 m)
ARTERIAL ≥45 MPH	350' (100 m)	350' (100 m)
ARTERIAL <45 MPH	150' (45 m)	150' (45 m)

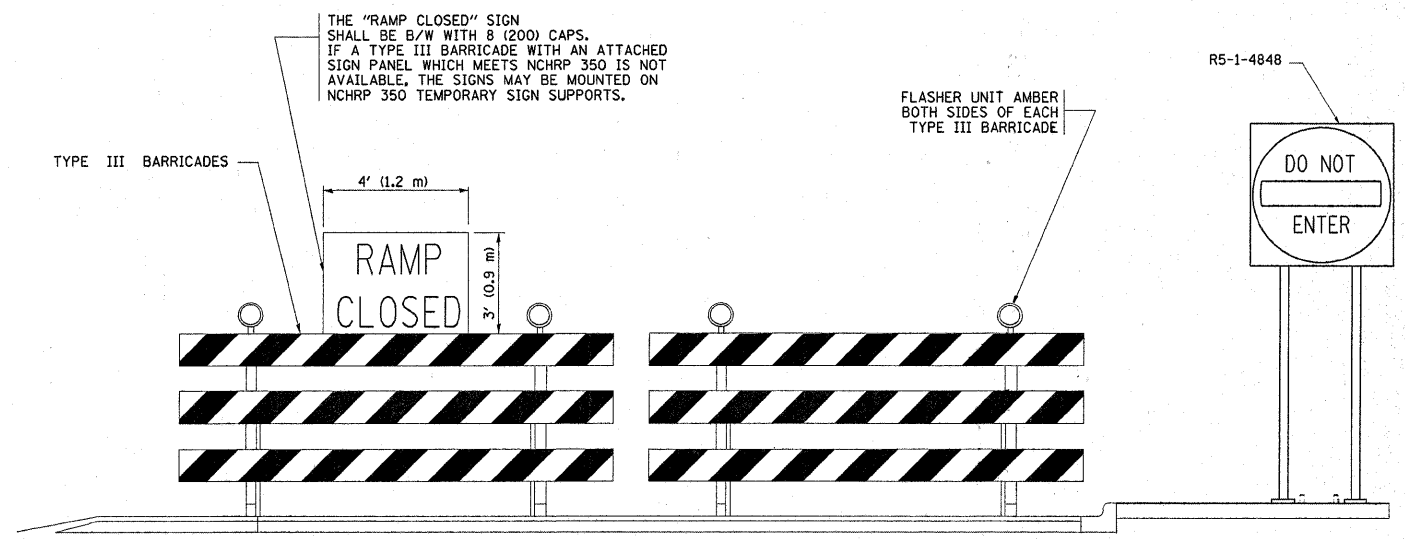
DISTANCES MAY BE SHORTENED DEPENDING UPON THE PROXIMITY OF ADJACENT RAMPS OR INTERSECTIONS.

W 20-101-48 (8)

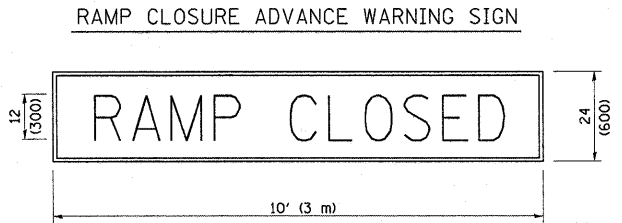


EXIT RAMP CLOSURE

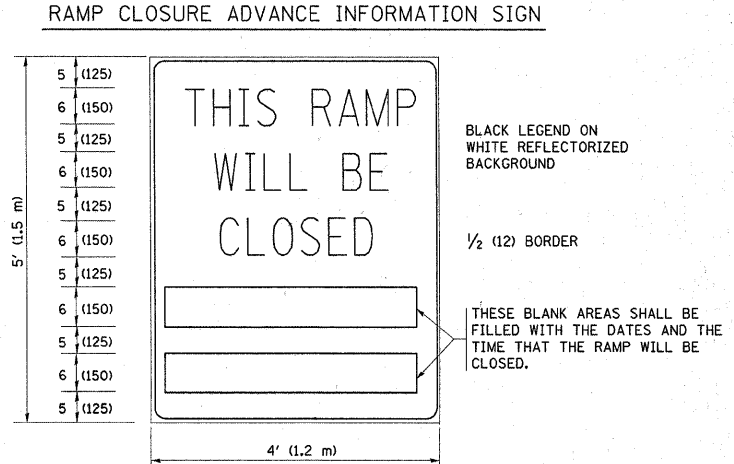
- SYMBOLS**
- ▬ TYPE II BARRICADE, DRUM OR VERTICAL BARRICADE WITH STEADY BURN MONO-DIRECTIONAL LIGHT
 - ▬ TYPE III BARRICADE WITH FLASHING LIGHT



DETAIL FOR REQUIRED BARRICADES & SIGNS



BLACK LEGEND ON ORANGE REFLECTORIZED BACKGROUND
1 (25) BORDER
THESE SIGNS ARE REQUIRED ON ALL THE EXIT GUIDE SIGNS FOR THE CLOSED EXIT RAMPS.



THESE SIGNS ARE REQUIRED ON BOTH SIDES OF THE RAMP, MINIMUM OF 1 WEEK IN ADVANCE OF THE CLOSURE.

GENERAL NOTES:

- ① CONES MAY BE SUBSTITUTED FOR DRUMS OR TYPE II BARRICADES DURING DAY OPERATIONS. CONES SHALL BE A MINIMUM OF 28 (700) HIGH.
- ② STEADY BURN LIGHTS WILL NOT BE REQUIRED FOR DAY OPERATIONS.
- ③ A FLAGGER SHALL BE POSITIONED AT EACH CLOSED RAMP THAT IS OPEN TO CONSTRUCTION VEHICLES.
- ④ ALL ROUTE MARKERS AND TRAILBLAZER ASSEMBLIES WHICH DIRECT MOTORISTS TO A CLOSED ENTRANCE RAMP SHALL BE COVERED.
- ⑤ THE SIGNING AND BARRICADING WHICH IS REQUIRED BY THIS DETAIL SHALL BE INCLUDED IN THE COST OF TRAFFIC CONTROL AND PROTECTION (EXPRESSWAYS).
- ⑥ AUTHORIZATION FROM THE DISTRICT'S BUREAU OF TRAFFIC IS REQUIRED FOR ALL RAMP CLOSURES.
- ⑦ THE RAMP CLOSURE ADVANCE INFORMATION SIGNS SHALL BE ERECTED IF THE CLOSURE TIME EXCEEDS TWENTY-FOUR (24) HOURS. ADDITIONAL ADVANCE WARNING SIGNS ON EXIT GUIDE SIGNING WILL BE REQUIRED FOR EXIT RAMP CLOSURES THAT EXCEED TWENTY-FOUR (24) HOURS IN LENGTH.
- ⑧ ROAD CONSTRUCTION AHEAD SIGNS MAY BE OMITTED WHEN THIS DETAIL IS USED IN CONJUNCTION WITH OTHER TRAFFIC CONTROL THAT ALREADY INCLUDES A ROAD CONSTRUCTION AHEAD SIGN.
- ⑨ ARTERIAL ROAD CONSTRUCTION AHEAD SIGNS MAY BE OMITTED ON CLOSURES LESS THAN 24 HOURS IN DURATION.

ALL DIMENSIONS ARE IN INCHES (MILLIMETERS) UNLESS OTHERWISE SHOWN.

FILE NAME =	USER NAME = rosierj	DESIGNED - DWS	REVISED - DWS/JAF 12-02
ca:\pwork\FW100T\ROSIEREJM\0184552\Drawings\std.dgn		DRAWN -	REVISED - JAF 02-06
PLOT SCALE = 50.0000' / IN.		CHECKED -	REVISED - SPB 01-07
PLOT DATE = 3/20/2010		DATE - 02-83	REVISED - SPB 12-09

STATE OF ILLINOIS
DEPARTMENT OF TRANSPORTATION

FREeway ENTRANCE AND EXIT RAMP CLOSURE DETAILS			
SCALE: NONE	SHEET NO. 1 OF 1 SHEETS	STA. TO STA.	

F.A.I. RTE. 55	SECTION 99-1-TWS-1-5	COUNTY WILL	TOTAL SHEETS 13	SHEET NO. 13
TC-08		CONTRACT NO. 60K43		
FED. ROAD DIST. NO. 1 ILLINOIS FED. AID PROJECT				