

DETAIL B

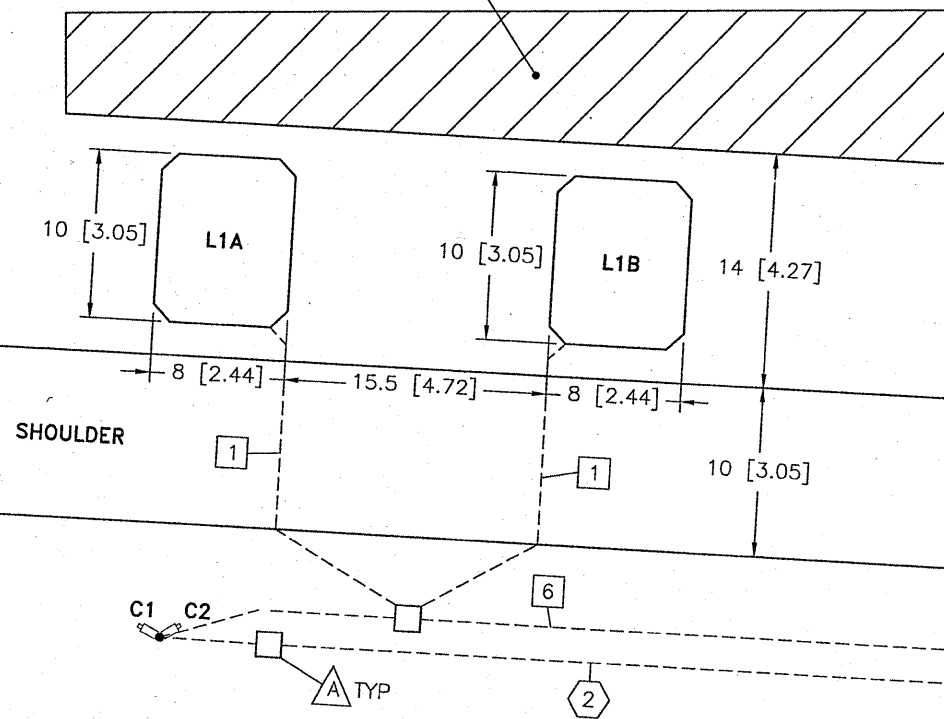
970+20

I-80 EB →

I-80 EB →

RAMP TO
STATIC SCALE →

PAINTED GORE



SIGNAL CONDUITS:

- 1 1" CONDUIT
1-2C 14AWG (LOOP WIRE)
- 2 2" CONDUIT
1-3PR 20AWG (SLC LEAD)
2-2C 18AWG (OFF-SCALE LEAD)
- 3 1" CONDUIT
1-RG58 COAXIAL CABLE (PIEZO LEAD)
- 4 2" CONDUIT
2-2C 18AWG (LOOP LEADS)
1-RG58 COAXIAL CABLE (PIEZO LEAD)
1-3PR 20AWG (SLC LEAD)
2-2C 18AWG (OFF-SCALE LEAD)
1-TEMPERATURE SENSOR LEAD T1
- 5 1" CONDUIT
1-TEMPERATURE SENSOR LEAD T1
- 6 2" CONDUIT
1-12 STRAND MULTIMODE FIBER OPTIC CABLE
1-2C 14AWG (LOOP WIRE)
- 7 2" CONDUIT
1-12 STRAND MULTIMODE FIBER OPTIC CABLE
- 8 2" CONDUIT
1-12 STRAND MULTIMODE FIBER OPTIC CABLE
3-2C 14AWG (LOOP WIRE)
- 9 2" CONDUIT
1-12 STRAND MULTIMODE FIBER OPTIC CABLE
2-2C 14AWG (LOOP WIRE)
- 10 2" CONDUIT
1-2C 18AWG (OVERHEIGHT LEAD)

POWER CONDUITS:

- 1 E1 ENCLOSURE
- 2 2" CONDUIT
1-2C + GND 6AWG (POLE MOUNT CAMERA BOX POWER)
- 3 2" CONDUIT
1-3C + GND 14AWG (LCS POWER)
- 4 2" CONDUIT
2-3C + GND 14AWG (LCS POWER)
- 5 2" CONDUIT
2-2C + GND (OVERHEIGHT POWER)
- 6 2" CONDUIT
1-2C + GND (OVERHEIGHT POWER)

FAI RTE	SECTION	COUNTY	TOTAL SHEETS	SHEET NO.
80	99-5-1-TWS-I	WILL	16	5
STA.	STA.	ILLINOIS	FED. AID PROJECT	
CONTRACT NO. 60K45				

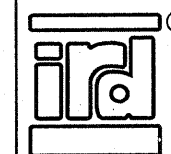
NOTES:

△ PULL BOX.

REV.	DESCRIPTION	DWN/DSN	APPR.	APPR.	DATE
1	PRELIMINARY RELEASE	JGI/Sab	Sab	RCz	Aug 5/09

CONFIDENTIAL

THIS DOCUMENT CONTAINS INFORMATION PROPRIETARY TO IRD AND IS THEREFORE NOT TO BE DISCLOSED TO OTHERS OR USED FOR PRODUCTION WITHOUT WRITTEN PERMISSION FROM INTERNATIONAL ROAD DYNAMICS INC.



NOT TO SCALE

SIZE: B

DIMENSIONS IN: FEET [m]

**INTERNATIONAL ROAD DYNAMICS INC.
SASKATOON SASKATCHEWAN CANADA**

DWG. TITLE:
**SITE LAYOUT
RAMP WEIGH-IN-MOTION
MOKENA, ILLINOIS I-80 EB**

DWG. No. **MILRWM01** REV.: 1

CAD FILE: MILRWM01.DWG SHEET 2 OF 6