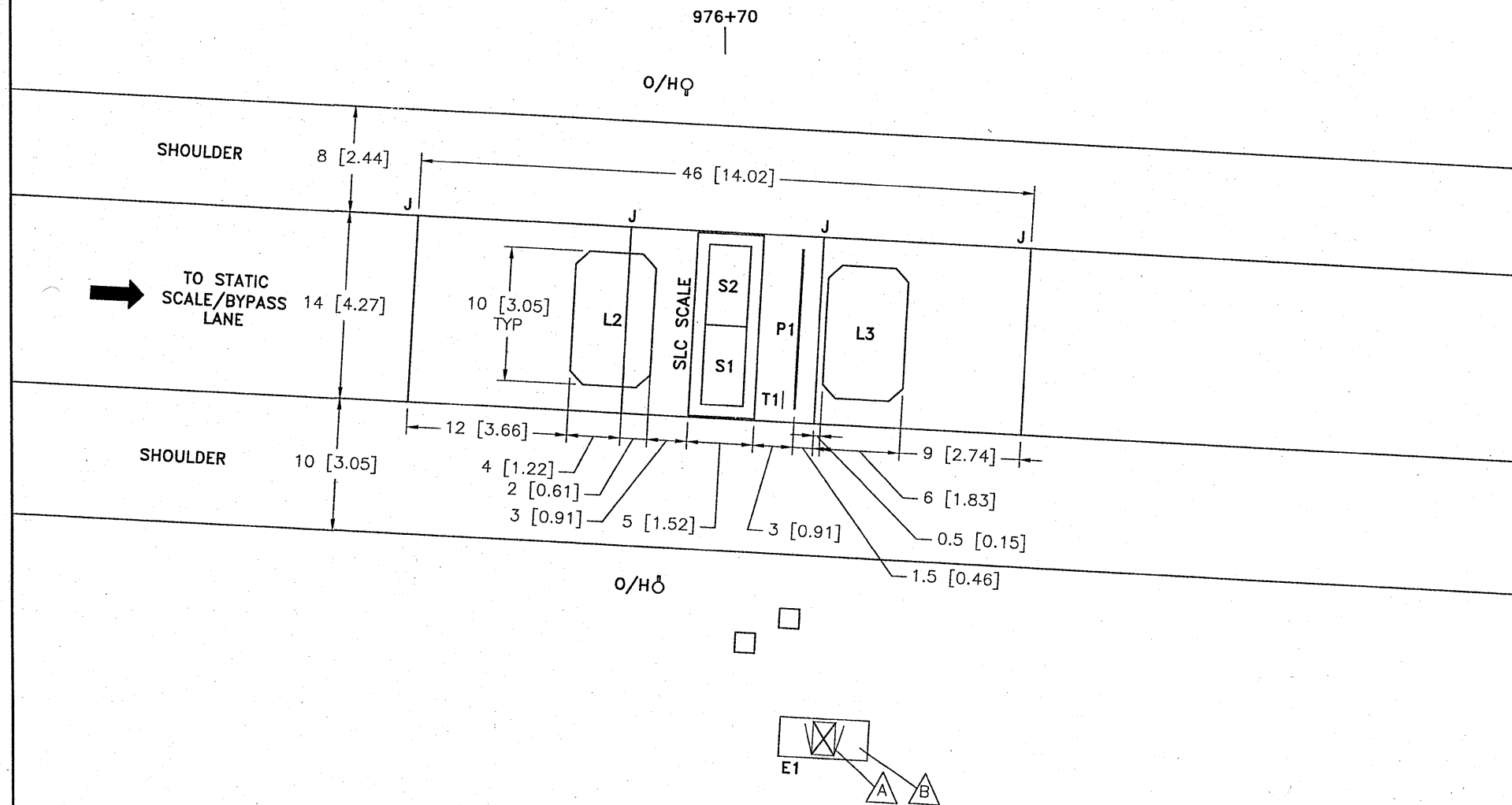


DETAIL C - SENSOR LAYOUT



NOTES:

- CABINET WITH WIM ELECTRONICS.
- CABINET BASE.

FAI RTE	SECTION	COUNTY	TOTAL SHEETS	SHEET NO.
80	99-5-1-TWS-I	WILL	16	6
STA.	STA.			
FED. ROAD DIST. NO.	ILLINOIS	FED. AID PROJECT		

CONTRACT NO. 60K45

REV.	DESCRIPTION	DWN/DSN	APPR.	APPR.	DATE
1	PRELIMINARY RELEASE	JG/Sab	SAb	RCz	Aug 5/09

CONFIDENTIAL
 THIS DOCUMENT CONTAINS INFORMATION PROPRIETARY TO IRD AND IS THEREFORE NOT TO BE DISCLOSED TO OTHERS OR USED FOR PRODUCTION WITHOUT WRITTEN PERMISSION FROM INTERNATIONAL ROAD DYNAMICS INC.

NOT TO SCALE
 SIZE: B
 DIMENSIONS IN: FEET [m]

INTERNATIONAL ROAD DYNAMICS INC.
SASKATOON SASKATCHEWAN CANADA

DWG. TITLE:
**SITE LAYOUT
 RAMP WEIGH-IN-MOTION
 MOKENA, ILLINOIS I-80 EB**

DWG. No. **MILRWM01** REV.: 1
 CAD FILE: MILRWM01.DWG SHEET 3 OF 6