

STATE OF ILLINOIS
DEPARTMENT OF TRANSPORTATION

| | |
|--------------|-----------|
| TOTAL SHEETS | SHEET NO. |
| 77 | 40 |

EAST EDGE OF PAVEMENT

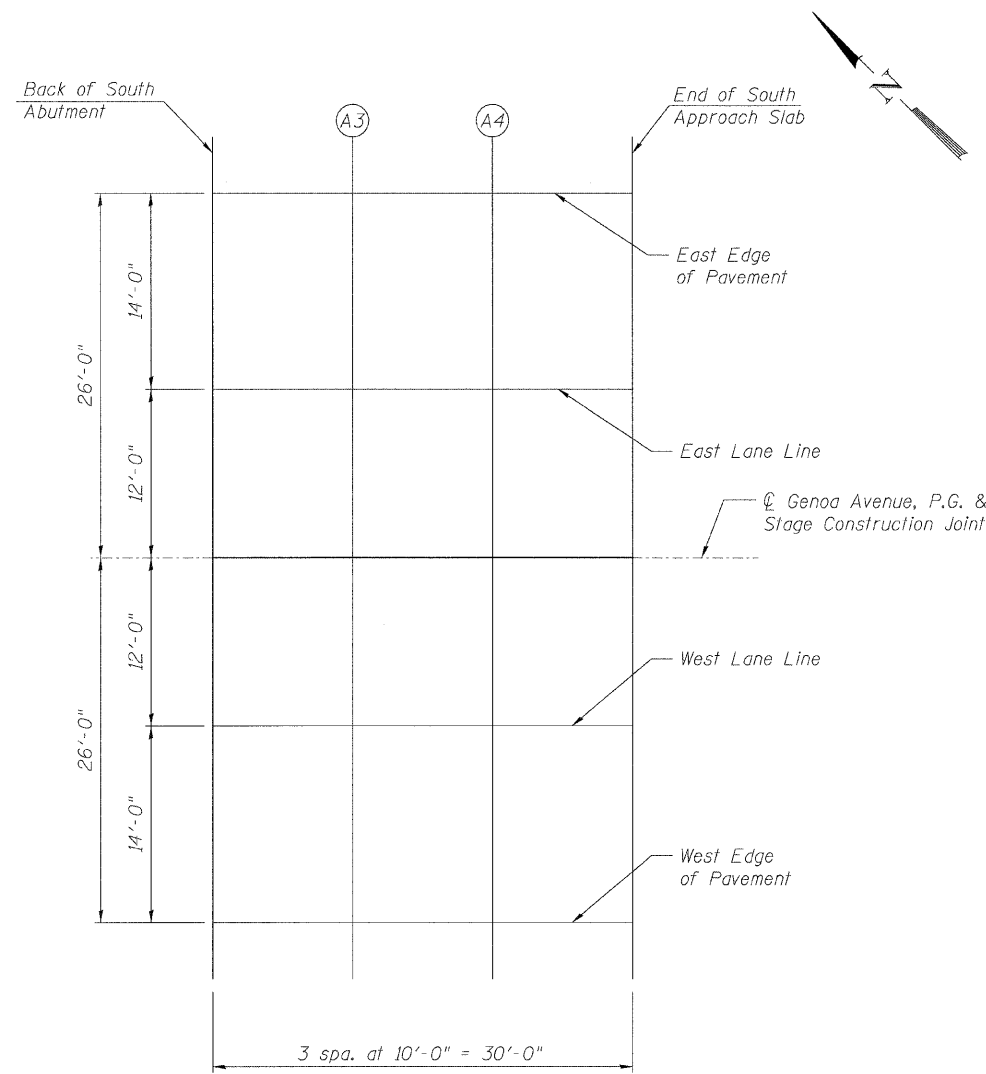
| Location | Station | Offset | Theoretical Grade Elevations |
|-------------------|----------|--------|------------------------------|
| Bk. S. Abut. | 15+41.96 | -26.00 | 610.08 |
| A3 | 15+51.96 | -26.00 | 610.01 |
| A4 | 15+61.96 | -26.00 | 609.93 |
| End S. Appr. Slab | 15+71.96 | -26.00 | 609.85 |

EAST LANE LINE

| Location | Station | Offset | Theoretical Grade Elevations |
|-------------------|----------|--------|------------------------------|
| Bk. S. Abut. | 15+41.96 | -12.00 | 610.37 |
| A3 | 15+51.96 | -12.00 | 610.30 |
| A4 | 15+61.96 | -12.00 | 610.22 |
| End S. Appr. Slab | 15+71.96 | -12.00 | 610.14 |

☉ ROADWAY, P.G. & STAGE CONSTRUCTION JOINT

| Location | Station | Offset | Theoretical Grade Elevations |
|-------------------|----------|--------|------------------------------|
| Bk. S. Abut. | 15+41.96 | 0.00 | 610.56 |
| A3 | 15+51.96 | 0.00 | 610.49 |
| A4 | 15+61.96 | 0.00 | 610.41 |
| End S. Appr. Slab | 15+71.96 | 0.00 | 610.33 |



PLAN

WEST LANE LINE

| Location | Station | Offset | Theoretical Grade Elevations |
|-------------------|----------|--------|------------------------------|
| Bk. S. Abut. | 15+41.96 | 12.00 | 610.37 |
| A3 | 15+51.96 | 12.00 | 610.30 |
| A4 | 15+61.96 | 12.00 | 610.22 |
| End S. Appr. Slab | 15+71.96 | 12.00 | 610.14 |

WEST EDGE OF PAVEMENT

| Location | Station | Offset | Theoretical Grade Elevations |
|-------------------|----------|--------|------------------------------|
| Bk. S. Abut. | 15+41.96 | 26.00 | 610.08 |
| A3 | 15+51.96 | 26.00 | 610.01 |
| A4 | 15+61.96 | 26.00 | 609.93 |
| End S. Appr. Slab | 15+71.96 | 26.00 | 609.85 |

TOP OF SOUTH APPROACH
SLAB ELEVATIONS
STRUCTURE NO. 016-2030

| | | | | | | |
|--|---------------------------------------|---------------|--------------------|------------------|--------------|-----------|
| LIN ENGINEERING, LTD. Consulting Engineers Chatham, Illinois | SHEET NO. 10 | F.A.I. RTE. | SECTION | COUNTY | TOTAL SHEETS | SHEET NO. |
| | 32 SHEETS | 57 | 2222.3B | COOK | 77 | 40 |
| Designed By: ESH Date: 7/2009 | Checked By: MTH File: 016-2030.dgn | Drawn By: ESH | CONTRACT NO. 62119 | | | |
| FED. ROAD DIST. NO. | | ILLINOIS | | FED. AID PROJECT | | |