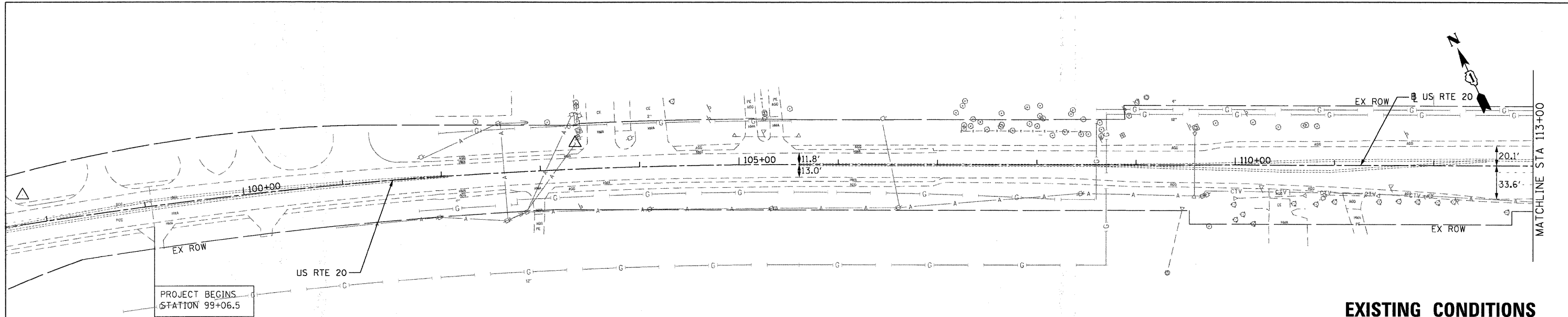


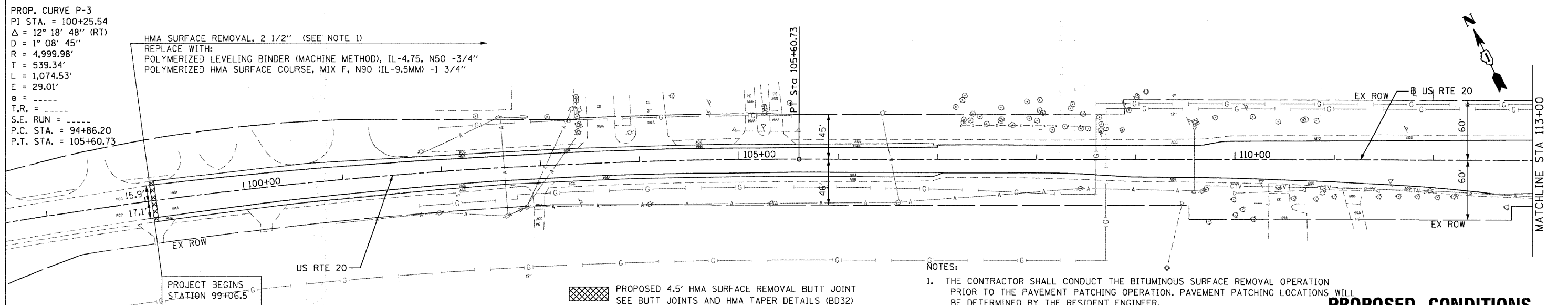
BY	DATE
SURVEYED	
PLANNED	
DESIGNED	
CHECKED	
NO. OF WAYS CHECKED	
CADD FILE NAME	

BY	DATE
PROFILE	
DESIGNED	
CHECKED	
NO. OF WAYS CHECKED	
CADD FILE NAME	

FILE NAME: P:\2009\ME09066\_Ver-Vor-PA1\CADD\W05\_US20\Shets\162529-1.dgn  
 USER NAME: Millennium Professional Services

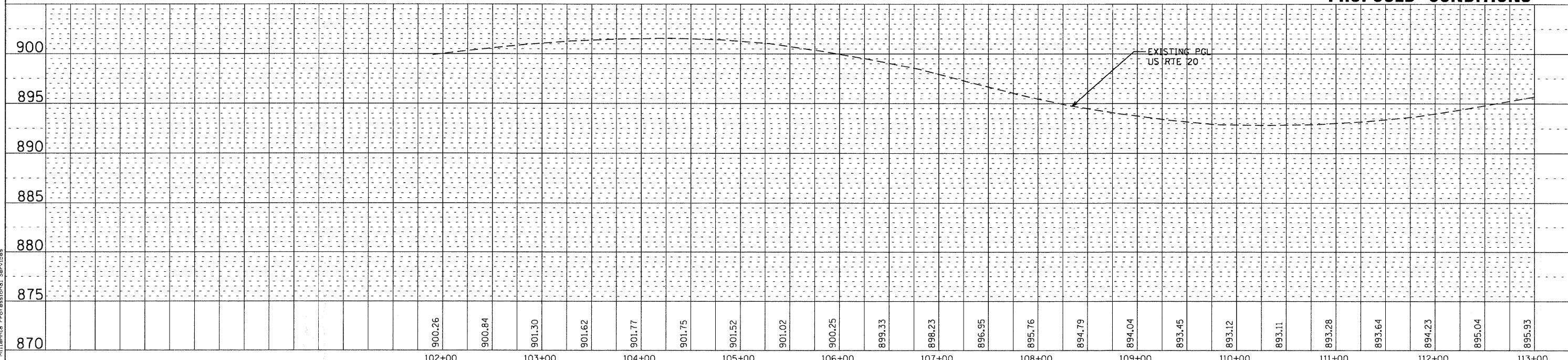


**EXISTING CONDITIONS**



**PROPOSED CONDITIONS**

NOTES:  
 1. THE CONTRACTOR SHALL CONDUCT THE BITUMINOUS SURFACE REMOVAL OPERATION PRIOR TO THE PAVEMENT PATCHING OPERATION. PAVEMENT PATCHING LOCATIONS WILL BE DETERMINED BY THE RESIDENT ENGINEER.



DESIGNED - TVN	REVISED -	<b>STATE OF ILLINOIS</b> <b>DEPARTMENT OF TRANSPORTATION</b>	<b>U.S. ROUTE 20</b> <b>EAST OF PLANK ROAD TO WELD ROAD</b>		<b>PLAN AND PROFILE</b>		F.A.P. RTE. 345	SECTION 8WRS-2	COUNTY KANE	TOTAL SHEETS 72	SHEET NO. 12
DRAWN - TVN	REVISED -		SCALE: 1"=50'		SHEET NO. OF SHEETS		CONTRACT NO. 62529				
CHECKED - RPD	REVISED -		STA. 105+60 TO STA. 114+00				FED. ROAD DIST. NO. 1		ILLINOIS FED. AID PROJECT		
DATE - 4/9/2010	REVISED -						P:\2009\ME09066_Ver-Vor-PA1\CADD\W05_US20\Shets\162529-shet-PP-1.dgn				