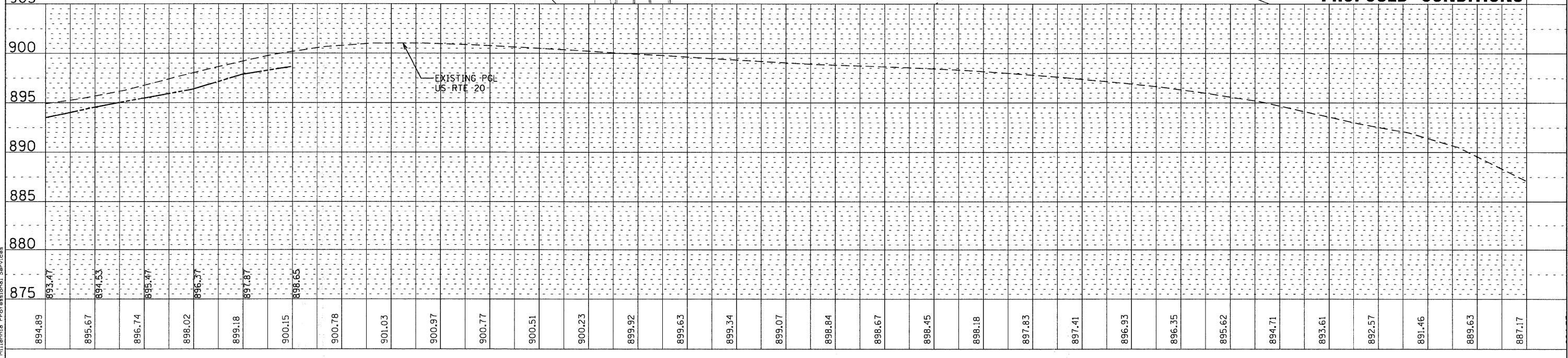
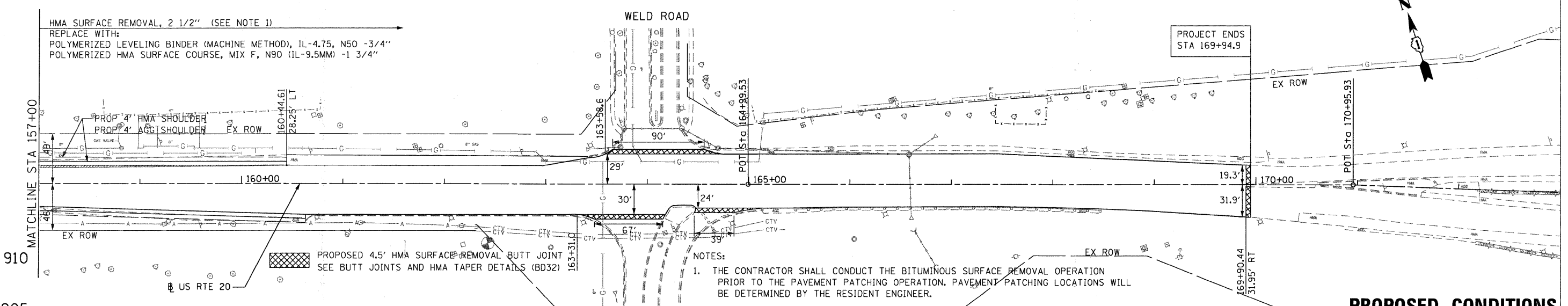
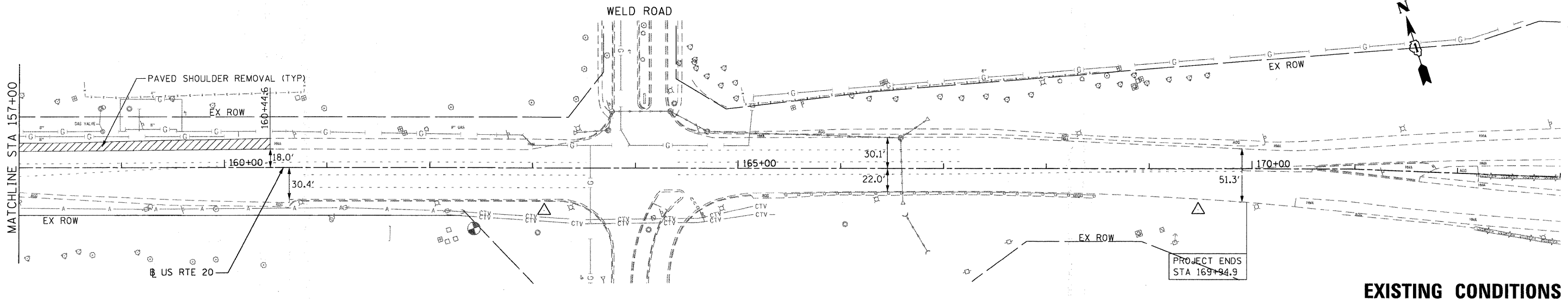


PLAN	SURVEYED	DATE
	ALIGNED	
	NOTED	
	CHECKED	
	RT. OF WAY	
	FILE NAME	
	NO.	

PROFILE	SURVEYED	DATE
	PLOTTED	
	NOTED	
	CHECKED	
	STRUCTURE	
	NOTATIONS	
	CHKD	
	FILE NAME	
	NO.	

PA:2009\MEN89806.Ver\Ver_Plan\CADD\W05-US20\Sheet\162529.dgn
 FILE NAME = PA:2009\MEN89806.Ver\Ver_Plan\CADD\W05-US20\Sheet\162529.dgn
 USER NAME = Millennium Professional Services



200 22ND Street, Suite 216, Lombard, IL 60148
 630.705.4114 voice, 630.839.2566 fax
 WWW.MPS-IL.COM
MILLENNIA PROFESSIONAL SERVICES

DESIGNED	-	TVN	REVISED	-
DRAWN	-	TVN	REVISED	-
CHECKED	-	RPD	REVISED	-
DATE	-	4/9/2010	REVISED	-

**STATE OF ILLINOIS
 DEPARTMENT OF TRANSPORTATION**

**U.S. ROUTE 20
 EAST OF PLANK ROAD TO WELD ROAD**
 SCALE: 1"=50' SHEET NO. OF 16 SHEETS STA. 157+00 TO STA. 169+60

PLAN AND PROFILE

F.A.P. RTE.	SECTION	COUNTY	TOTAL SHEETS	SHEET NO.
345	8WRS-2	KANE	72	16
CONTRACT NO.				62529
FED. ROAD DIST. NO. 1 [ILLINOIS] FED. AID PROJECT				
PA:2009\MEN89806.Ver\Ver_Plan\CADD\W05-US20\Sheet\162529-sht-PP-5.dgn				