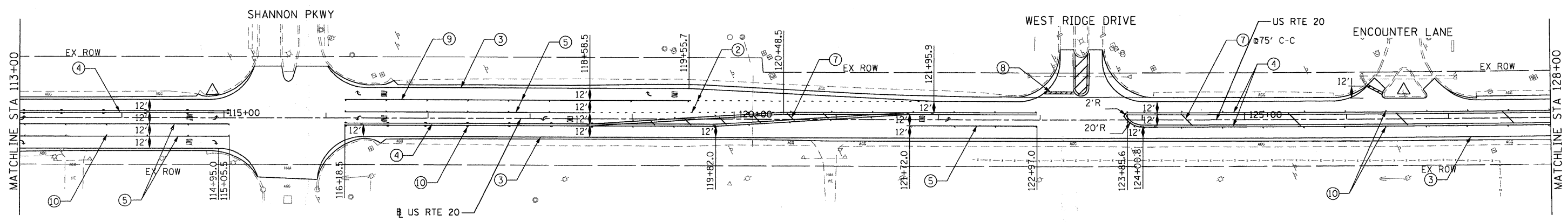
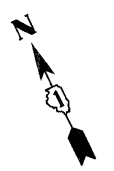


PROJECT BEGINS
STATION 99+06.5

MATCHLINE STA 113+00



PAVEMENT MARKING LEGEND (SEE NOTE 2)

- ① THERMOPLASTIC PAVEMENT MARKING 4" WHITE LANE LINE (30' SKIP 10' DASH)
- ② THERMOPLASTIC PAVEMENT MARKING 6" WHITE LANE LINE (6' SKIP 2' DASH)
- ③ THERMOPLASTIC PAVEMENT MARKING 4" SOLID WHITE LINE
- ④ THERMOPLASTIC PAVEMENT MARKING 4" DOUBLE YELLOW LINE 11" C-C
- ⑤ THERMOPLASTIC PAVEMENT MARKING 6" WHITE LINE
- ⑥ THERMOPLASTIC PAVEMENT MARKING 12" WHITE LINE
- ⑦ THERMOPLASTIC PAVEMENT MARKING 12" DIAGONAL YELLOW LINE
- ⑧ THERMOPLASTIC PAVEMENT MARKING 24" WHITE STOP BAR
- ⑨ THERMOPLASTIC PAVEMENT MARKING LETTERS AND SYMBOLS (TYP)
- ⑩ RAISED REFLECTIVE PAVEMENT MARKER (SEE NOTE 3)

NOTES:

1. REFER TO DISTRICT 1 TYPICAL PAVEMENT MARKINGS (TC-13) FOR ADDITIONAL INFORMATION.
2. REFER TO DISTRICT 1 RAISED REFLECTIVE PAVEMENT MARKERS (TC-11) FOR ADDITIONAL INFORMATION.

FILE NAME : F:\2009\ME09006_VerVer_Plan\CADD\W05_US20_Shts\DI62529-sh-1-PMK-1.dgn
 USER NAME : Millennium Professional Services



200 22ND Street, Suite 216, Lombard, IL 60148
 630.705.0110 voice, 630.839.2566 fax
 WWW.MPS-IL.COM
MILLENNIA PROFESSIONAL SERVICES

| | |
|-----------------|-----------|
| DESIGNED - TVN | REVISED - |
| DRAWN - TVN | REVISED - |
| CHECKED - RPD | REVISED - |
| DATE - 4/9/2010 | REVISED - |

STATE OF ILLINOIS
DEPARTMENT OF TRANSPORTATION

U.S. ROUTE 20
EAST OF PLANK ROAD TO WELD ROAD

PAVEMENT MARKING PLAN

SCALE: 1"=50' SHEET NO. OF SHEETS STA. 105+60 TO STA. 144+00

| | | | | |
|--------------------|----------------|-------------|-----------------|--------------|
| F.A.P. RTE. 345 | SECTION 8WRS-2 | COUNTY KANE | TOTAL SHEETS 72 | SHEET NO. 28 |
| CONTRACT NO. 62529 | | | | |

PMK-1

F:\2009\ME09006_VerVer_Plan\CADD\W05_US20_Shts\DI62529-sh-1-PMK-1.dgn