

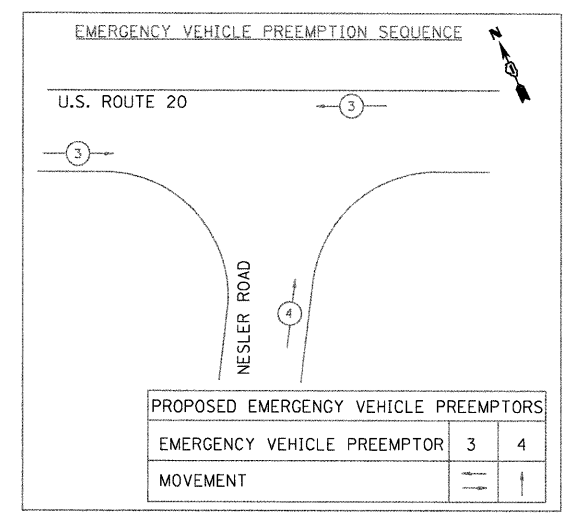
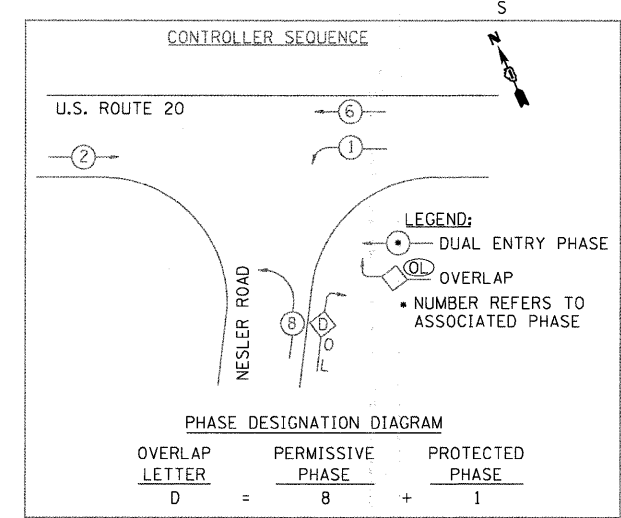
CABLE PLAN
NOT TO SCALE

SCHEDULE OF QUANTITIES

ITEM	UNIT	QTY
TRANSCEIVER- FIBEROPTIC	EACH	1
FULL-ACTUATED CONTROLLER AND TYPE V CABINET, SPECIAL	EACH	1
SIGNAL HEAD, LED, 1-FACE, 3-SECTION, MAST-ARM MOUNTED	EACH	5
SIGNAL HEAD, LED, 1-FACE, 3-SECTION, BRACKET MOUNTED	EACH	3
SIGNAL HEAD, LED, 1-FACE, 5-SECTION, BRACKET MOUNTED	EACH	1
SIGNAL HEAD, LED, 1-FACE, 5-SECTION, MAST-ARM MOUNTED	EACH	1
DETECTOR LOOP REPLACEMENT	FOOT	376
INDUCTIVE LOOP DETECTOR	EACH	5
RELOCATE EXISTING EMERGENCY VEHICLE PRIORITY SYSTEM, PHASING UNIT	EACH	1
REMOVE EXISTING SIGNAL HEAD	EACH	10

THE END OF THE TRACER CABLE SHALL BE CONTINUOUS AND EXTEND INTO THE CONTROLLER CABINET.

THE TRAFFIC SIGNAL CONTROL EQUIPMENT FOR THIS SYSTEM SHALL BE "EAGLE" TO MATCH THE EXISTING ADJACENT SYSTEM.



I.D.O.T. TRAFFIC SIGNAL INSTALLATION ELECTRICAL SERVICE REQUIREMENTS					
TYPE	NO. OF LAMPS	WATTAGE		% OPERATION	TOTAL WATTAGE
		X INCAND.	LED X		
SIGNAL (RED)	10	135	17	0.50	85
(YELLOW)	10	135	25	0.25	62.5
(GREEN)	10	135	15	0.25	37.5
ARROW	4	135	12	0.10	4.8
PED. SIGNAL	-	135	12	0.19	-
CONTROLLER	1	100	100	1.00	100
ILLUM. SIGN	-	84	-	0.05	-
FLASHER	-	-	-	0.50	-
TOTAL					289.8

ENERGY COSTS TO:
ILLINOIS DEPARTMENT OF TRANSPORTATION
201 WEST CENTER COURT
SCHAUMBURG, ILLINOIS 60196-1096
ENERGY SUPPLY: CONTACT: ROSE PECORARO
PHONE: (847) 608-2331
COMPANY: COMED

FOUNDATION (DEPTH)	(FT.)	CABLE SLACK	(FT.)	VERTICAL	(FT.)
TYPE A - POST	4	HANDHOLE	6.5	ALL FOUNDATIONS	3.5
D - CONTROLLER	4	DOUBLE HANDHOLE	13	MAST ARM (L) POLE	20' + L-2 =
E - M. ARM POLE		SIGNAL POST	2	BRACKET MOUNTED	13
24"	10	CONTROLLER CAB.	1	PED. PUSHBUTTON	4
30"	15	FIBER OPTIC	13	ELECTRIC SERVICE	13.5
36"	15	ELECTRIC SERVICE	1	SERVICE TO GROUND	13.5
		GROUND CABLE	1	POST MOUNTED	6

DESIGNED	TVN	REVISED	-
DRAWN	TVN	REVISED	-
CHECKED	RPD	REVISED	-
DATE	4/9/2010	REVISED	-

STATE OF ILLINOIS
DEPARTMENT OF TRANSPORTATION

CABLE PLAN, PHASE DESIGNATION DIAGRAM,
SCHEDULE OF QUANTITIES
US 20 AT NESLER ROAD

F.A.P. RTE.	SECTION	COUNTY	TOTAL SHEETS	SHEET NO.
345	8WRS-2	KANE	72	41
CONTRACT NO. 62529				

FILE NAME: P:\2009\ME09086_Ver_Ver_Phi\CADD\W05.US20\Shets\162529-sh1-T502-2Nesler-CBL.dgn
USER NAME: M. Williams, Professional Services