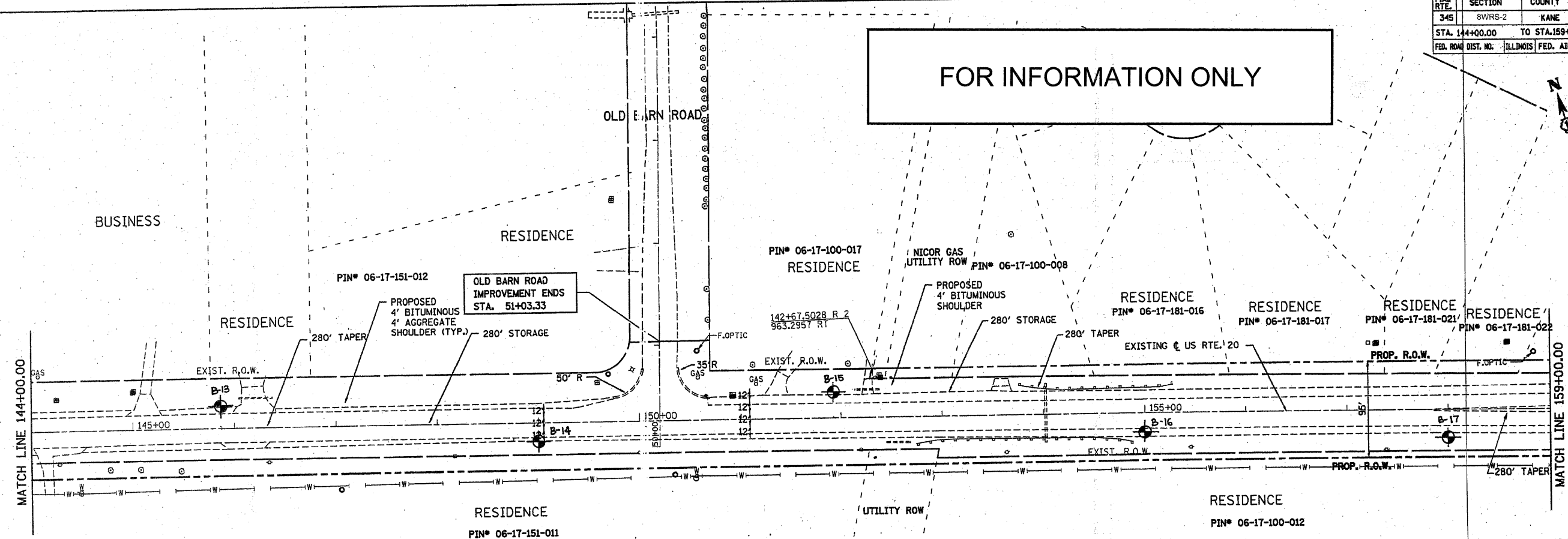


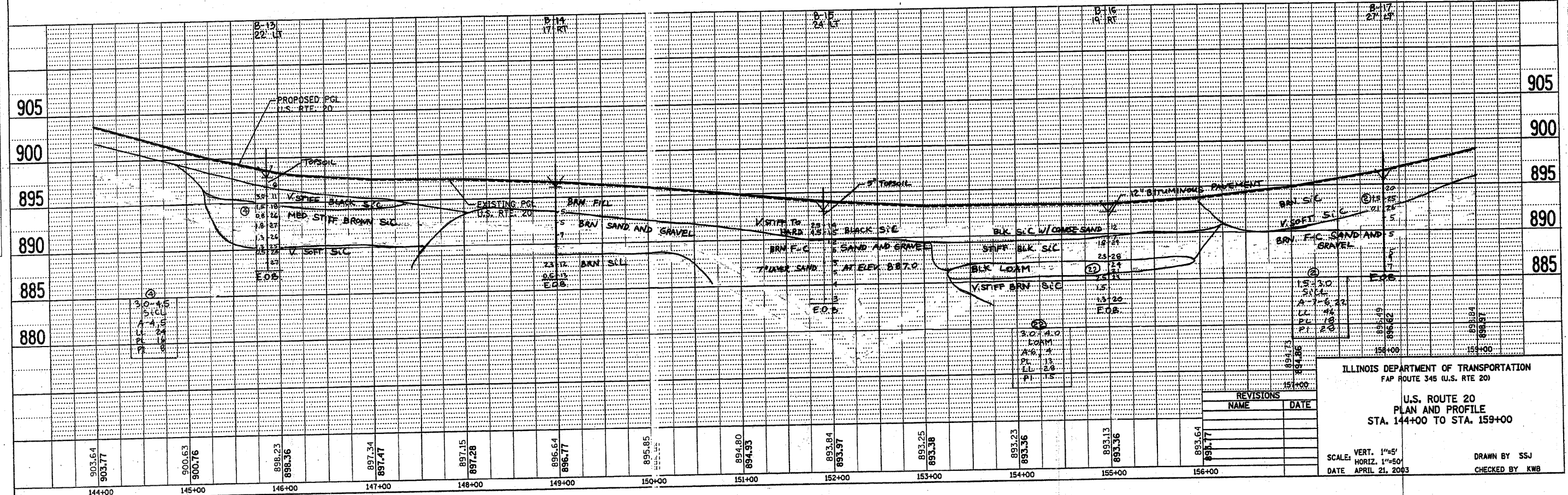
F.A.P. RTE.	SECTION	COUNTY	TOTAL SHEETS	SHEET NO.
345	8WRS-2	KANE	72	48
STA. 144+00.00		TO STA. 159+00.00		
FED. RDW. DIST. NO.		ILLINOIS FED. AID PROJECT		

FOR INFORMATION ONLY

PLAN	DATE
REVISION	BY
NOTE BOOK	NO.
FILE NO.	NO.
ADD FILE NAME	



PROFILE	DATE
REVISION	BY
NOTE BOOK	NO.
FILE NO.	NO.
ADD FILE NAME	



REVISIONS	
NAME	DATE

ILLINOIS DEPARTMENT OF TRANSPORTATION  
FAP ROUTE 345 (U.S. RTE 20)  
  
U.S. ROUTE 20  
PLAN AND PROFILE  
STA. 144+00 TO STA. 159+00

SCALE: VERT. 1"=5'  
HORIZ. 1"=50'  
DATE: APRIL 21, 2003  
DRAWN BY: SSJ  
CHECKED BY: KWB