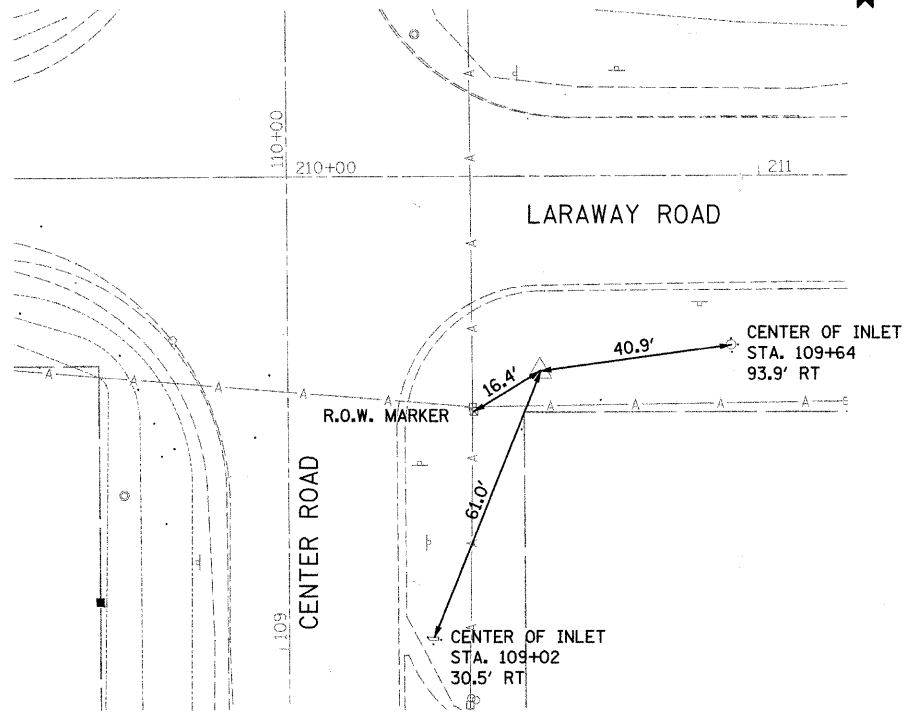
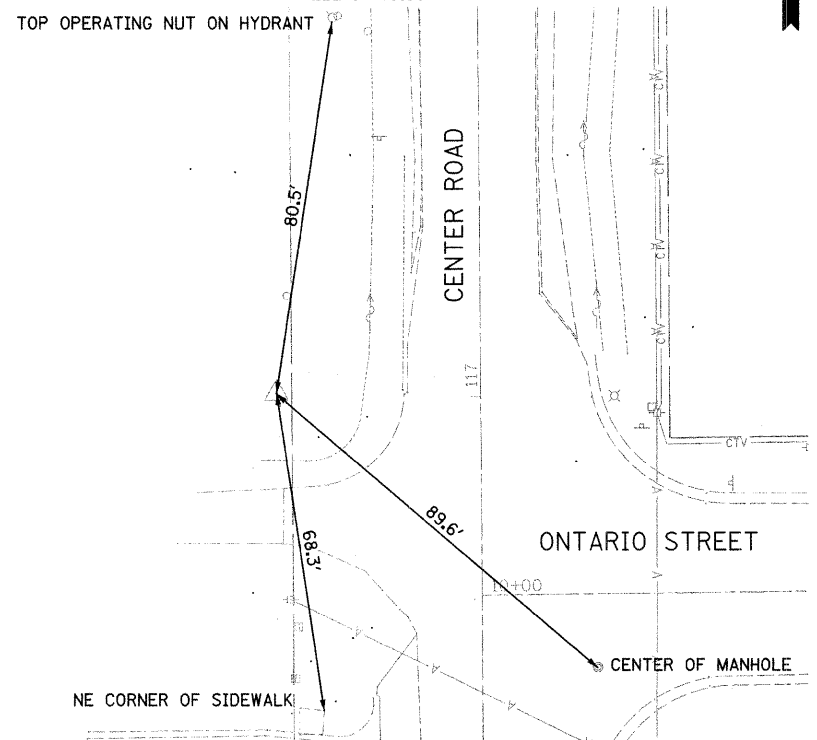


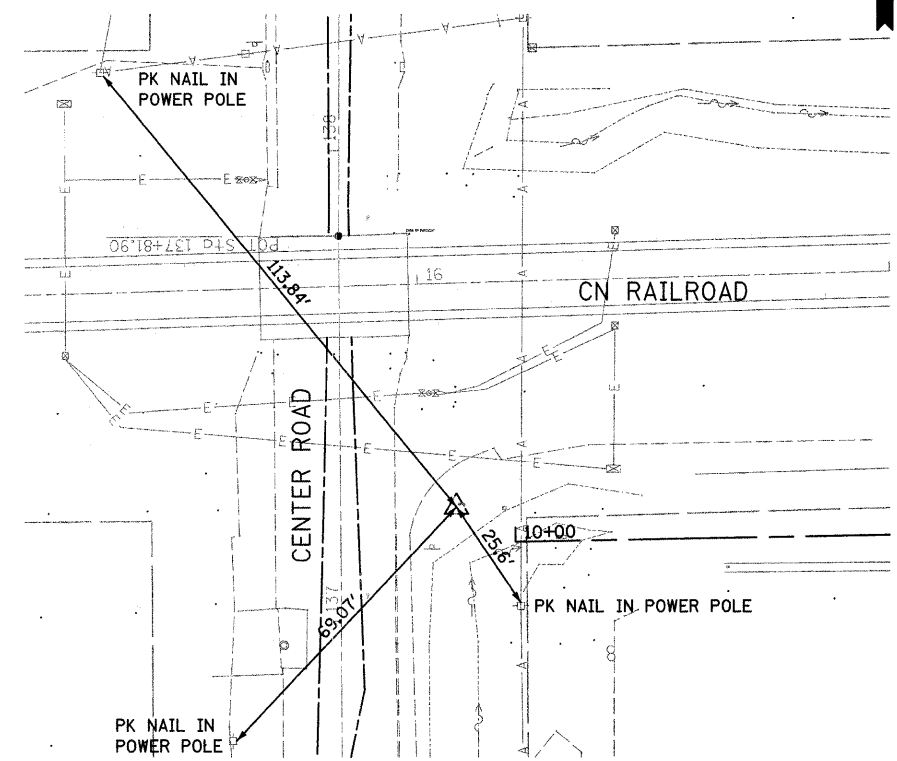
CP 5
REBAR W/ CAP
NORTHING: 1,755,092.51
EASTING: 1,117,183.33
ELEV: 776.60



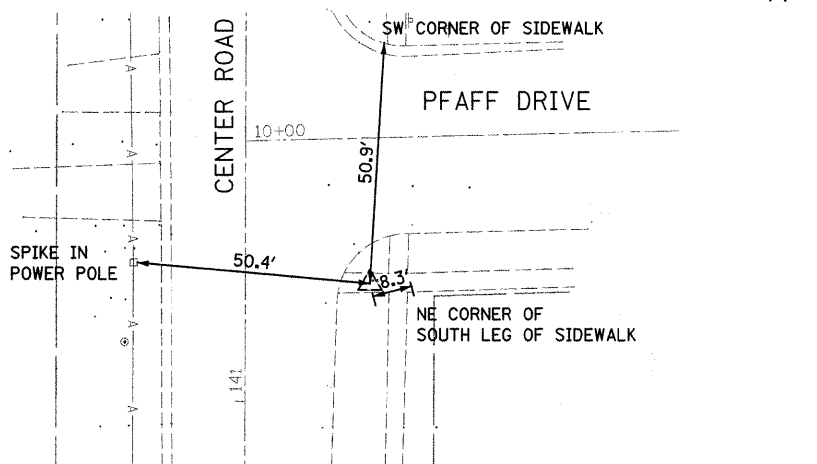
CP 10
REBAR W/ CAP
NORTHING: 1,755,834.13
EASTING: 1,117,081.28
ELEV: 773.90



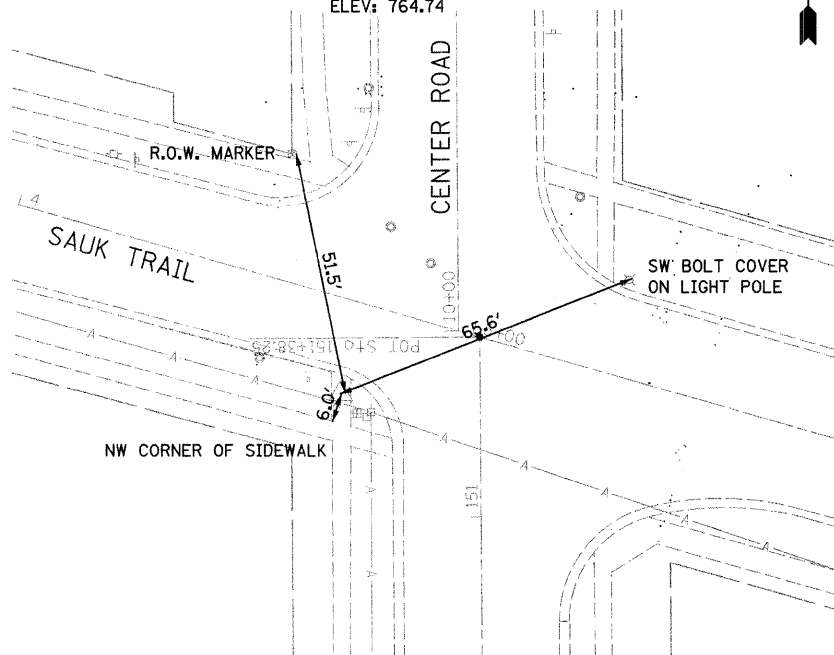
CP 20
REBAR W/CAP
NORTHING: 1,757,857.73
EASTING: 1,117,134.19
ELEV: 767.09



CP 25
CHISELED "X"
NORTHING: 1,758,258.31
EASTING: 1,117,136.62
ELEV: 770.07



CP 30
CHISELED "X"
NORTHING: 1,759,259.58
EASTING: 1,117,073.60
ELEV: 764.74



BENCHMARK LOCATIONS

- TBM "1"
WEST BONNET BOLT ON HYDRANT MARKED WITH AN "X"
NORTH OF TRACKS ON WEST SIDE OF CENTER ROAD
EL. 771.94
- TBM "2"
WEST BONNET BOLT ON HYDRANT MARKED WITH AN "X"
NORTH OF PFAFF DRIVE ON WEST SIDE OF CENTER ROAD
EL. 767.44
- TBM "3"
WEST BONNET BOLT ON HYDRANT SOUTH OF SAUK TRAIL
ON CENTER ROAD
EL. 766.24
- TBM "4"
ARROW BOLT ON HYDRANT AT NORTHWEST CORNER OF
SAUK TRAIL AND LINDEN DRIVE
EL. 762.78
- TBM "5"
ARROW BOLT ON HYDRANT AT NORTHWEST CORNER OF
EVERGREEN AND SAUK TRAIL
EL. 765.43
- TBM "6"
ARROW BOLT ON HYDRANT AT THE NORTHWEST CORNER
OF SYCAMORE LANE AND SAUK TRAIL
EL. 767.28

TBM = TEMPORARY BENCH MARK

HORIZONTAL DATUM: NAD 83 ILLINOIS STATE PLANE EAST ZONE
VERTICAL DATUM: NAVD 88 FROM ELLIPSOIDAL HEIGHTS

FILE NAME = s:\j\166808-6593\6628\004\microw\Sheets\benchmark.dgn



1170 SOUTH HOUBOLT ROAD JOLIET, ILLINOIS 60431 (815) 744-4200	USER NAME = edamm	DESIGNED -	REVISED -
	PLOT SCALE =	DRAWN -	REVISED -
	PLOT DATE = 3/31/22:12	CHECKED -	REVISED -
		DATE -	REVISED -

**STATE OF ILLINOIS
DEPARTMENT OF TRANSPORTATION**

CONTROL POINT TIES	
SCALE: AS SHOWN	SHEET NO. OF SHEETS STA. TO STA.

F.A.U. RTE.	SECTION	COUNTY	TOTAL SHEETS	SHEET NO.
3759	04-00038-00-WR	WILL	165	18
CONTRACT NO. 63248				
FED. ROAD DIST. NO. ILLINOIS FED. AID PROJECT				