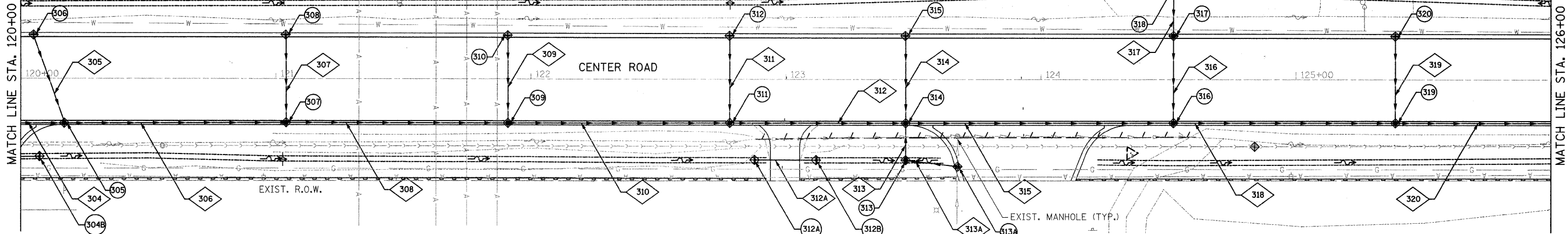


SURVEYED  
 PLOTTED  
 CHECKED  
 NO. OF WAY CHECKED  
 NO. OF MANHOLE CHECKED  
 NO. OF CADD FILE NAME

SURVEYED  
 PLOTTED  
 CHECKED  
 NO. OF WAY CHECKED  
 NO. OF MANHOLE CHECKED  
 NO. OF CADD FILE NAME

FILE NAME = s:\proj\6600-6699\6628\00A\micro\Drainage P & U\DrainageCenter P&U.dwg  
 USER NAME = edamm



SEWER PIPE SCHEDULE							DRAINAGE STRUCTURE SCHEDULE						
STR NO.	PIPE MATERIAL	PIPE SIZE (IN)	PIPE LENGTH (FT)	INVERT ELEVATION (PIPE ONLY)		Slope (%)	STR NO.	STR TY	STATION	OFFSET	RIM EL.	CASTING TYPE	TYPE OF WORK TO BE COMPLETED
				UP	DOWN								
305	SS, CL A, TY II	12	38.0	768.15	767.98	0.45%	304B	FES	120+07	30.4 RT	769.96	-	PRECAST REINF. CONC, FES, 12"
306	SS, CL A, TY II	15	97.0	766.46	765.93	0.55%	305	CB	120+17	18.1 RT	772.62	TYPE 11	CB, TY A, 5' DIA
307	SS, CL A, TY II	12	35.0	767.78	767.62	0.46%	306	INL	120+05	18.1 LT	772.67	TYPE 11	INLET, TY A, 2' DIA
308	SS, CL A, TY II	15	87.0	765.83	765.28	0.63%	307	CB	121+05	18.1 RT	772.25	TYPE 11	CB, TY A, 4' DIA
309	SS, CL A, TY II	12	35.0	767.42	767.26	0.46%	308	INL	121+05	18.1 LT	772.25	TYPE 11	INLET, TY A, 2' DIA
310	SS, CL A, TY II	15	87.0	765.18	764.63	0.63%	309	CB	121+91	18.1 RT	771.89	TYPE 11	CB, TY A, 4' DIA
311	SS, CL A, TY II	12	35.0	767.05	766.89	0.46%	310	INL	121+91	18.1 LT	771.89	TYPE 11	INLET, TY A, 2' DIA
312	SS, CL A, TY II	15	69.0	764.53	764.11	0.61%	311	CB	122+78	18.1 RT	771.52	TYPE 11	CB, TY A, 4' DIA
312A	CULV, CL A, TY I	15	13.0	768.48	768.42	0.40%	312	INL	122+78	18.1 LT	771.52	TYPE 11	INLET, TY A, 2' DIA
313	SS, CL A, TY II	18	17.0	764.17	764.11	0.35%	312A	FES	122+88	31.6 RT	768.48	-	PRECAST REINF. CONC, FES, 15"
313A	SS, CL A, TY II	12	32.0	767.66	765.22	7.62%	312B	FES	123+12	31.7 RT	768.42	-	PRECAST REINF. CONC, FES, 15"
314	SS, CL A, TY II	12	35.0	766.76	766.60	0.46%	313	CB	123+47	31.1 RT	768.22	TYPE 8	CB, TY A, 4' DIA
315	SS, CL A, TY II	24	105.0	764.01	763.83	0.17%	313A	CB	123+67	34.3 RT	770.31	TYPE 11	CB, TY A, 4' DIA
316	SS, CL A, TY II	24	35.0	763.87	763.81	0.17%	314	CB	123+47	18.1 RT	771.23	TYPE 11	CB, TY A, 5' DIA
317	SS, CL A, TY II	24	18.0	764.05	763.97	0.44%	315	INL	123+47	18.1 LT	771.23	TYPE 11	INLET, TY A, 2' DIA
318	SS, CL A, TY II	24	87.0	763.73	763.25	0.55%	316	CB	124+52	18.1 RT	770.79	TYPE 11	CB, TY A, 5' DIA
319	SS, CL A, TY II	12	35.0	765.96	765.80	0.46%	317	CB	124+52	18.1 LT	770.79	TYPE 11	CB, TY A, 4' DIA
320	SS, CL A, TY II	24	98.0	763.15	762.52	0.64%	318	CB	124+52	35.5 LT	767.09	TYPE 8	CB, TY A, 4' DIA
							319	CB	125+39	18.1 RT	770.43	TYPE 11	CB, TY A, 4' DIA
							320	INL	125+39	18.1 LT	770.43	TYPE 11	INLET, TY A, 2' DIA

• SEE PREVIOUS SHEET FOR PIPE 304

NOTE:  
 RIM ELEVATION AND OFFSET FOR STRUCTURES LOCATED IN CURB LINE ARE MEASURED TO THE BACK AND TOP OF CURB.

