

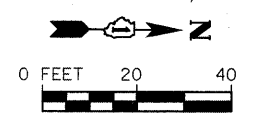
PAVEMENT MARKING LEGEND

- ALL PROPOSED PAVEMENT MARKINGS SHALL BE THERMOPLASTIC, PER THE LATEST EDITION ON THE MANUAL OF UNIFORM TRAFFIC CONTROL DEVICES (MUTCD).
- ① THERMOPLASTIC PAVEMENT MARKING - LETTERS AND SYMBOLS (WHITE LARGE SIZE, 8")
 - ② THERMOPLASTIC PAVEMENT MARKING - LINE 4-IN (YELLOW SKIP DASH, 10' DASH, 30' SPACE)
 - ③ THERMOPLASTIC PAVEMENT MARKING - LINE 6-IN (SOLID WHITE)
 - ④ THERMOPLASTIC PAVEMENT MARKING - LINE 4-IN (2 SOLID YELLOW SPACED 11-IN C-C)
 - ⑤ THERMOPLASTIC PAVEMENT MARKING - LINE 6-IN (DOTTED WHITE, 2' STRIPE, 6' GAP)
 - ⑥ THERMOPLASTIC PAVEMENT MARKING - LINE 24-IN (SOLID WHITE)
 - ⑦ THERMOPLASTIC PAVEMENT MARKING - LINE 12-IN (SOLID YELLOW AT 45° (SEE NOTE 6))
 - ⑧ THERMOPLASTIC PAVEMENT MARKING - LINE 4-IN (YELLOW, 10' DASH, 30' SPACE, AND SOLID YELLOW: 5 1/2-IN C-C BETWEEN SOLID AND SKIP DASH LINES)
 - ⑨ THERMOPLASTIC PAVEMENT MARKING - LINE 16-IN (SOLID WHITE)
 - ⑩ THERMOPLASTIC PAVEMENT MARKING - LETTERS AND SYMBOLS (WHITE 6")
 - ⑪ THERMOPLASTIC PAVEMENT MARKING - LINE 4-IN (SOLID WHITE)
 - ⑫ THERMOPLASTIC PAVEMENT MARKING - LINE 12-IN (SOLID WHITE AT 45°, SPACING AS NOTED)
 - ⑬ THERMOPLASTIC PAVEMENT MARKING - LINE 4-IN (SOLID YELLOW)

NOTES:

1. PAVEMENT MARKINGS ACCORDING TO DISTRICT ONE TYPICAL PAVEMENT MARKINGS DETAIL UNLESS OTHERWISE NOTED.
2. STOP BARS SHALL BE LOCATED FOUR FEET IN ADVANCE OF CROSSWALK UNLESS OTHERWISE NOTED.
3. PROPOSED CROSSWALK STRIPING SHALL BE CENTERED ON THE CURB DEPRESSIONS AT CORNERS, A MINIMUM OF SIX FEET APART, OR AS DIRECTED BY THE ENGINEER.
4. PAVEMENT MARKINGS AT SIDE STREETS SHALL MATCH EXISTING AT PROJECT LIMITS.
5. RAISED REFLECTIVE PAVEMENT MARKERS SHALL BE PLACED ACCORDING TO THE IDOT DISTRICT ONE TYPICAL APPLICATIONS REFLECTIVE PAVEMENT MARKERS (SNOW PLOW RESISTANT).
6. SPACING FOR DIAGONAL LINES SHALL BE IN ACCORDANCE WITH THE IDOT DISTRICT ONE TYPICAL PAVEMENT MARKINGS DETAIL.

* = LARAWAY ROAD STATIONING



FILE NAME = s:\proj\6208-6591\6208-004\mxd\Stripping\Stripping-center-01.dgn

STRAND ENGINEERS
 1170 SOUTH HOUBOLT ROAD
 JOLIET, ILLINOIS 60431
 (815) 744-4200

USER NAME = edamm	DESIGNED -	REVISED -
PLOT SCALE = 20,0000' / IN.	DRAWN -	REVISED -
PLOT DATE = 3/31/2012	CHECKED -	REVISED -
	DATE -	REVISED -

**STATE OF ILLINOIS
DEPARTMENT OF TRANSPORTATION**

PROPOSED PAVEMENT MARKING AND SIGNING PLAN

SCALE: AS SHOWN SHEET NO. OF SHEETS STA. TO STA.

F.A.U. RTE.	SECTION	COUNTY	TOTAL SHEETS	SHEET NO.
3759	04-00038-00-WR	WILL	165	61
CONTRACT NO. 63248				

FED. ROAD DIST. NO. ILLINOIS FED. AID PROJECT