

PROJECT Center and West Laraway Roads

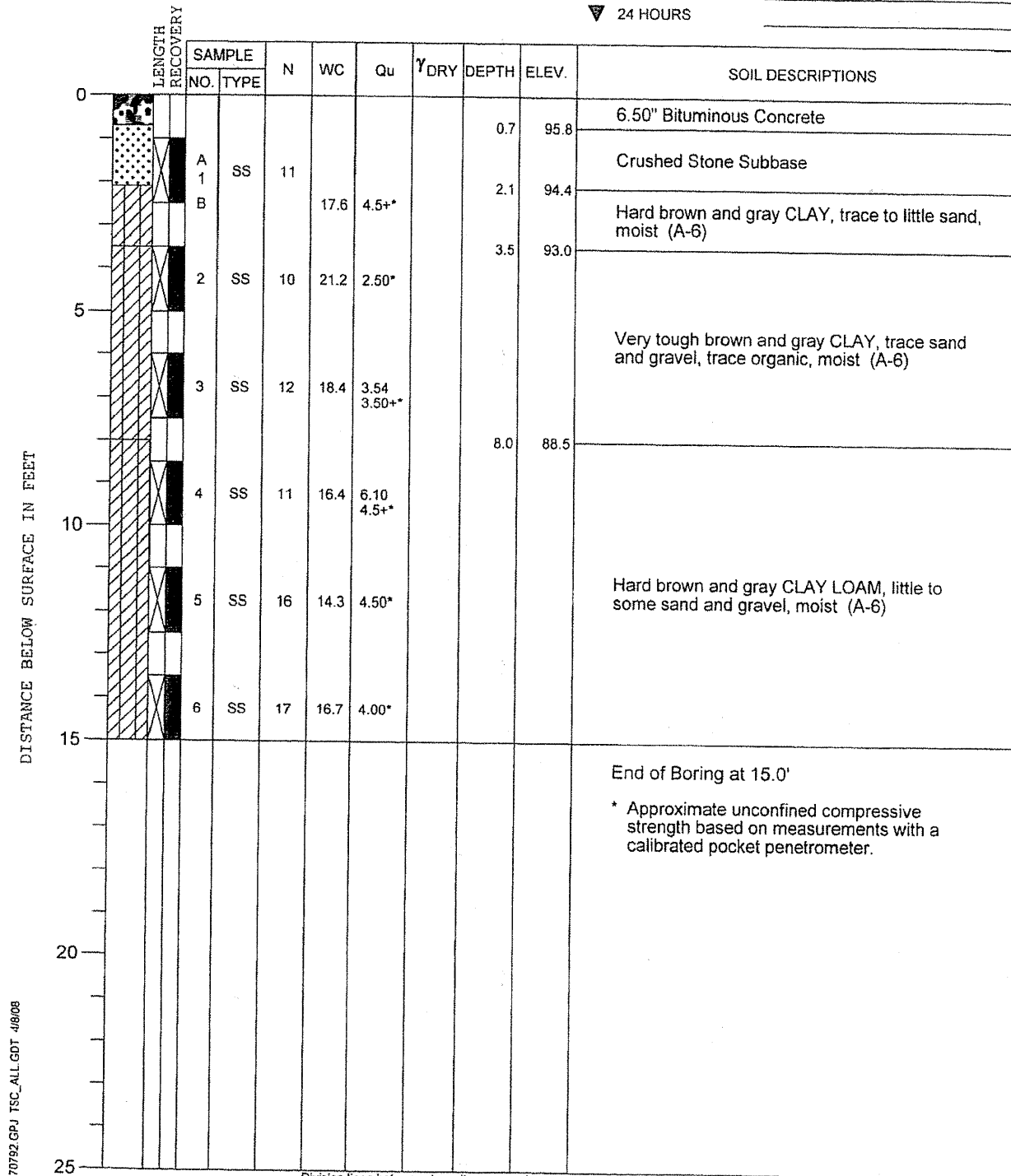
CLIENT Strand Associates, Inc.



BORING 13 DATE STARTED 3-7-08 DATE COMPLETED 3-7-08 JOB L-70,792

ELEVATIONS
 GROUND SURFACE 96.5
 END OF BORING 81.5

WATER LEVEL OBSERVATIONS
 ▽ WHILE DRILLING Dry
 ▽ AT END OF BORING Dry
 ▽ 24 HOURS



DRILL RIG NO. 262

Division lines between deposits represent approximate boundaries between soil types; in-situ, the transition may be gradual.

PROJECT Center and West Laraway Roads

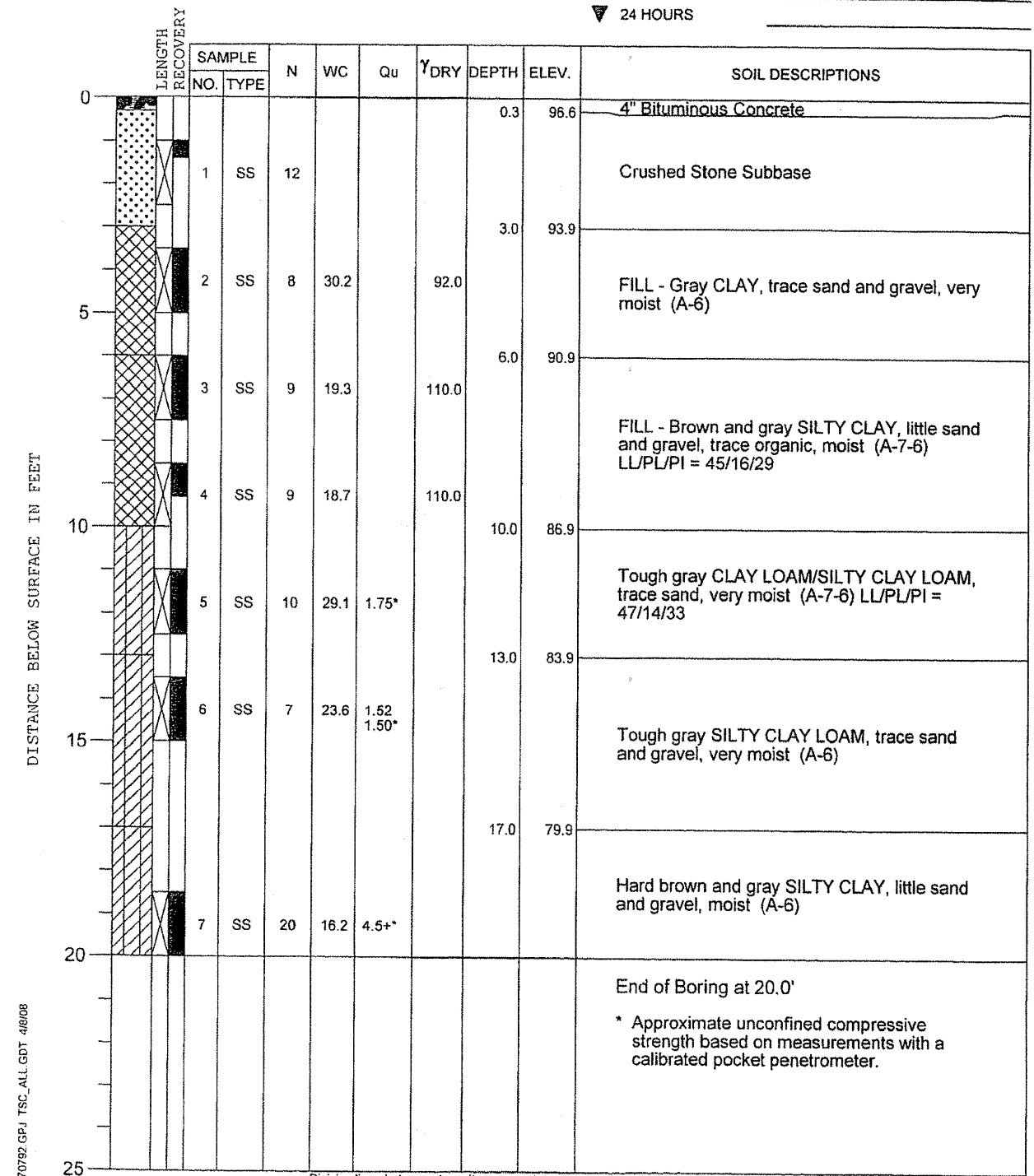
CLIENT Strand Associates, Inc.



BORING 14 DATE STARTED 3-7-08 DATE COMPLETED 3-7-08 JOB L-70,792

ELEVATIONS
 GROUND SURFACE 96.9
 END OF BORING 76.9

WATER LEVEL OBSERVATIONS
 ▽ WHILE DRILLING Dry
 ▽ AT END OF BORING Dry
 ▽ 24 HOURS



DRILL RIG NO. 262

Division lines between deposits represent approximate boundaries between soil types; in-situ, the transition may be gradual.

SEE PLAN AND PROFILE DRAWINGS FOR BORING LOCATIONS



USER NAME = edamm	DESIGNED -	REVISED -
PLOT SCALE = 20,000' / IN.	DRAWN -	REVISED -
PLOT DATE = 3/21/2012	CHECKED -	REVISED -
	DATE -	REVISED -

STATE OF ILLINOIS
 DEPARTMENT OF TRANSPORTATION

BORING LOGS

SCALE: AS SHOWN	SHEET NO. OF SHEETS	STA. TO STA.	F.A.U. RTE. 3759	SECTION 04-00038-00-WR	COUNTY WILL	TOTAL SHEETS 165	SHEET NO. 73
						CONTRACT NO. 63248	
FED. ROAD DIST. NO. ILLINOIS FED. AID PROJECT							

FILE NAME = s:\j\6628--6697\6628\08\micross\Boring Log\Boring Log.dgn