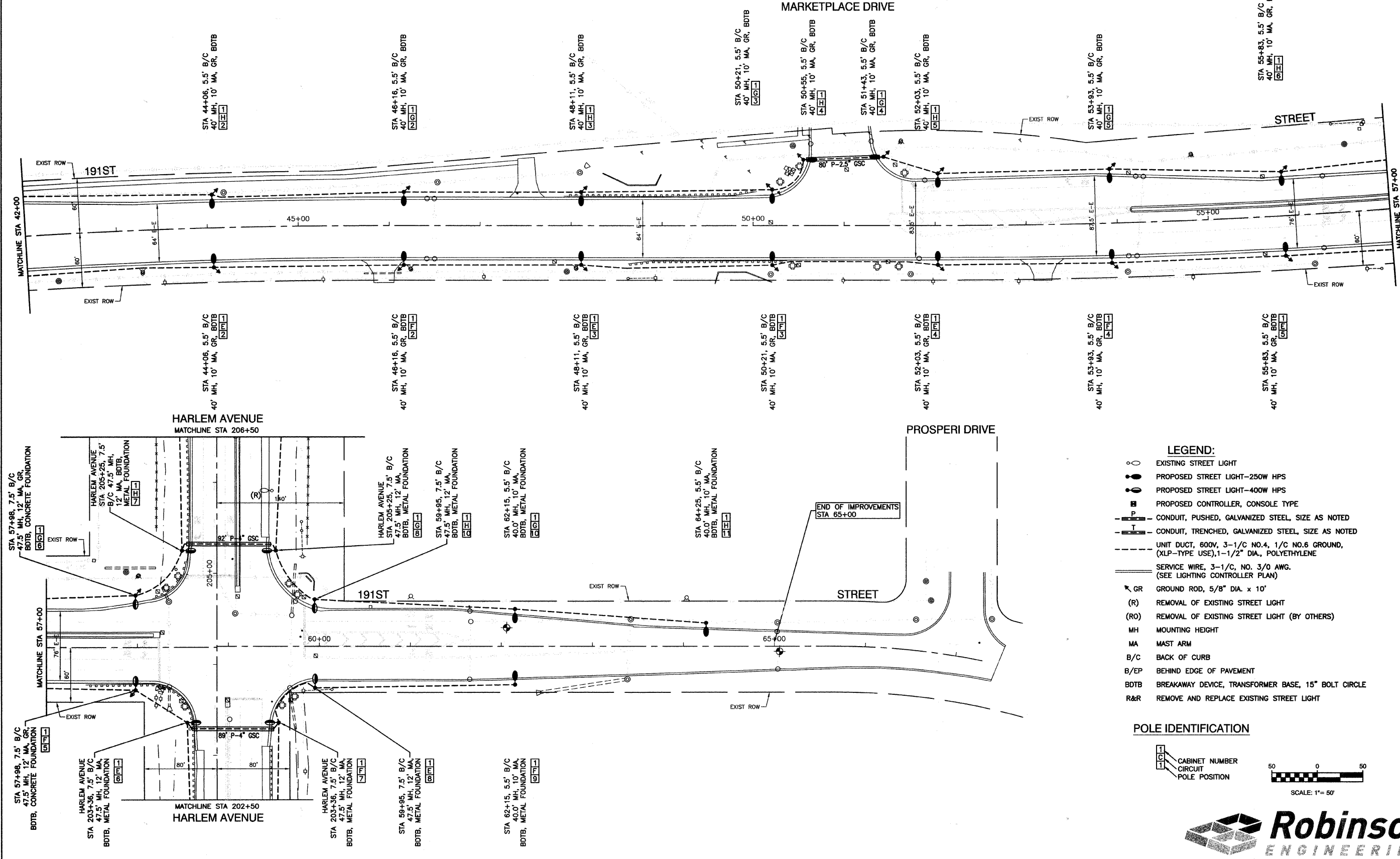


SECTION 1, TOWNSHIP 35, RANGE 12
SECTION 12, TOWNSHIP 35, RANGE 12
SECTION 7, TOWNSHIP 35, RANGE 13

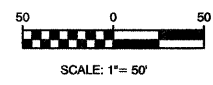
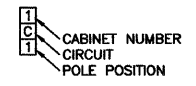
PLANNING	DATE
DESIGNED	BY
CHECKED	BY
NOTED	BY
PROJECT NO.	
DATE	
BY	

PROFILE	DATE
DESIGNED	BY
CHECKED	BY
NOTED	BY
PROJECT NO.	
DATE	
BY	



- LEGEND:**
- EXISTING STREET LIGHT
 - PROPOSED STREET LIGHT-250W HPS
 - PROPOSED STREET LIGHT-400W HPS
 - PROPOSED CONTROLLER, CONSOLE TYPE
 - CONDUIT, PUSHED, GALVANIZED STEEL, SIZE AS NOTED
 - CONDUIT, TRENCHED, GALVANIZED STEEL, SIZE AS NOTED
 - - - UNIT DUCT, 600V, 3-1/2" NO.4, 1/2" NO.6 GROUND, (XLP-TYPE USE), 1-1/2" DIA., POLYETHYLENE
 - SERVICE WIRE, 3-1/2" NO. 3/0 AWG. (SEE LIGHTING CONTROLLER PLAN)
 - GR GROUND ROD, 5/8" DIA. x 10'
 - (R) REMOVAL OF EXISTING STREET LIGHT
 - (RO) REMOVAL OF EXISTING STREET LIGHT (BY OTHERS)
 - MH MOUNTING HEIGHT
 - MA MAST ARM
 - B/C BACK OF CURB
 - B/EP BEHIND EDGE OF PAVEMENT
 - BDTB BREAKAWAY DEVICE, TRANSFORMER BASE, 15" BOLT CIRCLE
 - R&R REMOVE AND REPLACE EXISTING STREET LIGHT

POLE IDENTIFICATION



FILE NAME = 09302-PLAN-01 - BDOT P&S
USER NAME =
PLOT SCALE = 1"=50'
PLOT DATE = 10-20-09

DESIGNED -- DWS	REVISED --
CHECKED -- EJT	REVISED --
DRAWN -- MJD	REVISED --
CHECKED -- PAP	REVISED --

STATE OF ILLINOIS
DEPARTMENT OF TRANSPORTATION

191ST STREET 80TH AVENUE (FAU 2755) TO HARLEM AVENUE (FAP 0348) STREET LIGHTING PLANS				
F.A.U. RTE.	SECTION	COUNTY	TOTAL SHEETS	SHEET NO.
3754	09-00107-00-LT	WILL	12	5
SCALE: 1"=50'				SHEET NO. 5 OF 12 SHEETS STA. 42+00 TO STA. 65+00

CONTRACT NO. 63288		
FED. ROAD DIST. NO.	ILLINOIS	FED. AID PROJECT
1		M-9003 (331)