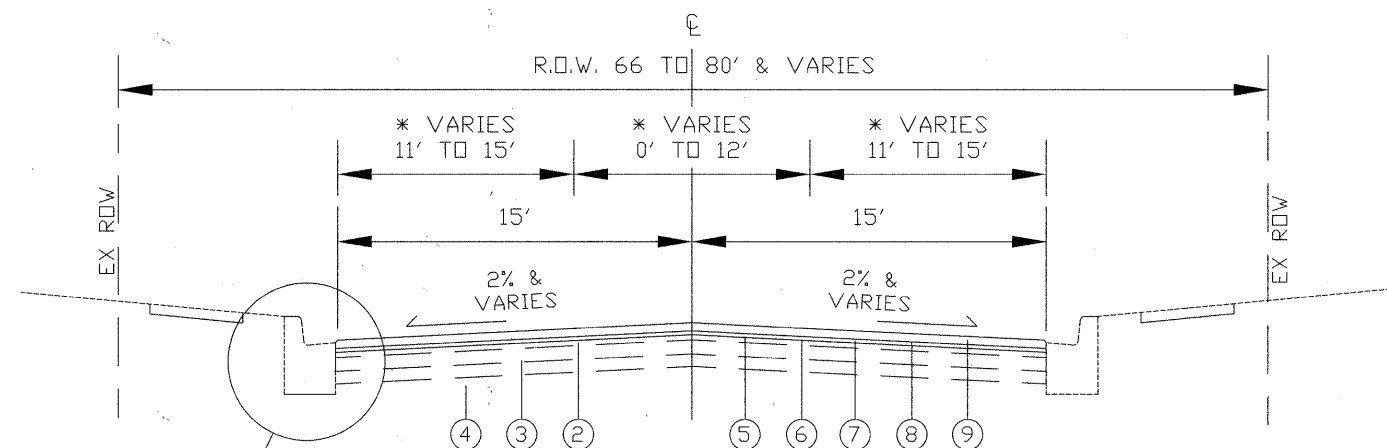


EXISTING TYPICAL SECTION
 STA. 10+50 TO STA. 39+60, ARBOR AVENUE
 * STA. 58+50 TO STA. 64+24, ARBOR AVENUE



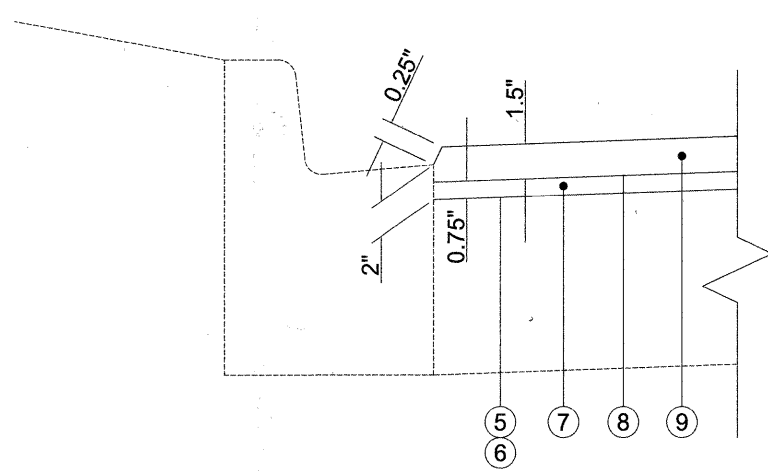
PROPOSED TYPICAL SECTION
 STA. 10+50 TO STA. 39+60, ARBOR AVENUE
 * STA. 58+50 TO STA. 64+24, ARBOR AVENUE

SEE DETAIL A

LEGEND:

- ① PR HOT-MIX ASPHALT SURFACE REMOVAL, 2"
- ② EX HOT-MIX ASPHALT SURFACE COURSE AND (LEVELING) BINDER COURSE, 3" AND VARIES (2" TO BE MILLED)
- ③ EX HOT-MIX ASPHALT BASE COURSE, 6" & VARIES
- ④ EX SUBBASE GRANULAR MATERIAL, TYPE B, 8" & VARIES
- ⑤ PR AGGREGATE (PRIME COAT)
- ⑥ PR BITUMINOUS MATERIALS (PRIME COAT)
- ⑦ PR LEVELING BINDER (MACHINE METHOD), N50, 0.75"
- ⑧ PR AREA REFLECTIVE CRACK CONTROL TREATMENT, SYSTEM A
- ⑨ PR HOT-MIX ASPHALT SURFACE COURSE, MIX "D", N50, 1.5"

DETAIL A



CONTRACTOR SHALL MILL BEFORE PATCHING

HOT-MIX ASPHALT MIXTURE REQUIREMENTS	
MIXTURE TYPE	AIR VOIDS @ Ndes
PAVEMENT RESURFACING	
HOT-MIX ASPHALT SURFACE COURSE, MIX "D", N50 (IL 9.5 mm)	4% @ 50 Gyr.
LEVELING BINDER (MACHINE METHOD), N50	4% @ 50 Gyr.
PATCHING	
CLASS D PATCH (HMA BINDER IL-19 mm)	4% @ 70 Gyr.
PAVEMENT PATCHING (PARTIAL DEPTH) (HMA BINDER IL-19 mm)	4% @ 70 Gyr.

THE UNIT WEIGHT USED TO CALCULATE ALL HMA SURFACE MIXTURE QUANTITIES IS 112 LBS/SQ YD/IN.
 THE "AC TYPE" FOR POLYMERIZED HMA MIXES SHALL BE "SBS/SBR PG 70 -22" AND FOR NON-POLYMERIZED HMA THE "AC TYPE" SHALL BE "PG 64 -22" UNLESS MODIFIED BY DISTRICT ONE SPECIAL PROVISIONS.
 FOR "PERCENT OF RAP" SEE DISTRICT ONE SPECIAL PROVISIONS.