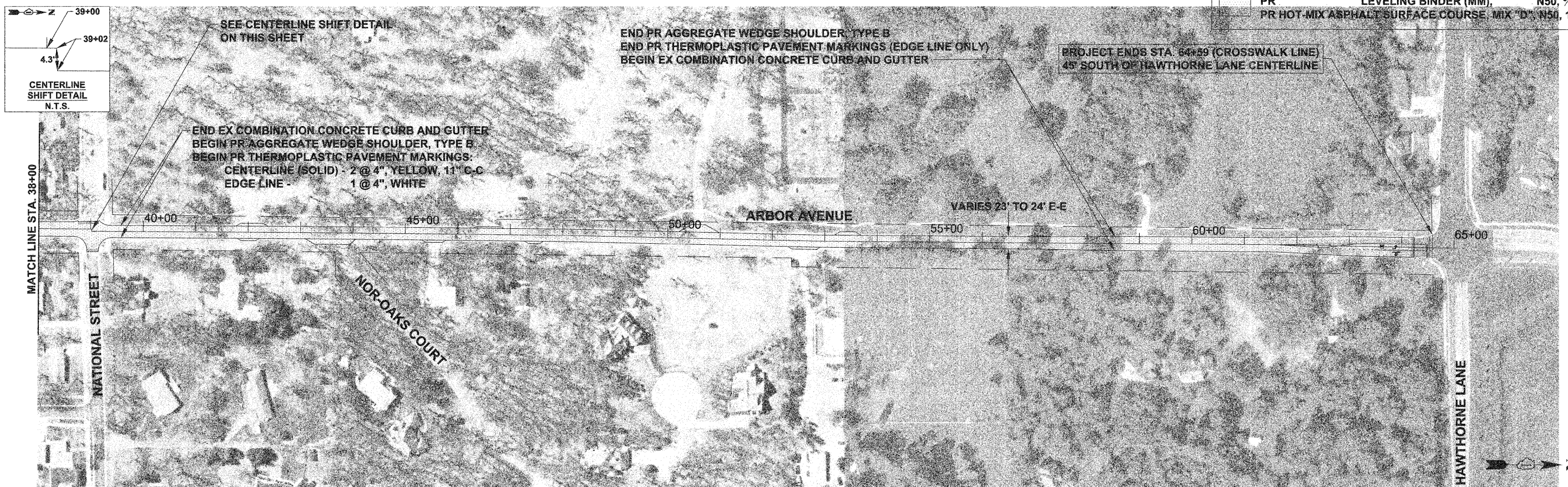




- PR HOT-MIX ASPHALT SURFACE REMOVAL - BUTT JOINT
- PR HOT-MIX ASPHALT SURFACE REMOVAL, 2"
- PR LEVELING BINDER (MM), N50, 3/4"
- PR HOT-MIX ASPHALT SURFACE COURSE, MIX "D", N50, 1 1/2"



FILE NAME = 06-07_Plan Sheets_Arbor LAPP
 PLOT DATE = 3/11/10

thomas engineering group, llc
 238 south kenilworth avenue
 suite 100
 oak park, il 60302
 phone: 708-533-1700

| | |
|-----------------|-----------|
| DESIGNED - BLP | REVISED - |
| DRAWN - BLP | REVISED - |
| CHECKED - DMM | REVISED - |
| DATE - 03/12/10 | REVISED - |

**STATE OF ILLINOIS
 DEPARTMENT OF TRANSPORTATION**

**ARBOR AVENUE - WASHINGTON STREET TO HAWTHORNE LANE
 PLAN SHEET**

SCALE: 1" = 100'

STA. 10+00 TO STA. 65+05

| | | | | |
|---|------------------------|---------------|-----------------|-------------|
| F.A.U. RTE. 2534 | SECTION 09-00077-00-RS | COUNTY DUPAGE | TOTAL SHEETS 13 | SHEET NO. 6 |
| CONTRACT NO. 63345 | | | | |
| FED. ROAD DIST. NO. 1 ILLINOIS FED. AID PROJECT ARA-9003(406) | | | | |