

F.A.U. RTE.	SECTION	COUNTY	TOTAL SHEETS	SHEET NO.
2534	09-00077-00-RS	DUPAGE	13	1
FEDERAL ROAD DIST. NO. 1 ILLINOIS		CONTRACT NO. 63345		

INDEX OF SHEETS

- 1 TITLE SHEET
- 2 GENERAL NOTES AND SUMMARY OF QUANTITIES
- 3 SCHEDULE OF QUANTITIES
- 4-5 TYPICAL SECTIONS
- 6 PLAN SHEET
- 7 INTERSECTION DETAILS
- 8-13 DISTRICT 1 DETAILS

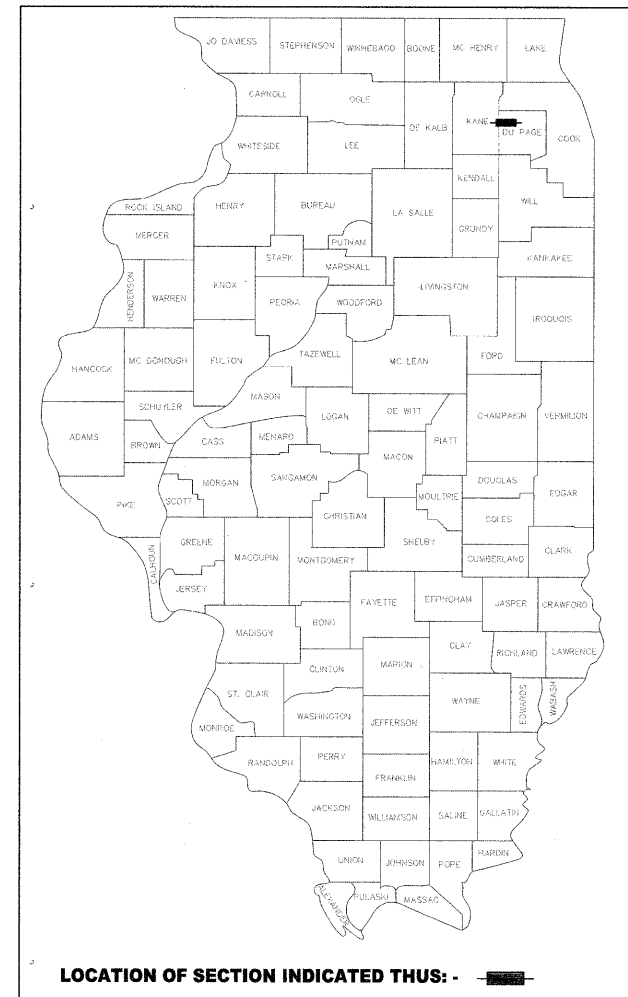
IDOT STATEWIDE STANDARDS

- 000001-05 STANDARD SYMBOLS, ABBREVIATIONS, AND PATTERNS
- 001006 DECIMAL OF AN INCH AND OF A FOOT
- 406201-01 MAILBOX TURNOUT
- 424001-05 CURB RAMPS FOR SIDEWALKS
- 442201-03 CLASS C AND D PATCHES
- 604001-03 FRAME AND LIDS TYPE I
- 606001-04 CONCRETE CURB TYPE B AND COMBINATION CONCRETE CURB AND GUTTER
- 701011-02 OFF-ROAD MOVING OPERATIONS, 2L, 2W, DAY ONLY
- 701301-03 LANE CLOSURE, 2L, 2W, SHORT TIME OPERATIONS
- 701311-03 LANE CLOSURE, 2L, 2W, MOVING OPERATIONS-DAY ONLY
- 701501-05 URBAN LANE CLOSURE, 2L, 2W, UNDIVIDED
- 701801-04 LANE CLOSURE MULTILANE 1W OR 2W CROSSWALK OR SIDEWALK CLOSURE
- 701901-01 TRAFFIC CONTROL DEVICES
- 780001-02 TYPICAL PAVEMENT MARKINGS

STATE OF ILLINOIS DEPARTMENT OF TRANSPORTATION DIVISION OF HIGHWAYS PLANS FOR PROPOSED FEDERAL AID HIGHWAY

**F.A.U. ROUTE 2534 (ARBOR AVENUE)
WASHINGTON STREET TO HAWTHORNE LANE
LAPP RESURFACING
SECTION NO. 09-00077-00-RS
PROJECT NO. ARA-9003(406)
JOB NO. C-91-801-09
CITY OF WEST CHICAGO
DUPAGE COUNTY**

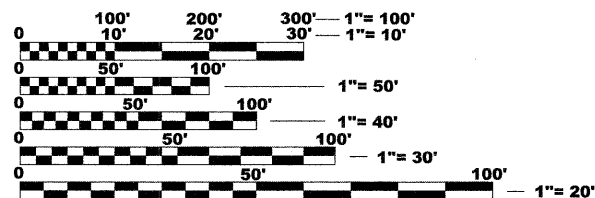
THE PROJECT IS LOCATED IN THE CITY OF WEST CHICAGO



DESIGN DESIGNATION:
COLLECTOR - URBAN

ADT:
4,300 VPD (2005)
7,700 VPD (2030)

POSTED SPEED LIMIT(S):
30 MPH

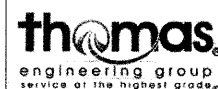


FULL SIZE PLANS HAVE BEEN PREPARED USING STANDARD ENGINEERING SCALES. REDUCED SIZED PLANS WILL NOT CONFORM TO STANDARD SCALES. IN MAKING MEASUREMENTS ON REDUCED PLANS, THE ABOVE SCALES MAY BE USED.

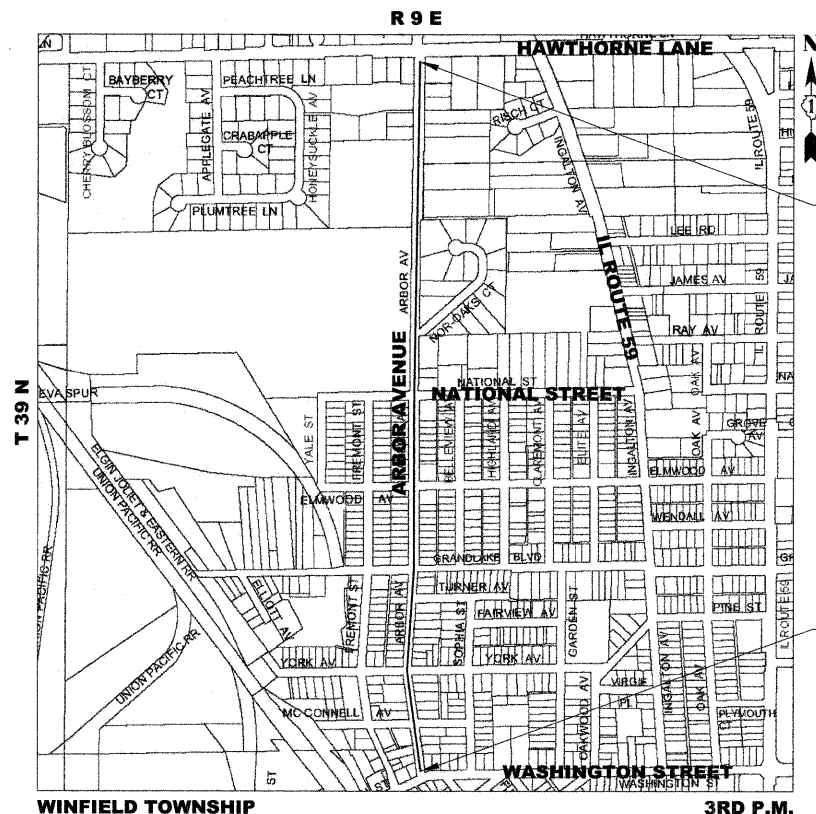
J.U.L.I.E.
JOINT UTILITY LOCATION INFORMATION FOR EXCAVATION
1-800-892-0123
OR 811

PLANS PREPARED BY:

CITY OF WEST CHICAGO
475 MAIN STREET
PHONE: 630-293-2200
FAX: 630-293-3028
P.O. BOX 488
WEST CHICAGO, IL 60185



thomas engineering group, llc
238 south kenilworth avenue
suite 100
oak park, il 60302
phone: 708-533-1700



PROJECT ENDS
STA. 64+59

PROJECT BEGINS
STA. 10+50

PROJECT ENGINEER: BRIAN L. PAWULA, P.E., (847) 922-6125
PROJECT MANAGER: KEVIN C. VANDEWOESTYNE, P.E., (847) 815-9500

CONTRACT NO. 63345

PROJECT LENGTH
GROSS = 5,409 FT = 1.02 MI
NET = 5,409 FT = 1.02 MI

STATE OF ILLINOIS
DEPARTMENT OF TRANSPORTATION
DIVISION OF HIGHWAYS

APPROVED 3/12 20 10

[Signature]
CITY OF WEST CHICAGO, DIRECTOR OF PUBLIC WORKS

PASSED MARCH 31 2010

[Signature]
DISTRICT 1 ENGINEER OF LOCAL ROADS AND STREETS

RELEASING FOR BID
BASED ON LIMITED REVIEW APRIL 2, 2010

[Signature]
DEPUTY DIRECTOR OF HIGHWAYS, REGION 1 ENGINEER

BY: *[Signature]* DATE: 3/12/10
THOMAS ENGINEERING GROUP, LLC
LICENSE EXPIRES: 11/30/11

**PRINTED BY THE AUTHORITY
OF THE STATE OF ILLINOIS**

FEDERAL AID DESIGN ENGINEER: MARLIN SOLOMON, P.E. (847) 705-4407

GENERAL NOTES:

1. ALL IMPROVEMENTS SHALL BE IN ACCORDANCE WITH IDOT STANDARD SPECIFICATIONS FOR ROAD AND BRIDGE CONSTRUCTION AND THE SUPPLEMENTAL SPECIFICATIONS AND RECURRING SPECIAL PROVISIONS, ADOPTED JANUARY 1, 2007 OR LATER.
2. BEFORE STARTING EXCAVATION, THE CONTRACTOR SHALL CALL "J.U.L.I.E." AT 800-892-0123 OR 811 FOR FIELD LOCATIONS OF BURIED ELECTRIC, TELEPHONE, AND GAS FACILITIES (48 HOUR NOTIFICATION IS REQUIRED).
3. THE CONTRACTOR SHALL BE RESPONSIBLE FOR THE PROTECTION OF ALL UNDERGROUND OR SURFACE UTILITIES EVEN THOUGH THEY MAY NOT BE SHOWN ON THE PLANS. ALL UTILITIES THAT ARE DAMAGED DURING CONSTRUCTION SHALL BE REPAIRED OR REPLACED TO THE SATISFACTION OF THE OWNER. THIS WORK SHALL BE AT THE CONTRACTOR'S EXPENSE.
4. THE CONTRACTOR SHALL IMMEDIATELY NOTIFY THE ENGINEER IF UNMARKED UTILITIES ARE DISCOVERED AND IF UTILITIES ARE DAMAGED DURING CONSTRUCTION.
5. THE THICKNESSES OF HMA MIXTURES SHOWN IN THE PLANS ARE NOMINAL. DEVIATIONS MAY OCCUR DUE TO IRREGULARITIES IN THE SURFACES OR BASIS ON WHICH THEY ARE TO BE PLACED. PLAN THICKNESSES SHOULD BE CONSIDERED THE MINIMUM THICKNESSES PERMITTED.
6. QUANTITIES FOR MIXTURE FOR CRACKS, JOINTS, AND FLANGEWAYS AND STRIP REFLECTIVE CRACK CONTROL TREATMENT HAVE BEEN PROVIDED. AFTER THE HMA SURFACE REMOVAL OPERATIONS ARE COMPLETE ALL OPEN CRACKS AND OPEN EXPANSION JOINTS HAVING A WIDTH OF 1/2 IN. OR MORE SHALL BE CLEANED AND FILLED AND STRIP REFLECTIVE CRACK CONTROL WILL BE APPLIED ACCORDING TO ARTICLE 406 AND 443, RESPECTIVELY. THE ACTUAL NEED FOR THESE ITEMS SHALL BE DETERMINED IN THE FIELD BY THE ENGINEER. IF CRACK FILLING IS NOT REQUIRED THE QUANTITIES WILL BE DEDUCTED PER THE TERMS OF ARTICLE 104.02.
7. QUANTITIES FOR PAVEMENT PATCHING (CLASS D PATCHES AND PAVEMENT PATCHING (PARTIAL DEPTH)) HAVE BEEN PROVIDED IN THE CONTRACT BASED ON FIELD OBSERVATIONS OF EXISTING CONDITIONS. LOCATIONS SHOWN IN THE PLANS MAY DIFFER AND WILL BE DETERMINED IN THE FIELD AT THE TIME OF CONSTRUCTION BY THE ENGINEER. IF PAVEMENT PATCHING IS NOT REQUIRED THE QUANTITY WILL BE DEDUCTED PER THE TERMS OF ARTICLE 104.02.
8. AT LOCATIONS WHERE THERE IS CURB AND GUTTER REMOVAL AND REPLACEMENT ADJACENT TO SIDEWALK, THE NEW CURB SHALL BE DEPRESSED AND THE NEW SIDEWALK RAMPED TO PROVIDE ACCESSIBILITY. THIS WORK SHALL BE DONE IN ACCORDANCE WITH IDOT STANDARD 424001.
9. THE CONTRACTOR SHALL SET AND CHECK ALL CURB FORMS AND STRING LINES PRIOR TO PLACING CONCRETE TO ENSURE POSITIVE DRAINAGE ALONG THE ROADWAY. IMPROPERLY DRAINING CURB SHALL BE REMOVED AND REPLACED AT THE CONTRACTOR'S EXPENSE.
10. QUANTITIES FOR SIDEWALK REMOVAL, PCC SIDEWALK 5 INCH, SPECIAL, DETECTABLE WARNINGS, AND COMBINATION CONCRETE CURB AND GUTTER, OF THE TYPE SPECIFIED, (SPECIAL) HAVE BEEN PROVIDED. THE ACTUAL NEED FOR REPLACEMENT WILL BE DETERMINED IN THE FIELD AT THE TIME OF CONSTRUCTION BY THE ENGINEER. IF CONSTRUCTION IS NOT REQUIRED, THE QUANTITIES WILL BE DEDUCTED PER THE TERMS OF ARTICLE 104.02.
11. QUANTITIES FOR DRAINAGE AND UTILITY STRUCTURES TO BE ADJUSTED HAVE BEEN PROVIDED. LOCATIONS WILL BE DETERMINED IN THE FIELD AT THE TIME OF CONSTRUCTION BY THE ENGINEER. ALL ADJUSTMENTS SHALL BE PERFORMED IN ACCORDANCE WITH SECTION 602 OF THE STANDARD SPECIFICATIONS. IF ADJUSTMENTS ARE NOT REQUIRED, THE QUANTITY WILL BE DEDUCTED PER THE TERMS OF ARTICLE 104.02. THE FRAMES AND LIDS OF PRIVATE UTILITY STRUCTURES SHALL BE ADJUSTED BY THEIR RESPECTIVE OWNERS.
12. ALL SANITARY MANHOLES TO BE ADJUSTED SHALL BE WATERPROOFED IN ACCORDANCE WITH THE SPECIAL PROVISION FOR SANITARY MANHOLES TO BE ADJUSTED, SPECIAL.
13. PRIOR TO HMA SURFACE REMOVAL, ALL OPEN DRAINAGE UTILITY STRUCTURES SHALL BE PROTECTED WITH FILTER FABRIC TO PREVENT ROADWAY DEBRIS FROM ENTERING UNDERGROUND UTILITIES. THIS WORK SHALL BE INCLUDED IN THE COST OF HOT-MIX ASPHALT SURFACE REMOVAL 2". IF THE ENGINEER FINDS EVIDENCE OF CONSTRUCTION DEBRIS IN THE UTILITY STRUCTURES AFTER THE HMA SURFACE REMOVAL AND / OR AFTER THE BINDER COURSE AND SURFACE COURSE ARE COMPLETED, THE CONTRACTOR SHALL BE HELD RESPONSIBLE FOR REMOVING DEBRIS.
14. THERE ARE MANHOLES AND VALVES LOCATED WITHIN THE RESURFACING LIMITS. CARE SHOULD BE TAKEN DURING MILLING OPERATIONS. IT IS THE RESPONSIBILITY OF THE CONTRACTOR TO INSPECT ALL EXISTING MANHOLE LIDS, TOGETHER WITH THE ENGINEER, PRIOR TO STARTING CONSTRUCTION AND A RECORD KEPT OF THEIR CONDITION. ALL DEBRIS WHICH ACCUMULATES ON THE LIDS AND IN THE MANHOLE PICK HOLES DURING THE TIME THE CONTRACT IS IN FORCE, SHALL BE REMOVED AND DISPOSED OF BY THE CONTRACTOR AT HIS OWN EXPENSE.
15. PAVEMENT PATCHING SHALL BE SCHEDULED IMMEDIATELY FOLLOWING HMA SURFACE REMOVAL TO REDUCE DEGRADATION OF THE EXISTING BASE.
16. THE MAXIMUM ALLOWABLE VERTICAL PAVEMENT LANE DROP DIFFERENTIAL WILL BE 1-1/2".
17. THE CONTRACTOR SHALL PLACE FINAL THERMOPLASTIC PAVEMENT MARKINGS A MAXIMUM OF THREE (3) DAYS AFTER PLACEMENT OF THE FINAL HMA SURFACE COURSE.
18. THE CONTRACTOR SHALL MAINTAIN PROPER DRAINAGE AT ALL TIMES DURING THE COURSE OF CONSTRUCTION, AND SHALL PREVENT STORMWATER FROM RUNNING INTO OR STANDING IN EXCAVATED AREAS.
19. BUTT JOINTS WILL BE INSTALLED AT THE ENDS OF ALL RESURFACING (WHERE RESURFACING MEETS EXISTING PAVEMENT) IN ACCORDANCE WITH THE BUTT JOINT AND HMA TAPER DETAILS SHEET INCLUDED IN THE PLANS (BD-32).
20. ALL PAVEMENTS, CURB AND GUTTER, SIDEWALKS, AND DRIVEWAYS TO BE REMOVED SHALL BE SAW CUT PRIOR TO REMOVAL TO PREVENT DAMAGE TO THE ITEMS TO REMAIN. THE COST OF SAW CUTTING SHALL BE INCLUDED IN THE COST OF THE ITEMS BEING CONSTRUCTED.
21. PARKWAY RESTORATION SHALL INCLUDE REPLACEMENT OF DAMAGED AND DESTROYED LANDSCAPE, IN KIND, OF THE EXISTING TURF ADJACENT TO THE WORKING LIMITS AND WHERE THE CONTRACTOR'S EQUIPMENT HAS DESTROYED OR DAMAGED THE TURF. THE CONTRACTOR SHALL PREPARE THE GROUND ACCORDING TO SECTION 211 OF THE STANDARD SPECIFICATIONS. SALT TOLERANT SEED AND FERTILIZER SHALL BE PLACED ACCORDING TO SECTION 250 OF THE STANDARD SPECIFICATIONS. THIS WORK SHALL NOT BE PAID FOR SEPARATELY BUT SHALL BE INCLUDED IN THE CONTRACT UNIT PRICE FOR ITEMS BEING CONSTRUCTED SUCH AS COMBINATION CONCRETE CURB AND GUTTER, OF THE TYPE SPECIFIED, (SPECIAL) AND PCC SIDEWALK 5 INCH, SPECIAL.
22. ALL STREETS AND COMMERCIAL PARKING LOT ENTRANCES SHALL REMAIN OPEN DURING CONSTRUCTION. TRAFFIC SHALL BE MAINTAINED IN ACCORDANCE WITH IDOT STANDARDS 701011, 701301, 701311, 701501, 701801, AND 701901.

23. WORK SHALL BE CAREFULLY PLANNED BY THE CONTRACTOR TO REDUCE DISRUPTION TO RESIDENTS, BUSINESSES, AND THE PUBLIC SEEKING TO ACCESS THE BUSINESSES. AT LEAST ONE LANE OF TRAFFIC MUST REMAIN OPEN AT ALL TIMES.
24. DURING AND AFTER CONSTRUCTION OPERATIONS, LOOSE MATERIAL ON ROADWAYS AS A RESULT OF CONTRACTOR OPERATIONS, INCLUDING BUT NOT LIMITED TO HMA SURFACE REMOVAL, BINDER COURSE AND SURFACE COURSE INSTALLATION, SHALL BE REMOVED AND DEPOSITED OFF SITE BY THE CLOSE OF EACH BUSINESS DAY. THIS WORK WILL NOT BE PAID FOR SEPARATELY PER THE TERMS OF ARTICLE 107.15. THIS APPLIES TO EXCESSIVE PRIMER LEFT ON ROADWAYS.
25. ALL FRAMES TO BE FURNISHED AS PART OF THIS CONTRACT FOR CONSTRUCTION, ADJUSTMENT, OR RECONSTRUCTION OF ANY MANHOLE, CATCH BASIN, INLET, VALVE VAULT, OR METER VAULT SHALL HAVE CAST INTO THE LID "CITY OF WEST CHICAGO" AND BEAR THE THE WORD "STORM", "SANITARY", OR "WATER" DEPENDING ON THE TYPE SPECIFIED.
26. THE CONTRACTOR SHALL PLACE "NO PASSING ZONES NOT STRIPED NEXT _ MILES" SIGNS AT THE BEGINNING OF UNSTRIPED AREAS, JUST BEYOND EACH MAJOR INTERSECTION WITHIN THE UPSTRIPED AREA, AND AT OTHER LOCATIONS AS DIRECTED BY THE ENGINEER. THE SIGNS SHALL BE PLACED JUST PRIOR TO REMOVAL OR COVERING OF THE STRIPING AND SHALL REMAIN IN PLACE UNTIL FULL NO PASSING ZONE STRIPING HAS BEEN RESTORED. THESE SIGNS SHALL NOT BE PAID FOR SEPARATELY BUT SHALL BE INCLUDED IN THE CONTRACT UNIT PRICE FOR MOBILIZATION.
27. THE RESIDENT ENGINEER SHALL CONTACT THE TRAFFIC CONTROL SUPERVISOR AT 847-705-4470 A MINIMUM OF 72 HOURS PRIOR TO THE PLACEMENT OF ANY TEMPORARY TRAFFIC CONTROL DEVICES.
28. ALL CATCH BASIN OR INLET FRAMES TO BE FURNISHED AS PART OF THIS CONTRACT FOR CONSTRUCTION, ADJUSTMENT, OR RECONSTRUCTION SHALL BE NEENAH R-3281-AL OR EJIW 7210, OR APPROVED EQUAL, WITH VANE GRATE ON FLOW THROUGH STRUCTURES. NEENAH TYPE C OR EJIW TYPE M1 GRATE, OR APPROVED EQUAL, TO BE USED AT ALL OTHER LOCATIONS. EJIW TYPE M3 GRATE, OR APPROVED EQUAL, TO BE USED AT ALL DRIVEWAY LOCATIONS. ANY FRAME CONSIDERED AS APPROVED EQUAL SHALL INCLUDE A BOTTOM FLANGE AT THE FRONT FACE OF THE FRAME.
29. THE CONTRACTOR SHALL FURNISH, AT THEIR EXPENSE, WHITE, PINK, OR PURPLE PAVEMENT MARKING PAINT IN AEROSOL CANS, FOR USE BY THE ENGINEER. THE CONTRACTOR AND SUBCONTRACTORS SHALL ONLY USE THESE SAME COLORS FOR THEIR OWN MARKINGS, THEREFORE, NOT USING J.U.L.I.E. UTILITY COLORS.
30. DETECTABLE WARNINGS SHALL CONSIST OF A SURFACE OF TRUNCATED DOMES MEETING THE REQUIREMENTS OF THE ACCESSIBILITY GUIDELINES (ADAAG) AND SHALL BE E-Z-SET POLYMER DETECTABLE WARNING PANELS OR APPROVED EQUAL. THE COLOR OF THE DETECTABLE WARNINGS SHALL BE FEDERAL STANDARD COLOR 30166 IN ORDER TO MEET ADAAG REQUIREMENTS. THE CONTRACTOR SHALL RECEIVE CITY OF WEST CHICAGO APPROVAL OF MATERIALS AND COLOR PRIOR TO INSTALLING THE DETECTABLE WARNINGS.

DENOTES ITEM(S) OR WORK NOT PAID FOR SEPARATELY

SUMMARY OF QUANTITIES

SPEC. ITEM	PAY CODE	DESCRIPTION	UNIT	TOTAL QUANTITY 1000
	35100100	AGGREGATE BASE COURSE, TYPE A	TON	5
	40600100	BITUMINOUS MATERIALS (PRIME COAT)	GALLON	1715
	40600300	AGGREGATE (PRIME COAT)	TON	34
	40600400	MIXTURE FOR CRACKS, JOINTS, AND FLANGEWAYS	TON	9
	40600625	LEVELING BINDER (MACHINE METHOD), N50	TON	720
	40600895	CONSTRUCTING TEST STRIP	EACH	2
	40600982	HOT-MIX ASPHALT SURFACE REMOVAL - BUTT JOINT	SQ YD	165
	40603335	HOT-MIX ASPHALT SURFACE COURSE, MIX "D", N50	TON	1440
	42400430	PORTLAND CEMENT CONCRETE SIDEWALK 5 INCH, SPECIAL	SQ FT	1700
	42400800	DETECTABLE WARNINGS	SQ FT	100
	44000157	HOT-MIX ASPHALT SURFACE REMOVAL, 2"	SQ YD	17148
	44000500	COMBINATION CURB AND GUTTER REMOVAL	FOOT	300
	44000600	SIDEWALK REMOVAL	SQ FT	1700
	44201713	CLASS D PATCHES, TYPE I, 6 INCH	SQ YD	50
	44201717	CLASS D PATCHES, TYPE II, 6 INCH	SQ YD	100
	44201721	CLASS D PATCHES, TYPE III, 6 INCH	SQ YD	65
	44201723	CLASS D PATCHES, TYPE IV, 6 INCH	SQ YD	450
	44212900	PAVEMENT PATCHING (PARTIAL DEPTH)	SQ YD	50
	44300300	AREA REFLECTIVE CRACK CONTROL TREATMENT, SYSTEM A	SQ YD	17148
	44301200	STRIP REFLECTIVE CRACK CONTROL TREATMENT SYSTEM B, 24 INCH	FOOT	500
	48102100	AGGREGATE WEDGE SHOULDER, TYPE B	TON	53
	60251500	CATCH BASINS TO BE ADJUSTED WITH NEW TYPE 11 FRAME AND GRATE	EACH	1
	60257700	MANHOLE ADJUSTING RING	EACH	2
	60300305	FRAMES AND LIDS TO BE ADJUSTED	EACH	2
	60300310	FRAMES AND LIDS TO BE ADJUSTED (SPECIAL)	EACH	12
	60406100	FRAMES AND LIDS, TYPE 1, CLOSED LID	EACH	2
	60604200	COMBINATION CONCRETE CURB AND GUTTER, TYPE B-6.12 (SPECIAL)	FOOT	300
	67100100	MOBILIZATION	L SUM	1
	70102620	TRAFFIC CONTROL AND PROTECTION, STANDARD 701501	L SUM	1
	70102640	TRAFFIC CONTROL AND PROTECTION, STANDARD 701801	L SUM	1
	70300100	SHORT-TERM PAVEMENT MARKING	FOOT	1540
	70300220	TEMPORARY PAVEMENT MARKING - LINE 4"	FOOT	9118
	70301000	WORK ZONE PAVEMENT MARKING REMOVAL	SQ FT	1540
*	78000100	THERMOPLASTIC PAVEMENT MARKING - LETTERS AND SYMBOLS	SQ FT	63
*	78000200	THERMOPLASTIC PAVEMENT MARKING - LINE 4"	FOOT	9118
*	78000400	THERMOPLASTIC PAVEMENT MARKING - LINE 6"	FOOT	765
*	78000600	THERMOPLASTIC PAVEMENT MARKING - LINE 12"	FOOT	164
*	78000650	THERMOPLASTIC PAVEMENT MARKING - LINE 24"	FOOT	194
	X0321556	SANITARY MANHOLES TO BE ADJUSTED	EACH	8

* = SPECIALTY ITEM

FILE NAME = 02_Gen Notes_Sum of Qty_Arbor LAPP	DESIGNED - DMM	REVISED -	STATE OF ILLINOIS DEPARTMENT OF TRANSPORTATION	ARBOR AVENUE - WASHINGTON STREET TO HAWTHORNE LANE		F.A.U. RTE. 2534	SECTION 09-0077-00-RS	COUNTY	TOTAL SHEETS 13	SHEET NO. 2
PLOT DATE = 4/9/10	DRAWN - DMM	REVISED -		GENERAL NOTES AND SUMMARY OF QUANTITIES		CONTRACT NO. 63345		DUPAGE		
	CHECKED - KCV	REVISED -		SCALE: NTS		FED. ROAD DIST. NO. 1		ILLINOIS	FED. AID PROJECT ARA-9003(406)	
	DATE - 03/12/10	REVISED -								

thomas engineering group, llc
235 south kenilworth avenue
suite 100
oak park, il 60302
phone: 708-533-1700

SIDEWALK SCHEDULE OF QUANTITIES							
NUMBER	MIDPOINT OF IMPACTED SIDEWALK		LENGTH (FOOT)	WIDTH (FOOT)	44000600	42400430	42400800
	STATION	LT OR RT			SIDEWALK REM	PC CONC SIDEWALK 5 SP	DETECTABLE WARNINGS
					AREA (SQ FT)	AREA (SQ FT)	AREA (SQ FT)
1	11+30	RT	9.0	4.5	40.5	40.5	
2	12+62	RT	16.0	4.5	72.0	72.0	
3	13+96	RT	9.0	4.5	40.5	40.5	8
4	13+96	RT	21.0	4.5	94.5	94.5	8
5	13+98	LT	5.0	7.0	35.0	35.0	8
6	14+10	LT	5.0	7.0	35.0	35.0	12
7	14+39	RT	5.0	6.5	32.5	32.5	12
8	14+45	LT	5.0	6.5	32.5	32.5	12
9	14+52	LT	5.0	6.5	32.5	32.5	8
10	14+53	RT	5.0	5.5	27.5	27.5	8
11	15+85	RT	5.0	4.5	22.5	22.5	
12	18+95	LT	14.0	4.5	63.0	63.0	
13	19+15	RT	25.0	5.0	125.0	125.0	
14	19+38	LT	9.0	4.5	40.5	40.5	
15	19+44	RT	11.0	5.0	55.0	55.0	
16	19+66	RT	15.0	5.0	75.0	75.0	
17	20+00	RT	6.0	5.0	30.0	30.0	
18	21+09	LT	15.0	4.5	67.5	67.5	
19	22+60	RT	20.0	5.0	100.0	100.0	
20	24+36	LT	28.0	4.5	126.0	126.0	
21	26+62	RT	6.0	5.0	30.0	30.0	
22	27+45	LT	17.0	4.0	68.0	68.0	
23	31+14	LT	10.0	4.0	40.0	40.0	
24	33+16	RT	10.0	5.0	50.0	50.0	
25	33+92	RT	6.0	5.0	30.0	30.0	
26	34+46	RT	6.0	5.0	30.0	30.0	
27	35+28	RT	20.0	4.0	80.0	80.0	
28	39+20	LT	6.0	9.0	54.0	54.0	12
29	39+31	LT	6.0	9.0	54.0	54.0	12
30	60+92	LT	10.0	4.5	45.0	45.0	
31	61+53	LT	16.0	4.5	72.0	72.0	
COLUMN TOTAL					1700.0	1700.0	100

CURB AND GUTTER SCHEDULE OF QUANTITIES					
NUMBER	START OF IMPACTED CURB AND GUTTER		LENGTH (FOOT)	44000500	60604200
	STATION	LT OR RT		COMB CURB GUTTER REM	COMB CC&G TB6.12 SPL
				LENGTH (FOOT)	LENGTH (FOOT)
1	35+54	LT	300	300	300
COLUMN TOTAL				300	300

STRUCTURE ADJUSTMENT SCHEDULE OF QUANTITIES					
NUMBER	IMPACTED STRUCTURES		60251500	60300310	X0321556
	STATION	LT, CL, OR RT	CB ADJ NEW T11F&G (EACH)	FR & LIDS ADJUST SPL (EACH)	SANITARY MANHOLE ADJ (EACH)
1	10+98	CL			1
2	14+13	RT		1	
3	14+26	CL			1
4	18+15	LT		1	
5	18+26	CL			1
6	18+40	LT		1	
7	19+94	LT		1	
8	20+67	CL			1
9	23+45	LT		1	
10	25+81	LT		1	
11	25+85	LT		1	
12	25+91	CL			1
13	27+91	LT		1	
14	27+99	CL			1
15	28+86	LT		1	
16	29+00	CL			1
17	32+11	LT		1	
18	32+12	LT		1	
19	32+20	CL			1
20	35+54	LT	1		
21	35+54	LT		1	
COLUMN TOTAL			1	12	8

FILE NAME = 03_Sch of Qties_Arbor LAPP
PLOT DATE = 3/1/10



DESIGNED - JJK
DRAWN - BLP
CHECKED - KCV
DATE - 03/12/10

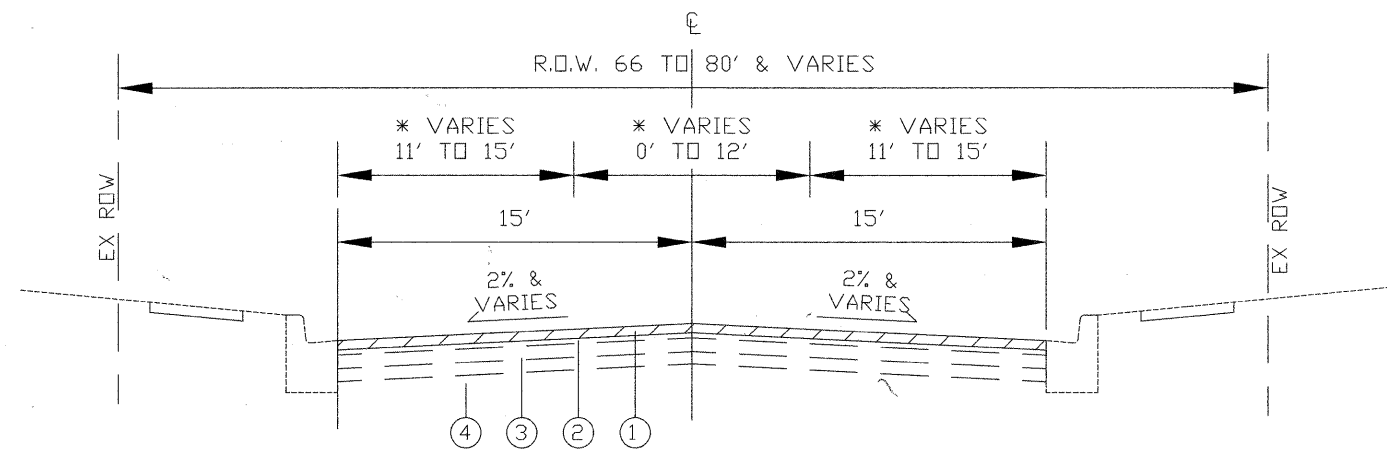
REVISED -
REVISED -
REVISED -
REVISED -

STATE OF ILLINOIS
DEPARTMENT OF TRANSPORTATION

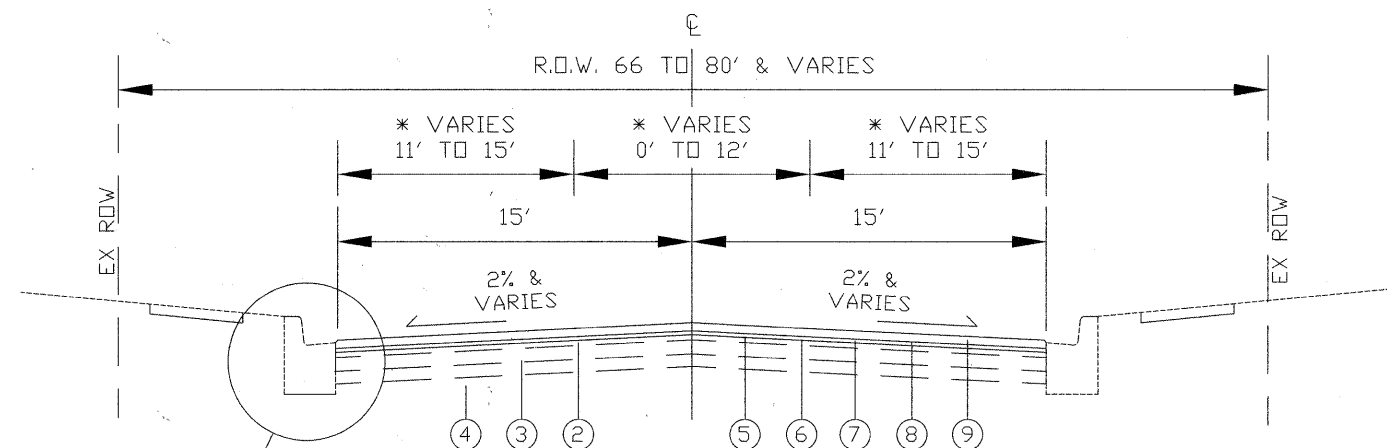
ARBOR AVENUE - WASHINGTON STREET TO HAWTHORNE LANE
SCHEDULE OF QUANTITIES

SCALE: N.T.S.

F.A.U. RTE. 2534	SECTION 09-00077-00-RS	COUNTY DUPAGE	TOTAL SHEETS 13	SHEET NO. 3
CONTRACT NO. 63345				
FED. ROAD DIST. NO. 1 ILLINOIS FED. AID PROJECT ARA-9003(406)				



EXISTING TYPICAL SECTION
 STA. 10+50 TO STA. 39+60, ARBOR AVENUE
 * STA. 58+50 TO STA. 64+24, ARBOR AVENUE

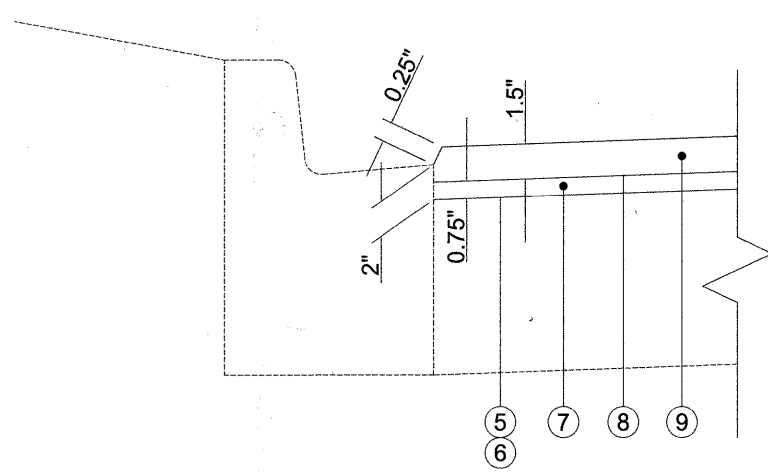


PROPOSED TYPICAL SECTION
 STA. 10+50 TO STA. 39+60, ARBOR AVENUE
 * STA. 58+50 TO STA. 64+24, ARBOR AVENUE

LEGEND:

- ① PR HOT-MIX ASPHALT SURFACE REMOVAL, 2"
- ② EX HOT-MIX ASPHALT SURFACE COURSE AND (LEVELING) BINDER COURSE, 3" AND VARIES (2" TO BE MILLED)
- ③ EX HOT-MIX ASPHALT BASE COURSE, 6" & VARIES
- ④ EX SUBBASE GRANULAR MATERIAL, TYPE B, 8" & VARIES
- ⑤ PR AGGREGATE (PRIME COAT)
- ⑥ PR BITUMINOUS MATERIALS (PRIME COAT)
- ⑦ PR LEVELING BINDER (MACHINE METHOD), N50, 0.75"
- ⑧ PR AREA REFLECTIVE CRACK CONTROL TREATMENT, SYSTEM A
- ⑨ PR HOT-MIX ASPHALT SURFACE COURSE, MIX "D", N50, 1.5"

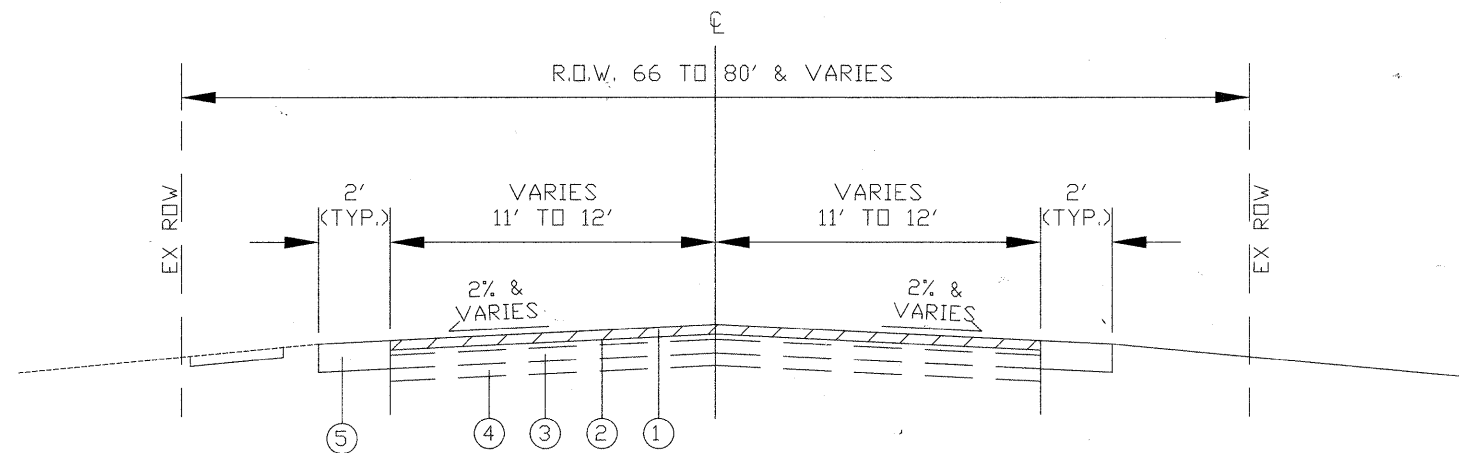
DETAIL A



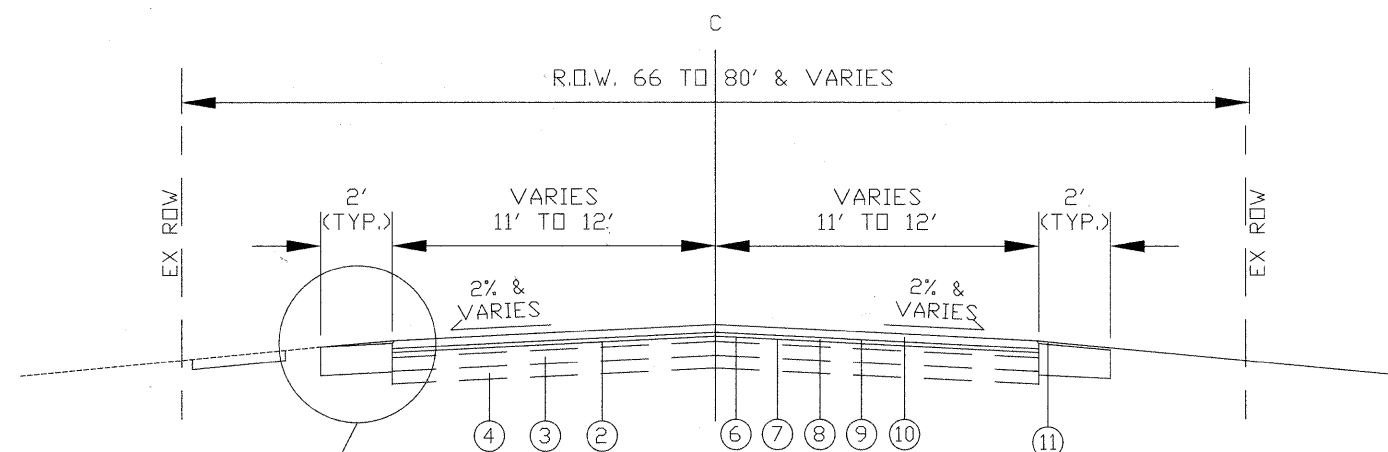
CONTRACTOR SHALL MILL BEFORE PATCHING

HOT-MIX ASPHALT MIXTURE REQUIREMENTS	
MIXTURE TYPE	AIR VOIDS @ Ndes
PAVEMENT RESURFACING	
HOT-MIX ASPHALT SURFACE COURSE, MIX "D", N50 (IL 9.5 mm)	4% @ 50 Gyr.
LEVELING BINDER (MACHINE METHOD), N50	4% @ 50 Gyr.
PATCHING	
CLASS D PATCH (HMA BINDER IL-19 mm)	4% @ 70 Gyr.
PAVEMENT PATCHING (PARTIAL DEPTH) (HMA BINDER IL-19 mm)	4% @ 70 Gyr.

THE UNIT WEIGHT USED TO CALCULATE ALL HMA SURFACE MIXTURE QUANTITIES IS 112 LBS/SQ YD/IN.
 THE "AC TYPE" FOR POLYMERIZED HMA MIXES SHALL BE "SBS/SBR PG 70 -22" AND FOR NON-POLYMERIZED HMA THE "AC TYPE" SHALL BE "PG 64 -22" UNLESS MODIFIED BY DISTRICT ONE SPECIAL PROVISIONS.
 FOR "PERCENT OF RAP" SEE DISTRICT ONE SPECIAL PROVISIONS.



EXISTING TYPICAL SECTION
STA. 39+60 TO STA. 58+50, ARBOR AVENUE

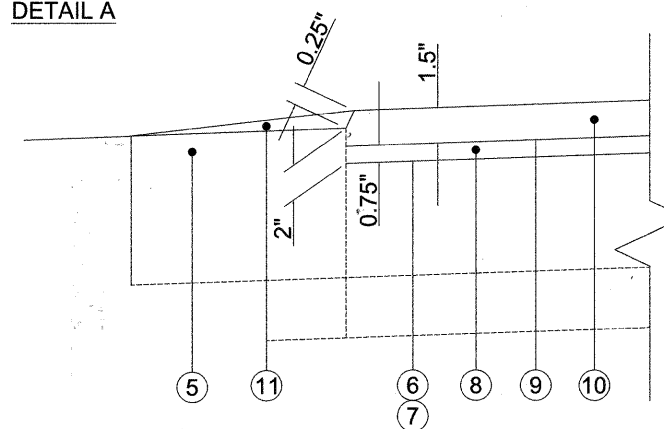


SEE DETAIL A
PROPOSED TYPICAL SECTION
STA. 39+60 TO STA. 58+50, ARBOR AVENUE

LEGEND:

- ① PR HOT-MIX ASPHALT SURFACE REMOVAL, 2"
- ② EX HOT-MIX ASPHALT SURFACE COURSE AND (LEVELING) BINDER COURSE, 3" AND VARIES (2" TO BE MILLED)
- ③ EX HOT-MIX ASPHALT BASE COURSE, 6" & VARIES
- ④ EX SUBBASE GRANULAR MATERIAL, TYPE B, 8" & VARIES
- ⑤ EX AGGREGATE SHOULDERS
- ⑥ PR AGGREGATE (PRIME COAT)
- ⑦ PR BITUMINOUS MATERIALS (PRIME COAT)
- ⑧ PR LEVELING BINDER (MACHINE METHOD), N50, 0.75"
- ⑨ PR AREA REFLECTIVE CRACK CONTROL TREATMENT, SYSTEM A
- ⑩ PR HOT-MIX ASPHALT SURFACE COURSE, MIX "D", N50, 1.5"
- ⑪ PR AGGREGATE WEDGE SHOULDERS, TYPE B (SEE DETAIL A THIS SHEET)

DETAIL A



FILE NAME = 04-05_Typical Sections_Arbor LAPP
PLOT DATE = 3/11/10

thomas engineering group
thomas engineering group, llc
238 south kentworth avenue
suite 100
oak park, il 60302
phone: 708-533-1700

DESIGNED - DMM	REVISED -
DRAWN - DMM	REVISED -
CHECKED - KCV	REVISED -
DATE - 03/12/10	REVISED -

STATE OF ILLINOIS
DEPARTMENT OF TRANSPORTATION

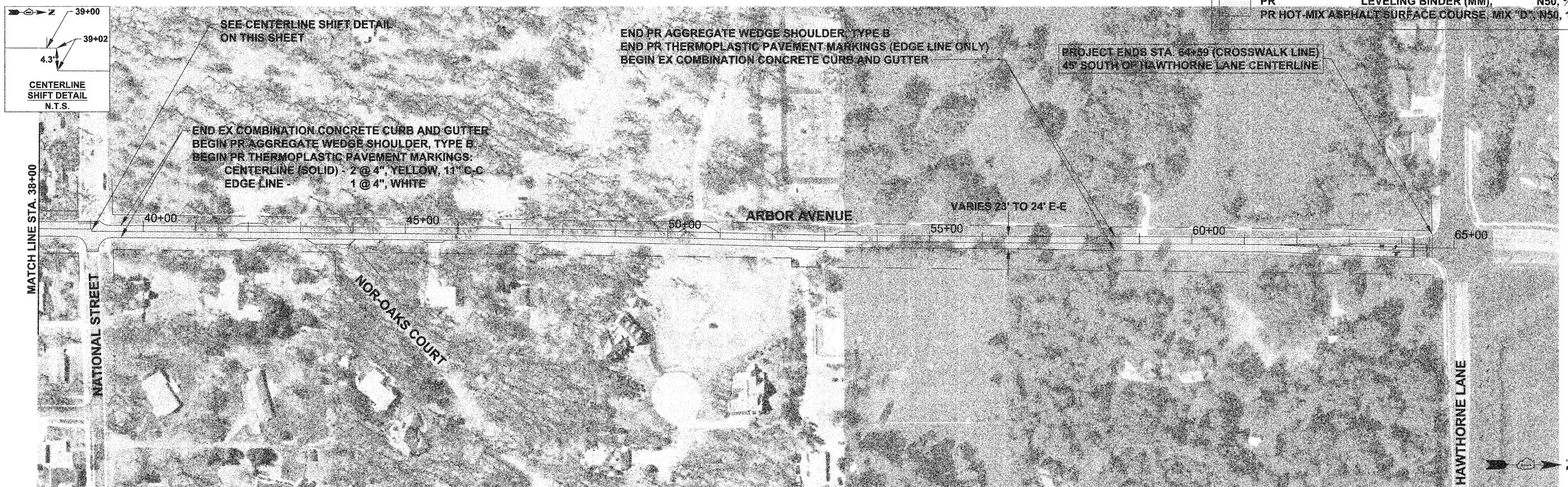
ARBOR AVENUE - WASHINGTON STREET TO HAWTHORNE LANE
TYPICAL SECTIONS

F.A.U. RTE. 2534	SECTION 09-00077-00-RS	COUNTY DUPAGE	TOTAL SHEETS 13	SHEET NO. 5
CONTRACT NO. 63345				
FED. ROAD DIST. NO. 1 ILLINOIS FED. AID PROJECT ARA-9003(406)				

SCALE: NTS



- PR HOT-MIX ASPHALT SURFACE REMOVAL - BUTT JOINT
- PR HOT-MIX ASPHALT SURFACE REMOVAL, 2" LEVELING BINDER (MM), N50, 3/4"
- PR HOT-MIX ASPHALT SURFACE COURSE, MIX "D", N50, 1 1/2"



FILE NAME = 06-07_Plan Sheets_Arbor LAPP
 PLOT DATE = 3/11/10

thomas engineering group, llc
 238 south kenilworth avenue
 suite 100
 oak park, il 60302
 phone: 708-533-1700

DESIGNED - BLP	REVISED -
DRAWN - BLP	REVISED -
CHECKED - DMM	REVISED -
DATE - 03/12/10	REVISED -

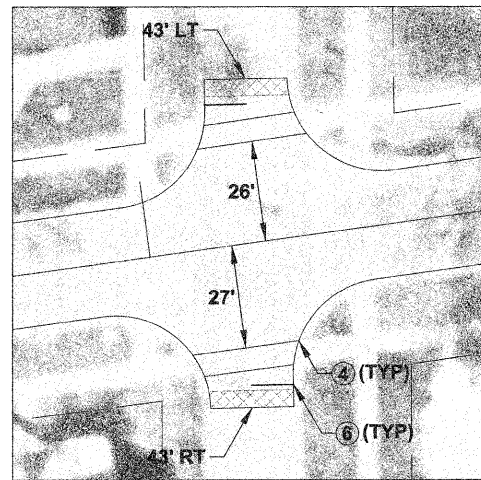
**STATE OF ILLINOIS
 DEPARTMENT OF TRANSPORTATION**

**ARBOR AVENUE - WASHINGTON STREET TO HAWTHORNE LANE
 PLAN SHEET**

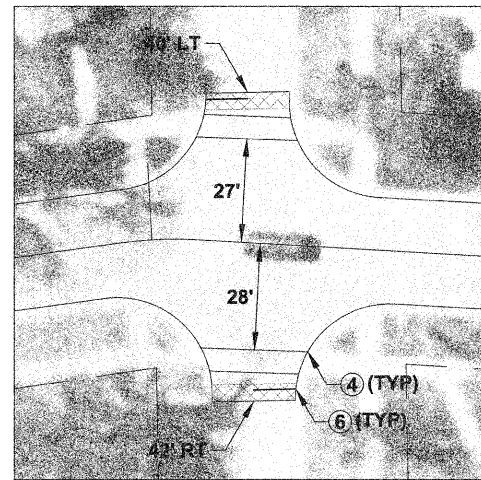
SCALE: 1" = 100'

STA. 10+00 TO STA. 65+05

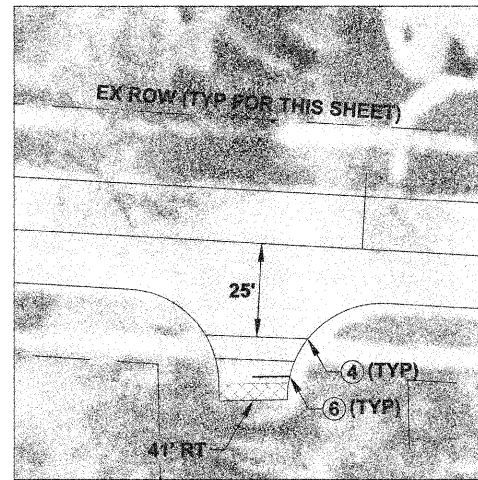
F.A.U. RTE. 2534	SECTION 09-00077-00-RS	COUNTY DUPAGE	TOTAL SHEETS 13	SHEET NO. 6
CONTRACT NO. 63345				
FED. ROAD DIST. NO. 1 ILLINOIS FED. AID PROJECT ARA-9003(406)				



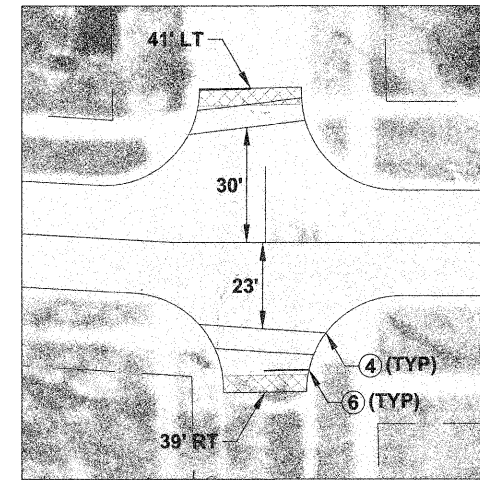
ARBOR AVENUE AT
MCCONNELL AVENUE



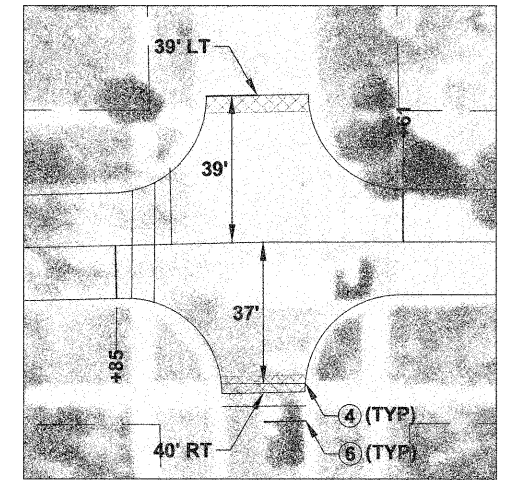
ARBOR AVENUE AT
YORK AVENUE



ARBOR AVENUE AT
TURNER AVENUE



ARBOR AVENUE AT
GRAND LAKE BOULEVARD



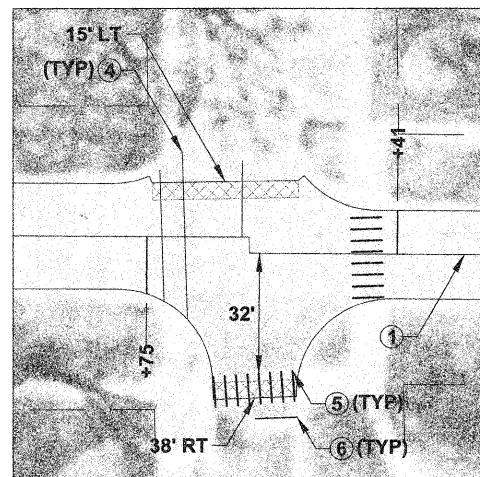
ARBOR AVENUE AT
ELMWOOD AVENUE

PR THERMOPLASTIC PAVEMENT MARKING LEGEND (TYP. FOR THIS SHEET):

- ① CENTERLINE - 2 @ 4", YELLOW, 11" C-C
- ② DOTTED LINE - 1 @ 6", WHITE, 2' DASH, 6' SKIP
- ③ TURN LANE LINE - 1 @ 6", WHITE
- ④ CROSSWALK LINE (PEDESTRIAN) - 2 @ 6", WHITE
- ⑤ CROSSWALK LINE (SCHOOL) - 12" LINES @ 90 DEG., WHITE
- ⑥ STOP LINE - 1 @ 24", WHITE
- ⑦ PAINTED MEDIAN - 2 @ 4" YELLOW WITH 12" DIAGONALS @ 45 DEG., YELLOW, 5 EQUALLY SPACED DIAGONALS VARIOUS, WHITE
- ⑧ LETTERS AND SYMBOLS -

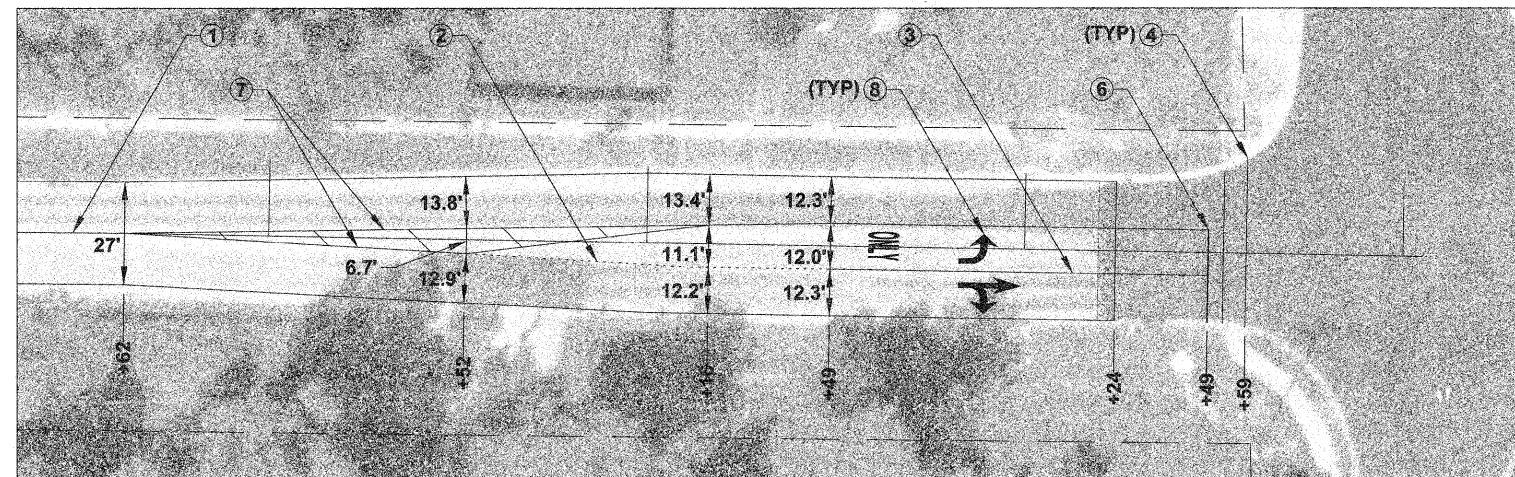
NOTES:

1. THIS SHEET DETAILS PAVEMENT MARKINGS AT THE INTERSECTIONS ONLY. SEE SHEET 6 FOR PAVEMENT MARKINGS BETWEEN NATIONAL STREET AND HAWTHORNE LANE WHERE ARBOR AVENUE IS A RURAL CROSS SECTION.
2. THERE ARE NO PROPOSED INTERSECTION PAVEMENT MARKINGS AT THE INTERSECTIONS OF ARBOR AVENUE AND WASHINGTON STREET AND NOR-OAKS COURT.
3. THE NORTH ARROW SHOWN APPLIES TO THIS ENTIRE SHEET.

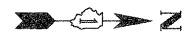


ARBOR AVENUE AT
NATIONAL STREET

(SEE CENTERLINE SHIFT DETAIL ON SHEET 6)



ARBOR AVENUE AT
HAWTHORNE LANE



FILE NAME = 09-07_Plan Sheets_Arbor LAPP
PLOT DATE = 3/11/10

thomas engineering group
238 south kenilworth avenue
suite 100
oak park, il 60302
phone: 708-533-1700

DESIGNED - BLP
DRAWN - BLP
CHECKED - DMM
DATE - 03/12/10

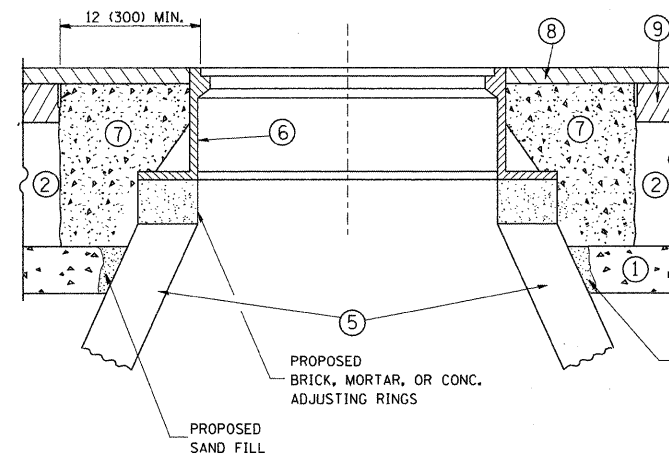
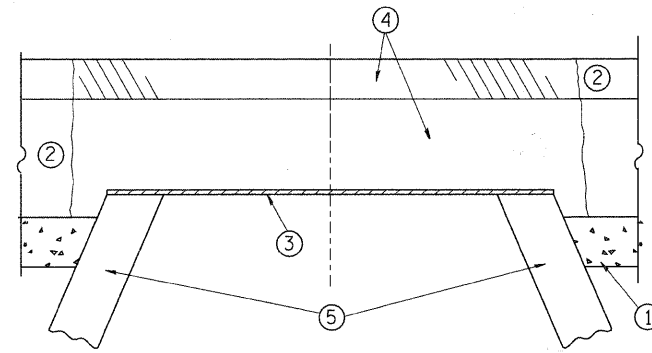
REVISED -
REVISED -
REVISED -
REVISED -

STATE OF ILLINOIS
DEPARTMENT OF TRANSPORTATION

ARBOR AVENUE - WASHINGTON STREET TO HAWTHORNE LANE
INTERSECTION DETAILS

SCALE: N.T.S.

F.A.U. RTE. 2534	SECTION 09-00077-00-RS	COUNTY DUPAGE	TOTAL SHEETS 13	SHEET NO. 7
CONTRACT NO. 63345				
FED. ROAD DIST. NO. 1 ILLINOIS FED. AID PROJECT ARA-9003(406)				



CONSTRUCTION PROCEDURES

STAGE 1 (BEFORE PAVEMENT MILLING)

- A) REMOVE A MINIMUM OF 12 (300) OF THE PAVEMENT FROM AROUND THE STRUCTURE.
- B) REMOVE THE EXISTING FRAME AND LID FROM THE STRUCTURE.
- C) COVER THE STRUCTURE OPENING WITH A 36 (900) DIAMETER METAL PLATE.
- D) BACKFILL WITH CRUSHED STONE AND A MINIMUM 1 1/2 (40) THICK HMA SURFACE MIX APPROVED BY THE ENGINEER.

STAGE 2 (AFTER PAVEMENT MILLING)

- A) REMOVE THE HMA SURFACE MIX AND CRUSHED STONE.
- B) INSTALL THE FRAME AND LID; ADJUST THE FRAME TO ITS FINAL SURFACE ELEVATION.
- C) THE SURROUNDING SPACE SHALL BE FILLED WITH CLASS SI CONCRETE, OR HMA SURFACE COURSE OR HMA BINDER COURSE TO THE ELEVATION OF THE SURFACE OF THE EXISTING BASE COURSE OR THE BINDER COURSE.

THE PROCEDURE EXPLAINED ABOVE SHALL CONFORM TO THE APPLICABLE PORTIONS OF SECTIONS 353, 406, 602, AND 603 OF THE STANDARD SPECIFICATIONS.

LEGEND

- ① SUB-BASE GRANULAR MATERIAL
- ② EXISTING PAVEMENT
- ③ 36 (900) DIAMETER METAL PLATE
- ④ PROPOSED CRUSHED STONE AND HMA SURFACE MIX
- ⑤ EXISTING STRUCTURE
- ⑥ FRAME AND LID (SEE NOTES)
- ⑦ CLASS SI CONCRETE, HMA SURFACE COURSE OR HMA BINDER COURSE
- ⑧ PROPOSED HMA SURFACE COURSE
- ⑨ PROPOSED HMA BINDER COURSE

LOCATION OF STRUCTURES:

THE CONTRACTOR WILL BE REQUIRED TO KEEP A RECORD OF THE LOCATIONS OF THE BURIED STRUCTURES ACCORDING TO THE STATION AND DISTANCE LEFT OR RIGHT OF THE CENTERLINE OF PAVEMENT. UPON COMPLETION OF THE WORK, THE CONTRACTOR WILL DELIVER THE RECORD TO THE ENGINEER.

BASIS OF PAYMENT: THIS WORK WILL BE PAID FOR AT THE CONTRACT UNIT PRICE PER EACH FOR "FRAMES AND LIDS TO BE ADJUSTED, SPECIAL"

NEW FRAMES AND LIDS, WHEN SPECIFIED, WILL BE PAID FOR SEPARATELY.

NOTES:

EXISTING BROKEN FRAMES AND LIDS SHALL BE REMOVED AND DISPOSED OF BY THE CONTRACTOR AND SHALL BE REPLACED AS DIRECTED BY THE ENGINEER. REPLACEMENT FRAMES AND LIDS WILL BE PAID FOR IN ACCORDANCE WITH ARTICLE 109.04 OF THE STANDARD SPECIFICATIONS UNLESS A SEPARATE PAY ITEM HAS BEEN PROVIDED.

IF THE EXISTING LIDS ARE OPEN, THE FRAME WILL BE ADJUSTED TO THE ELEVATION OF THE MILLED PAVEMENT SURFACE PRIOR TO THE MILLING OPERATION. THE FRAME WILL NOT BE REMOVED AND COVERED BY THE METAL PLATE.

CITY OF CHICAGO CASTINGS ARE THE PROPERTY OF THE CITY AND THE CONTRACTOR SHALL NOTIFY THE CITY FOR REMOVAL AND DISPOSITION OF THE CASTINGS.

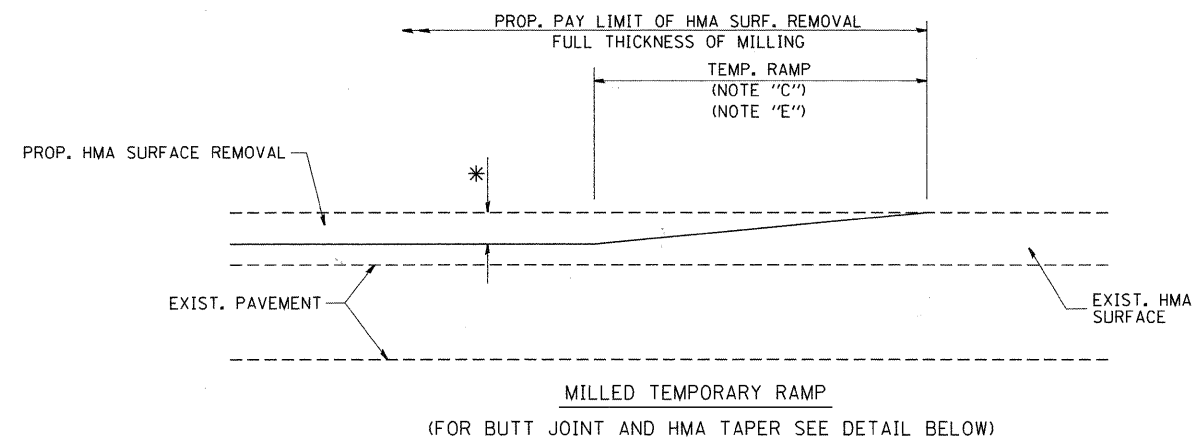
THE METAL PLATE USED TO COVER THE STRUCTURE SHALL REMAIN THE PROPERTY OF THE CONTRACTOR.

WHEN STRUCTURES ARE TO BE ADJUSTED OR RECONSTRUCTED, THE LOWERING AND RAISING OF THE FRAMES AND LIDS WILL NOT BE PAID FOR SEPARATELY BUT WILL BE INCLUDED IN THE COST OF THE CORRESPONDING PAY ITEM.

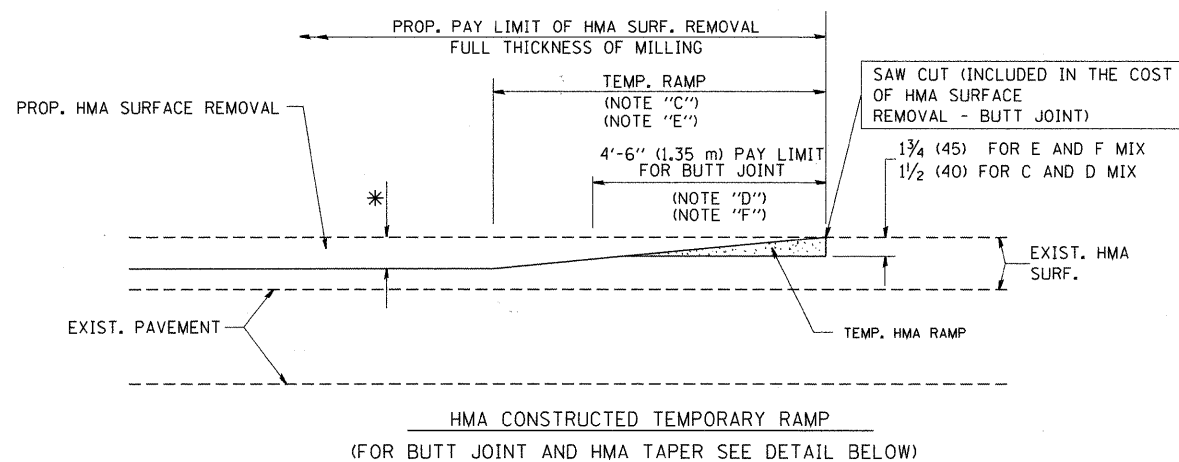
DETAILS FOR FRAMES AND LIDS ADJUSTMENT WITH MILLING

ALL DIMENSIONS ARE IN INCHES (MILLIMETERS) UNLESS OTHERWISE SHOWN

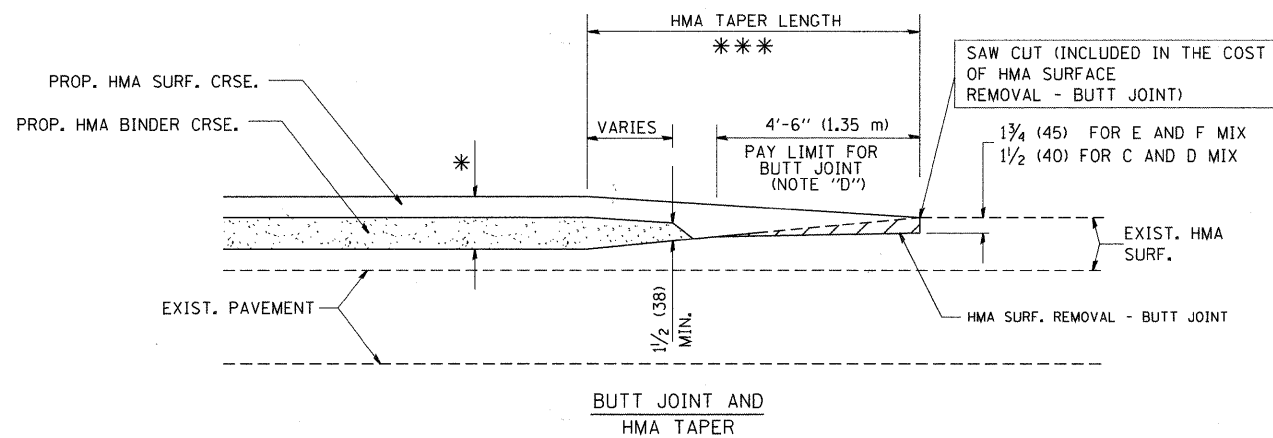
FILE NAME = W:\diststd\22x34\bd08.dgn	USER NAME = gaglienobt	DESIGNED - R. SHAH	REVISED - R. SHAH 03-10-95	STATE OF ILLINOIS DEPARTMENT OF TRANSPORTATION	DETAILS FOR FRAMES AND LIDS ADJUSTMENT WITH MILLING			F.A.U. RTE. 2534	SECTION 09-00077-00-RS	COUNTY DUPAGE	TOTAL SHEETS 13	SHEET NO. 8
	PLOT SCALE = 50.0000' / IN.	CHECKED -	REVISED - R. WIEDEMAN 05-14-04		SCALE: NONE	SHEET NO. 1 OF 1 SHEETS	STA. TO STA.	BD600-03 (BD-8)				
	PLOT DATE = 1/4/2008	DATE - 10-25-94	REVISED - R. BORO 01-01-07		FED. ROAD DIST. NO. 1 [ILLINOIS] FED. AID PROJECT ARA-9003(406)							
CONTRACT NO. 63345												



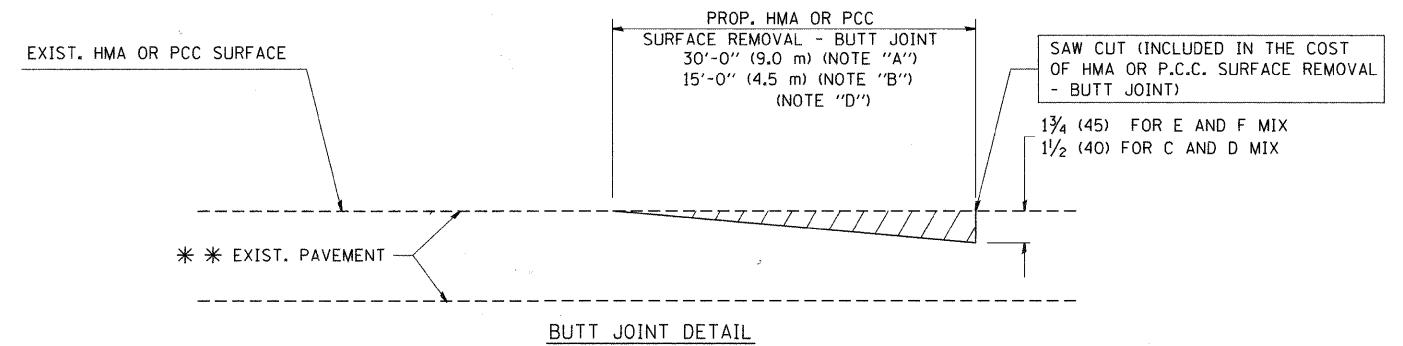
OPTION 1



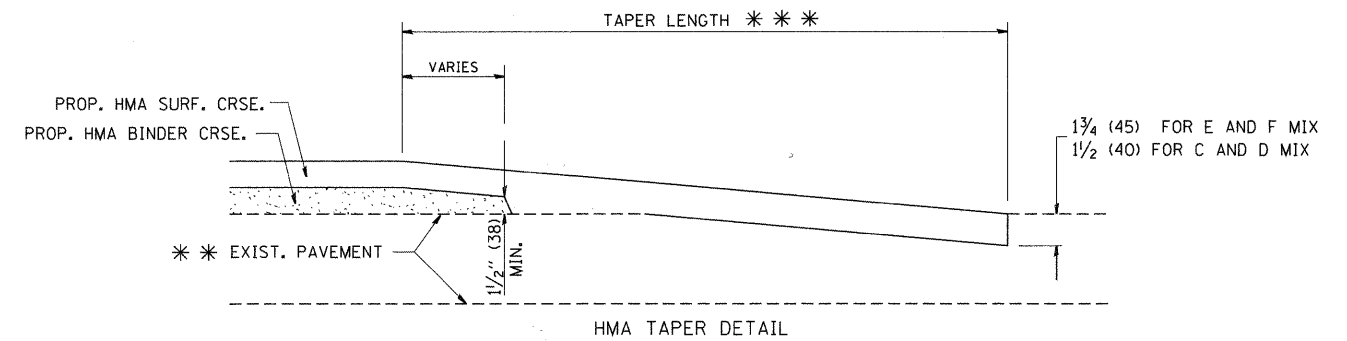
OPTION 2
TYPICAL TEMPORARY RAMP



TYPICAL BUTT JOINT AND HMA TAPER
FOR MILLING AND RESURFACING



BUTT JOINT DETAIL



HMA TAPER DETAIL

TYPICAL BUTT JOINT AND HMA TAPER
FOR RESURFACING ONLY

*** PC CONCRETE, HMA OR HMA RESURFACED PAVEMENT.

NOTES

- A: MAINLINE ROADWAYS AND MAJOR SIDE ROADS.
 - B: MINOR SIDE ROADS.
 - C: THE TEMP. RAMP SHALL BE CONSTRUCTED IMMEDIATELY UPON REMOVAL OF THE EXISTING HMA SURFACE.
 - D: THE BUTT JOINT SHALL BE CONSTRUCTED IMMEDIATELY PRIOR TO PLACING THE PROPOSED HMA COURSES.
 - E: TAPER THE TEMP. RAMP AT A RATE OF 3'-0" (900 mm) PER 1 INCH (25 mm) OF MILLING THICKNESS.
 - F: INSTALLATION AND REMOVAL OF THE 4'-6" (1.35 m) TEMP. RAMP IS INCLUDED IN COST OF HMA SURFACE REMOVAL - BUTT JOINT
 - G: SEE ARTICLE 406.08 AND 406.14 OF THE STANDARD SPECIFICATIONS FOR "HMA AND/OR PCC SURFACE REMOVAL, BUTT JOINT".
- * SEE TYPICAL SECTIONS FOR MILLING THICKNESS.
- *** 20'-0" (6.1 m) PER 1 (25) RESURFACING (NOTE "A")
10'-0" (3.0 m) PER 1 (25) RESURFACING (NOTE "B")

BASIS OF PAYMENT:

THE BUTT JOINT WILL BE PAID FOR AT THE CONTRACT UNIT PRICE PER SQUARE YARD (SQUARE METER) FOR "HOT-MIX ASPHALT SURFACE REMOVAL - BUTT JOINT" OR FOR "PORTLAND CEMENT CONCRETE SURFACE REMOVAL - BUTT JOINT".

ALL DIMENSIONS ARE IN INCHES (MILLIMETERS) UNLESS OTHERWISE SHOWN.

FILE NAME = W:\distatd\22x34\bd32.dgn

USER NAME = geglionobt

DESIGNED - M. DE YONG

REVISED - R. SHAH 10-25-94

STATE OF ILLINOIS
DEPARTMENT OF TRANSPORTATION

BUTT JOINT AND
HMA TAPER DETAILS

F.A.J. RTE.	SECTION	COUNTY	TOTAL SHEETS	SHEET NO.
2534	09-00077-00-RS	DUPAGE	13	9

PLOT SCALE = 50.0000' / IN.

CHECKED -

REVISED - M. GOMEZ 04-06-01

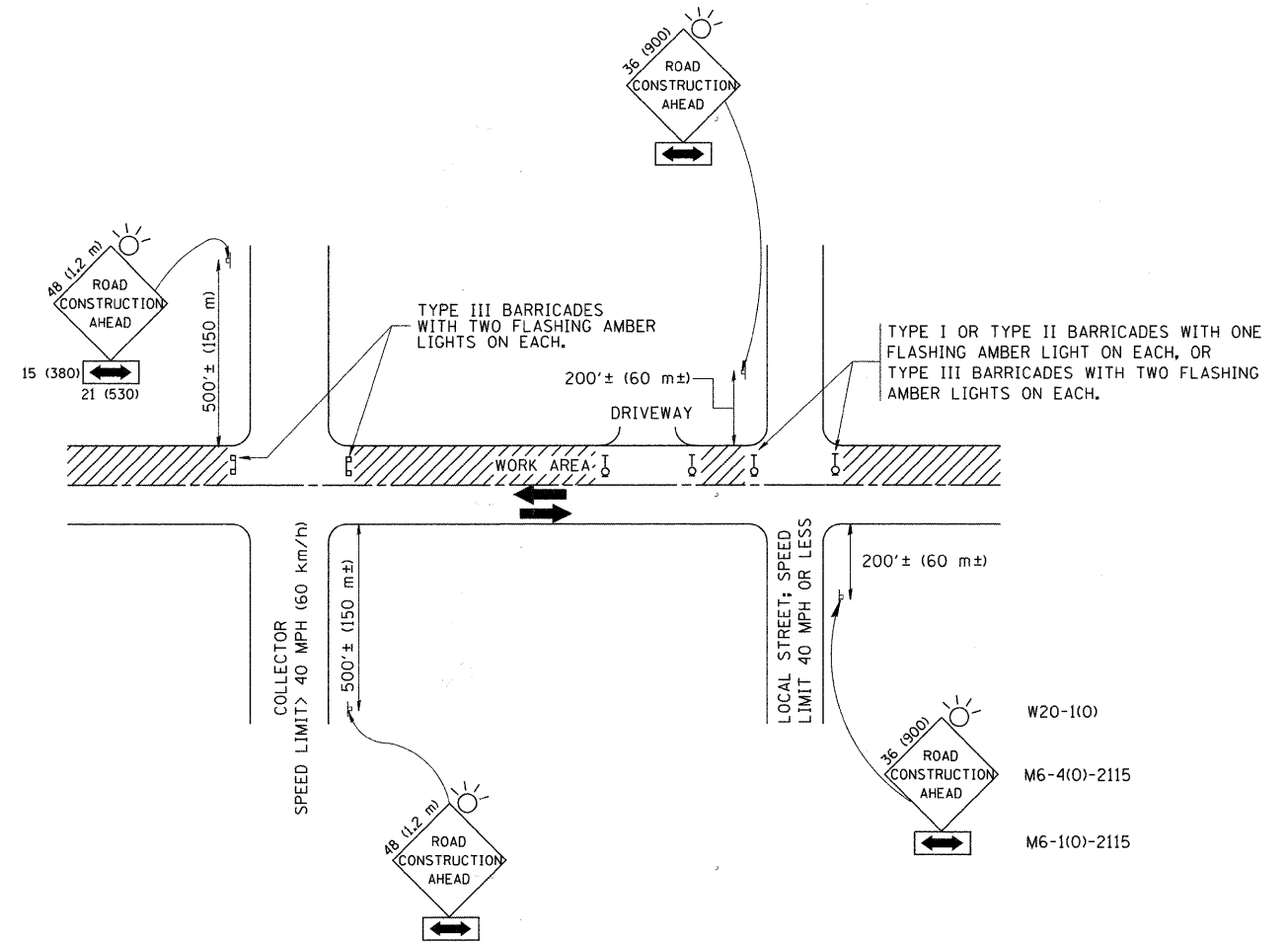
SCALE: NONE SHEET NO. 1 OF 1 SHEETS STA. TO STA.

BD400-05 BD32		CONTRACT NO.	63345
FED. ROAD DIST. NO. 1		ILLINOIS	FED. AID PROJECT ARA-9003(406)

PLOT DATE = 1/4/2008

DATE - 06-13-90

REVISED - R. BORO 01-01-07



TRAFFIC CONTROL AND PROTECTION FOR SIDE ROADS, INTERSECTIONS, AND DRIVEWAYS

NOTES:

A. FOR NO LANE RESTRICTION ON THE SIDE ROAD OR DRIVEWAYS

1. SIDE ROAD WITH A SPEED LIMIT OF 40 MPH (60 km/h) OR LESS AS SHOWN ON THE DRAWING AND AS DIRECTED BY THE ENGINEER:
 - a) ONE ROAD CONSTRUCTION AHEAD SIGN 36 x 36 (900x900) WITH A FLASHER AND FLAG MOUNTED ON IT APPROXIMATELY 200' (60 m) IN ADVANCE OF THE MAIN ROUTE.
 - b) THE CLOSED PORTION OF THE MAIN ROUTE SHALL BE PROTECTED BY BLOCKING WITH TYPE I, TYPE II OR TYPE III BARRICADES, 1/3 OF THE CROSS SECTION OF THE CLOSED PORTION.
2. SIDE ROAD WITH A SPEED LIMIT GREATER THAN 40 MPH (60 km/h) AS SHOWN ON THE DRAWING AND AS DIRECTED BY THE ENGINEER:
 - a) ONE ROAD CONSTRUCTION AHEAD SIGN 48 x 48 (1.2 m x 1.2 m) WITH A FLASHER MOUNTED ON IT APPROXIMATELY 500' (150 m) IN ADVANCE OF THE MAIN ROUTE.
 - b) THE CLOSED PORTION OF THE MAIN ROUTE SHALL BE PROTECTED BY BLOCKING WITH TYPE III BARRICADES, 1/2 OF THE CROSS SECTION OF THE CLOSED PORTION.
3. WHEN THE SIDE ROAD LIES BETWEEN THE BEGINNING OF THE MAINLINE SIGNING AND THE WORK ZONE, A SINGLE HEADED ARROW (M6-1) SHALL BE USED IN LIEU OF THE DOUBLE HEADED ARROW (M6-4).

B. FOR A LANE CLOSURE ON A SIDE ROAD OR DRIVEWAY:

USE APPLICABLE PORTIONS OF THE TYPICAL APPLICATION OF TRAFFIC CONTROL DEVICES (STD. 701501, STD. 701606 OR THE APPROPRIATE STANDARD). THE SPACING OF SIGNS AND BARRICADES SHALL BE ADJUSTED FOR FIELD CONDITIONS AS DIRECTED BY THE ENGINEER. THE DIRECTIONAL ARROW SHALL BE COVERED OR REMOVED WHEN NO LONGER CONSISTENT WITH THE SIDE ROAD LANE CLOSURE.

C. ADVANCE WARNING SIGNS ARE TO BE OMITTED ON DRIVEWAY UNLESS OTHERWISE NOTED.

D. THE TRAFFIC CONTROL AND PROTECTION FOR SIDE ROADS, INTERSECTIONS, AND DRIVEWAYS SHALL BE INCIDENTAL TO THE COST OF SPECIFIED TRAFFIC CONTROL STANDARDS OR ITEMS.

All dimensions are in millimeters (inches) unless otherwise shown.

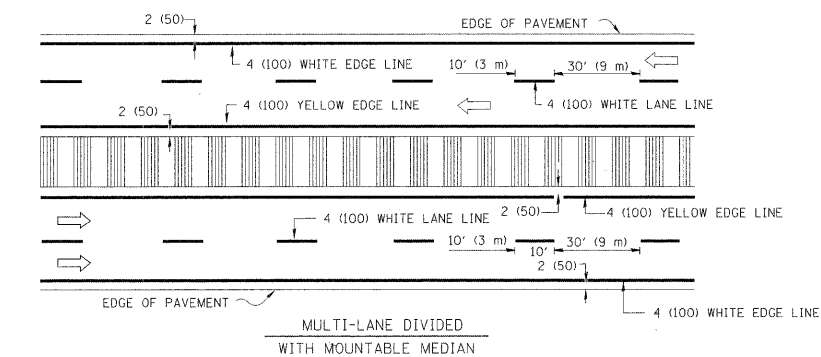
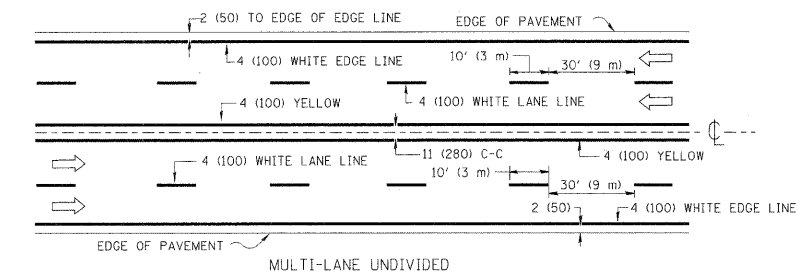
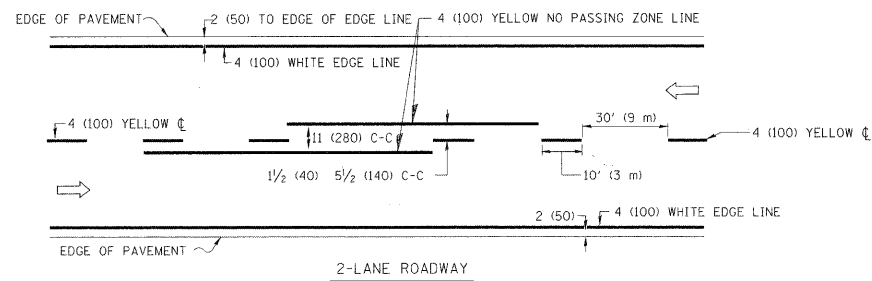
FILE NAME = W:\diststd\22x34\to18.dgn	USER NAME = gaglianobt	DESIGNED - LHA	REVISED - J. OBERLE 10-18-95
		DRAWN -	REVISED - A. HOUSEH 03-06-96
	PLOT SCALE = 50.000 / IN.	CHECKED -	REVISED - A. HOUSEH 10-15-96
	PLOT DATE = 1/4/2008	DATE - 06-89	REVISED - T. RAMMACHER 01-06-00

STATE OF ILLINOIS
DEPARTMENT OF TRANSPORTATION

TRAFFIC CONTROL AND PROTECTION FOR
SIDE ROADS, INTERSECTIONS, AND DRIVEWAYS

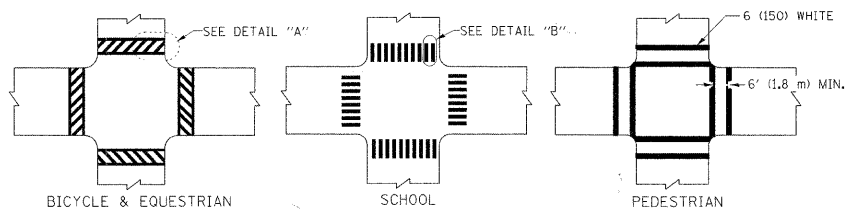
SCALE: NONE SHEET NO. 1 OF 1 SHEETS STA. TO STA.

F.A.U. RTE. 2534	SECTION 09-00077-00-RS	COUNTY DUPAGE	TOTAL SHEETS 13	SHEET NO. 10
TC-10			CONTRACT NO. 63345	
FED. ROAD DIST. NO. 1 ILLINOIS FED. AID PROJECT ARA-9003(406)				

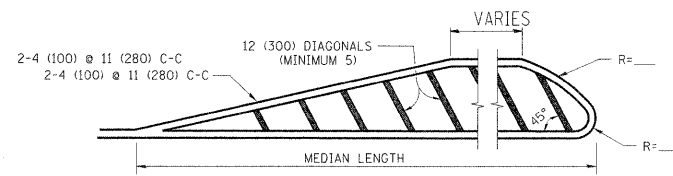
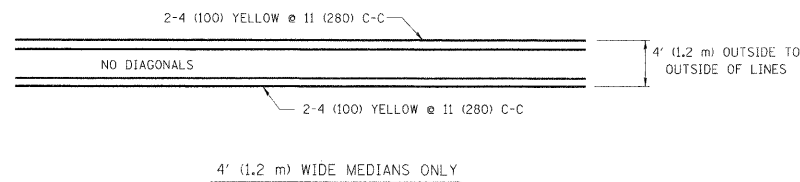


NOTE: MEDIANS WITH BARRIER CURB DO NOT REQUIRE AN EDGE LINE

TYPICAL LANE AND EDGE LINE MARKING

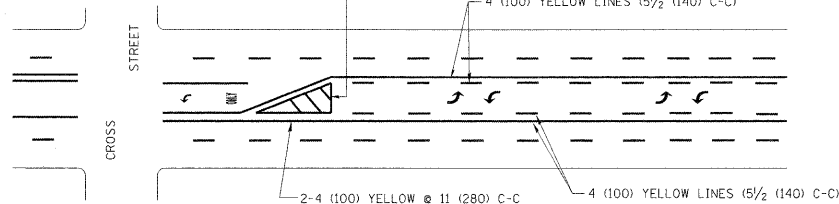


TYPICAL CROSSWALK MARKING



FOR MEDIAN LENGTHS WHERE DIAGONAL SPACING CANNOT BE ATTAINED, USE 5 (FIVE) EQUALLY SPACED DIAGONAL LINES.
 DIAGONAL LINE SPACING: 50' (15 m) C-C (LESS THAN 30MPH (50 km/h))
 75' (25 m) C-C 30MPH (50 km/h) TO 45MPH (70 km/h)
 150' (45 m) C-C (MORE THAN 45MPH (70 km/h))

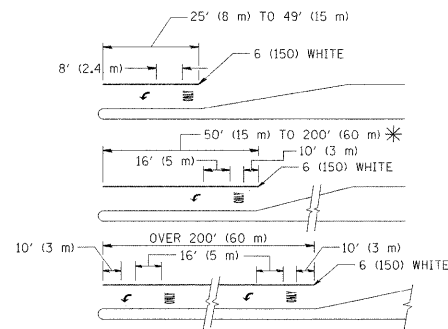
MEDIANS OVER 4' (1.2 m) WIDE



A MINIMUM OF TWO PAIRS OF TURN ARROWS SHALL BE USED, WHITE IN COLOR. ADDITIONAL PAIRS SHALL BE PLACED AT 200' (60 m) TO 300' (90 m) INTERVALS.

MEDIAN WITH TWO-WAY LEFT TURN LANE

TYPICAL PAINTED MEDIAN MARKING

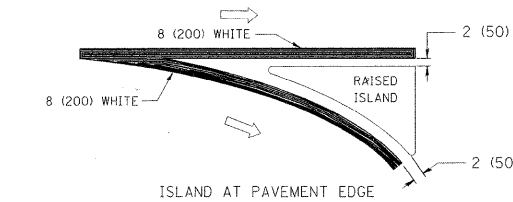
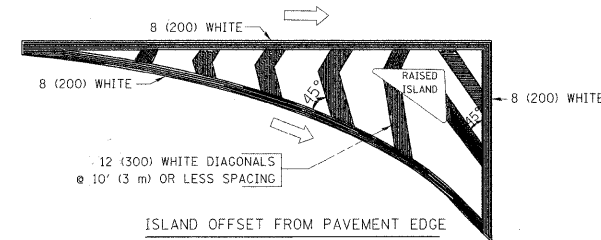


FULL SIZE LETTERS 8' (2.4 m) AND ARROWS SHALL BE USED.
 AREA = 15.6 SQ. FT. (1.5 m²) ONLY AREA = 20.8 SQ. FT. (1.9 m²)

* TURN LANES IN EXCESS OF 400' (120 m) IN LENGTH MAY HAVE AN ADDITIONAL SET OF ARROW - "ONLY" INSTALLED MIDWAY BETWEEN THE OTHER TWO SETS OF ARROW - "ONLY".

TYPICAL LEFT (OR RIGHT) TURN LANE

TYPICAL TURN LANE MARKING



TYPICAL ISLAND MARKING

TYPE OF MARKING	WIDTH OF LINE	PATTERN	COLOR	SPACING / REMARKS
CENTERLINE ON 2 LANE PAVEMENT	4 (100)	SKIP-DASH	YELLOW	10' (3 m) LINE WITH 30' (9 m) SPACE
CENTERLINE ON MULTI-LANE UNDIVIDED PAVEMENT	2 @ 4 (100)	SOLID	YELLOW	11 (280) C-C
NO PASSING ZONE LINES: FOR ONE DIRECTION	4 (100)	SOLID	YELLOW	5 1/2 (140) C-C FROM SKIP-DASH CENTERLINE
NO PASSING ZONE LINES: FOR BOTH DIRECTIONS	2 @ 4 (100)	SOLID	YELLOW	11 (280) C-C OMIT SKIP-DASH CENTERLINE BETWEEN
LANE LINES	4 (100)	SKIP-DASH	WHITE	10' (3 m) LINE WITH 30' (9 m) SPACE
LANE LINES (EXTENSIONS OF CENTER, LANE OR TURN LANE MARKINGS)	5 (125) ON FREEWAYS	SKIP-DASH	WHITE	
DOTTED LINES (EXTENSIONS OF CENTER, LANE OR TURN LANE MARKINGS)	SAME AS LINE BEING EXTENDED	SKIP-DASH	SAME AS LINE BEING EXTENDED	2' (600) LINE WITH 6' (1.8 m) SPACE
EDGE LINES	4 (100)	SOLID	YELLOW-LEFT WHITE-RIGHT	OUTLINE MOUNTABLE MEDIANS IN YELLOW; EDGE LINES ARE NOT USED NEXT TO BARRIER CURB
TURN LANE MARKINGS	6 (150) LINE; FULL SIZE LETTERS & SYMBOLS (8' (2.4m))	SOLID	WHITE	SEE TYPICAL TURN LANE MARKING DETAIL
TWO WAY LEFT TURN MARKING	2 @ 4 (100) EACH DIRECTION	SKIP-DASH AND SOLID	YELLOW	10' (3 m) LINE WITH 30' (9 m) SPACE FOR SKIP-DASH; 5 1/2 (140) C-C BETWEEN SOLID LINE AND SKIP-DASH LINE
TWO WAY LEFT TURN MARKING	8' (2.4m) LEFT ARROW	IN PAIRS	WHITE	SEE TYPICAL TWO-WAY LEFT TURN MARKING DETAIL
CROSSWALK LINES (PEDESTRIAN)	2 @ 6 (150)	SOLID	WHITE	NOT LESS THAN 6' (1.8 m) APART
CROSSWALK LINES (BIKE & EQUESTRIAN)	12 (300) @ 45°	SOLID	WHITE	2' (600) APART
CROSSWALK LINES (LONGITUDINAL BARS (SCHOOL))	12 (300) @ 90°	SOLID	WHITE	2' (600) APART SEE TYPICAL CROSSWALK MARKING DETAILS.
STOP LINES	24 (600)	SOLID	WHITE	PLACE 4' (1.2 m) IN ADVANCE OF AND PARALLEL TO CROSSWALK, IF PRESENT. OTHERWISE, PLACE AT DESIRED STOPPING POINT. PARALLEL TO CROSSROAD CENTERLINE, WHERE POSSIBLE
PAINTED MEDIANS	2 @ 4 (100) WITH 12 (300) DIAGONALS @ 45°	SOLID	YELLOW: TWO WAY TRAFFIC WHITE: ONE WAY TRAFFIC	11 (280) C-C FOR THE DOUBLE LINE SEE TYPICAL PAINTED MEDIAN MARKING.
NO DIAGONALS USED FOR 4' (1.2 m) WIDE MEDIANS				
GORE MARKING AND CHANNELIZING LINES	8 (200) WITH 12 (300) DIAGONALS @ 45°	SOLID	WHITE	DIAGONALS: 15' (4.5 m) C-C (LESS THAN 30MPH (50 km/h)) 20' (6 m) C-C 30MPH (50 km/h) TO 45MPH (70 km/h) 30' (9 m) C-C (OVER 45MPH (70 km/h))
RAILROAD CROSSING	24 (600) TRANSVERSE LINES; "RR" IS 6' (1.8 m) LETTERS: 16 (400) LINE FOR "X"	SOLID	WHITE	SEE STATE STANDARD 780001 AREA OF: "R"=3.6 SQ. FT. (0.33 m ²) EACH "X"=54.0 SQ. FT. (5.0 m ²)
SHOULDER DIAGONALS	12 (300) @ 45°	SOLID	WHITE - RIGHT YELLOW - LEFT	50' (15 m) C-C (LESS THAN 30MPH (50 km/h)) 75' (25 m) C-C (30 MPH (50 km/h) TO 45MPH (70 km/h)) 150' (45 m) C-C (OVER 45MPH (70 km/h))

FOR FURTHER DETAILS ON PAVEMENT MARKING REFER TO STANDARD SPECIFICATIONS FOR ROAD AND BRIDGE CONSTRUCTION AND STATE STANDARD 780001.

All dimensions are in inches (millimeters) unless otherwise shown.

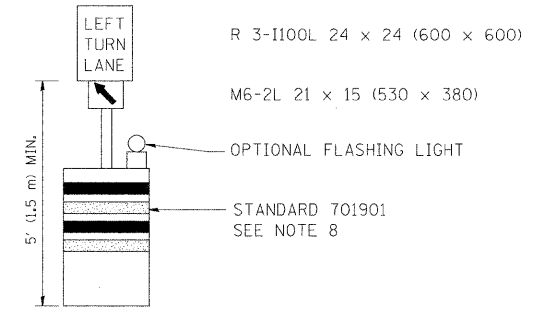
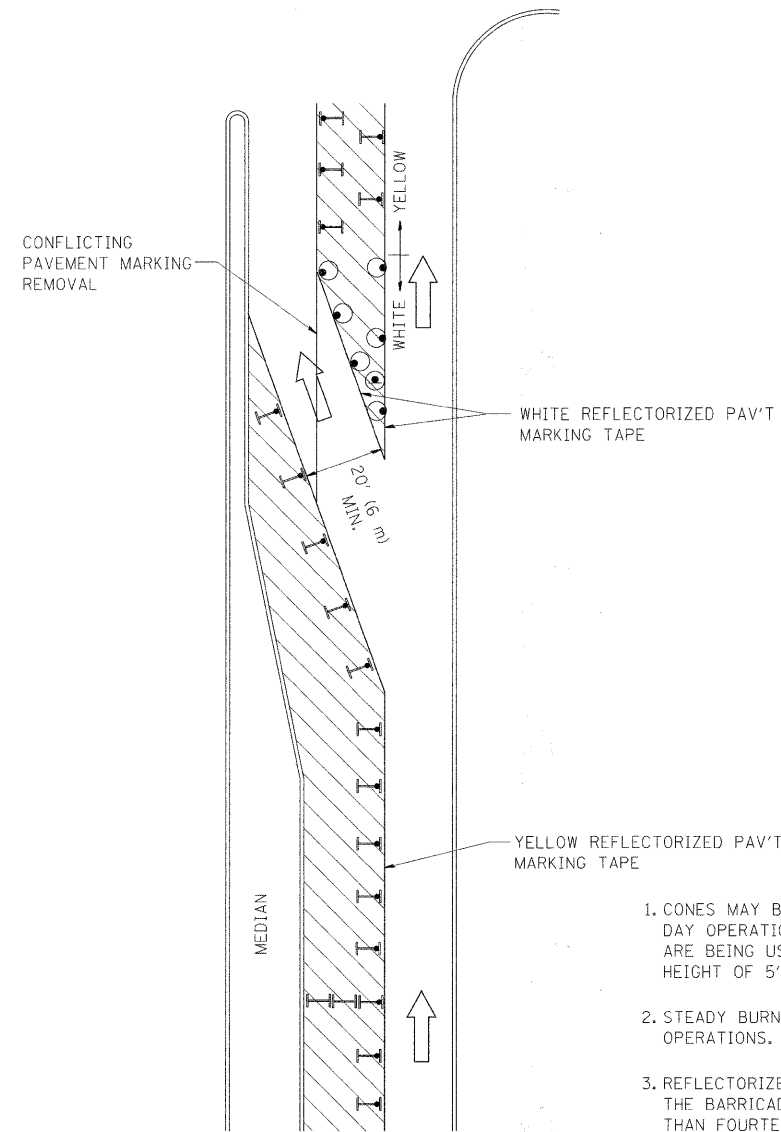
FILE NAME =	USER NAME = drivakosgn	DESIGNED = EVERS	REVISED - T. RAMMACHER 10-27-94
ci:\pwork\pvidot\drivakosgn\d0188315\td3.dgn		DRAWN =	REVISED - C. JUCIUS 09-09-09
PLOT SCALE = 50.000 / / IN.		CHECKED =	REVISED =
PLOT DATE = 9/9/2009		DATE = 03-19-90	REVISED =

STATE OF ILLINOIS
DEPARTMENT OF TRANSPORTATION

DISTRICT ONE
TYPICAL PAVEMENT MARKINGS

SCALE: NONE SHEET NO. 1 OF 1 SHEETS STA. TO STA.

F.A.U. R.T.E.	SECTION	COUNTY	TOTAL SHEETS	SHEET NO.
2534	09-00077-00-RS	DUPAGE	13	11
TC-13		CONTRACT NO. 63345		
FED. ROAD DIST. NO. 1 ILLINOIS		FED. AID PROJECT ARA-9003(406)		

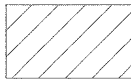
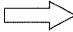






GENERAL NOTES

1. CONES MAY BE SUBSTITUTED FOR BARRICADES OR DRUMS AT HALF THE SPACING DURING DAY OPERATIONS. CONES SHALL BE A MINIMUM OF 28 (710) IN HEIGHT. WHEN CONES ARE BEING USED, THE "LEFT TURN LANE" SIGN MAY BE SKID MOUNTED AT A MINIMUM HEIGHT OF 5' (1.5 m).
2. STEADY BURNING LIGHTS WILL NOT BE REQUIRED ON BARRICADES OR DRUMS FOR DAY OPERATIONS. ALL LIGHTS SHALL BE MONODIRECTIONAL.
3. REFLECTORIZED TEMPORARY PAVEMENT MARKING TAPE SHALL BE PLACED THROUGHOUT THE BARRICADED AREA OF EACH TURN BAY WHERE THE CLOSURE TIME IS GREATER THAN FOURTEEN DAYS.
4. THIS APPLICATION ALSO APPLIES WHEN WORK IS BEING PERFORMED IN THE RIGHT LANE(S) AND THE RIGHT TURN BAY IS TO REMAIN OPEN. UNDER THIS CONDITION, "RIGHT TURN LANE" R3-100 24 x 24 (600 x 600) AND M6-2R 21 x 15 (530 x 380) SHALL BE USED.
5. THESE CONTROLS SHALL SUPPLEMENT MAINLINE TRAFFIC CONTROL FOR LANE CLOSURES.
6. LONGITUDINAL DIMENSIONS MAY BE ADJUSTED TO FIT FIELD CONDITIONS.
7. FORM OPER 725 IS REQUIRED.
8. IF A DRUM OR TYPE II BARRICADE WITH AN ATTACHED SIGN PANEL WHICH MEETS NCHRP 350 REQUIREMENTS IS NOT AVAILABLE, THE SIGNS SHALL BE MOUNTED, ABOVE THE BARRICADES, ON SEPARATE SIGNS SUPPORTS THAT MEET NCHR 350 PREQUIREMENTS.
9. TRAFFIC CONTROL AND PROTECTION AT TURN BAYS (TO REMAIN OPEN TO TRAFFIC) SHALL BE INCLUDED IN THE COST SPECIFIED TRAFFIC CONTROL STANDARDS OR ITEMS.

All dimensions are in inches (millimeters) unless otherwise shown.

LEGEND

-  WORK AREA
-  LANE OPEN TO TRAFFIC
-  TYPE I OR II BARRICADE WITH STEADY BURN LIGHT
-  DRUM WITH STEADY BURN LIGHT
-  DRUM WITH SIGN (WITH OPTIONAL FLASHING LIGHT) SEE DETAIL
-  TYPE I OR II CHECK BARRICADE WITH FLASHING LIGHT

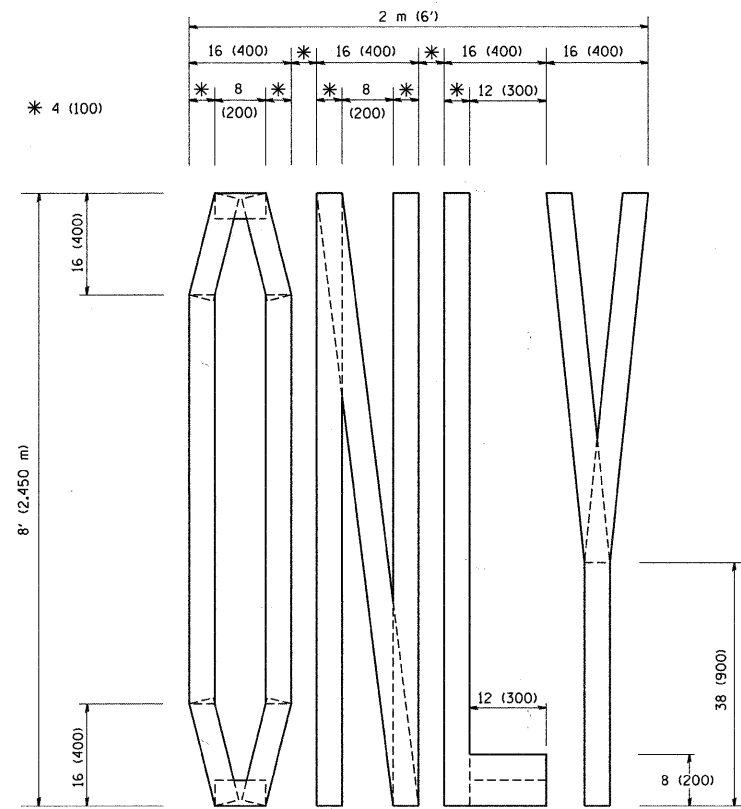
FILE NAME =	USER NAME = drivakosgn	REVISED - T. RAMMACHER 09-08-94	REVISED - R. BORO 09-14-09
ct:\pw_work\VPWIDOT\DRIVAKOSGN\d0108315\14.dgn		REVISED - A. HOUSEH 11-07-95	REVISED -
	PLOT SCALE = 49.9999 1/ IN.	REVISED - A. HOUSEH 10-12-96	REVISED -
	PLOT DATE = 9/14/2009	REVISED - T. RAMMACHER 01-06-00	REVISED -

**STATE OF ILLINOIS
DEPARTMENT OF TRANSPORTATION**

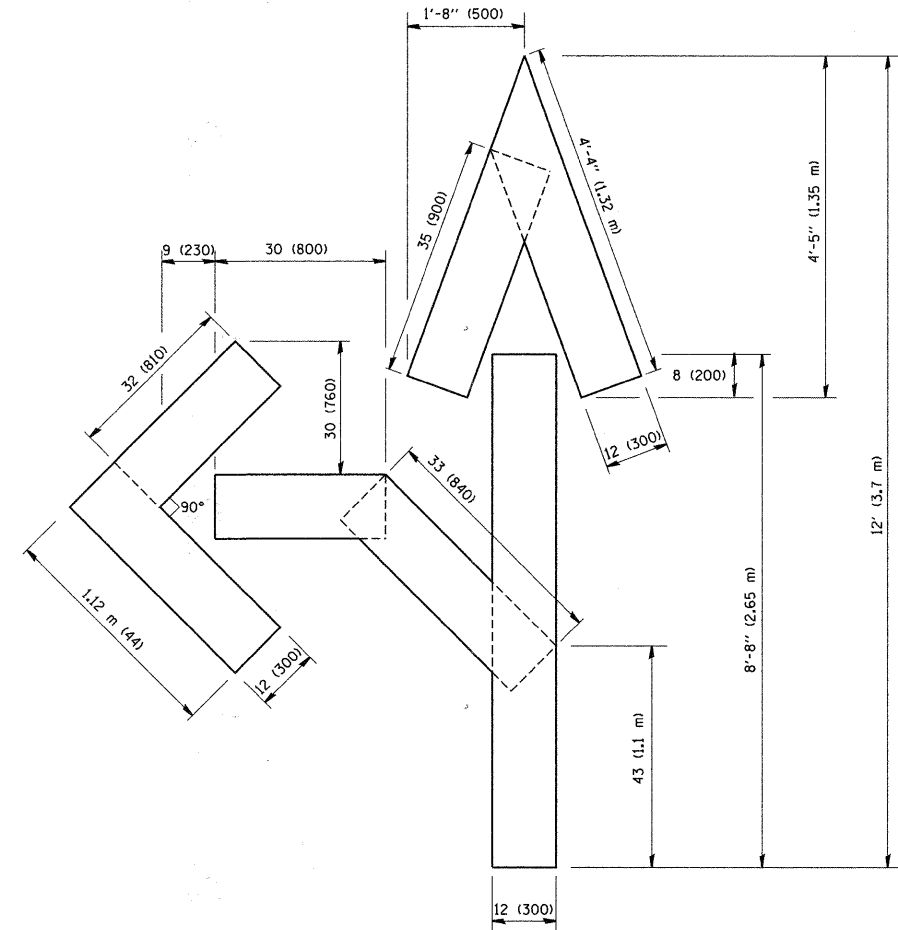
**TRAFFIC CONTROL AND PROTECTION AT TURN BAYS
(TO REMAIN OPEN TO TRAFFIC)**

SCALE: NONE SHEET NO. 1 OF 1 SHEETS STA. TO STA.

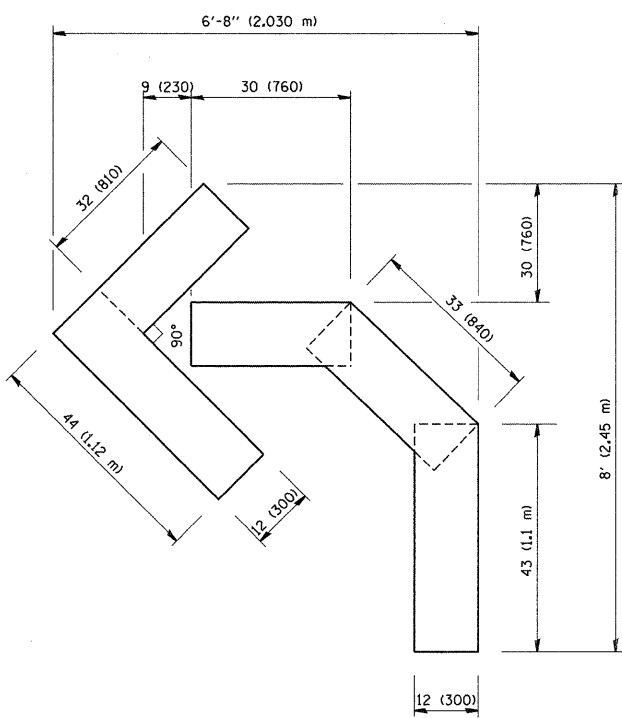
F.A.U. RTE.	SECTION	COUNTY	TOTAL SHEETS	SHEET NO.
2534	09-00077-00-RS	DUPAGE	13	12
TC-14			CONTRACT NO. 63345	
FED. ROAD DIST. NO. 1 ILLINOIS FED. AID PROJECT ARA-9003(406)				



QUANTITY
 4 (100) LINE = 64.1 ft. (19.7 m)
 21.1 sq. ft. (1.97 sq. m)



QUANTITY
 4 (100) LINE = 82.5 ft. (25.3 m)
 27.5 sq. ft. (2.53 sq. m)



QUANTITY
 4 (100) LINE = 45.5 ft. (13.9 m)
 15.2 sq. ft. (1.39 sq. m)

All dimensions are in inches (millimeters) unless otherwise shown.

FILE NAME =
 W:\diststd\22x34\tcl6.dgn

USER NAME = gaglianobt
 PLOT SCALE = 50,0000 "/ IN.
 PLOT DATE = 1/4/2008

DESIGNED -
 DRAWN -
 CHECKED -
 DATE - 09-18-94

REVISED -T. RAMMACHER 06-05-96
 REVISED -T. RAMMACHER 11-04-97
 REVISED -T. RAMMACHER 03-02-98
 REVISED -E. GOMEZ 08-28-00

**STATE OF ILLINOIS
 DEPARTMENT OF TRANSPORTATION**

**PAVEMENT MARKING LETTERS AND SYMBOLS
 FOR TRAFFIC STAGING**

SCALE: NONE SHEET NO. 1 OF 1 SHEETS STA. TO STA.

F.A.U. RTE. 2534	SECTION 09-00077-00-RS	COUNTY DUPAGE	TOTAL SHEETS 13	SHEET NO. 13
TC-16			CONTRACT NO. 63345	
FED. ROAD DIST. NO. 1 ILLINOIS FED. AID PROJECT ARA-9003(406)				