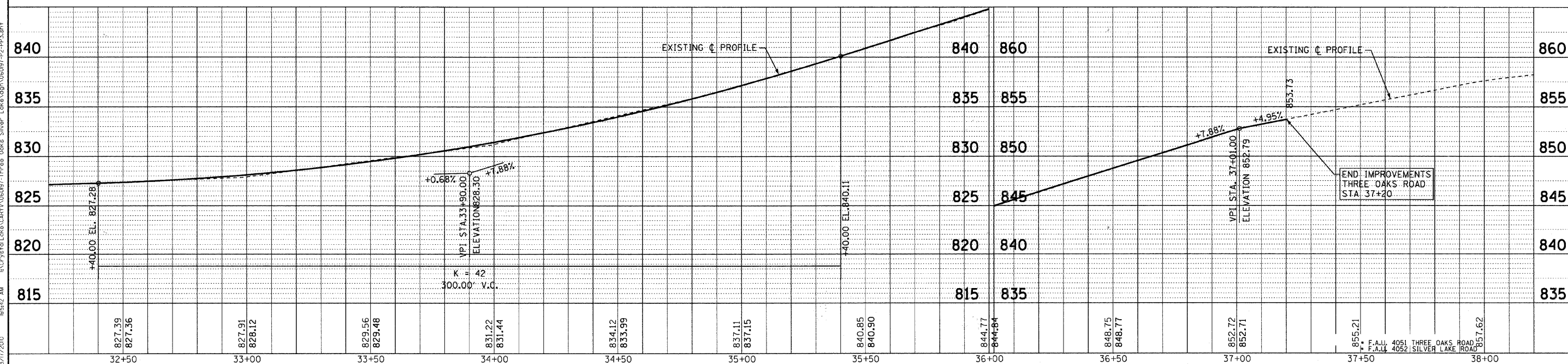


HOT-MIX ASPHALT SURFACE REMOVAL, 2 1/4"  
 POLYMERIZED LEVELING BINDER (MACHINE METHOD), IL 4.75, N50 - 1"  
 HOT-MIX ASPHALT SURFACE COURSE, MIX "D", N70 - 1 1/2"

### THREE OAKS ROAD



827.39 827.36	827.91 828.12	829.56 829.48	831.22 831.44	834.12 833.99	837.11 837.15	840.85 840.50	844.77 844.84	848.75 848.77	852.72 852.71	855.21	857.62
32+50	33+00	33+50	34+00	34+50	35+00	35+50	36+00	36+50	37+00	37+50	38+00



DESIGNED - MWP/DSH  
 DRAWN - MAC  
 CHECKED - RWL  
 DATE - 03-01-10

REVISED - 01-04-10 PER IDOT  
 REVISED - 03-01-10 PER IDOT  
 REVISED - 03-17-10 PER IDOT  
 FILE-060197-P2-PP3.shx

VILLAGE OF CARY, ILLINOIS  
 THREE OAKS ROAD AND SILVER LAKE ROAD  
 ARRA INTERSECTION IMPROVEMENTS

PLAN & PROFILE  
 THREE OAKS ROAD

SCALE: H: 1"=20' V: 1"=5'

STA. 32+50 TO STA. 38+00

F.A.U. RTE.	SECTION	COUNTY	TOTAL SHEETS	SHEET NO.
	09-00058-00-CH	MCHENRY	53	13
C-91-511-10		CONTRACT NO. 63381		
FED. ROAD DIST. NO. 1 ILLINOIS		FED. AID PROJECT: ARA-900316351		

COPYRIGHT © 2010 BY BAXTER & WOODMAN, INC.  
 ALL RIGHTS RESERVED.  
 PROJECT: ARRA INTERSECTION IMPROVEMENTS  
 SHEET: 13 OF 53  
 DATE: 03/01/10  
 FILE: 060197-P2-PP3.shx