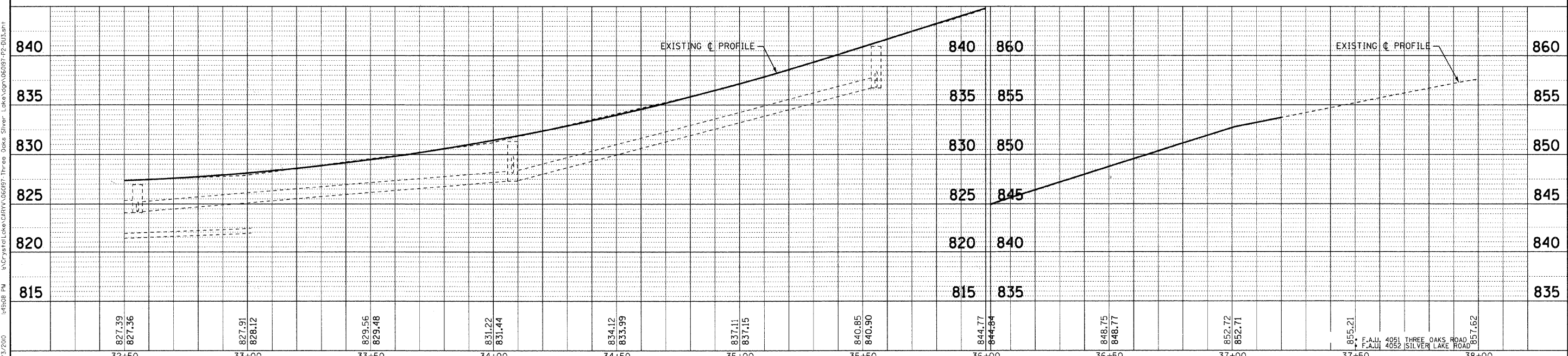


THREE OAKS ROAD

STORM PIPES					
NO.	TYPE	DIA	LENGTH	SLOPE	TBF (CY)
P-6	RCP, CL A, TY-1	12"	11'	1.0%	2.0
P-7	RCP, CL A, TY-1	12"	5'	1.0%	0.8
P-8	RCP, CL A, TY-1	12"	4'	1.0%	0.5

STORM STRUCTURES						
NO.	STATION	OFFSET	TYPE	FRAME TYPE	RIM/EP EL	INVERT
ST-7	32+56	30.4' LT	INLET TY-A	TY 11V F&G	826.59 EP	824.33 12" S
ST-8	34+09	23.4' LT	INLET TY-A	TY 11V F&G	831.31 EP	828.27 12" S
ST-9	35+56	17.9' LT	CATCH BASIN, TY C	TY 11V F&G	840.89 EP	838.66 12" S



COPYRIGHT © 2010 BY BAXTER & WOODMAN, INC.
 STATE OF ILLINOIS - PROFESSIONAL DESIGN FIRM
 2636mcg 3/3/2010 1:49:08 PM
 ...:\projects\new\p22x24\p1\...
 \C:\system\lakes\cary\p22x24\p1\...

	DESIGNED - MWP/DSH	REVISED - 01-04-10 PER IDOT	VILLAGE OF CARY, ILLINOIS THREE OAKS ROAD AND SILVER LAKE ROAD ARRA INTERSECTION IMPROVEMENTS	DRAINAGE AND UTILITIES THREE OAKS ROAD	F.A.U. SECTION	COUNTY	TOTAL SHEETS	SHEET NO.
	DRAWN - MAC	REVISED - 03-01-10 PER IDOT			09-00058-00-CH	MCHENRY	53	21
	CHECKED - RWL	REVISED -			C-91-511-10		CONTRACT NO. 63381	
	DATE - 03-01-10	FILE-060197-P2-DU3.shf			FED. ROAD DIST. NO. 1 ILLINOIS		FED. AID PROJECT: ARA-90031635	

SCALE: H: 1"=20' V: 1"=5' STA. 32+50 TO STA. 38+00