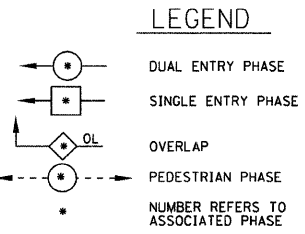
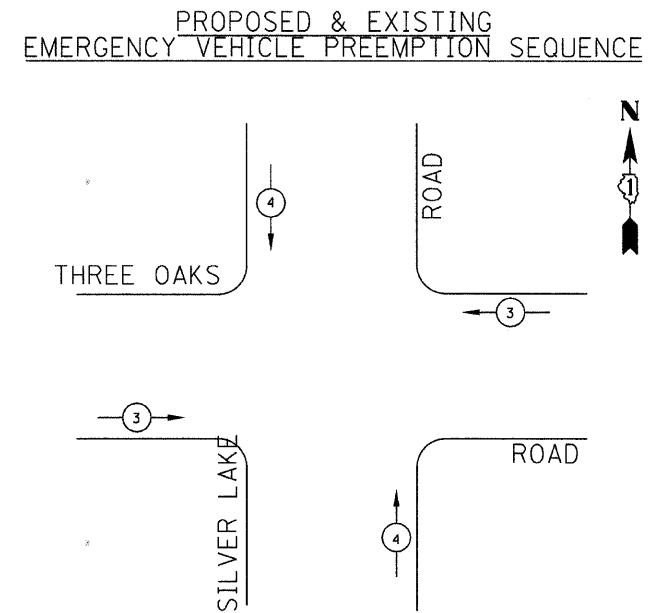
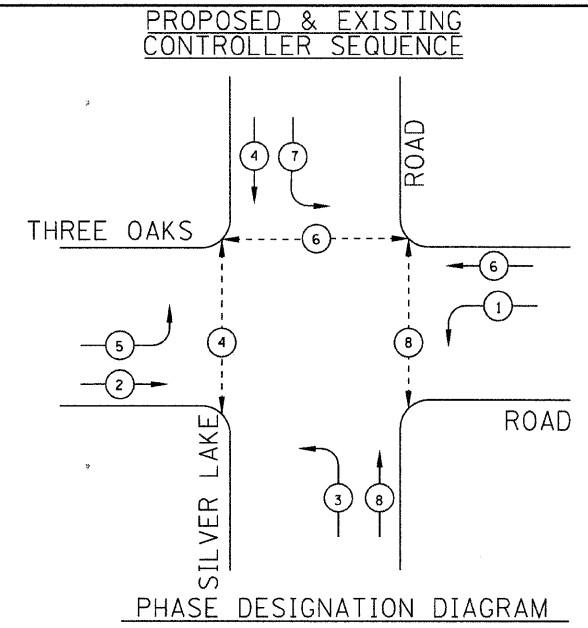
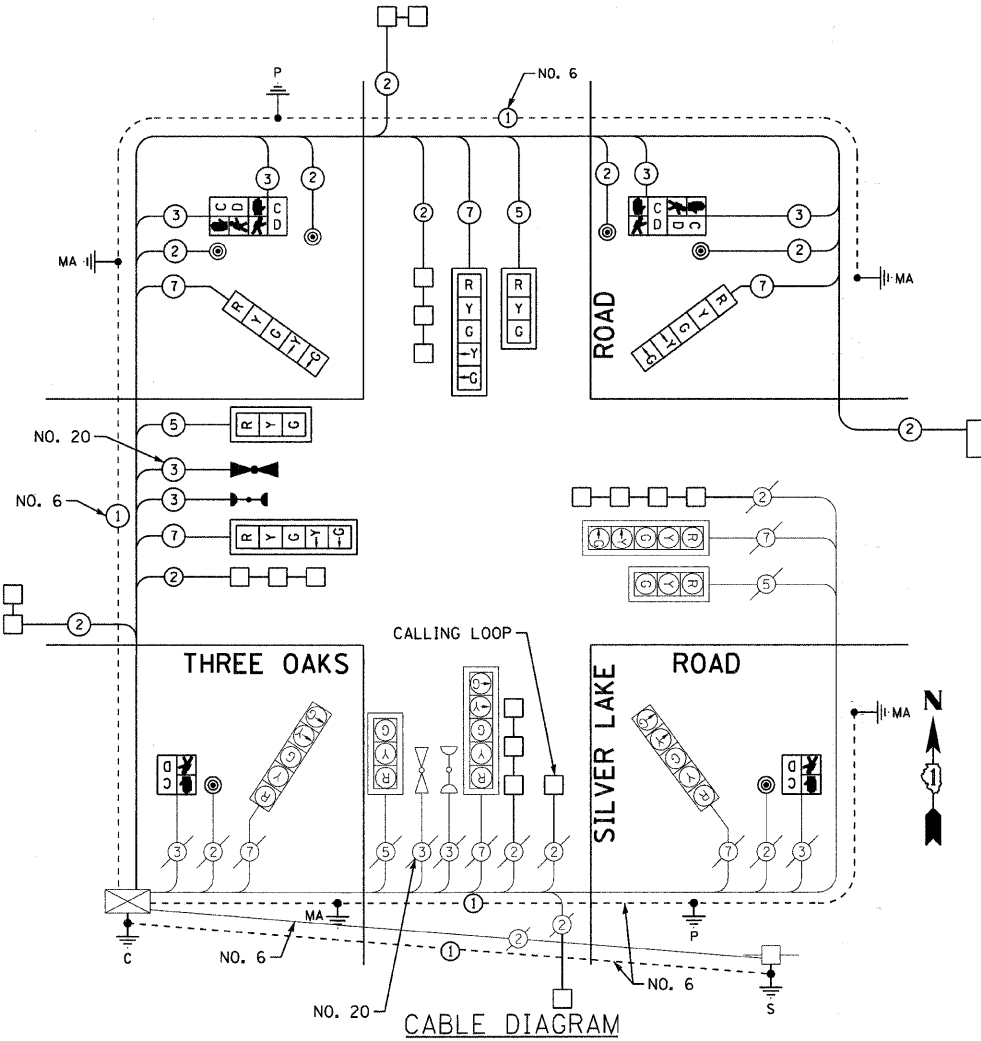


SCHEDULE OF QUANTITIES

PAY ITEM	UNIT	QUANTITY
CONDUIT IN TRENCH, 2" DIA., GALVANIZED STEEL	FOOT	477
CONDUIT IN TRENCH, 2 1/2" DIA., GALVANIZED STEEL	FOOT	5
CONDUIT IN TRENCH, 3" DIA., GALVANIZED STEEL	FOOT	18
CONDUIT IN TRENCH, 4" DIA., GALVANIZED STEEL	FOOT	48
CONDUIT PUSHED, 4" DIA., GALVANIZED STEEL	FOOT	132
HANDHOLE	EACH	5
TRENCH AND BACKFILL FOR ELECTRICAL WORK	FOOT	500
PAINT EXISTING TRAFFIC SIGNAL EQUIPMENT	EACH	1
ELECTRIC CABLE IN CONDUIT, SIGNAL NO. 14 2C	FOOT	865
ELECTRIC CABLE IN CONDUIT, SIGNAL NO. 14 3C	FOOT	1,077
ELECTRIC CABLE IN CONDUIT, SIGNAL NO. 14 5C	FOOT	523
ELECTRIC CABLE IN CONDUIT, SIGNAL NO. 14 7C	FOOT	1,043
ELECTRIC CABLE IN CONDUIT, LEAD-IN, NO. 14 1 PAIR	FOOT	1,225
TRAFFIC SIGNAL POST, GALVANIZED STEEL 16 FT.	EACH	1
STEEL MAST ARM ASSEMBLY AND POLE, 40 FT.	EACH	1
STEEL MAST ARM ASSEMBLY AND POLE, 50 FT.	EACH	1
CONCRETE FOUNDATION, TYPE A	FOOT	4
CONCRETE FOUNDATION, TYPE E 36" DIAMETER	FOOT	28
DRILL EXISTING HANDHOLE	EACH	5
SIGNAL HEAD, 1-FACE, 3-SECTION, MAST ARM MOUNTED	EACH	2
SIGNAL HEAD, 1-FACE, 5-SECTION, BRACKET MOUNTED	EACH	2
SIGNAL HEAD, 1-FACE, 5-SECTION, MAST ARM MOUNTED	EACH	2
PEDESTRIAN SIGNAL HEAD, LED, 1-FACE, BRACKET MOUNTED WITH COUNTDOWN TIMER	EACH	2
PEDESTRIAN SIGNAL HEAD, LED, 2-FACE, BRACKET MOUNTED WITH COUNTDOWN TIMER	EACH	2
TRAFFIC SIGNAL BACKPLATE, LOUVERED, ALUMINUM	EACH	4
DETECTOR LOOP, TYPE 1	FOOT	719
LIGHT DETECTOR	EACH	1
PEDESTRIAN PUSH-BUTTON	EACH	6
TEMPORARY TRAFFIC SIGNAL INSTALLATION	EACH	1
MODIFY EXISTING CONTROLLER	EACH	1
REMOVE ELECTRIC CABLE FROM CONDUIT	FOOT	4,539
REMOVE EXISTING TRAFFIC SIGNAL EQUIPMENT	EACH	1
REMOVE EXISTING HANDHOLE	EACH	5
REMOVE EXISTING CONCRETE FOUNDATION	EACH	3
PAINT NEW TRAFFIC SIGNAL POST	EACH	1
PAINT NEW MAST ARM POLE, 40 FEET AND OVER	EACH	2
TEMPORARY TRAFFIC SIGNAL TIMING	EACH	1
GROUNDING EXISTING HANDHOLE FRAME AND COVER	EACH	10
ELECTRIC CABLE IN CONDUIT, GROUNDING, NO. 6 1C	FOOT	1,800
ELECTRIC CABLE IN CONDUIT NO. 20 3/C, TWISTED SHIELDED	FOOT	184



- NOTES:
1. THE PRIORITY CONTROL SYSTEM EQUIPMENT SHALL MATCH THE EXISTING EQUIPMENT TYPE.
 2. THE EXISTING CONTROLLER WILL NEED TO BE MODIFIED TO ACCOMMODATE TWO ADDITIONAL PROPOSED PEDESTRIAN PUSH BUTTONS AND SHALL BE PAID FOR AS MODIFY EXISTING CONTROLLER.
 3. EXISTING MAST ARM MOUNTED STREET NAME SIGNS SHALL BE SALVAGED AND REINSTALLED WITH NEW MOUNTING HARDWARE ON THE PROPOSED MAST ARMS, INCLUDED IN EACH STEEL MAST ARM ASSEMBLY AND POLE.

PROPOSED EMERGENCY VEHICLE PREEMPTION		
EMERGENCY VEHICLE PREEMPTION	3	4
MOVEMENT	← →	↑ ↓

- F.A.U. 4051 THREE OAKS ROAD
- F.A.U. 4052 SILVER LAKE ROAD

I.D.O.T TRAFFIC SIGNAL INSTALLATION ELECTRICAL SERVICE REQUIREMENTS					TOTAL WATTAGE
TYPE	NO. LAMPS	WATTAGE INCAND.	WATTAGE LED	%OPERATION	
SIGNAL (RED)	12	135		0.50	810
(YELLOW)	12	135		0.25	405
(GREEN)	12	135		0.25	405
ARROW	16	135		0.10	216
PED. SIGNAL	6		25	1.00	150
CONTROLLER	1	100		1.00	100.00
ILLUM. SIGN	--			0.05	--
FLASHER				0.50	--
ENERGY COSTS TO:				TOTAL =	2086

VILLAGE OF CARY
655 VILLAGE HALL DRIVE
CARY, ILLINOIS 60013-2599
ENERGY SUPPLY CONTACT: MIKE LENOX
PHONE: (815) 490-2869
COMPANY: COM. ED.



DESIGNED - MWP/DSH	REVISED - 01-04-10 PER IDOT
DRAWN - MAC	REVISED - 03-01-10 PER IDOT
CHECKED - RWL	REVISED -
DATE - 03-01-10	FILE -060197-P2-ts-cable.sht

**VILLAGE OF CARY, ILLINOIS
THREE OAKS ROAD AND SILVER LAKE ROAD
ARRA INTERSECTION IMPROVEMENTS**

**SCHEDULE OF QUANTITIES, CABLE PLAN AND
PHASE DESIGNATION DIAGRAM
THREE OAKS ROAD AND SILVER LAKE ROAD**

SCALE: NONE STA. TO STA.

F.A.U. RTE.	SECTION	COUNTY	TOTAL SHEETS	SHEET NO.
•	09-00058-00-CH	MCHENRY	53	35
C-91-511-10			CONTRACT NO. 63381	
FED. ROAD DIST. NO. 1 ILLINOIS FED. AID PROJECT: ARA-90036351				

COPYRIGHT © 2010 BY BAXTER & WOODMAN, INC.
 ALL RIGHTS RESERVED. PROJECT NO. 09-00058-00-CH
 DATE: 3/23/2010 4:49:23 PM
 I:\C:\system\lsh\cable\060197-P2-ts-cable.sht