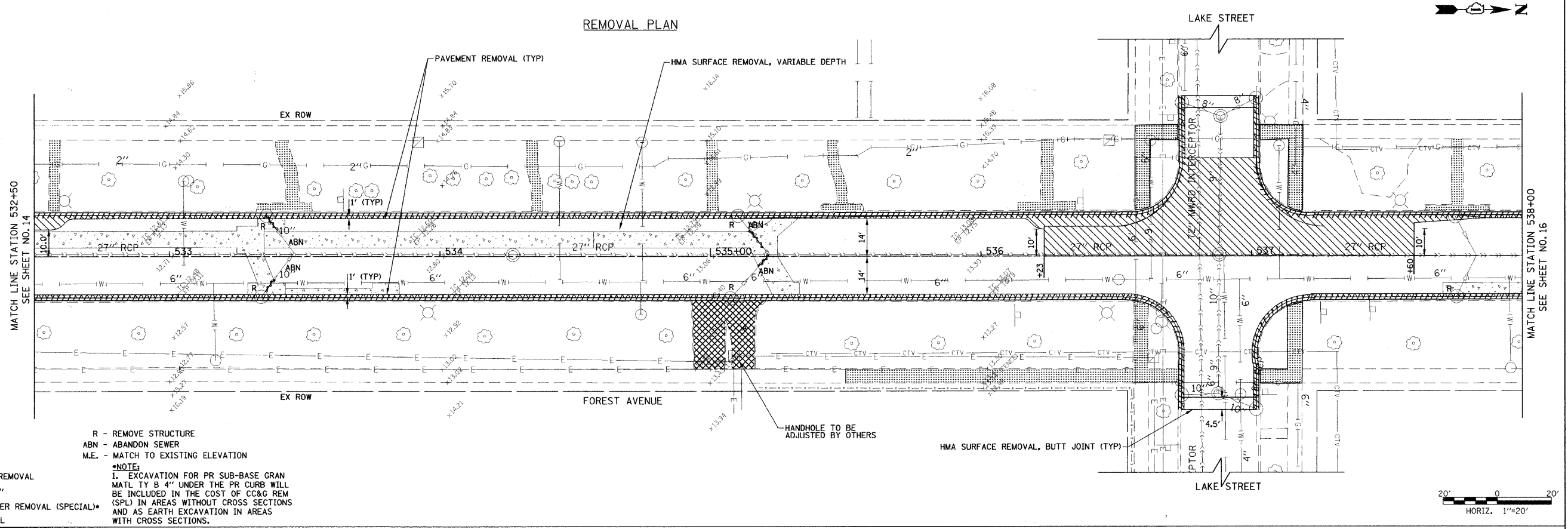


REMOVAL PLAN



REMOVAL LEGEND

- PAVEMENT REMOVAL
- SIDEWALK REMOVAL
- DRIVEWAY PAVEMENT REMOVAL
- CLASS D PATCHING, 9"
- COMB CURB AND GUTTER REMOVAL (SPECIAL)
- STORM SEWER REMOVAL

- R - REMOVE STRUCTURE
- ABN - ABANDON SEWER
- M.E. - MATCH TO EXISTING ELEVATION

NOTE:
 1. EXCAVATION FOR PR SUB-BASE GRAN MATL TY B 4" UNDER THE PR CURB WILL BE INCLUDED IN THE COST OF CC&G REM (SPL) IN AREAS WITHOUT CROSS SECTIONS AND AS EARTH EXCAVATION IN AREAS WITH CROSS SECTIONS.

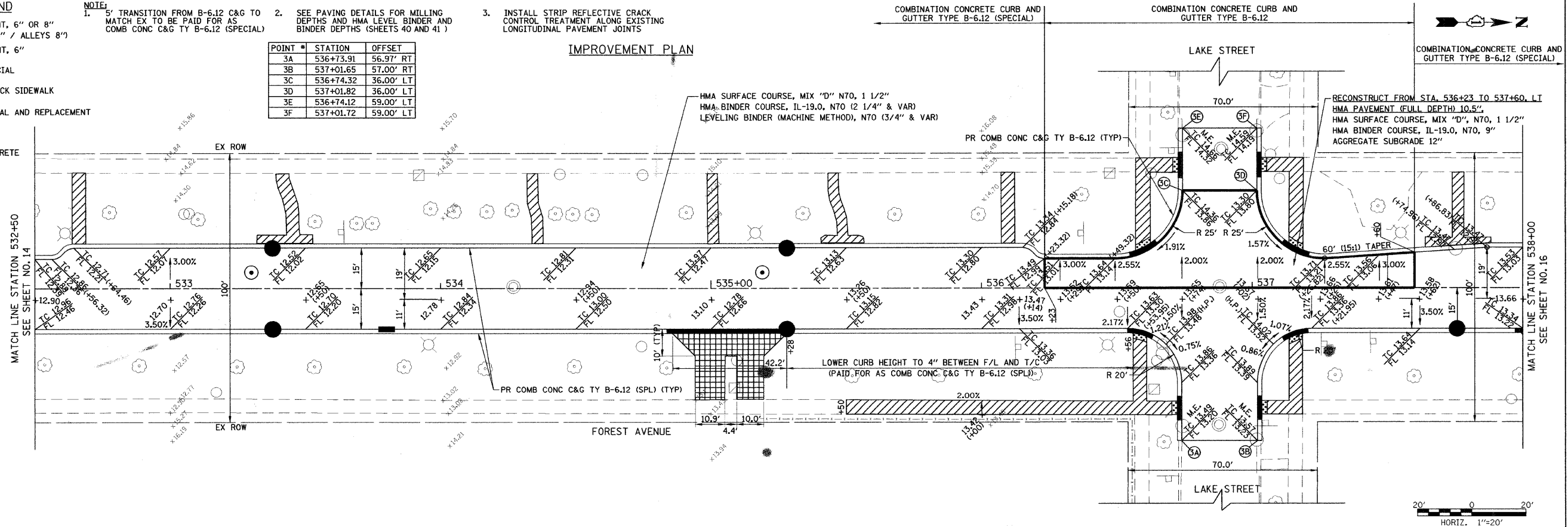
IMPROVEMENT LEGEND

- PCC DRIVEWAY PAVEMENT, 6" OR 8" (RESIDENTIAL APRONS 6" / ALLEYS 8")
- HMA DRIVEWAY PAVEMENT, 6"
- PCC SIDEWALK 5", SPECIAL
- REMOVE AND RELAY BRICK SIDEWALK
- BRICK DRIVEWAY REMOVAL AND REPLACEMENT
- DETECTABLE WARNINGS
- DEPRESSED COMB. CONCRETE CURB AND GUTTER

- NOTE:
1. 5' TRANSITION FROM B-6.12 C&G TO MATCH EX TO BE PAID FOR AS COMB CONC C&G TY B-6.12 (SPECIAL)
 2. SEE PAVING DETAILS FOR MILLING DEPTHS AND HMA LEVEL BINDER AND BINDER DEPTHS (SHEETS 40 AND 41)
 3. INSTALL STRIP REFLECTIVE CRACK CONTROL TREATMENT ALONG EXISTING LONGITUDINAL PAVEMENT JOINTS

POINT #	STATION	OFFSET
3A	536+73.91	56.97' RT
3B	537+01.65	57.00' RT
3C	536+74.32	36.00' LT
3D	537+01.82	36.00' LT
3E	536+74.12	59.00' LT
3F	537+01.72	59.00' LT

IMPROVEMENT PLAN



1051 PERIMETER DRIVE, SUITE 1025
 SCHAUMBURG, IL 60173

FILE NAME =	USER NAME = #USER#	DESIGNED - CEC	REVISED -
#FILEL#		DRAWN - NFT	REVISED -
		CHECKED - DWB	REVISED -
		DATE - 04/09/2010	REVISED -

STATE OF ILLINOIS
 DEPARTMENT OF TRANSPORTATION

SHERIDAN ROAD / FOREST AVENUE
 REMOVAL AND IMPROVEMENT PLAN

SCALE: SHEET NO. 3 OF 10 SHEETS STA. TO STA.

F.A.U. RTE.	SECTION	COUNTY	TOTAL SHEETS	SHEET NO.
2865	08-00250-02-PV	COOK	79	15
CONTRACT NO. 63417				
FED. ROAD DIST. NO. ILLINOIS FED. AID PROJECT				