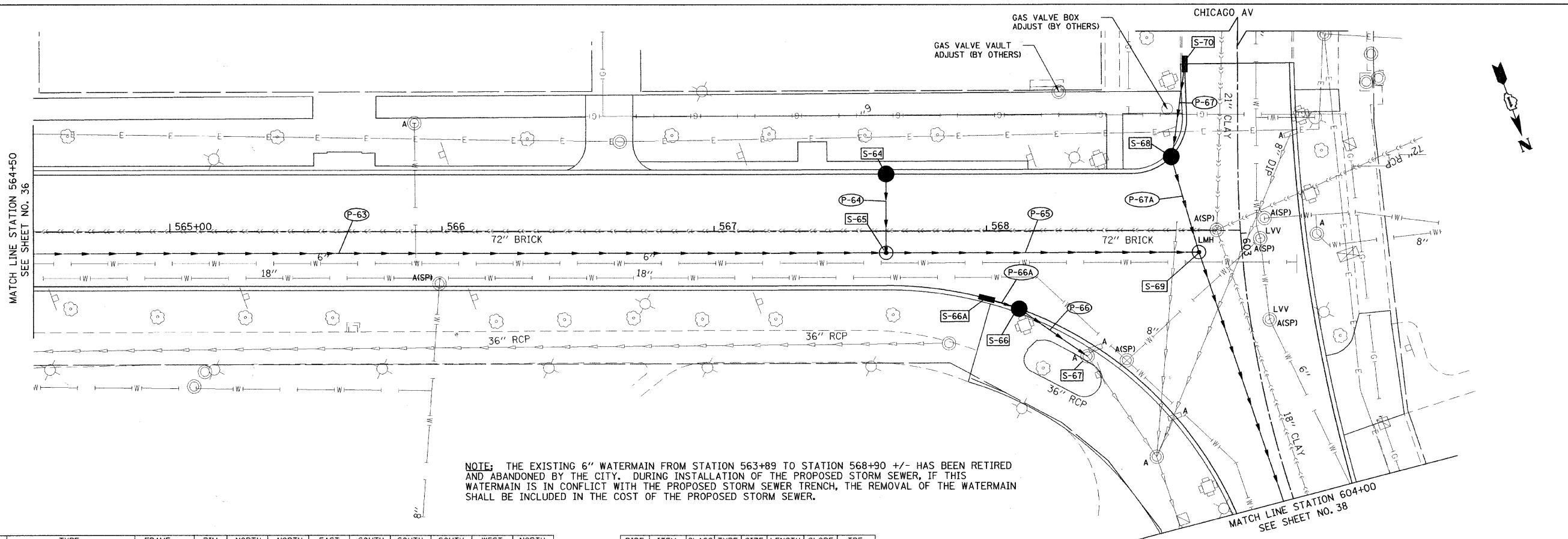


DATE: _____ BY: _____
 SURVEYED _____ PLOTTED _____
 CHECKED _____ RT. OF WAY CHECKED _____
 NOTE BOOK _____ PAID FILE NAME _____
 NO. _____

DATE: _____ BY: _____
 PROFILE SURVEYED _____ PLOTTED _____
 CHECKED _____ RT. OF WAY CHECKED _____
 NOTE BOOK _____ PAID FILE NAME _____
 NO. _____

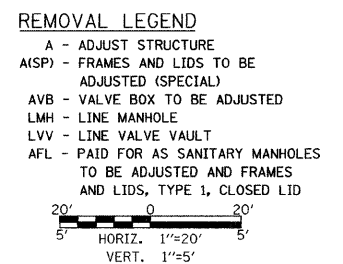
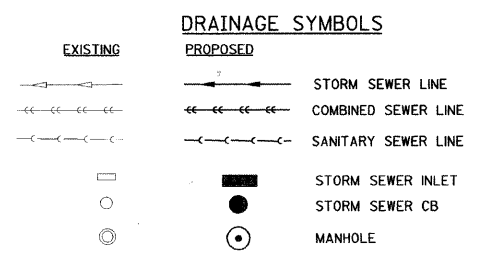


NOTE: THE EXISTING 6" WATERMAIN FROM STATION 563+89 TO STATION 568+90 +/- HAS BEEN RETIRED AND ABANDONED BY THE CITY. DURING INSTALLATION OF THE PROPOSED STORM SEWER, IF THIS WATERMAIN IS IN CONFLICT WITH THE PROPOSED STORM SEWER TRENCH, THE REMOVAL OF THE WATERMAIN SHALL BE INCLUDED IN THE COST OF THE PROPOSED STORM SEWER.

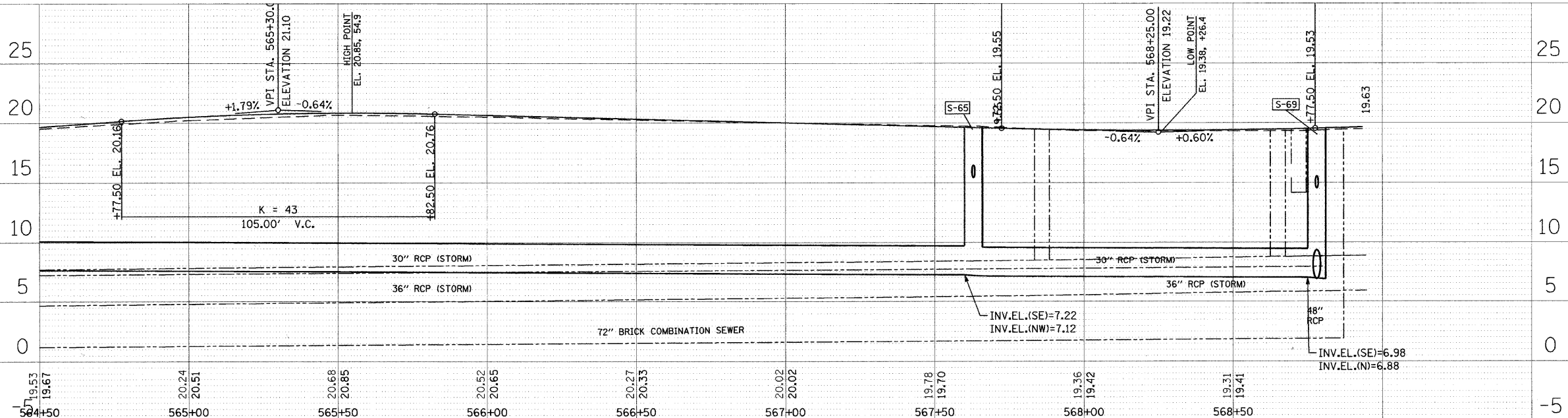
STR. NO.	STATION	OFFSET	TYPE	FRAME & GRATE	RIM EL.	NORTH	NORTH EAST	EAST	SOUTH EAST	SOUTH	SOUTH WEST	WEST	NORTH WEST
S-64	567+63	21.0' LT	PR CB TY A *	T3F&G	19.19		15.69						
S-65	567+63	8.0' RT	PR MH TY A - 6' DIA	T1F&G CL	19.45			7.22			15.45		7.12
S-66	568+12	28.7' RT	PR CB TY A *	T3F&G	18.84			16.02					15.92
S-66A	568+00	24.9' RT	PR INL TY A	T3F&G	18.93								16.12
S-67	568+37	46.3' RT	EX MH	T1F&G CL	19.11			15.73			15.61(EX)		15.54(EX)
S-68	568+68	27.0' LT	PR CB TY A *	T3F&G	18.35	14.86					14.96		
S-69	568+78	8.0' RT	PR MH TY A - 6' DIA	T1F&G CL	19.75	6.88		6.98	14.54				
S-70	602+38	19.4' RT	PR INL TY A	T3F&G	18.27		15.27						

PIPE NO.	ITEM	CLASS	TYPE	SIZE	LENGTH (FT)	SLOPE	TBF (CU YD)
P-63	SS RG	A	2	30"	336.2	0.13%	651
P-64	DIP	-	-	12"	24	1.00%	7
P-65	SS RG	A	2	30"	108.9	0.13%	230
P-66	DIP	-	-	12"	26.1	0.75%	5
P-66A	DIP	-	-	12"	9.6	1.00%	2
P-67	DIP	-	-	12"	31.5	1.00%	7
P-67A	DIP	-	-	12"	31.4	1.00%	12

SS RG - STORM SEWER RUBBER GASKET
 DIP - DUCTILE IRON PIPE CLASS 50



ALL T3F&G SHALL BE EAST JORDAN TYPE 7045 M1 SINUSOIDAL GRATES OR APPROVED EQUIVALENT
 * INDICATES THAT STRUCTURE MUST INCLUDE A HALF-TRAP CONNECTION FROM LATERAL TO MAINLINE (SEE SEWER DETAILS)



TransSystems
 1051 PERIMETER DRIVE, SUITE 1025
 SCHAUMBURG, IL 60173

FILE NAME: #115#	USER NAME: #USER#	DESIGNED: CMU	REVISED: -	STATE OF ILLINOIS DEPARTMENT OF TRANSPORTATION	SHERIDAN ROAD / FOREST AVENUE DRAINAGE AND UTILITIES PLAN	F.A.U. RTE.: 2865	SECTION: 08-00250-02-PV	COUNTY: COOK	TOTAL SHEETS: 79	SHEET NO.: 37		
PLOT SCALE: #SCALE#	CHECKED: DWB	REVISED: -	SCALE:			SHEET NO. 9 OF 10 SHEETS	STA. TO STA.	CONTRACT NO. 63417				
PLOT DATE: #DATE#	DATE: 04/09/2010	REVISED: -	ILLINOIS FED. AID PROJECT									