

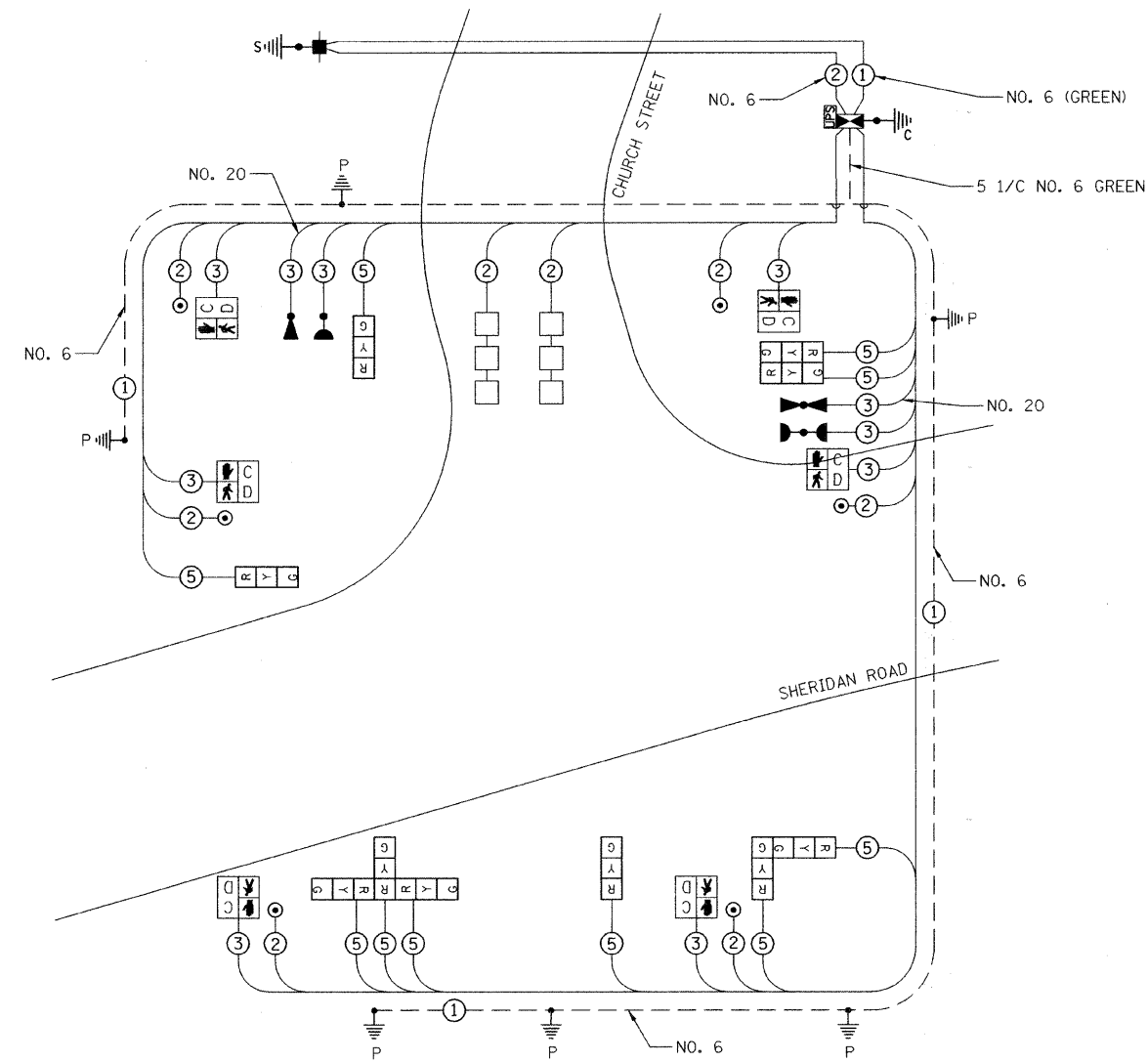
SCHEDULE OF QUANTITIES

ITEM	UNIT	QUANTITY
91	FOOT	CONDUIT IN TRENCH, 2" DIA., GALVANIZED STEEL
162	FOOT	CONDUIT IN TRENCH, 2 1/2" DIA., GALVANIZED STEEL
65	FOOT	CONDUIT IN TRENCH, 4" DIA., GALVANIZED STEEL
102	FOOT	CONDUIT PUSHED, 2" DIA., GALVANIZED STEEL
59	FOOT	CONDUIT PUSHED, 4" DIA., GALVANIZED STEEL
3	EACH	HANDHOLE
1	EACH	DOUBLE HANDHOLE
301	FOOT	TRENCH AND BACKFILL FOR ELECTRICAL WORK
1	EACH	FULL-ACTUATED CONTROLLER AND TYPE IV CABINET, SPECIAL
584	FOOT	ELECTRIC CABLE IN CONDUIT, SIGNAL NO. 14 2C
807	FOOT	ELECTRIC CABLE IN CONDUIT, SIGNAL NO. 14 3C
1,140	FOOT	ELECTRIC CABLE IN CONDUIT, SIGNAL NO. 14 5C
118	FOOT	ELECTRIC CABLE IN CONDUIT, LEAD-IN, NO. 14 1 PAIR
219	FOOT	ELECTRIC CABLE IN CONDUIT, SERVICE, NO. 6 2 C
1	EACH	TRAFFIC SIGNAL POST, 10 FT.
4	EACH	TRAFFIC SIGNAL POST, GALVANIZED STEEL 14 FT.
2	EACH	TRAFFIC SIGNAL POST, GALVANIZED STEEL 18 FT.
28	FOOT	CONCRETE FOUNDATION, TYPE A
4	FOOT	CONCRETE FOUNDATION, TYPE C
3	EACH	SIGNAL HEAD, LED, 1-FACE, 3-SECTION, BRACKET MOUNTED
2	EACH	SIGNAL HEAD, LED, 2-FACE, 3-SECTION, BRACKET MOUNTED
1	EACH	SIGNAL HEAD, LED, 3-FACE, 3-SECTION, BRACKET MOUNTED
6	EACH	PEDESTRIAN SIGNAL HEAD, LED, 1-FACE, BRACKET MOUNTED WITH COUNTDOWN TIMER
2	EACH	INDUCTIVE LOOP DETECTOR
156	FOOT	DETECTOR LOOP, TYPE I
2	EACH	LIGHT DETECTOR
1	EACH	LIGHT DETECTOR AMPLIFIER
6	EACH	PEDESTRIAN PUSH-BUTTON
1	EACH	SERVICE INSTALLATION - POLE MOUNTED
1	EACH	UNINTERRUPTIBLE POWER SUPPLY
568	FOOT	ELECTRIC CABLE IN CONDUIT, GROUNDING, NO. 6 1C
181	FOOT	ELECTRIC CABLE IN CONDUIT NO. 20 3/C, TWISTED, SHIELDED

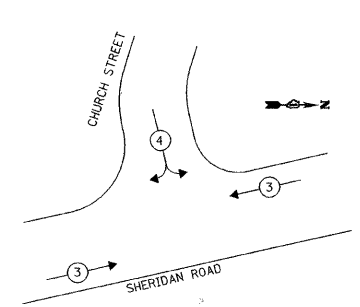
RESTORATION OF WORK AREA. RESTORATION OF THE TRAFFIC SIGNAL WORK AREA SHALL BE INCIDENTAL TO THE RELATED PAY ITEM SUCH AS FOUNDATION, CONDUIT, HANDHOLE, TRENCH AND BACKFILL, ETC., AND NO EXTRA COMPENSATION SHALL BE ALLOWED. ALL ROADWAY SURFACES SUCH AS SHOULDERS, MEDIANS, SIDEWALKS, PAVEMENT, ETC. SHALL BE REPLACED IN KIND. ALL DAMAGE TO MOWED LAWNS SHALL BE REPLACED WITH AN APPROVED SOD.

NOTE: THE TRAFFIC SIGNAL CONTROLLER EQUIPMENT FOR THIS PROJECT SHALL BE "EAGLE".

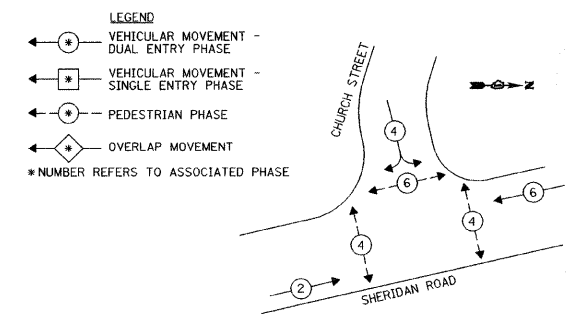
CABLE PLAN
NOT TO SCALE



EMERGENCY VEHICLE PREEMPTION SEQUENCE



PROPOSED CONTROLLER SEQUENCE



PHASE DESIGNATION DIAGRAM

PROPOSED EMERGENCY VEHICLE PREEMPTORS	
EMERGENCY VEHICLE PREEMPTOR	4 3
MOVEMENT	↘ ↙

I.D.O.T. TRAFFIC SIGNAL INSTALLATION ELECTRICAL SERVICE REQUIREMENTS					TOTAL WATTAGE	
TYPE	NO. LAMPS	WATTAGE		% OPERATION		
SIGNAL (RED)	10	---	17	0.50	85	
	(YELLOW)	10	---	25		62.5
	(GREEN)	10	---	15		37.5
ARROW	---	---	---	---	---	
PED SIGNAL	6	---	25	1.00	100	
CONTROLLER	1	---	100	1.00	100	
VIDEO SYSTEM	---	---	---	---	---	
TOTAL =					385	

ENERGY COSTS TO: CITY OF EVANSTON
2100 RIDGE AVENUE
EVANSTON, IL 60201

ENERGY SUPPLY: CONTACT: LARRY SHANK
PHONE: (847) 816-5465
COMPANY: COMED

FILE NAME =	USER NAME = #USER#	DESIGNED - CMJ	REVISED -
#FILE#		DRAWN - CMJ	REVISED -
	PLOT SCALE = #SCALE#	CHECKED - KMM	REVISED -
	PLOT DATE = #DATE#	DATE - 04/09/2010	REVISED -

STATE OF ILLINOIS
DEPARTMENT OF TRANSPORTATION

SHERIDAN ROAD AT CHURCH STREET
CABLE PLAN, SEQUENCE OF OPERATIONS
AND SCHEDULE OF QUANTITIES

F.A.U. RTE.	SECTION	COUNTY	TOTAL SHEETS	SHEET NO.
2865	08-00250-02-PV	COOK	79	45
CONTRACT NO. 63417				
FED. ROAD DIST. NO. ILLINOIS FED. AID PROJECT				



1051 PERIMETER DRIVE, SUITE 1025
SCHAUMBURG, IL 60173