

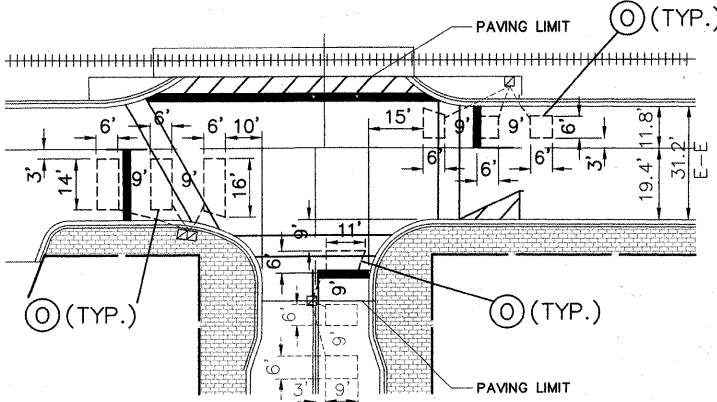
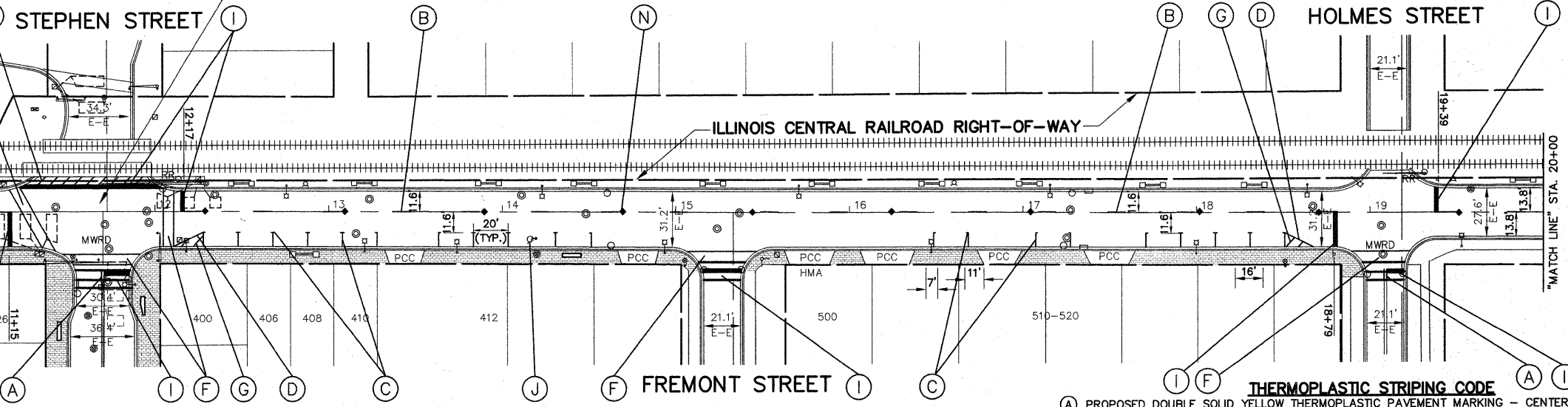
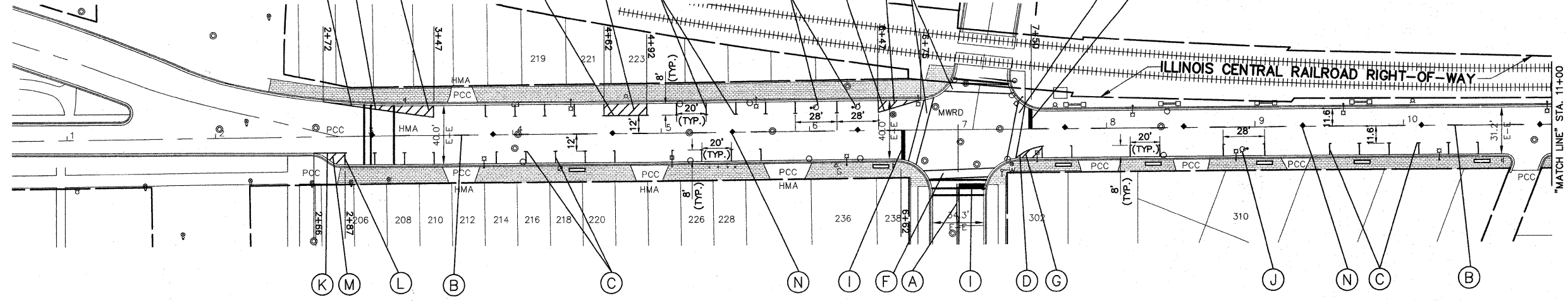
STATE STREET
(OVERPASS)

LEMONT STREET

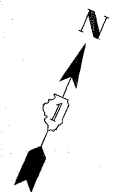
MAIN STREET

FREMONT STREET

MAIN STREET



DETECTOR LOOP INSTALLATION
AT STEPHEN STREET



FOR CONTINUATION
SEE BELOW LEFT

FOR CONTINUATION
SEE ABOVE RIGHT

SEE DETAIL BELOW FOR TRAFFIC CONTROL
LOOP REPLACEMENT AT STEPHEN STREET

FOR CONTINUATION
SEE SHEET 5

NOTE:
ALL "ARROWS" AND "ONLYS" SHALL BE 8" IN HEIGHT.

NOTE:
PROPOSED DOUBLE SOLID YELLOW THERMOPLASTIC
PAVEMENT MARKING - CENTER LINE 4", 11" O/C (NOTE: A)
IS MEASURED PER LINE. TOTAL QUANTITY AND
PAYMENT LENGTH IS FOR EACH LINEAR FOOT OF
SINGLE 4" STRIPE INSTALLED.

NOTE:
SHORT-TERM PAVEMENT MARKING IS PROPOSED ON THE MILLED PAVEMENT, NEW
BINDER AND ON THE NEW SURFACE. SEE ARTICLE 703.04 OF THE LATEST EDITION
OF THE "STANDARD SPECIFICATIONS FOR ROAD AND BRIDGE CONSTRUCTION".

- THERMOPLASTIC STRIPING CODE**
- (A) PROPOSED DOUBLE SOLID YELLOW THERMOPLASTIC PAVEMENT MARKING - CENTER LINE 4", 11" O/C
 - (B) PROPOSED SKIP-DASH YELLOW THERMOPLASTIC PAVEMENT MARKING - LINE 4" - 10' DASH, 30' SKIP (LANE LINE)
 - (C) PROPOSED SOLID WHITE THERMOPLASTIC PAVEMENT MARKING - LINE 4" - (PARKING STALL LINE)
 - (D) PROPOSED SOLID WHITE THERMOPLASTIC PAVEMENT MARKING - LINE 4" - (EDGE LINE)
 - (E) PROPOSED SOLID YELLOW THERMOPLASTIC PAVEMENT MARKING - LINE 4" (LANE LINE)
 - (F) PROPOSED SOLID WHITE THERMOPLASTIC PAVEMENT MARKING - LINE 6" (CROSSWALK LINE)
 - (G) PROPOSED SOLID WHITE THERMOPLASTIC PAVEMENT MARKING - LINE 12", 45° DIAGONALS, (NO PARKING LINE)
 - (H) PROPOSED SOLID YELLOW THERMOPLASTIC PAVEMENT MARKING - LINE 12", 45° DIAGONALS, (MEDIAN & CAUTION LINE)
 - (I) PROPOSED SOLID WHITE THERMOPLASTIC PAVEMENT MARKING - LINE 24" (STOP BAR & CAUTION LINE)
 - (J) PROPOSED SOLID WHITE THERMOPLASTIC PAVEMENT MARKING - LETTERS & SYMBOLS
- PAINTED STRIPING CODE**
- (K) PROPOSED SOLID WHITE PAINTED PAVEMENT MARKING - LINE 4" - (EDGE LINE)
 - (L) PROPOSED SOLID WHITE PAINTED PAVEMENT MARKING - LINE 4" - (PARKING STALL LINE)
 - (M) PROPOSED SOLID YELLOW PAINTED PAVEMENT MARKING - LINE 12", 45° DIAGONALS, (NO PARKING LINE)
- REFLECTIVE PAVEMENT MARKERS**
- (N) PROPOSED RAISED REFLECTIVE PAVEMENT MARKERS - 80' O/C OR AS SHOWN
 - ◆ TWO-WAY AMBER MARKER
 - ▶ ONE-WAY AMBER MARKER
- DETECTOR LOOPS**
- (O) PROPOSED DETECTOR LOOP REPLACEMENT

IMPORTANT!
FULL SIZE PLANS HAVE BEEN
PREPARED USING STANDARD
ENGINEERING SCALES. REDUCED
SIZED PLANS WILL NOT CONFORM
TO STANDARD SCALES INDICATED
IN TITLE BLOCK.

Frank Novotny & Associates, Inc.
Civil Engineer
Municipal Consultant
825 Midway Drive • Wheelock, IL • 61897 • Telephone: (630) 887-8640 • Fax: (630) 887-0133
ILLINOIS PROFESSIONAL DESIGN FIRM NO. 184-000028

FILE NAME =	USER NAME =	DESIGNED - THK	REVISED - THK 3-12-10
		DRAWN - JFP-JEP	REVISED - THK 4-05-10
PLOT SCALE = 1" = 40'		CHECKED - THK	REVISED -
PLOT DATE =		DATE - 1-26-10	REVISED -

STATE OF ILLINOIS
DEPARTMENT OF TRANSPORTATION

PLAN: MAIN STREET-
STA. 3+00 (STATE STREET) TO STA. 20+00
SCALE: SHEET NO. OF SHEETS STA. TO STA.
(PAVEMENT MARKING)

F.A. RTE.	SECTION	COUNTY	TOTAL SHEETS	SHEET NO.
3587	08-00044-00-RS	COOK	18	6
CONTRACT NO. 63452				
FED. ROAD DIST. NO.	ILLINOIS FED. AID PROJECT	M-9003(211)		