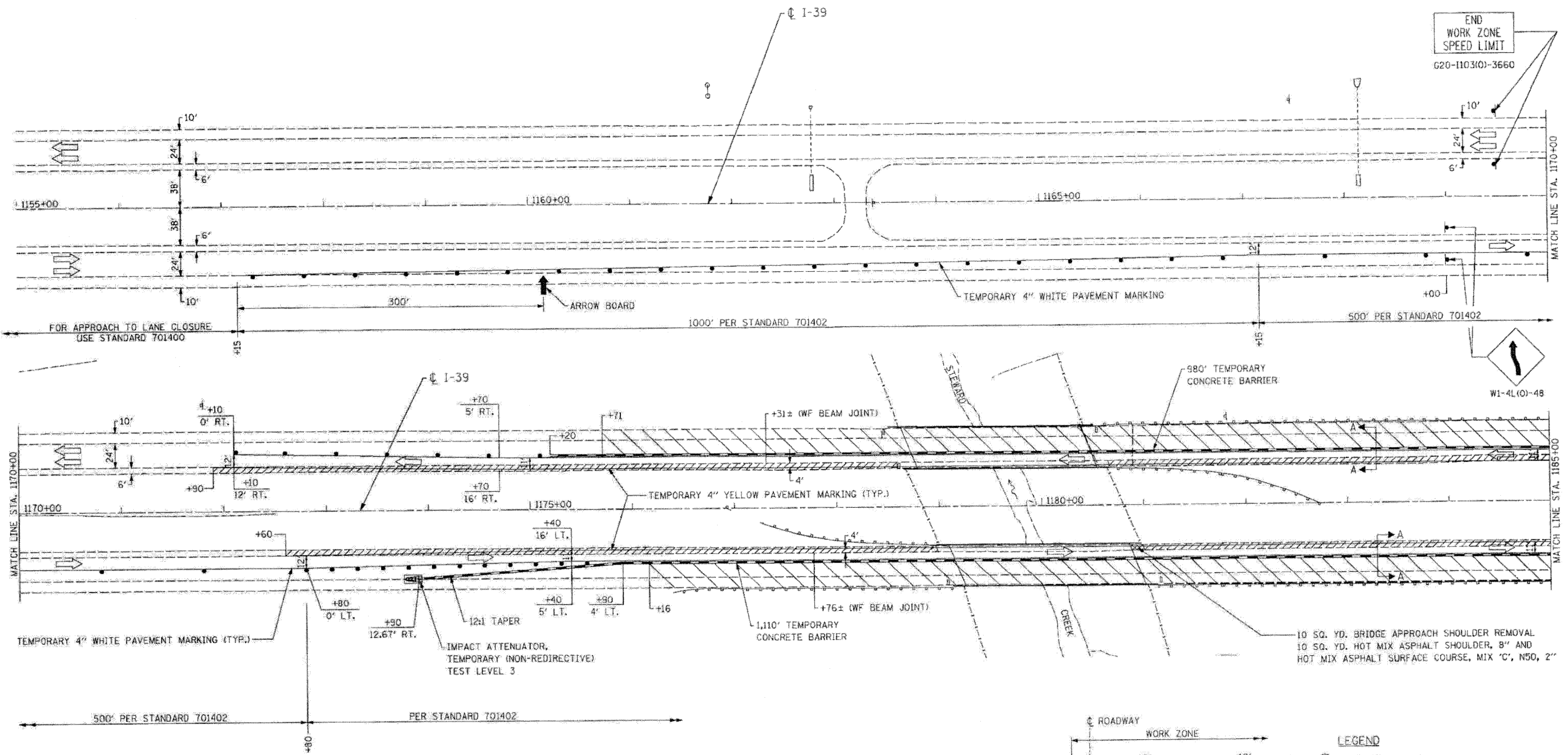




END WORK ZONE SPEED LIMIT
G20-1103(O)-3660



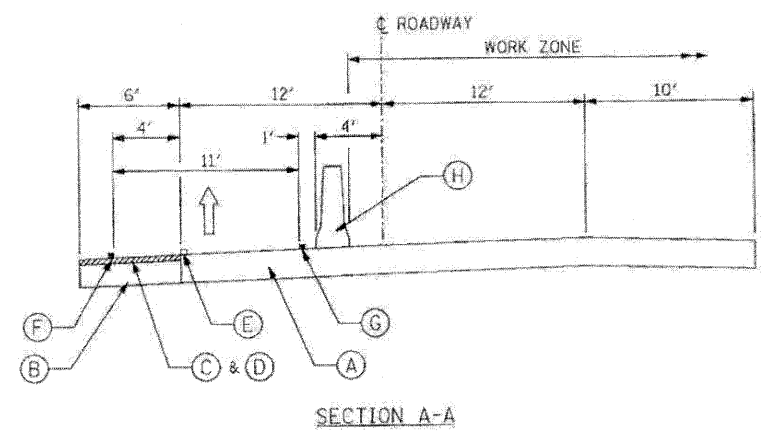
LEGEND

- PROPOSED HMA SURFACE REMOVAL, 2" HMA SURFACE COURSE, MIX 'C', N50, 2"
- BRIDGE APPROACH SHOULDER REMOVAL
- TEMPORARY CONCRETE BARRIER
- TEMPORARY ATTENUATOR
- TRAFFIC FLOW ARROW
- WORK ZONE

NOTES:

1) PRESTAGE MEDIAN SHOULDER REPAIR WORK SHALL CONSIST OF HMA SURFACE REMOVAL 2", BRIDGE APPROACH SHOULDER REMOVAL AND HMA SHOULDER REMOVAL AT LOCATIONS AS DIRECTED BY ENGINEER, PLACEMENT OF HMA SHOULDER 8" AND PLACEMENT OF SURFACE COURSE MIX 'C', N50, 2".

2) PRESTAGE WORK SHALL BE DONE UTILIZING DAILY LANE CLOSURE STANDARD 701406, "LANE CLOSURE, FREEWAY/EXPRESSWAY, DAY OPERATIONS ONLY," UNLESS OTHERWISE DIRECTED BY THE ENGINEER.



LEGEND

- (A) EXISTING 10" C.R.C.P.
- (B) EXISTING 10" STABILIZED SHOULDER
- (C) PROPOSED HMA SURFACE REMOVAL, 2"
- (D) HMA SURFACE COURSE, MIX 'C', N50, 2"
- (E) EXISTING PAVEMENT MARKING TO BE REMOVED
- (F) TEMPORARY 4" YELLOW LINE
- (G) TEMPORARY 4" WHITE LINE
- (H) TEMPORARY CONCRETE BARRIER

MOT 04

DATE	
BY	
DESIGNED	
DRAWN	
CHECKED	
DATE	
BY	
DESIGNED	
DRAWN	
CHECKED	
DATE	
BY	
DESIGNED	
DRAWN	
CHECKED	
DATE	
BY	
DESIGNED	
DRAWN	
CHECKED	
DATE	
BY	
DESIGNED	
DRAWN	
CHECKED	
DATE	
BY	
DESIGNED	
DRAWN	
CHECKED	
DATE	
BY	
DESIGNED	
DRAWN	
CHECKED	
DATE	
BY	

DATE	
BY	
DESIGNED	
DRAWN	
CHECKED	
DATE	
BY	
DESIGNED	
DRAWN	
CHECKED	
DATE	
BY	
DESIGNED	
DRAWN	
CHECKED	
DATE	
BY	
DESIGNED	
DRAWN	
CHECKED	
DATE	
BY	
DESIGNED	
DRAWN	
CHECKED	
DATE	
BY	
DESIGNED	
DRAWN	
CHECKED	
DATE	
BY	
DESIGNED	
DRAWN	
CHECKED	
DATE	
BY	

FILE NAME = D264E97-sh1-staging04.dgn
PLOT DATE = 3/29/2010
PLOT SCALE = 50.0000 1" = 100'

CHRISTIAN-ROGE & ASSOCIATES, INC.
ENGINEERS-PLANNERS-SURVEYORS
211 WEST WACKER DRIVE
CHICAGO, ILLINOIS 60606
PHONE: (312)372-2023 FAX: (312)372-5274

DESIGNED	- E.M.	REVISED	-
DRAWN	- B.K.	REVISED	-
CHECKED	- M.P.	REVISED	-
DATE	- MARCH 2010	REVISED	-

STATE OF ILLINOIS
DEPARTMENT OF TRANSPORTATION

TRAFFIC CONTROL AND PROTECTION			
I-39 - STA. 1155+00 TO STA. 1185+00			
STAGE I			
SCALE:	SHEET NO. OF SHEETS	STA. TO STA.	

F.A.I. RTE.	SECTION	COUNTY	TOTAL SHEETS	SHEET NO.
39	103-1, 103-2(RS)	LEE	313	83
FED. ROAD DIST. NO. 1 (ILLINOIS) FED. AID PROJECT				CONTRACT NO. 64E97