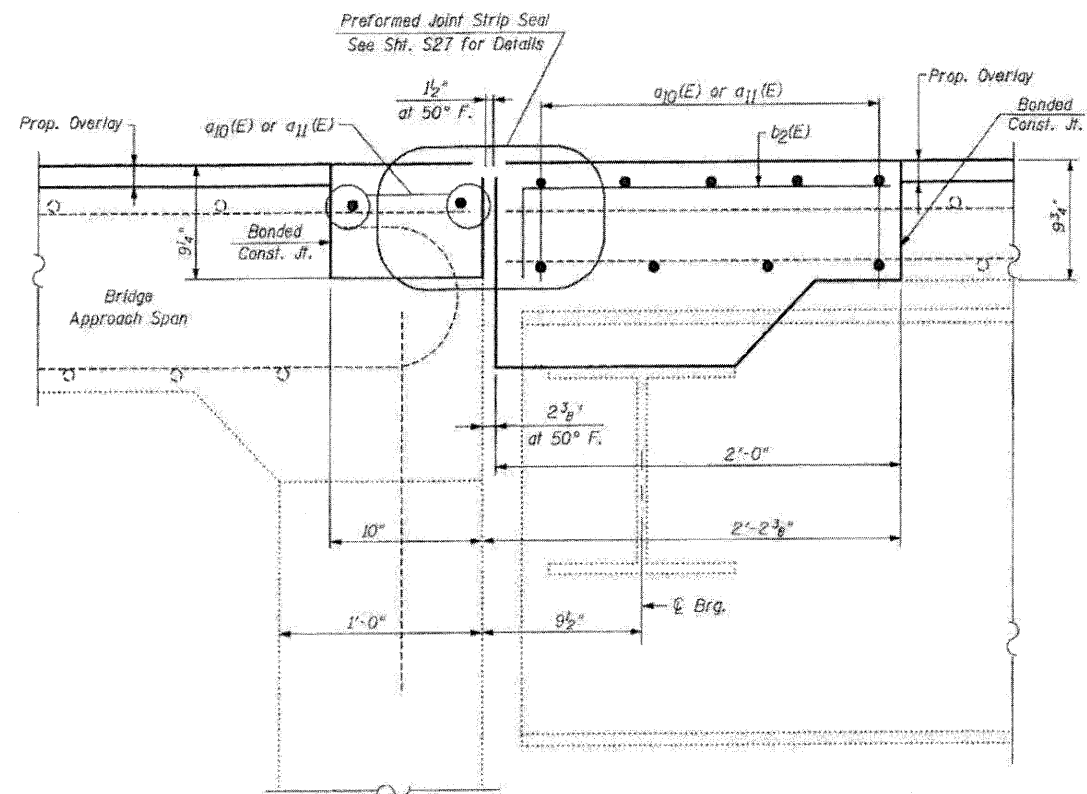
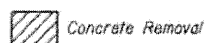


EXISTING

SECTION B-B

SOUTHBOUND STRUCTURE-SOUTH ABUTMENT

LEGEND:



PROPOSED

SECTION B-B

SOUTHBOUND STRUCTURE-SOUTH ABUTMENT

NOTE:
For Bar Splicer Assembly Details, See Sht. S26

FILE NAME: 0528052-64E97-06-5-0604-58-
PLOT DATE: 03/29/2010
PLOT SCALE: 5/8" = 1' IN.

CR CHRISTIAN-ROGE & ASSOCIATES, INC.
ENGINEERS-PLANNERS-SURVEYORS
211 WEST WACKER DRIVE
CHICAGO, ILLINOIS 60606
PHONE: (312)372-2023 FAX: (312)372-5274

DESIGNED - B.N.S./J.C.N.
DRAWN - D.L./F.M.
CHECKED - B.N.S./J.C.N.
DATE - MARCH, 2010

REVISED -
REVISED -
REVISED -
REVISED -

**STATE OF ILLINOIS
DEPARTMENT OF TRANSPORTATION**

**JOINT RECONSTRUCTION DETAILS AT SOUTH ABUTMENT
SOUTHBOUND STRUCTURE
I-39 OVER U.S. RTE. 30**

S.N. 052-0052

SCALE: SHEET NO. 56 OF 528 SHEETS STA. TO STA.

F.A.I. RTE.	SECTION	COUNTY	TOTAL SHEETS	SHEET NO.
39	103-1, 103-2RS	LEE	313	141
FED. ROAD DIST. NO. ILLINOIS FED. AID PROJECT			CONTRACT NO. 64E97	