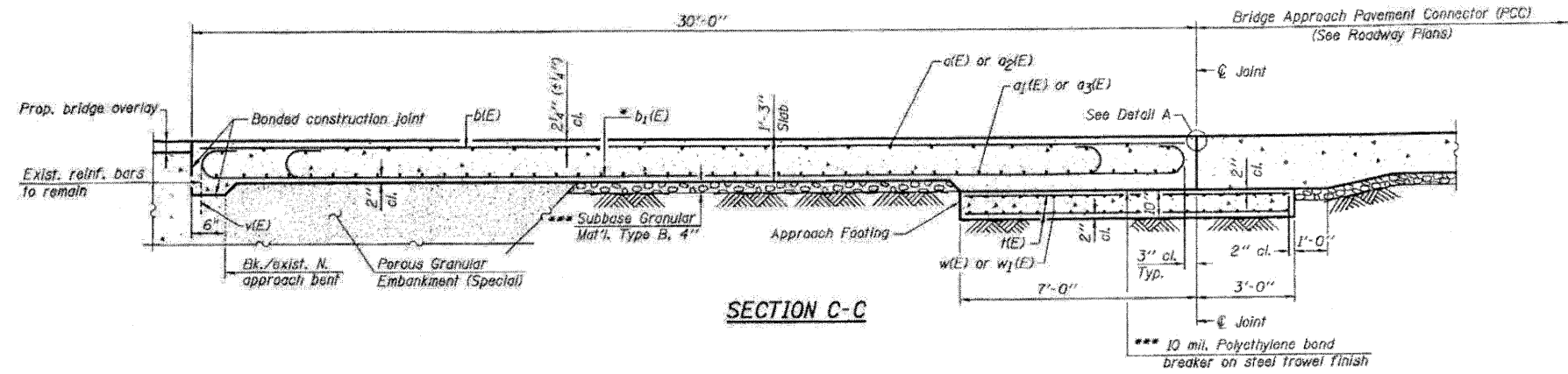
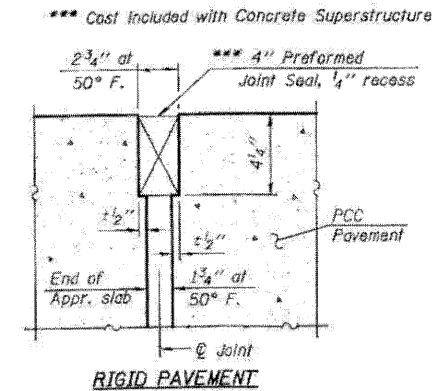


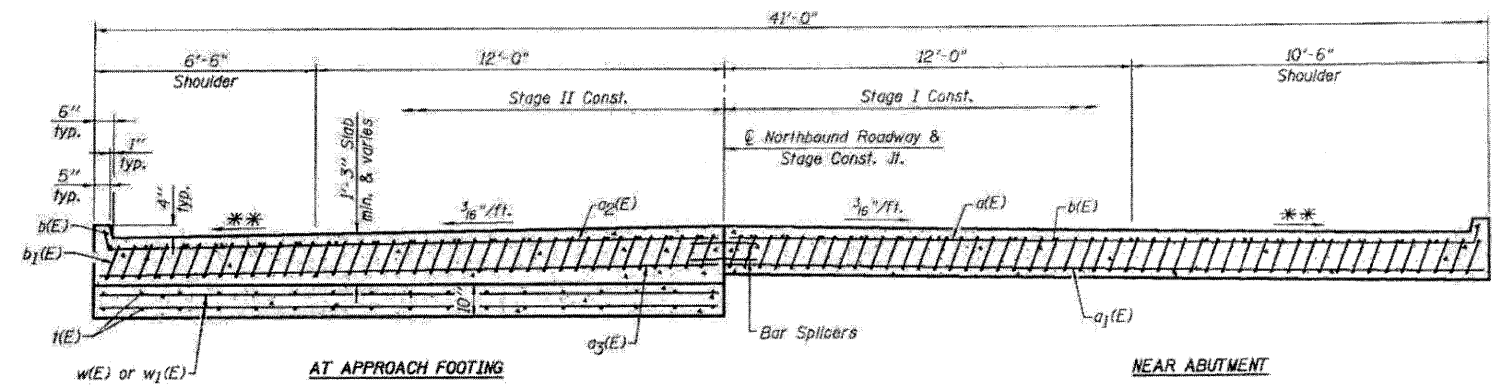
Notes:
 Approach slab and parapet concrete shall be paid for as Concrete Superstructure.
 Approach footing concrete shall be paid for as Concrete Structures.
 Reinforcement shall be paid for as Reinforcement Bars, Epoxy Coated.
 The approach footing maximum applied service bearing pressure (Qmax) = 2.0 ksf.
 For bar splicer details, see sheet S26.
 Cost of excavation for approach footing included with Concrete Structures.



SECTION C-C

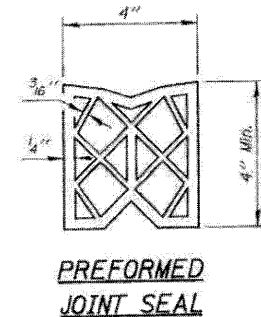


DETAIL A



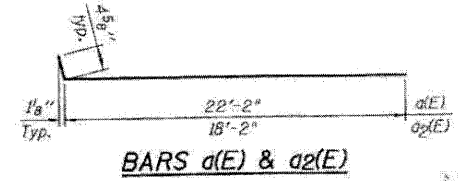
SECTION D-D
 (See Plan for dimensions not shown)

**
 Varies from 2% at bridge to 4%

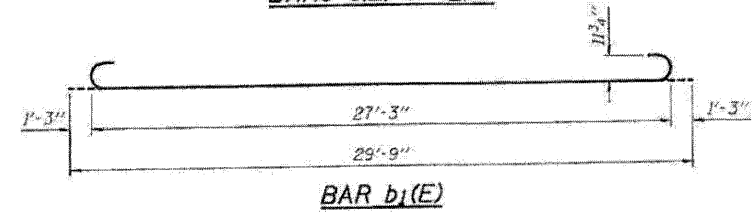


ONE APPROACH
 BILL OF MATERIAL

Bar	No.	Size	Length	Shape	
a(E)	25	#4	22'-7"	—	
a1(E)	46	#5	22'-2"	—	
a2(E)	25	#4	18'-7"	—	
a3(E)	46	#5	18'-2"	—	
b(E)	36	#5	29'-8"	—	
b1(E)	98	#9	29'-9"	—	
i(E)	82	#4	9'-8"	—	
w(E)	40	#5	22'-2"	—	
w1(E)	40	#5	18'-2"	—	
Approach Slab Removal				Sq. Yd.	267
Concrete Structures				Cu. Yd.	12.7
Concrete Superstructure				Cu. Yd.	61.0
Reinforcement Bars, Epoxy Coated				Pound	15,860
Bar Splicers				Each	111
Bridge Approach Shoulder Removal				Sq. Yd.	24



BARS a(E) & a2(E)



BAR b1(E)