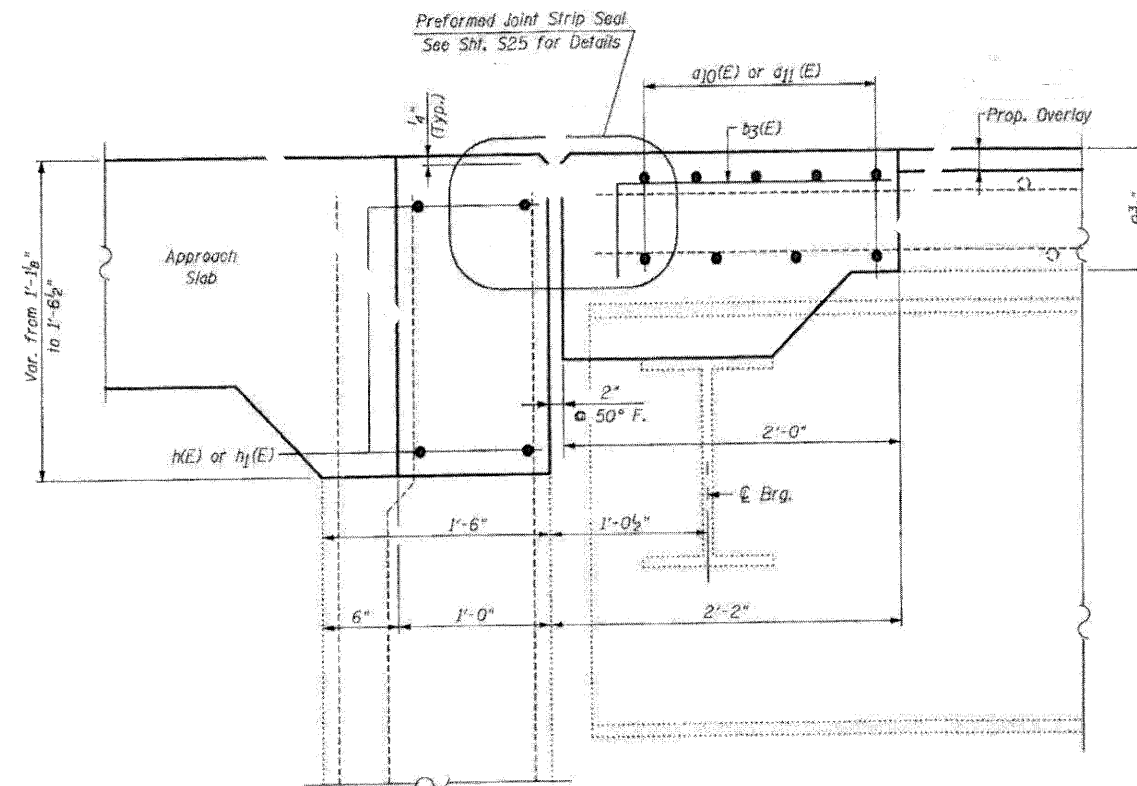


EXISTING

SECTION B-B

SOUTHBOUND STRUCTURE-SOUTH ABUTMENT

LEGEND:
 Concrete Removal



PROPOSED

SECTION B-B

SOUTHBOUND STRUCTURE-SOUTH ABUTMENT

NOTE:
 For Bar Splicer Assembly Details, See Shf. S24

FILE NAME: 0520040-64E97-26-S-Abut-SB
 PLOT DATE: 4/3/2010
 PLOT SCALE: 5/8" = 1' IN.

CHRISTIAN-ROGE & ASSOCIATES, INC.
 ENGINEERS-PLANNERS-SURVEYORS
 211 WEST WACKER DRIVE
 CHICAGO, ILLINOIS 60606
 PHONE: (312)372-2023 FAX: (312)372-5274

DESIGNED	B.N.S./J.C.N.	REVISED	-
DRAWN	D.L./F.M.	REVISED	-
CHECKED	B.N.S./J.C.N.	REVISED	-
DATE	MARCH, 2010	REVISED	-

STATE OF ILLINOIS
DEPARTMENT OF TRANSPORTATION

JOINT RECONSTRUCTION DETAILS AT SOUTH ABUTMENT
SOUTHBOUND STRUCTURE
I-39 OVER STEWARD CREEK S.N. 052-0048

SCALE: SHEET NO. 56 OF 526 SHEETS STA. TO STA.

F.A.I. RTE.	SECTION	COUNTY	TOTAL SHEETS	SHEET NO.
39	(103-1, 103-2)RS	LEE	313	169
FED. ROAD DIST. NO. ILLINOIS FED. AID PROJECT			CONTRACT NO. 64E97	